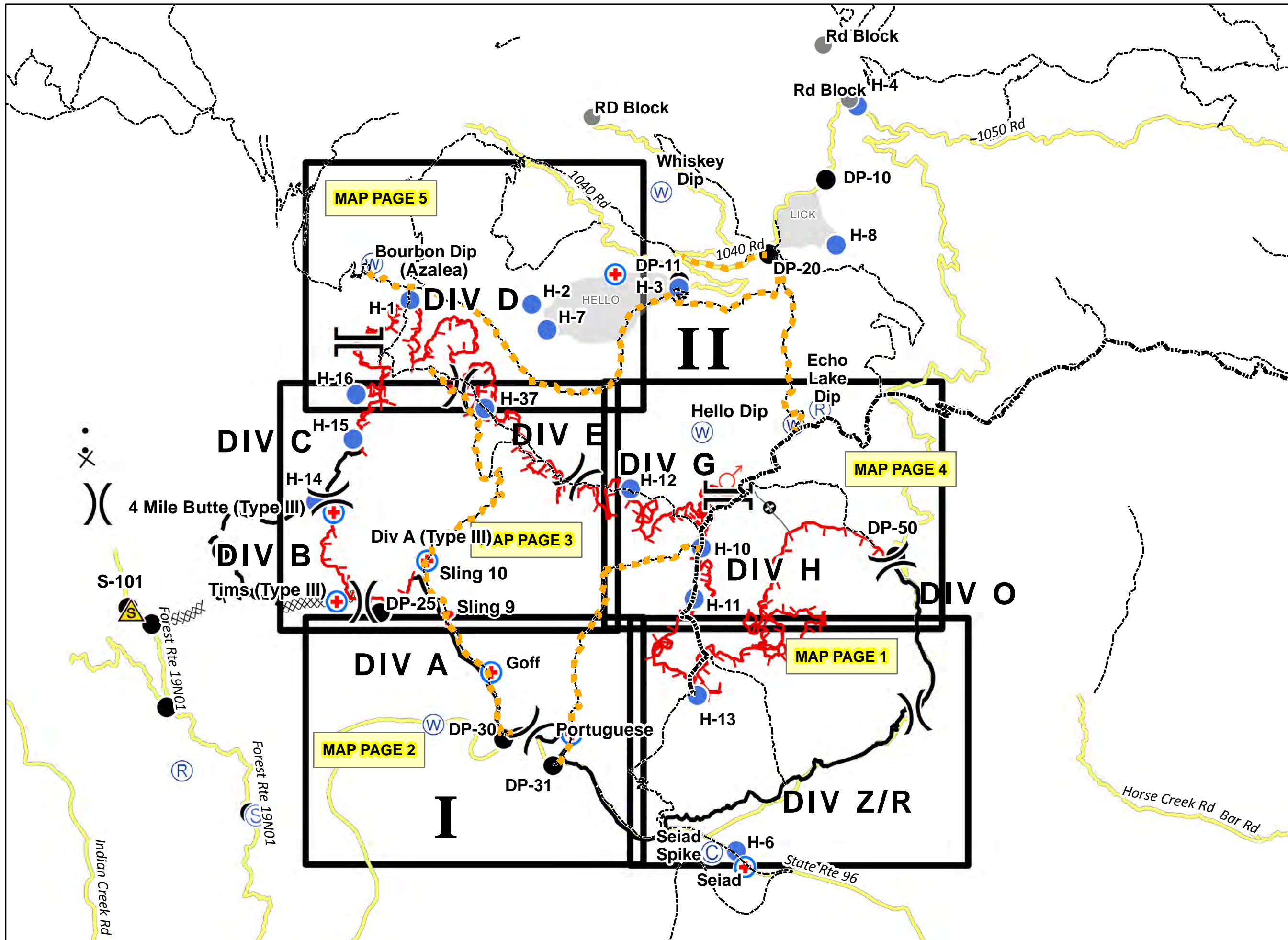


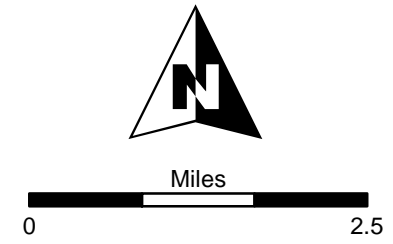
Fort Complex
CA-KNF-0005659
IAP
9/04/2012
DAY SHIFT



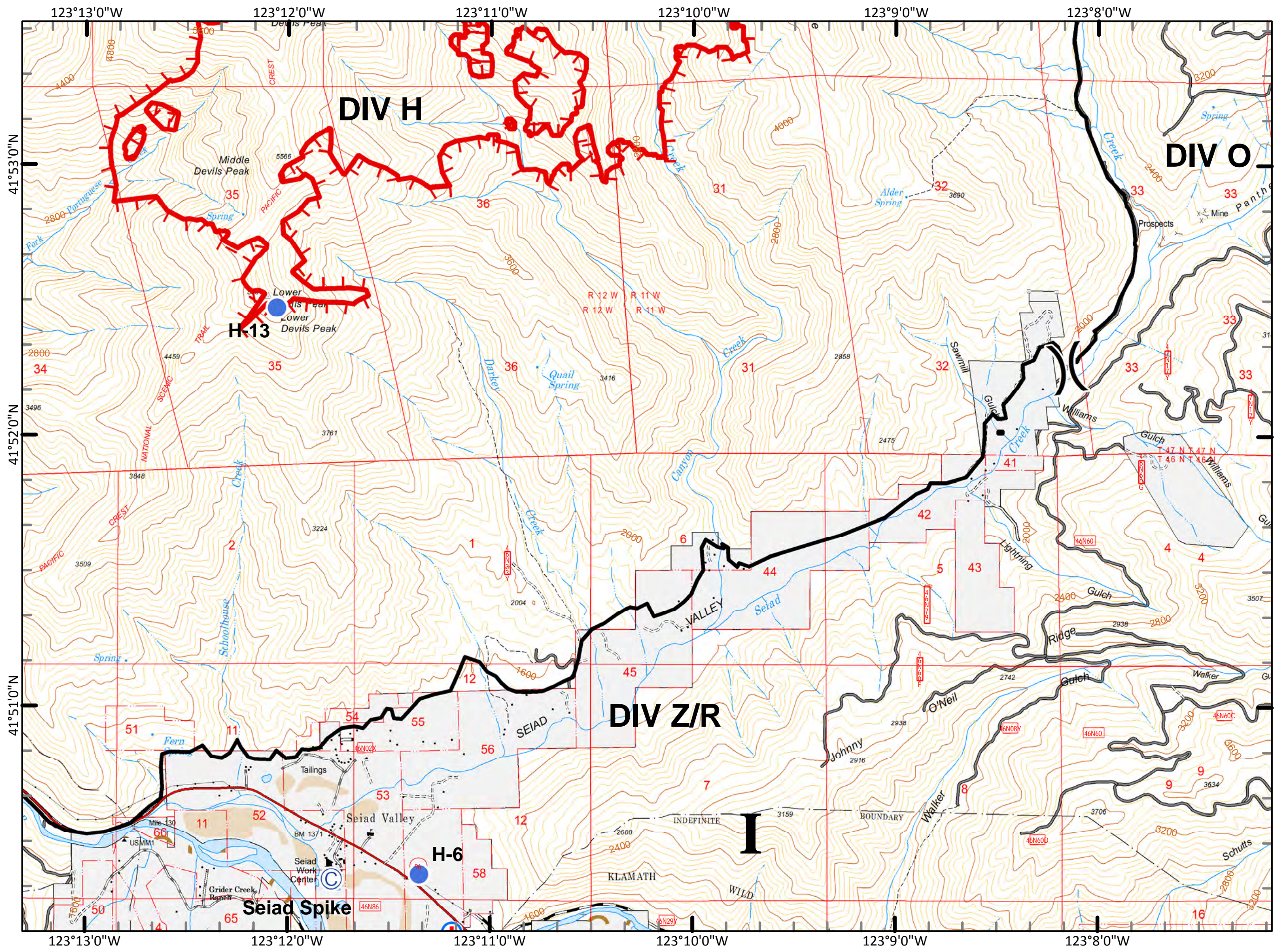
MAP INDEX

- Division
- Branch
- Road
- Pacific Crest Trail
- Other Trail
- Closed Route
- Camp
- Drop Point
- Extraction
- Helispot
- MediVac Site
- Sling
- Water Source

MAP INDEX

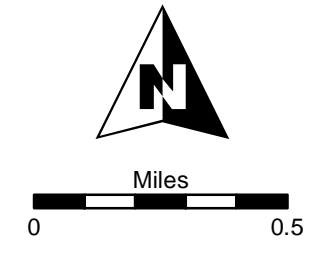


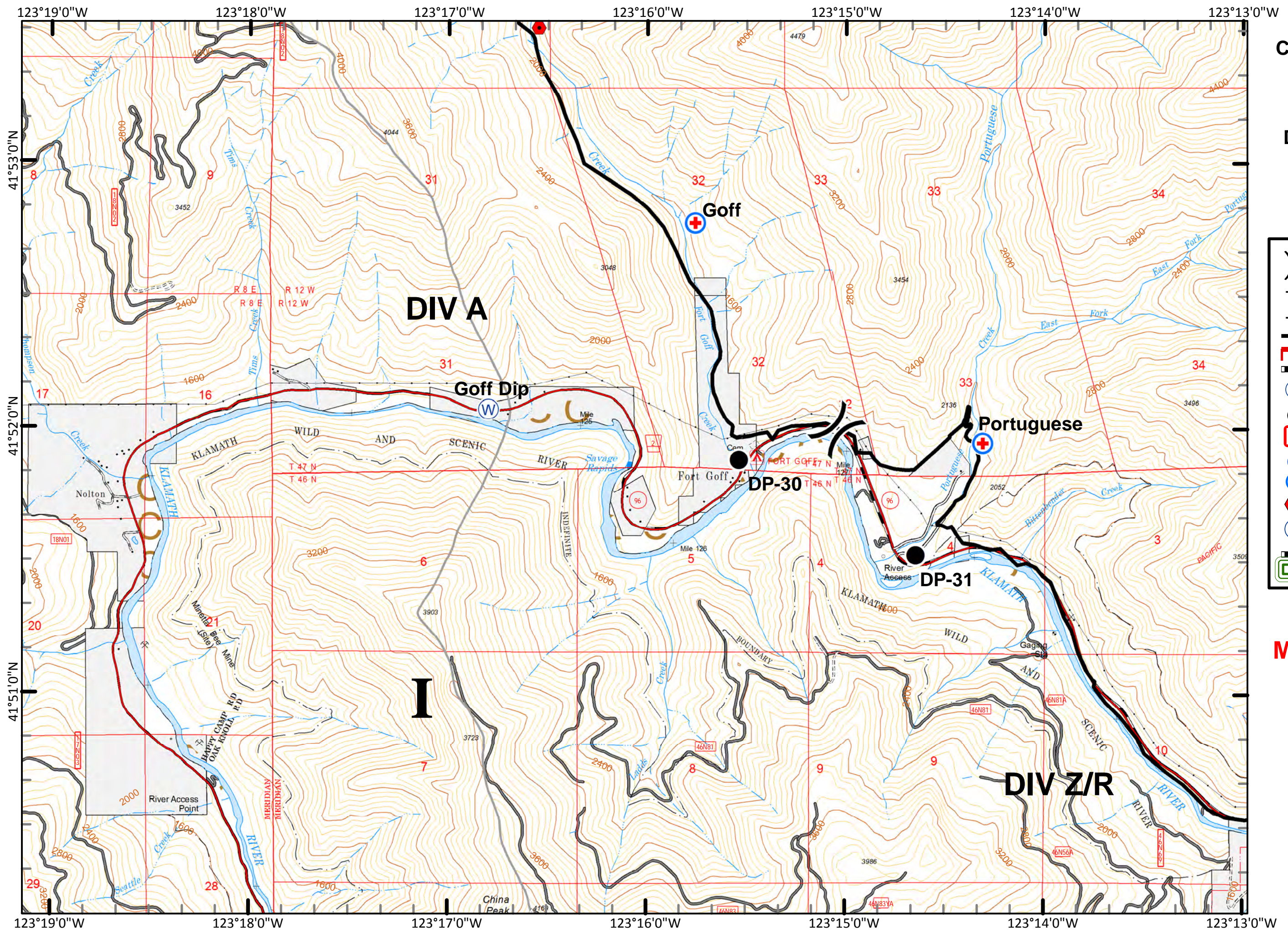
Fort Complex
CA-KNF-0005659
IAP
9/04/2012
DAY SHIFT
Datum: NAD 83
Acres: 21,233



- Division
- Branch
- Completed Line
- Uncontrolled Fire Edge
- Vehicle Weed Wash
- Camp
- Drop Point
- Extraction
- Helispot
- MediVac Site
- Sling
- Water Source
- Vehicle Weed Wash
- Sensitive Plant Areas and Wilderness

MAP PAGE: 1

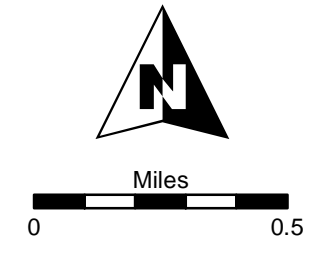




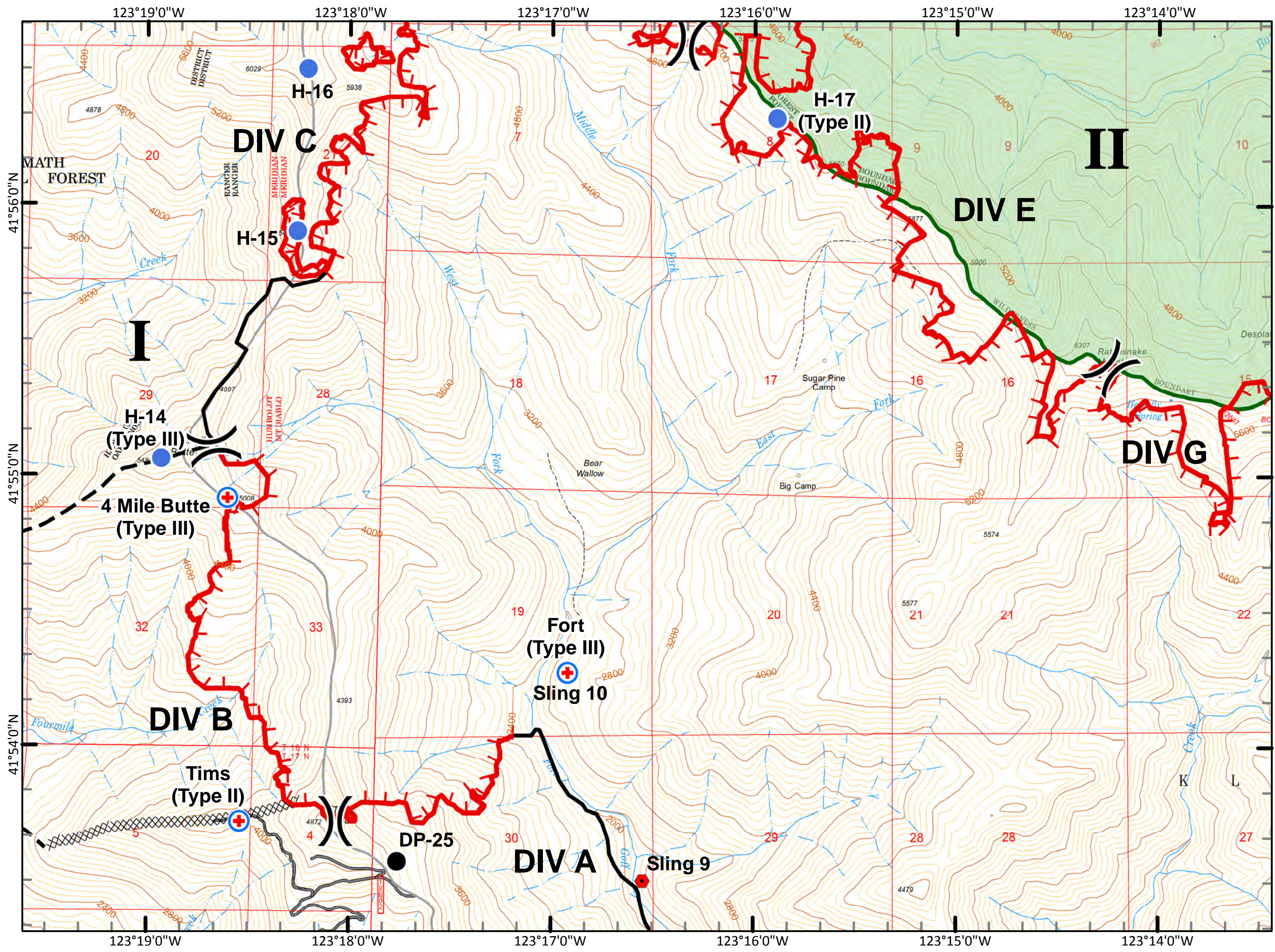
Fort Complex
CA-KNF-0005659
IAP
9/04/2012
DAY SHIFT
Datum: NAD 83
Acres: 21,233

- Division
- Branch
- Completed Line
- Uncontrolled Fire Edge
- Vehicle Weed Wash
- Camp
- Drop Point
- Extraction
- Helispot
- MediVac Site
- Sling
- Water Source
- Vehicle Weed Wash Sensitive Plant Areas and Wilderness

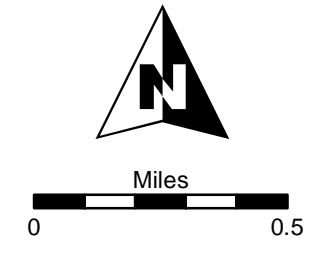
MAP PAGE: 2



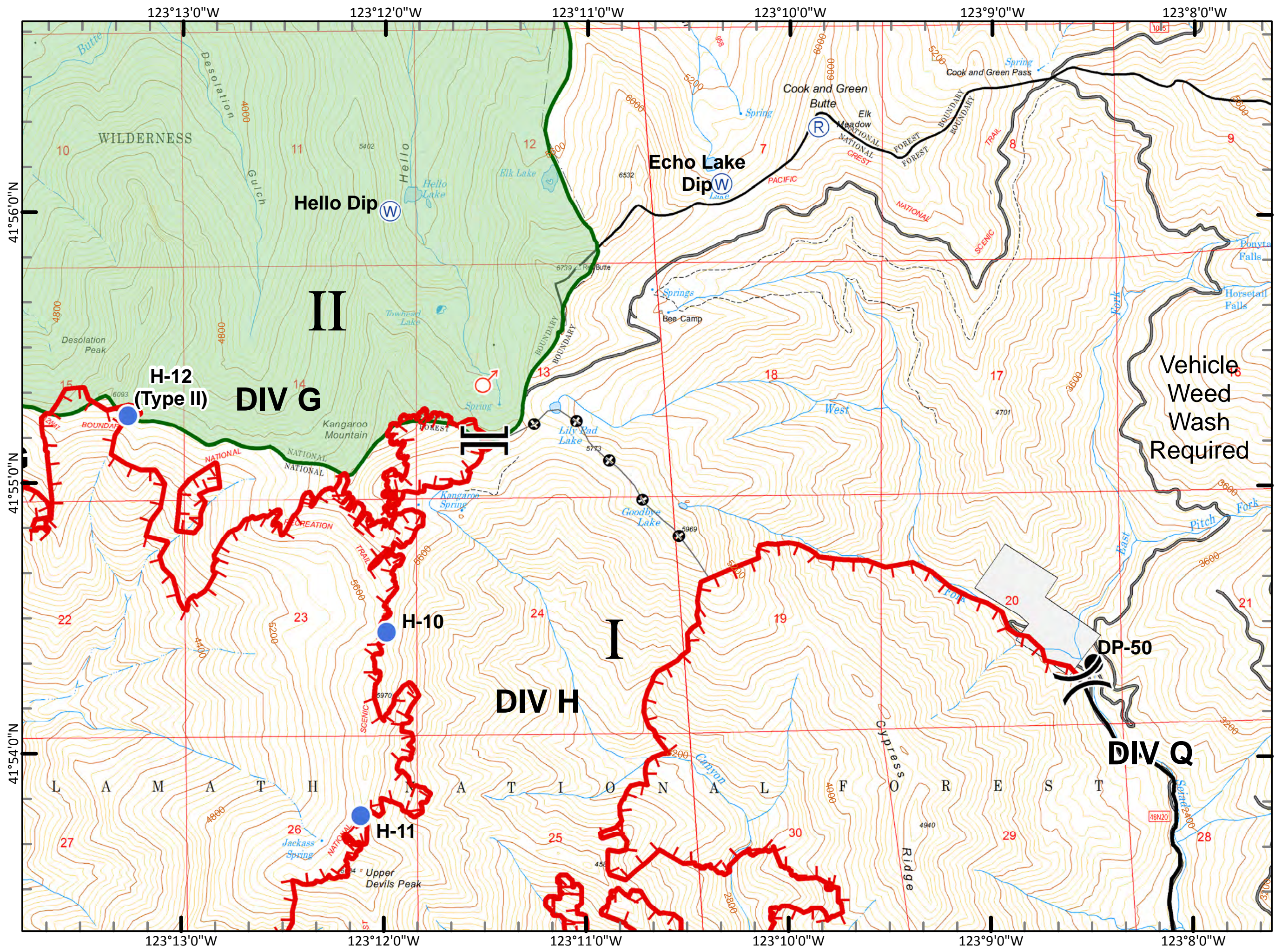
Fort Complex
CA-KNF-0005659
IAP
9/04/2012
DAY SHIFT
Datum: NAD 83
Acres: 21,233



MAP PAGE: 3

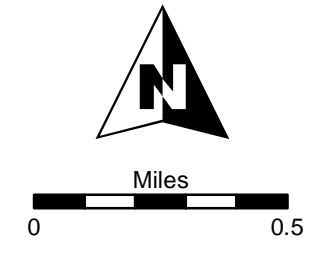


Fort Complex
 CA-KNF-0005659
 IAP
 9/04/2012
 DAY SHIFT
 Datum: NAD 83
 Acres: 21,233
















	Division
	Branch
	Completed Line
	Uncontrolled Fire Edge
	Vehicle Weed Wash
	Camp
	Drop Point
	Extraction
	Helispot
	MediVac Site
	Sling
	Water Source
	Vehicle Weed Wash Sensitive Plant Areas and Wilderness

MAP PAGE: 4



Fort Complex
CA-KNF-0005659
IAP
9/04/2012
DAY SHIFT
Datum: NAD 83
Acres: 21,233

-  Division
-  Branch
-  Completed Line
-  Uncontrolled Fire Edge
-  Vehicle Weed Wash
-  Camp
-  Drop Point
-  Extraction
-  Helispot
-  MediVac Site
-  Sling
-  Water Source
-  Vehicle Weed Wash Sensitive Plant Areas and Wilderness

MAP PAGE: 5

