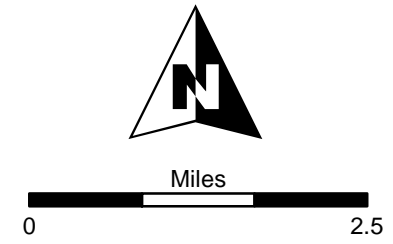
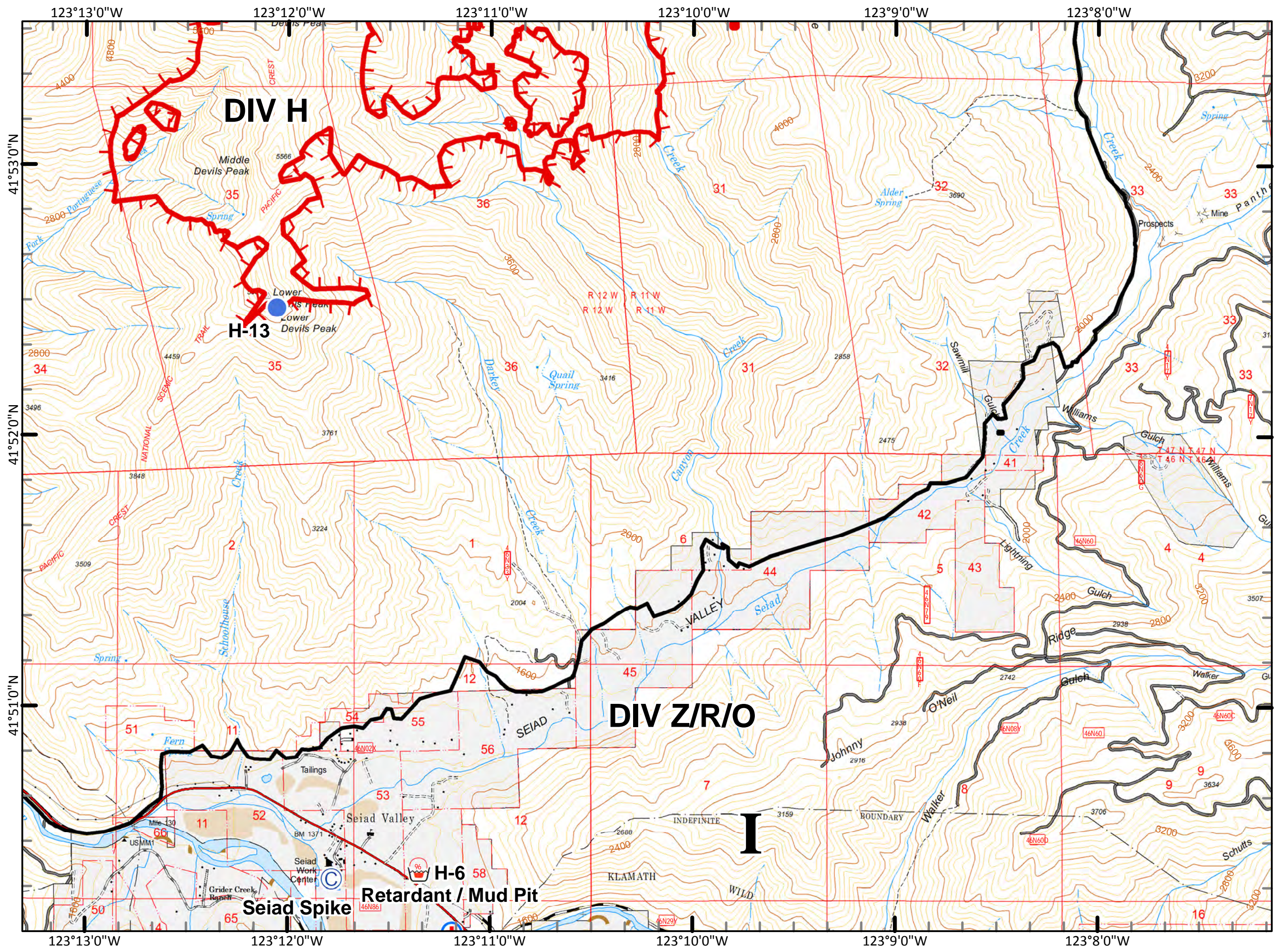


|  |                     |
|--|---------------------|
|  | Division            |
|  | Branch              |
|  | Road                |
|  | Pacific Crest Trail |
|  | Other Trail         |
|  | Closed Route        |
|  | MediVac Site        |
|  | Helispot            |
|  | Drop Point          |
|  | Sling               |
|  | Retardent/Mud Pit   |
|  | Water Source        |
|  | Camp                |

**MAP INDEX**

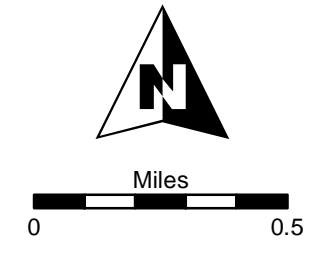


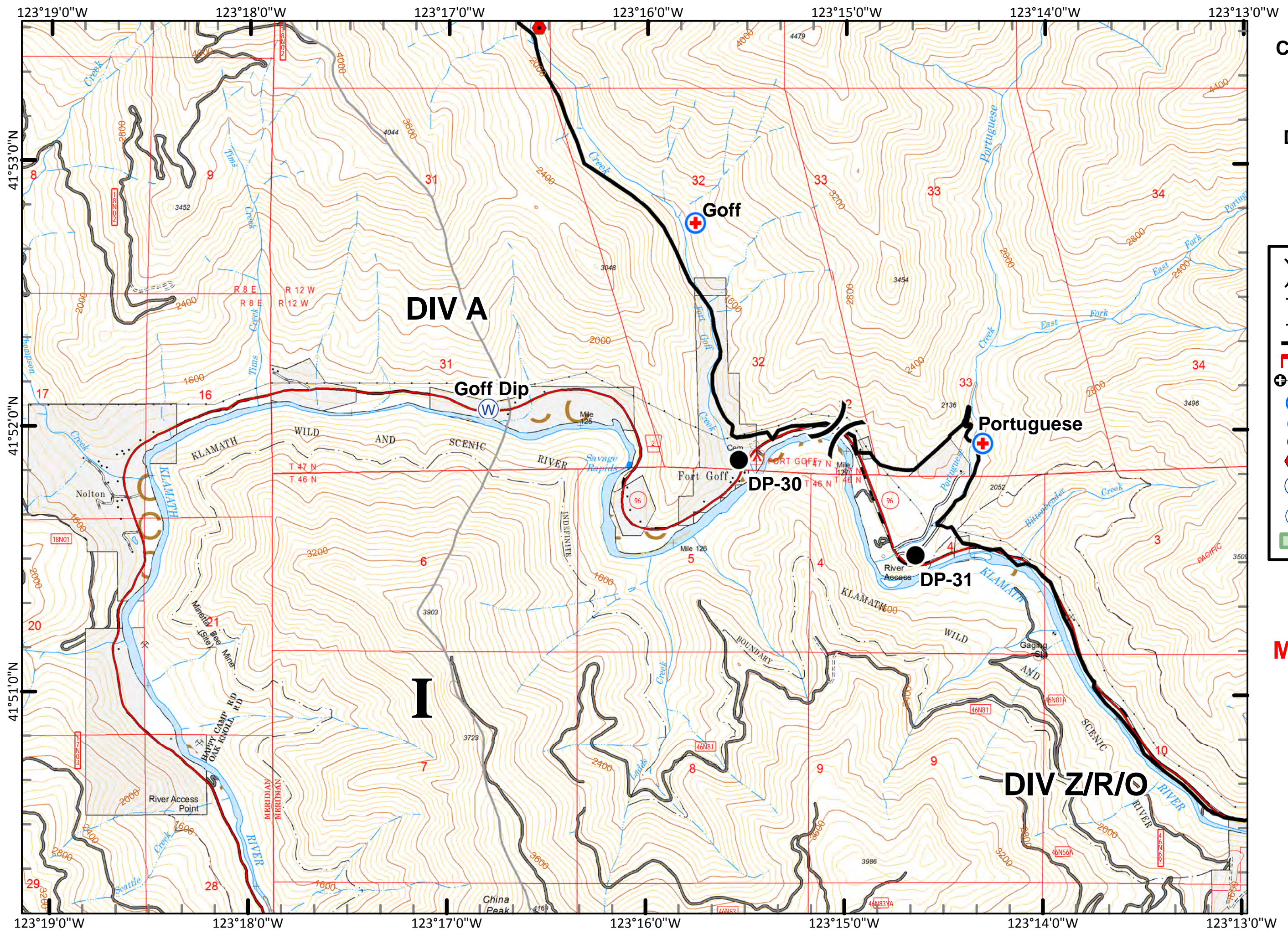
**Fort Complex**  
**CA-KNF-0005659**  
**IAP**  
**9/05/2012**  
**DAY SHIFT**  
**Datum: NAD 83**  
**Acres: 21,483**















- Division
- Branch
- Completed Line
- Uncontrolled Fire Edge
- Rock Barrier
- MediVac Site
- Helispot
- Drop Point
- Sling
- Water Source
- Camp
- Sensitive Plant Areas and Wilderness

**MAP PAGE: 1**

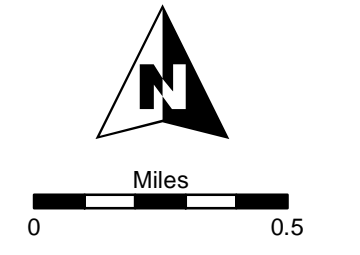




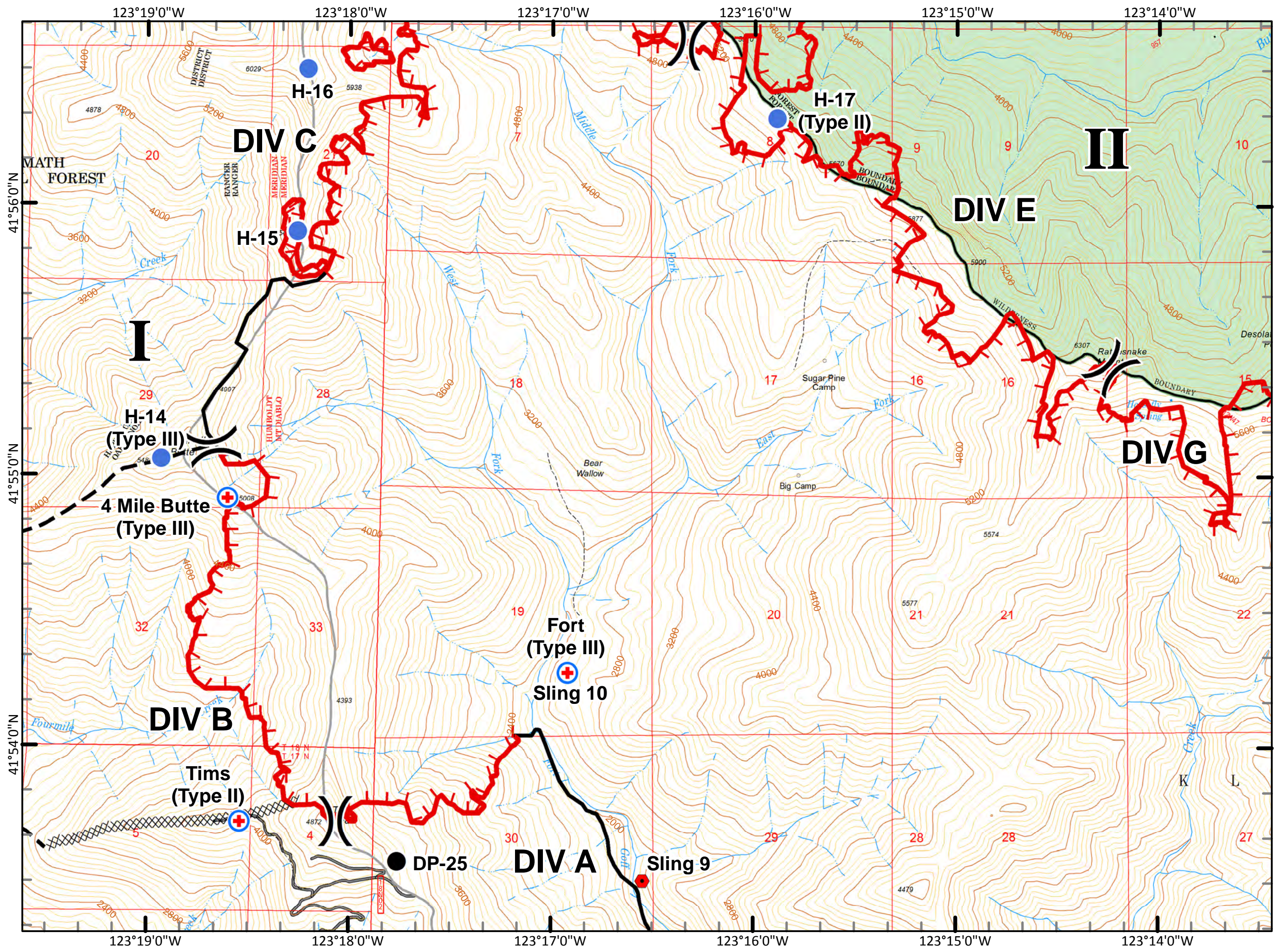
**Fort Complex**  
**CA-KNF-0005659**  
**IAP**  
**9/05/2012**  
**DAY SHIFT**  
**Datum: NAD 83**  
**Acres: 21,483**

-  Division
-  Branch
-  Completed Line
-  Uncontrolled Fire Edge
-  Rock Barrier
-  MediVac Site
-  Helispot
-  Drop Point
-  Sling
-  Water Source
-  Camp
-  Sensitive Plant Areas and Wilderness

**MAP PAGE: 2**

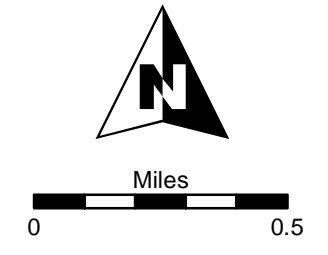


**Fort Complex**  
**CA-KNF-0005659**  
**IAP**  
**9/05/2012**  
**DAY SHIFT**  
**Datum: NAD 83**  
**Acres: 21,483**

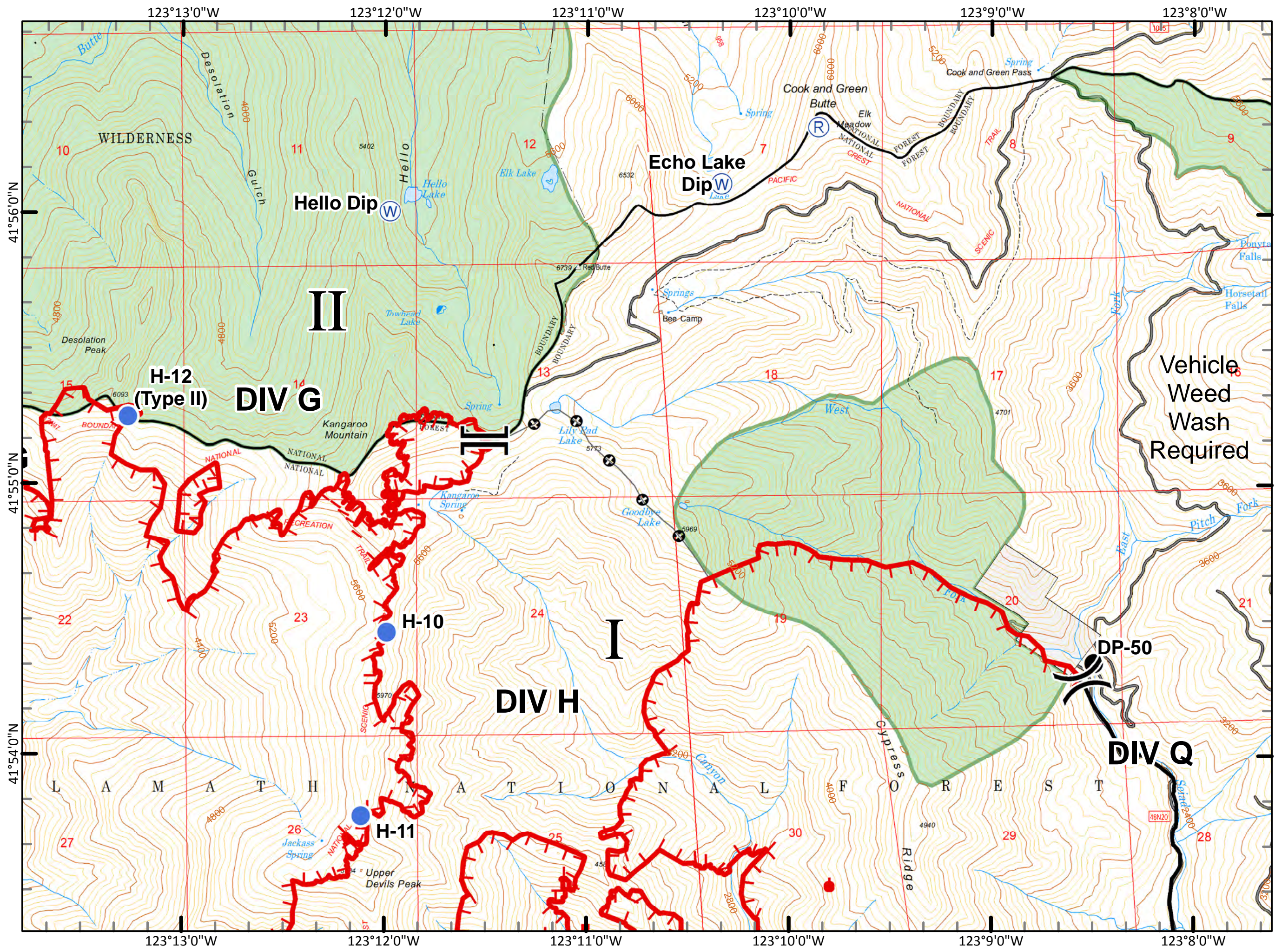


|  |                                      |
|--|--------------------------------------|
|  | Division                             |
|  | Branch                               |
|  | Completed Line                       |
|  | Uncontrolled Fire Edge               |
|  | Rock Barrier                         |
|  | MediVac Site                         |
|  | Helispot                             |
|  | Drop Point                           |
|  | Sling                                |
|  | Water Source                         |
|  | Camp                                 |
|  | Sensitive Plant Areas and Wilderness |

**MAP PAGE: 3**



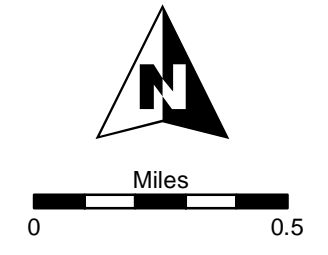
Fort Complex  
 CA-KNF-0005659  
 IAP  
 9/05/2012  
 DAY SHIFT  
 Datum: NAD 83  
 Acres: 21,483




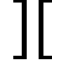










|  |                                      |
|--|--------------------------------------|
|  | Division                             |
|  | Branch                               |
|  | Completed Line                       |
|  | Uncontrolled Fire Edge               |
|  | Rock Barrier                         |
|  | MediVac Site                         |
|  | Helispot                             |
|  | Drop Point                           |
|  | Sling                                |
|  | Water Source                         |
|  | Camp                                 |
|  | Sensitive Plant Areas and Wilderness |

Vehicle  
 Weed  
 Wash  
 Required

MAP PAGE: 4



**Fort Complex**  
**CA-KNF-0005659**  
**IAP**  
**9/05/2012**  
**DAY SHIFT**  
**Datum: NAD 83**  
**Acres: 21,483**

-  Division
-  Branch
-  Completed Line
-  Uncontrolled Fire Edge
-  Rock Barrier
-  MediVac Site
-  Helispot
-  Drop Point
-  Sling
-  Water Source
-  Camp
-  Sensitive Plant Areas and Wilderness

**MAP PAGE: 5**

