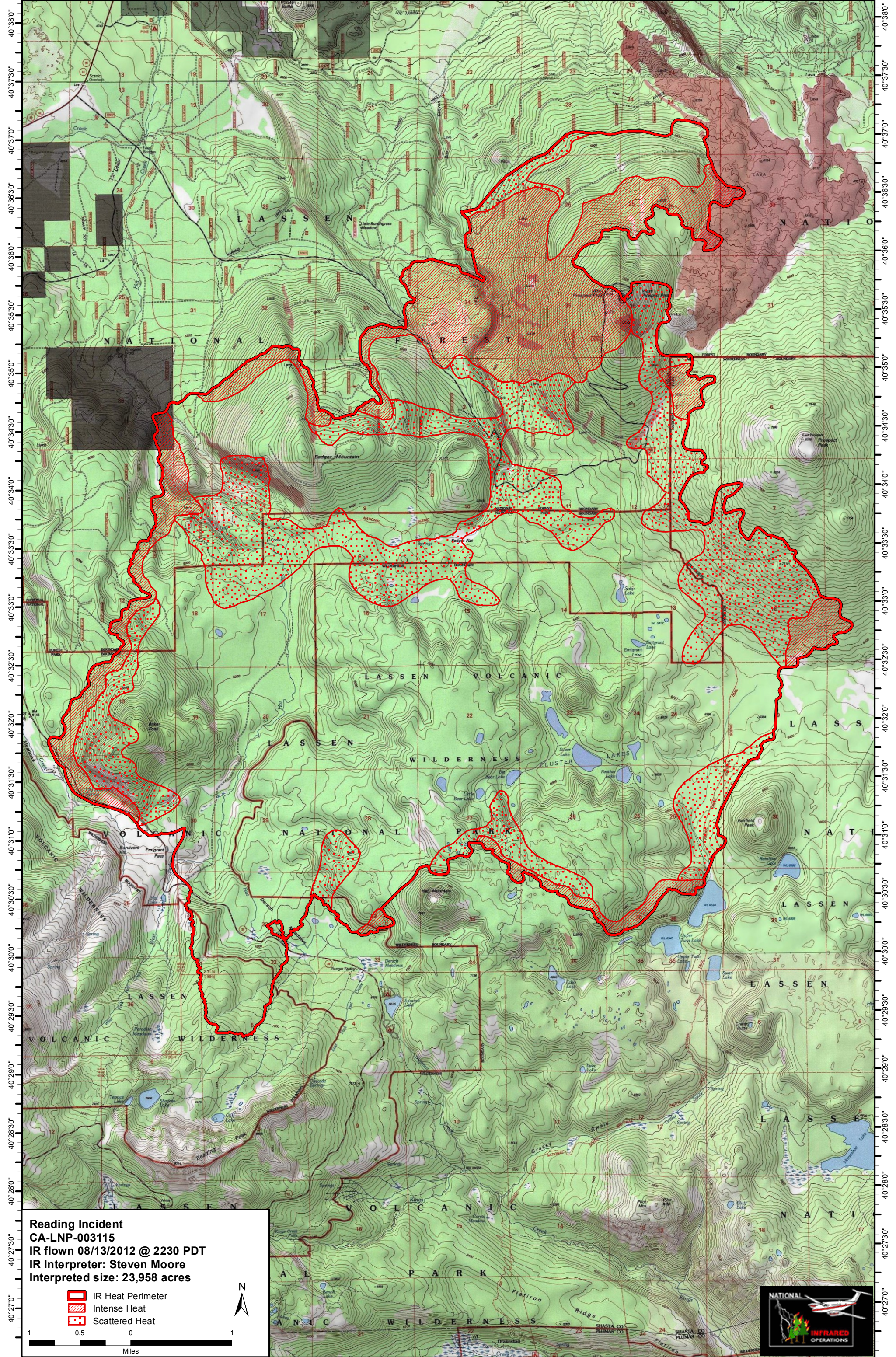



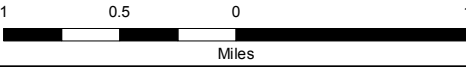


-121°29'0" -121°28'30" -121°28'0" -121°27'30" -121°27'0" -121°26'30" -121°26'0" -121°25'30" -121°25'0" -121°24'30" -121°24'0" -121°23'30" -121°23'0" -121°22'30" -121°22'0" -121°21'30" -121°21'0" -121°20'30" -121°20'0"



**Reading Incident**  
**CA-LNP-003115**  
**IR flown 08/13/2012 @ 2230 PDT**  
**IR Interpreter: Steven Moore**  
**Interpreted size: 23,958 acres**

-  IR Heat Perimeter
-  Intense Heat
-  Scattered Heat



-121°29'15" -121°28'45" -121°28'15" -121°27'45" -121°27'15" -121°26'45" -121°26'15" -121°25'45" -121°25'15" -121°24'45" -121°24'15" -121°23'45" -121°23'15" -121°22'45" -121°22'15" -121°21'45" -121°21'15" -121°20'45" -121°20'15"