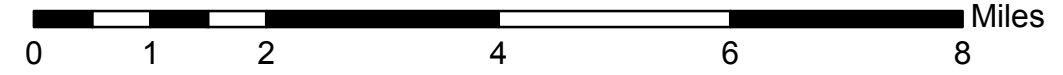


**North Pass Fire**  
**CA-MNF-1446**  
**CA-MEU-5763**

- Completed Line
- Completed Dozer Line
- Uncontrolled Fire Edge

- Division
- Branch
- Drop Point
- Safety Zone
- Drop Point

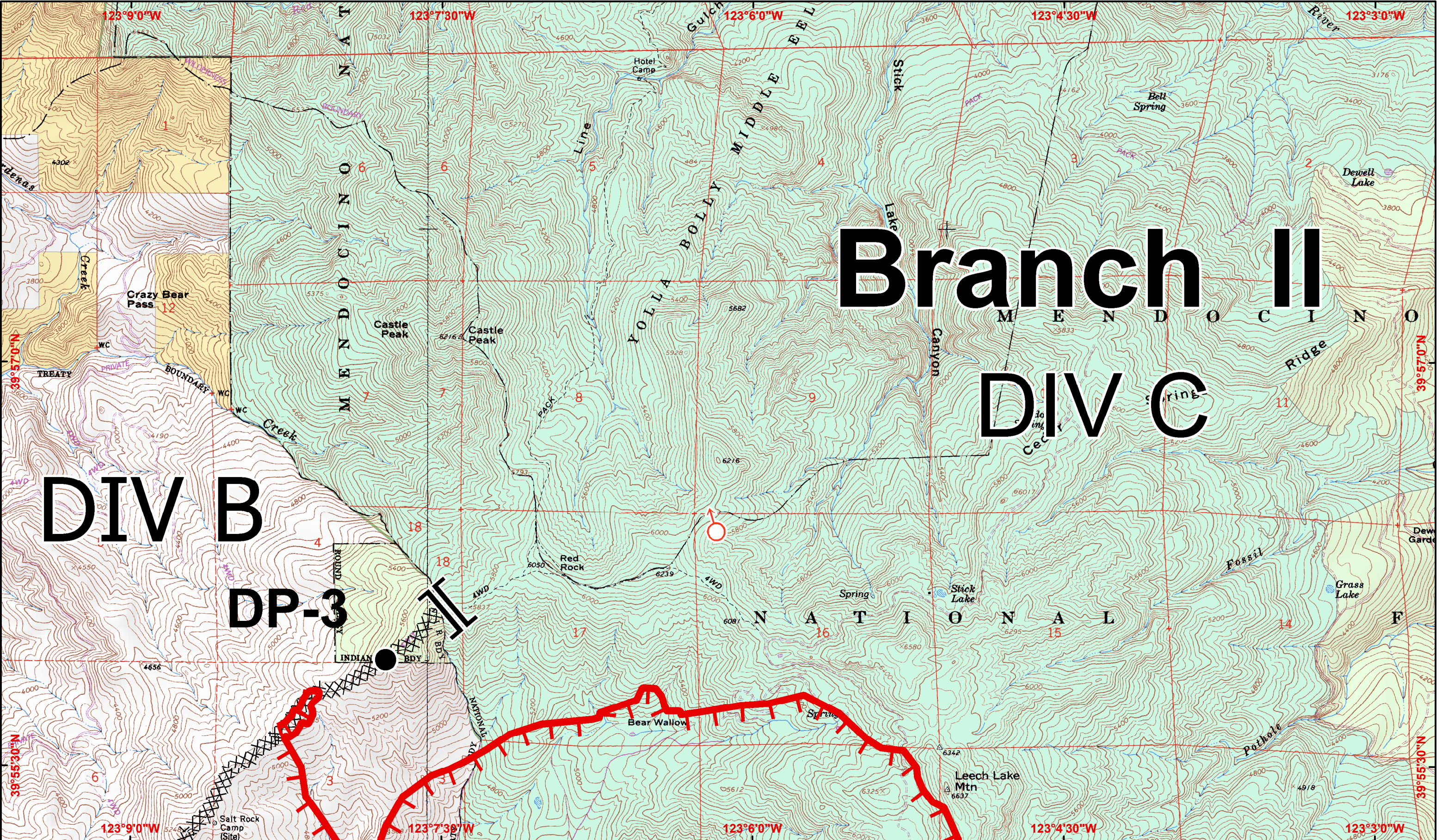
- Forest Road
- US, State, County Highways
- Major Roads



1:104,820  
 CONTOUR INTERVAL 40 FEET







**IAP Map** August 24, 2012  
 Page 1 0700-0700  
 NAD 83, UTM Zone 10

**North Pass Fire**  
**CA-MNF-1446**  
**CA-MEU-5763**

- Completed Line
- Completed Dozer Line
- Uncontrolled Fire Edge
- Contingency Line

- Division
- Branch
- Drop Point
- Safety Zone
- Drop Point

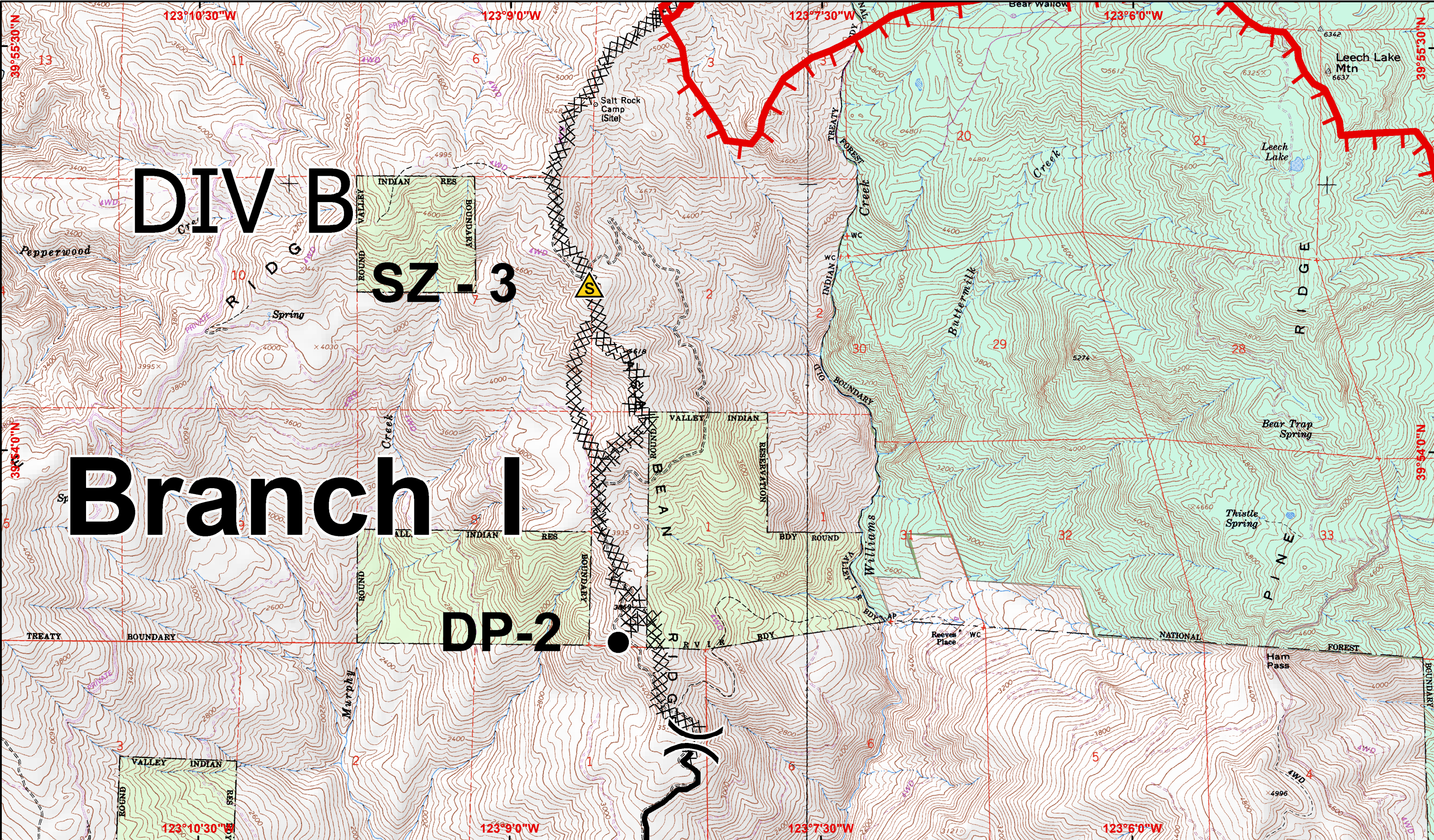
- United States Bureau of Land Management
- US Forest Service
- Bureau of Indian Affairs
- Wilderness Areas



1:24,000  
 CONTOUR INTERVAL 40 FEET







**IAP Map** August 24, 2012  
 Page 2 0700-0700  
 NAD 83, UTM Zone 10

**North Pass Fire**  
**CA-MNF-1446**  
**CA-MEU-5763**

- Completed Line
- Completed Dozer Line
- Uncontrolled Fire Edge
- Contingency Line

- Division
- Branch
- Drop Point
- Safety Zone
- Drop Point

- United States Bureau of Land Management
- US Forest Service
- Bureau of Indian Affairs
- Wilderness Areas



1:24,000  
 CONTOUR INTERVAL 40 FEET

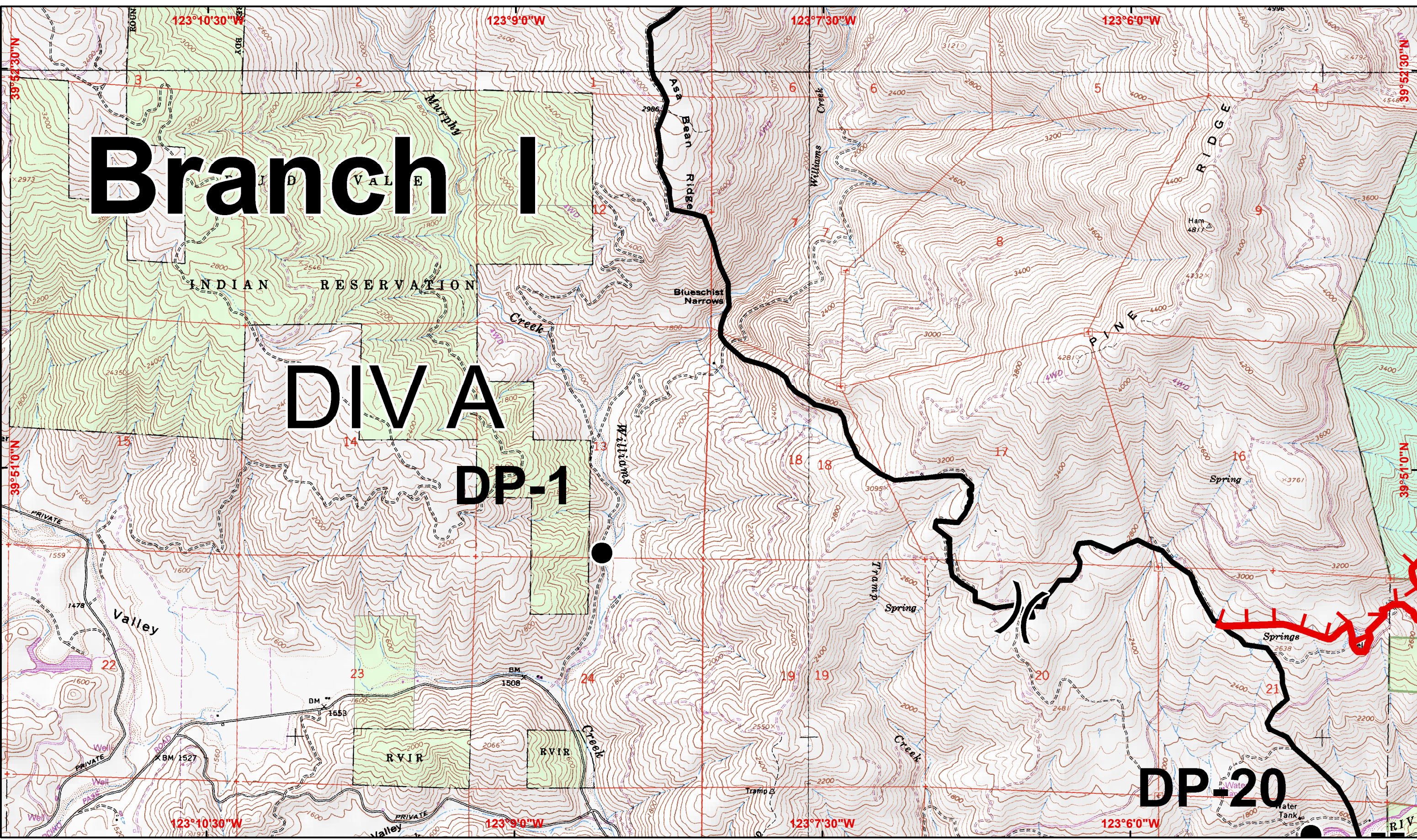




# Branch I

# DIVA DP-1

# DP-20



**IAP Map** August 24, 2012  
Page 3 0700-0700  
NAD 83, UTM Zone 10

**North Pass Fire**  
**CA-MNF-1446**  
**CA-MEU-5763**

- Completed Line
- Completed Dozer Line
- Uncontrolled Fire Edge
- Contingency Line

- Division
- Branch
- Drop Point
- Safety Zone
- Drop Point

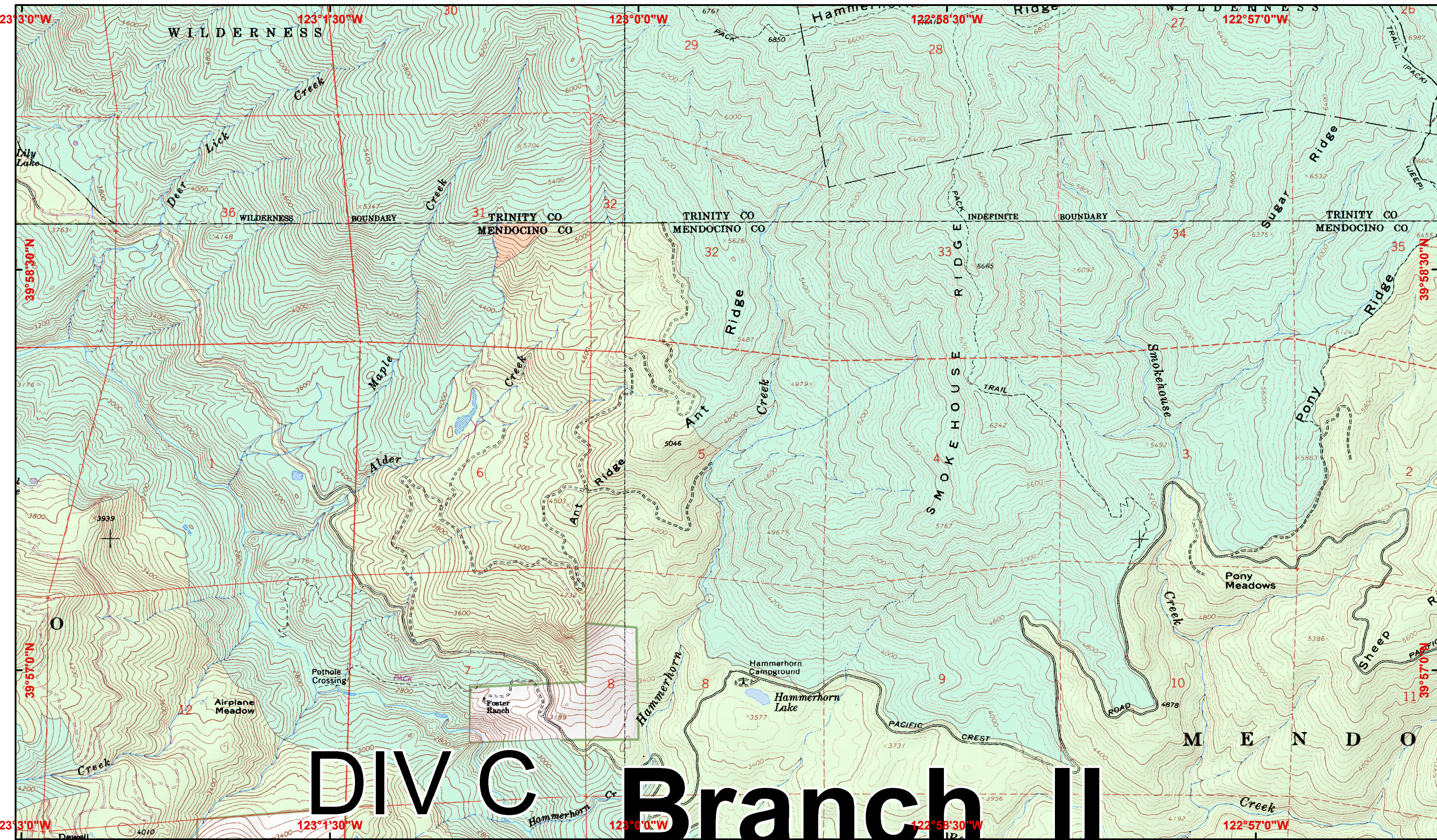
- United States Bureau of Land Management
- US Forest Service
- Bureau of Indian Affairs
- Wilderness Areas



1:24,000  
CONTOUR INTERVAL 40 FEET







**IAP Map** August 24, 2012  
 Page 4 0700-0700  
 NAD 83, UTM Zone 10

**North Pass Fire**  
**CA-MNF-1446**  
**CA-MEU-5763**

- Completed Line
- Completed Dozer Line
- Uncontrolled Fire Edge
- Contingency Line

- Division
- Branch
- Drop Point
- Safety Zone
- Drop Point

- United States Bureau of Land Management
- US Forest Service
- Bureau of Indian Affairs
- Wilderness Areas

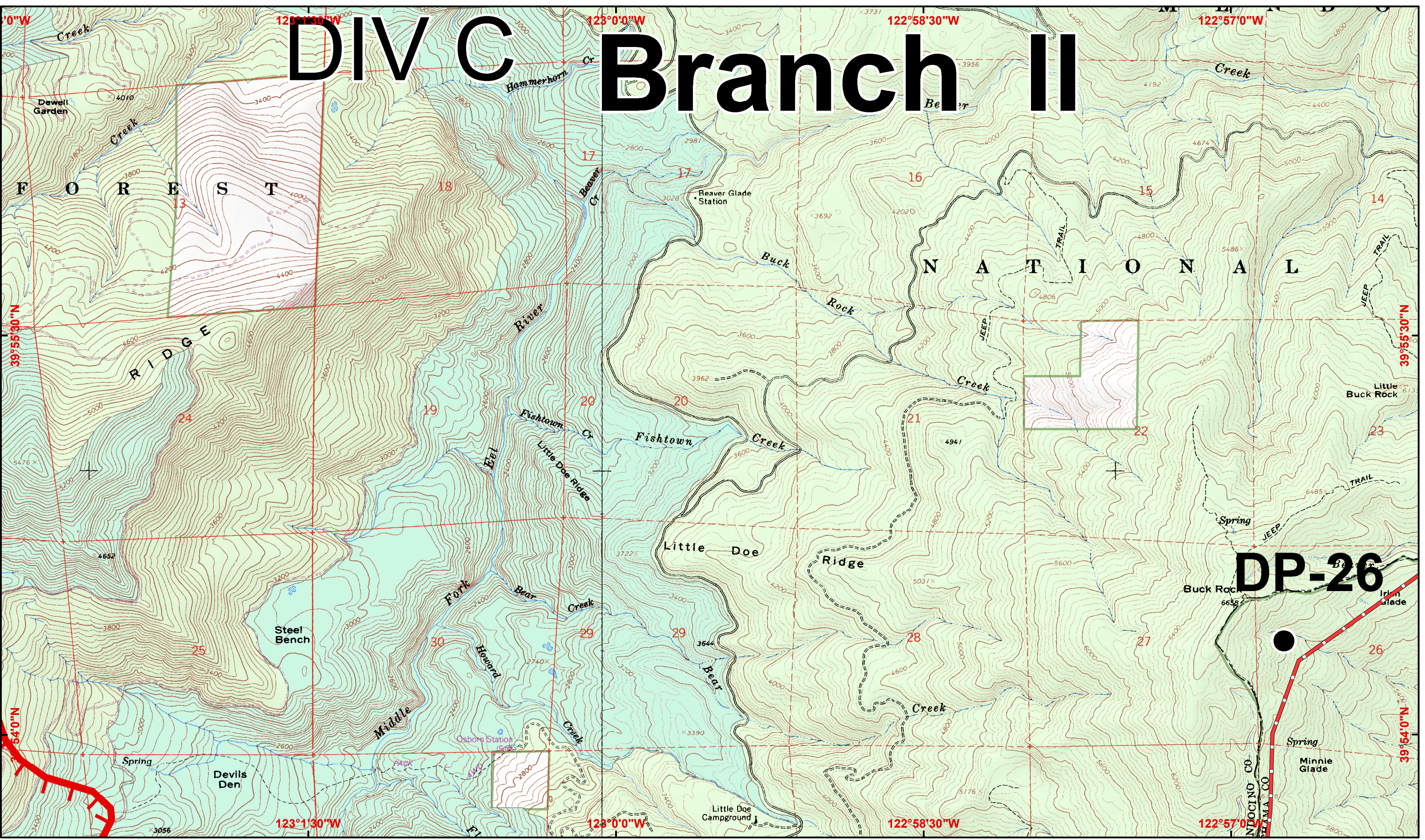


1:24,000  
 CONTOUR INTERVAL 40 FEET





# DIV C Branch II



**IAP Map** August 24, 2012  
 Page 5 0700-0700  
 NAD 83, UTM Zone 10

**North Pass Fire**  
**CA-MNF-1446**  
**CA-MEU-5763**

- Completed Line
- Completed Dozer Line
- Uncontrolled Fire Edge
- Contingency Line

- Division
- Branch
- Drop Point
- Safety Zone
- Drop Point

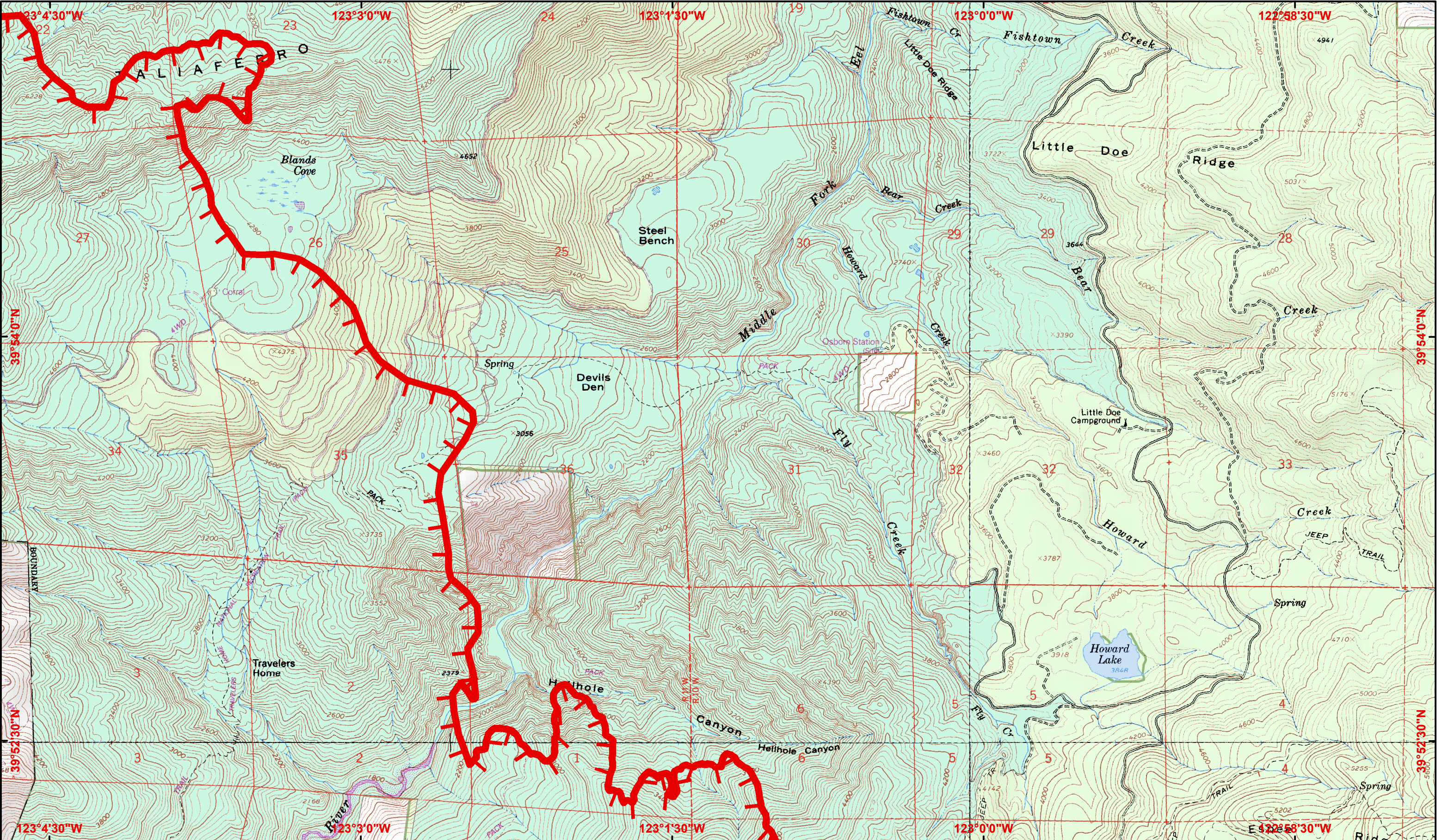
- United States Bureau of Land Management
- US Forest Service
- Bureau of Indian Affairs
- Wilderness Areas



1:24,000  
 CONTOUR INTERVAL 40 FEET







**IAP Map** August 24, 2012  
 Page 6 0700-0700  
 NAD 83, UTM Zone 10

**North Pass Fire**  
**CA-MNF-1446**  
**CA-MEU-5763**

- Completed Line
- Completed Dozer Line
- Uncontrolled Fire Edge
- Contingency Line

- Division
- Branch
- Drop Point
- Safety Zone
- Drop Point

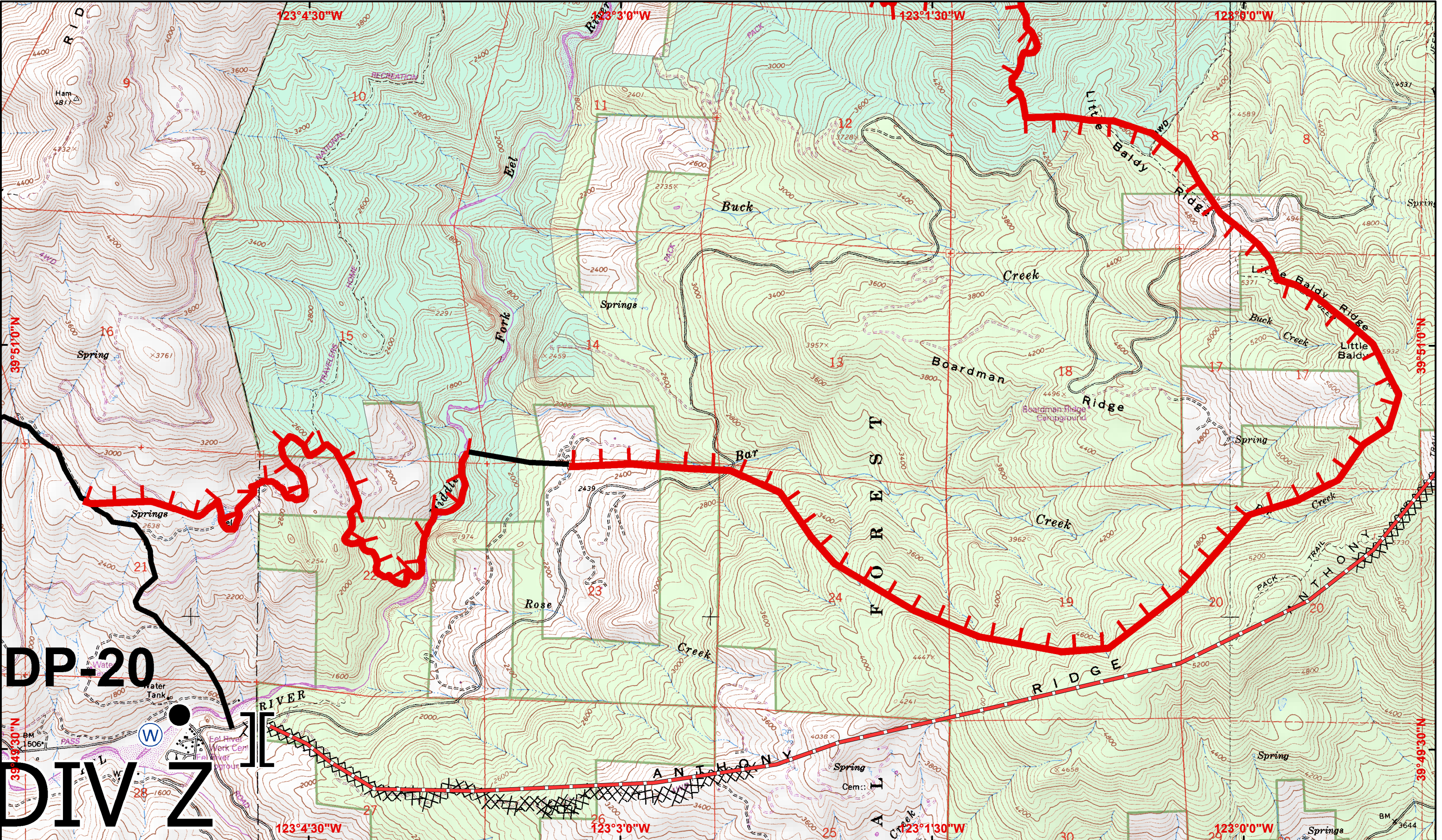
- United States Bureau of Land Management
- US Forest Service
- Bureau of Indian Affairs
- Wilderness Areas



1:24,000  
 CONTOUR INTERVAL 40 FEET







**DP-20**  
**DIV Z**

**IAP Map** August 24, 2012  
Page 7 0700-0700  
NAD 83, UTM Zone 10

**North Pass Fire**  
**CA-MNF-1446**  
**CA-MEU-5763**

- Completed Line
- Completed Dozer Line
- Uncontrolled Fire Edge
- Contingency Line

- Division
- Branch
- Drop Point
- Safety Zone
- Drop Point

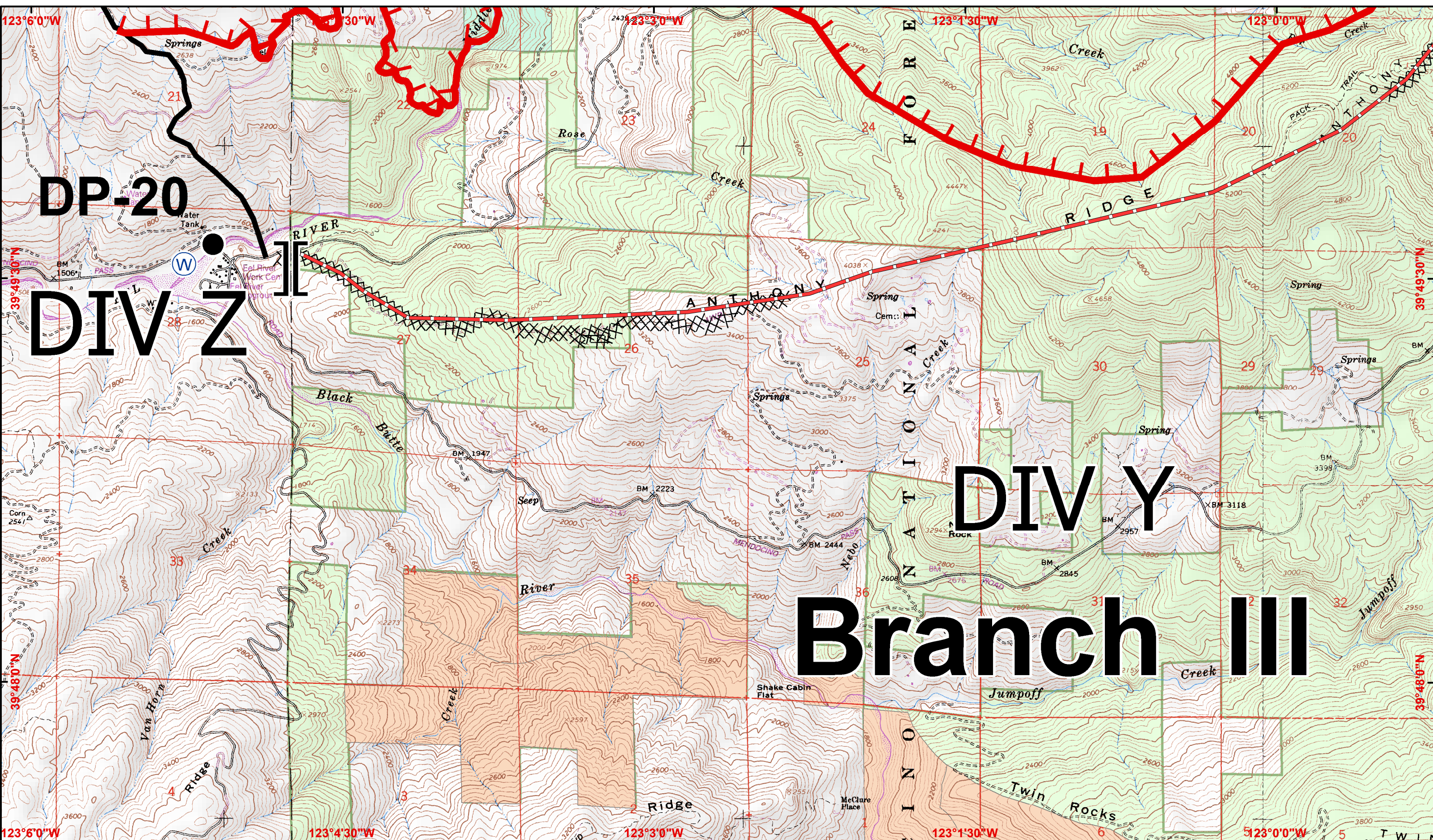
- United States Bureau of Land Management
- US Forest Service
- Bureau of Indian Affairs
- Wilderness Areas



1:24,000  
CONTOUR INTERVAL 40 FEET







**DP-20**  
**DIV Z**

**DIV Y**  
**Branch III**

**IAP Map** August 24, 2012  
Page 8 0700-0700  
NAD 83, UTM Zone 10

**North Pass Fire**  
**CA-MNF-1446**  
**CA-MEU-5763**

- Completed Line
- Completed Dozer Line
- Uncontrolled Fire Edge
- Contingency Line

- Division
- Branch
- Drop Point
- Safety Zone
- Drop Point

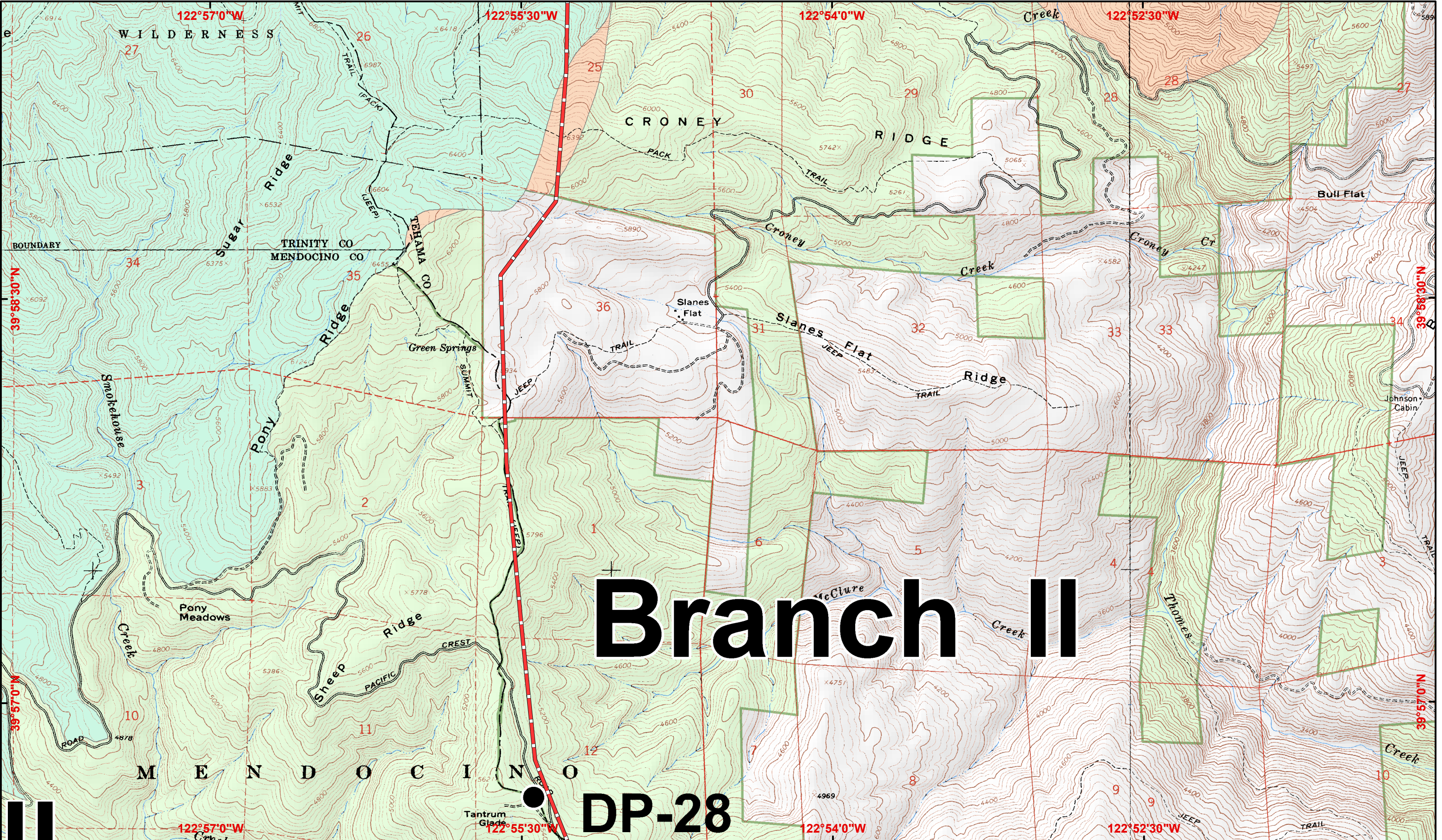
- United States Bureau of Land Management
- US Forest Service
- Bureau of Indian Affairs
- Wilderness Areas



1:24,000  
CONTOUR INTERVAL 40 FEET







**IAP Map** August 24, 2012  
 Page 9 0700-0700  
 NAD 83, UTM Zone 10

**North Pass Fire**  
**CA-MNF-1446**  
**CA-MEU-5763**

- Completed Line
- Completed Dozer Line
- Uncontrolled Fire Edge
- Contingency Line

- Division
- Branch
- Drop Point
- Safety Zone
- Drop Point

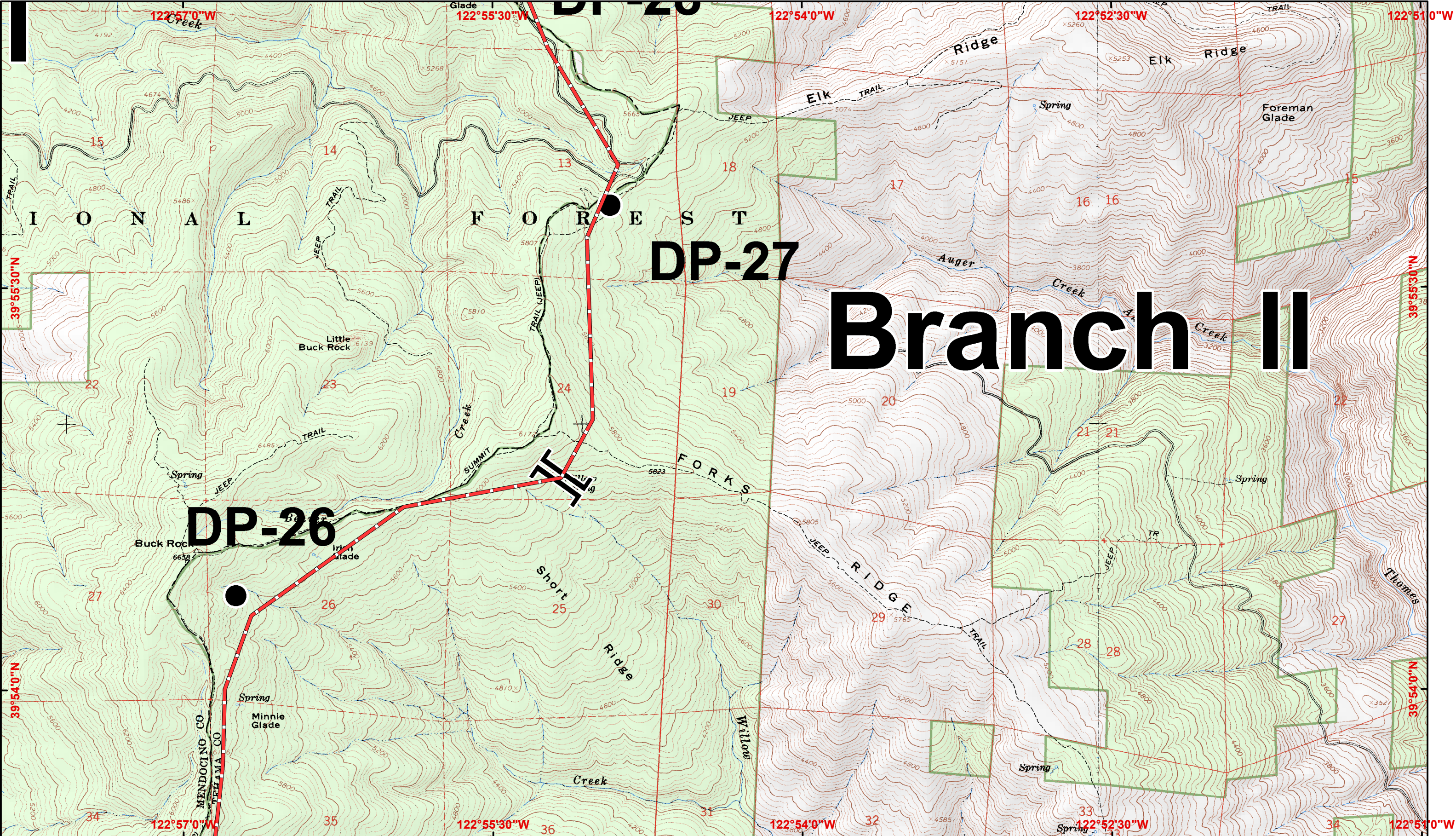
- United States Bureau of Land Management
- US Forest Service
- Bureau of Indian Affairs
- Wilderness Areas



1:24,000  
 CONTOUR INTERVAL 40 FEET







# Branch II

**IAP Map** August 24, 2012  
 Page 10 0700-0700  
 NAD 83, UTM Zone 10

**North Pass Fire**  
**CA-MNF-1446**  
**CA-MEU-5763**

- Completed Line
- Completed Dozer Line
- Uncontrolled Fire Edge
- Contingency Line

- Division
- Branch
- Drop Point
- Safety Zone
- Drop Point

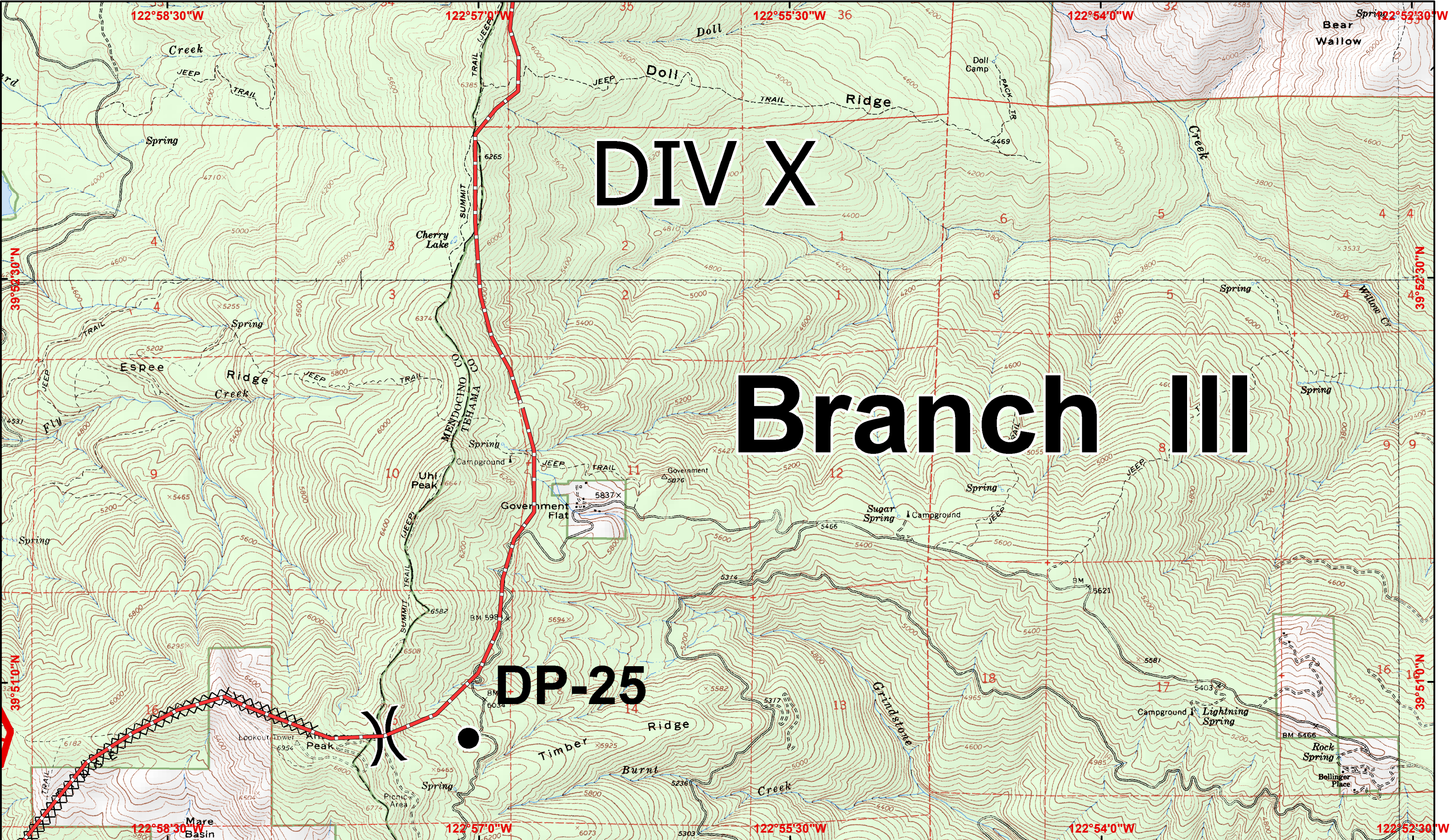
- United States Bureau of Land Management
- US Forest Service
- Bureau of Indian Affairs
- Wilderness Areas



1:24,000  
 CONTOUR INTERVAL 40 FEET







# DIV X

# Branch III

## DP-25

**IAP Map** August 24, 2012  
 Page 11 0700-0700  
 NAD 83, UTM Zone 10

**North Pass Fire**  
**CA-MNF-1446**  
**CA-MEU-5763**

- Completed Line
- Completed Dozer Line
- Uncontrolled Fire Edge
- Contingency Line

- Division
- Branch
- Drop Point
- Safety Zone
- Drop Point

- United States Bureau of Land Management
- US Forest Service
- Bureau of Indian Affairs
- Wilderness Areas



1:24,000  
 CONTOUR INTERVAL 40 FEET



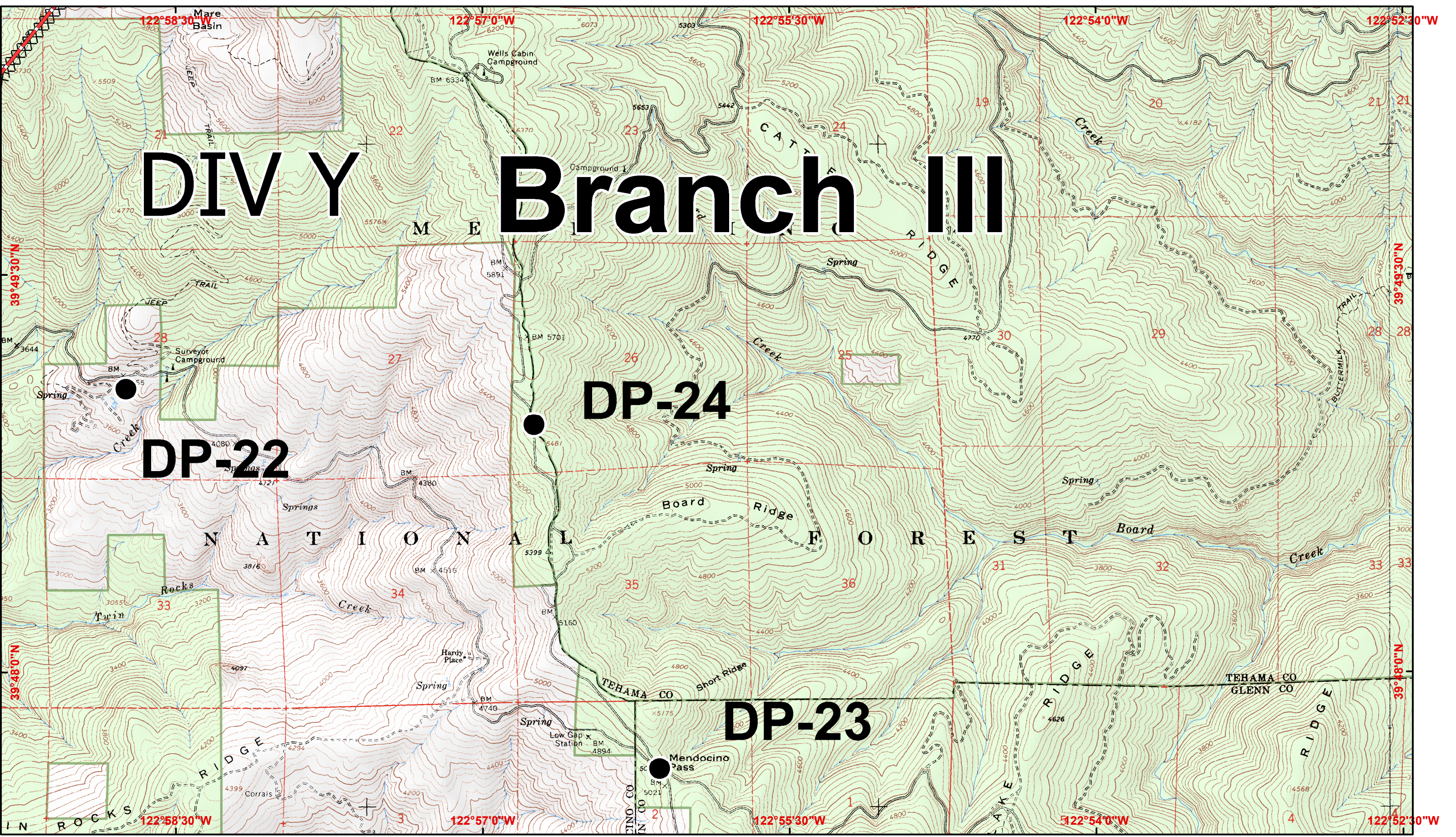


# DIVY Branch III

DP-22

DP-24

DP-23



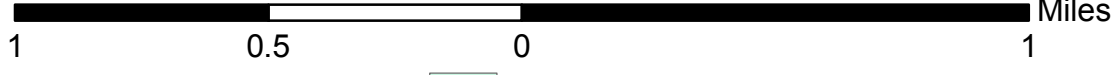
**IAP Map** August 24, 2012  
 Page 12 0700-0700  
 NAD 83, UTM Zone 10

**North Pass Fire**  
**CA-MNF-1446**  
**CA-MEU-5763**

- Completed Line
- Completed Dozer Line
- Uncontrolled Fire Edge
- Contingency Line

- Division
- Branch
- Drop Point
- Safety Zone
- Drop Point

- United States Bureau of Land Management
- US Forest Service
- Bureau of Indian Affairs
- Wilderness Areas



1:24,000  
 CONTOUR INTERVAL 40 FEET

