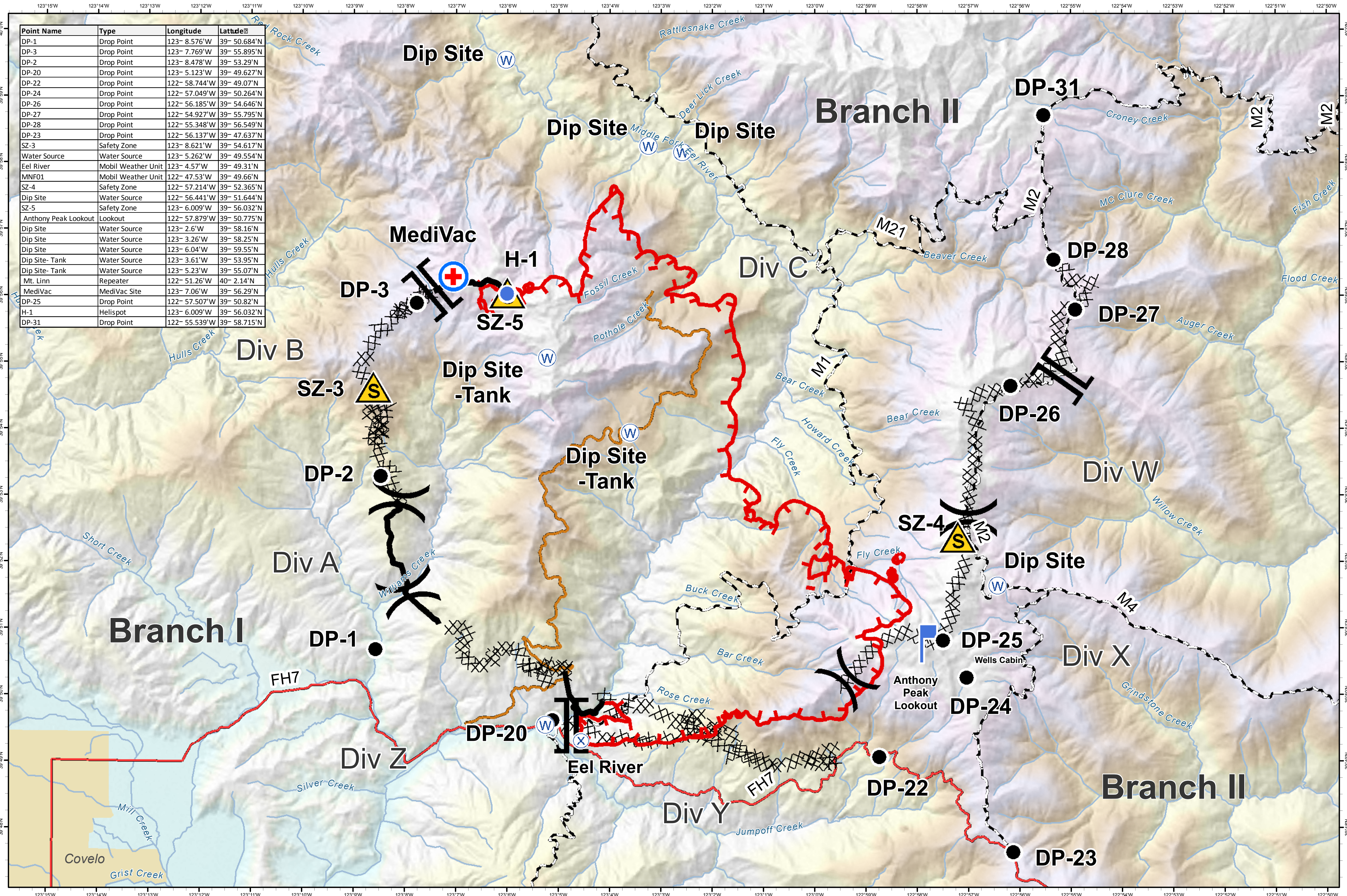


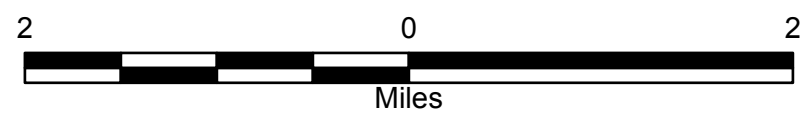
Point Name	Type	Longitude	Latitude
DP-1	Drop Point	123- 8.576'W	39- 50.684'N
DP-3	Drop Point	123- 7.769'W	39- 55.895'N
DP-2	Drop Point	123- 8.478'W	39- 53.29'N
DP-20	Drop Point	123- 5.123'W	39- 49.627'N
DP-22	Drop Point	122- 58.744'W	39- 49.07'N
DP-24	Drop Point	122- 57.049'W	39- 50.264'N
DP-26	Drop Point	122- 56.185'W	39- 54.646'N
DP-27	Drop Point	122- 54.927'W	39- 55.795'N
DP-28	Drop Point	122- 55.348'W	39- 56.549'N
DP-23	Drop Point	122- 56.137'W	39- 47.637'N
SZ-3	Safety Zone	123- 8.621'W	39- 54.617'N
Water Source	Water Source	123- 5.262'W	39- 49.554'N
Eel River	Mobil Weather Unit	123- 4.57'W	39- 49.31'N
MNF01	Mobil Weather Unit	122- 47.53'W	39- 49.66'N
SZ-4	Safety Zone	122- 57.214'W	39- 52.365'N
Dip Site	Water Source	122- 56.441'W	39- 51.644'N
SZ-5	Safety Zone	123- 6.009'W	39- 56.032'N
Anthony Peak Lookout	Lookout	122- 57.879'W	39- 50.775'N
Dip Site	Water Source	123- 2.6'W	39- 58.16'N
Dip Site	Water Source	123- 3.26'W	39- 58.25'N
Dip Site	Water Source	123- 6.04'W	39- 59.55'N
Dip Site- Tank	Water Source	123- 3.61'W	39- 53.95'N
Dip Site- Tank	Water Source	123- 5.23'W	39- 55.07'N
Mt. Linn	Repeater	122- 51.26'W	40- 2.14'N
MediVac	MediVac Site	123- 7.06'W	39- 56.29'N
DP-25	Drop Point	122- 57.507'W	39- 50.82'N
H-1	Helispot	123- 6.009'W	39- 56.032'N
DP-31	Drop Point	122- 55.539'W	39- 58.715'N



Aviation Map August 27, 2012 0700

North Pass Fire
CA-MNF-1446
CA-MEU-5763

- Completed Line
- Completed Dozer Line
- Uncontrolled Fire Edge
- Division
- Branch
- Drop Point
- Safety Zone
- RAWS Site
- Repeater Site
- Peak
- Helispot
- Dip Site
- Lookout



1:63,360
NAD 83, UTM Zone 10
Map by: Bob Noyes 08/27/2012 0230

