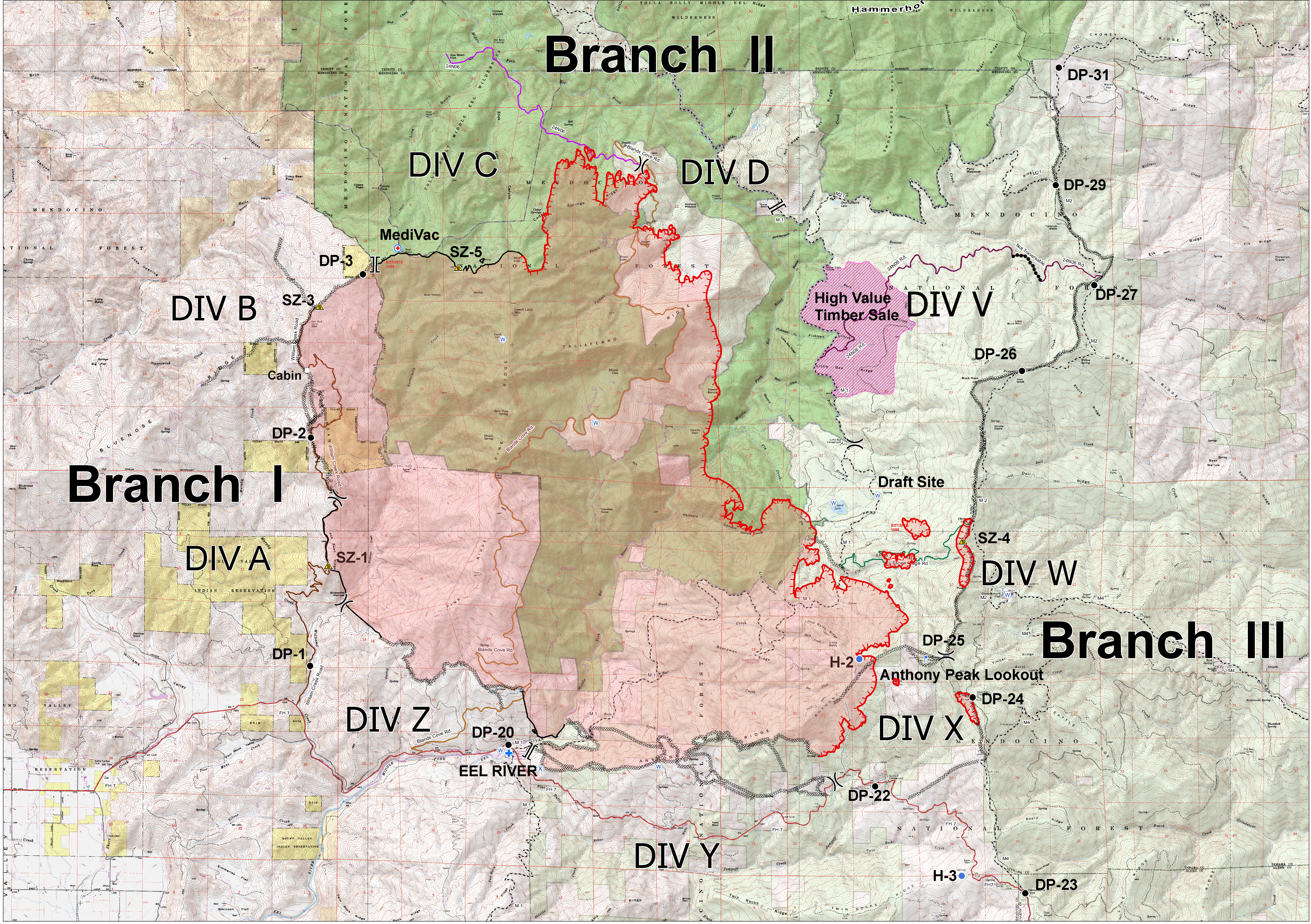


# Branch II



# Branch I

# Branch III

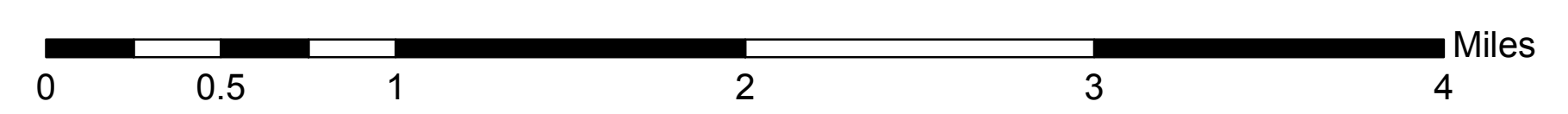
**Operations Map North Pass Fire**  
 August 29, 2012  
 0700 Hours  
**CA-MNF-1446**  
**CA-MEU-5763**

- Ownership**
- US Bureau of Land Management
  - Bureau of Indian Affairs
  - US Forest Service
  - Local

- Major Roads**
- Blands Cove Rd.
  - SH162
  - FH7
  - Espee Ridge Road
  - Williams Creek Road
  - 22N06 Road
  - M # Roads
  - 11W06
  - Not Traversable

- Wilderness Area**
- Wilderness Area
  - Completed Line
  - Completed Dozer Line
  - Uncontrolled Fire Edge

- MediVac Site
- Water Source
- Repeater
- Mobile Weather Station
- Cabin
- First Aid Station / Ambulance
- Lookout
- Safety Zone
- Division
- Branch
- High Value Timber Sale



1:30,000  
 CONTOUR INTERVAL 40 FEET

Fire perimeter is based on IR data from NIFC, 8/28/2012 0115 hrs

J. Harvey 20120829 0130

