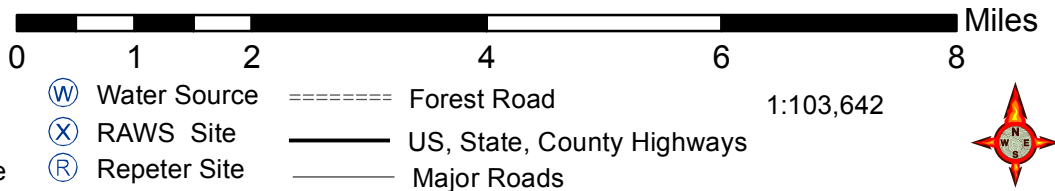
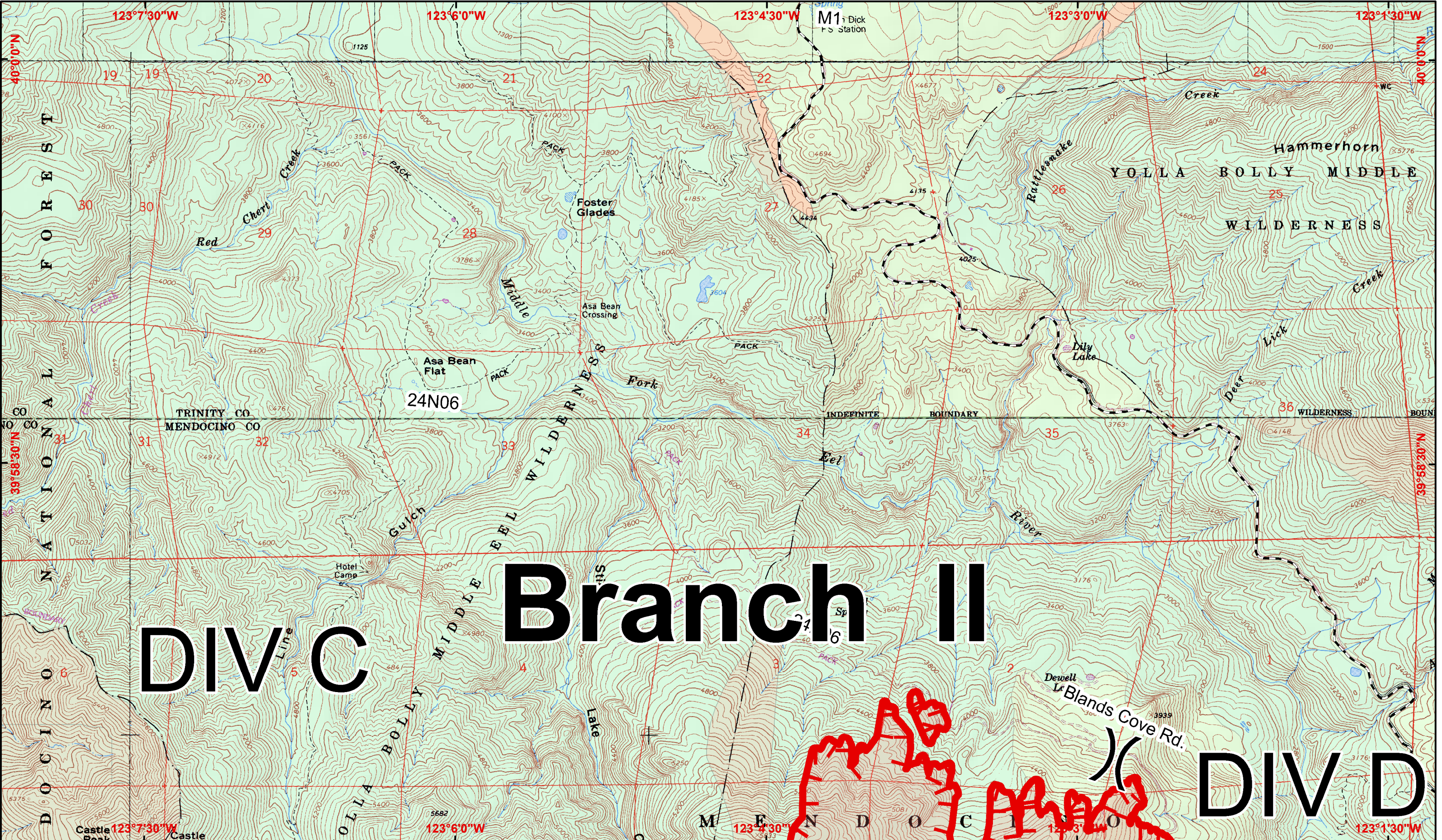


- Completed Line
- Completed Dozer Line
- Uncontrolled Fire Edge
- Helispot
- MediVac
- First Aid Station

- Division
- Branch
- Drop Point
- Safety Zone





IAP Map August 29, 2012
 Page 1 0700-1900
 NAD 83, UTM Zone 10

North Pass Fire
CA-MNF-1446
CA-MEU-5763

- Completed Line
- Completed Dozer Line
- Uncontrolled Fire Edge
- Contingency Line
- High Value Timber Sale

- Division
- Branch
- Drop Point
- Safety Zone
- Water Source
- First Aid Station
- MediVac Site

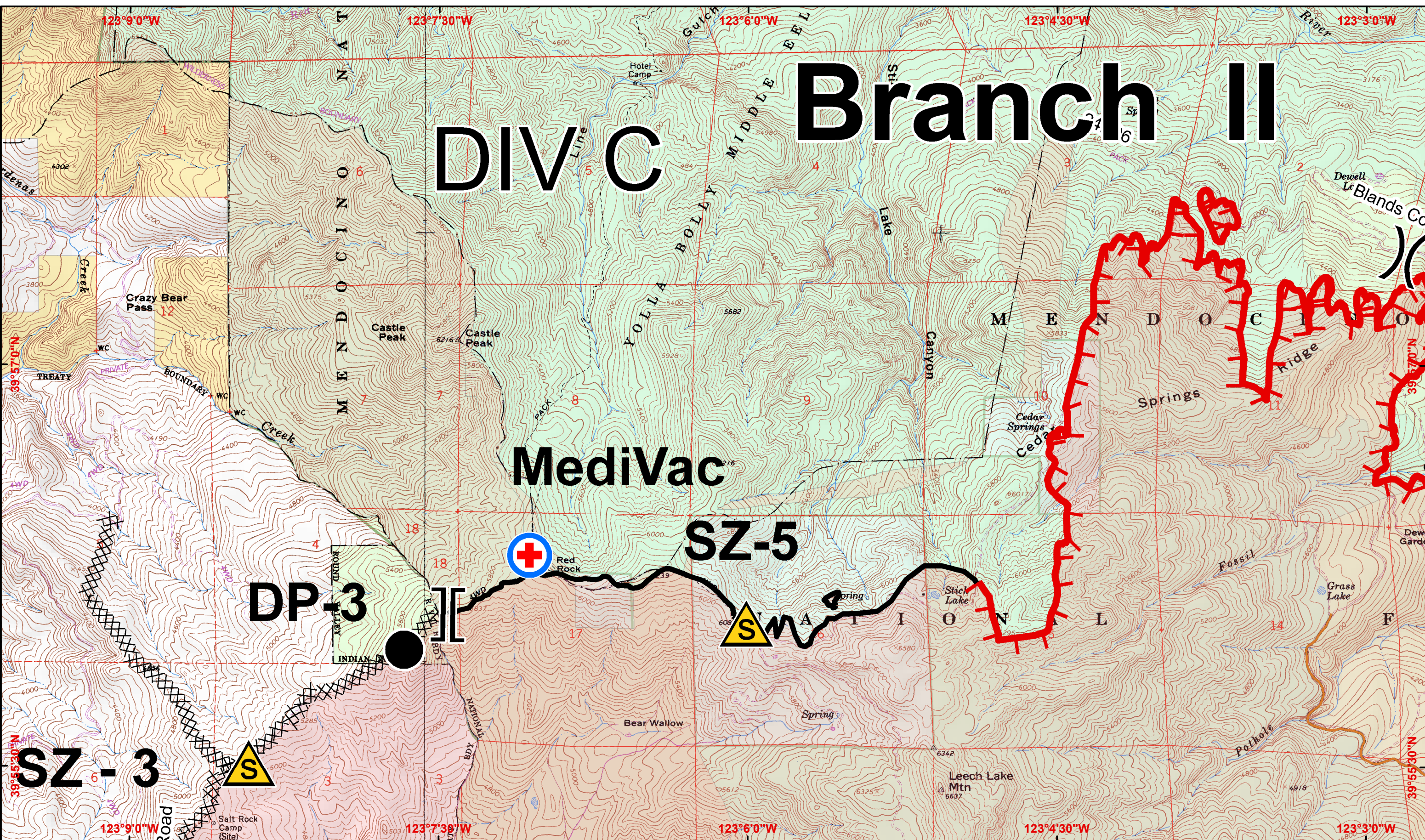
- United States Bureau of Land Management
- US Forest Service
- Bureau of Indian Affairs
- Wilderness Areas



1:24,000
 CONTOUR INTERVAL 40 FEET



DIV C Branch II



IAP Map August 29, 2012
 Page 2 0700-1900
 NAD 83, UTM Zone 10

North Pass Fire
CA-MNF-1446
CA-MEU-5763

- Completed Line
- Completed Dozer Line
- Uncontrolled Fire Edge
- Contingency Line
- High Value Timber Sale

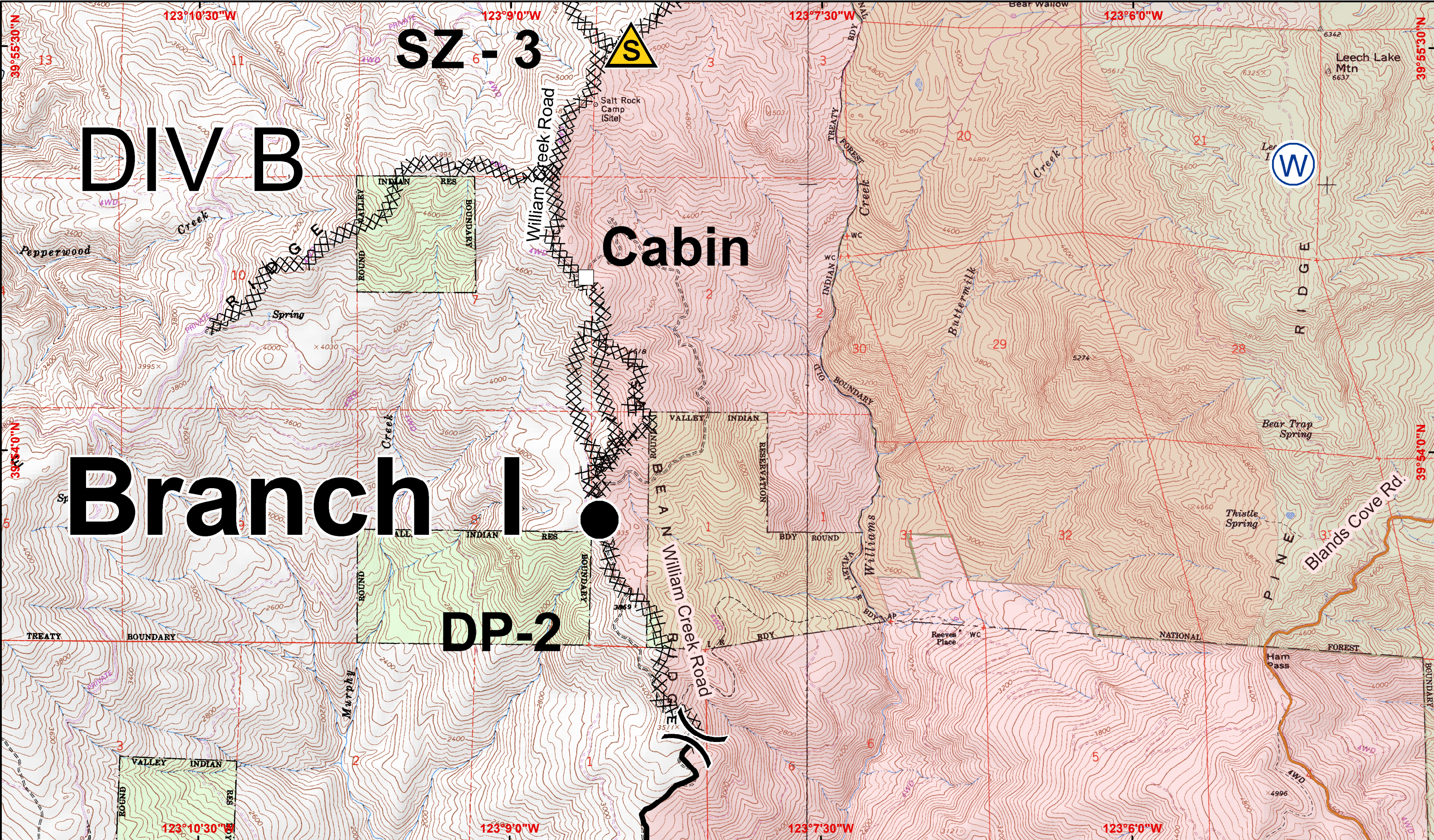
- Division
- Branch
- Drop Point
- Safety Zone
- Water Source
- First Aid Station

- MediVac Site
- United States Bureau of Land Management
- US Forest Service
- Bureau of Indian Affairs
- Wilderness Areas



1:24,000
 CONTOUR INTERVAL 40 FEET





IAP Map August 29, 2012
 Page 3 0700-1900
 NAD 83, UTM Zone 10

North Pass Fire
CA-MNF-1446
CA-MEU-5763

- Completed Line
- Completed Dozer Line
- Uncontrolled Fire Edge
- Contingency Line
- High Value Timber Sale

- Division
- Branch
- Drop Point
- Safety Zone
- Water Source
- First Aid Station
- MediVac Site

Miles
 1 0.5 0 1
 United States Bureau of Land Management
 US Forest Service
 Bureau of Indian Affairs
 Wilderness Areas
 1:24,000
 CONTOUR INTERVAL 40 FEET



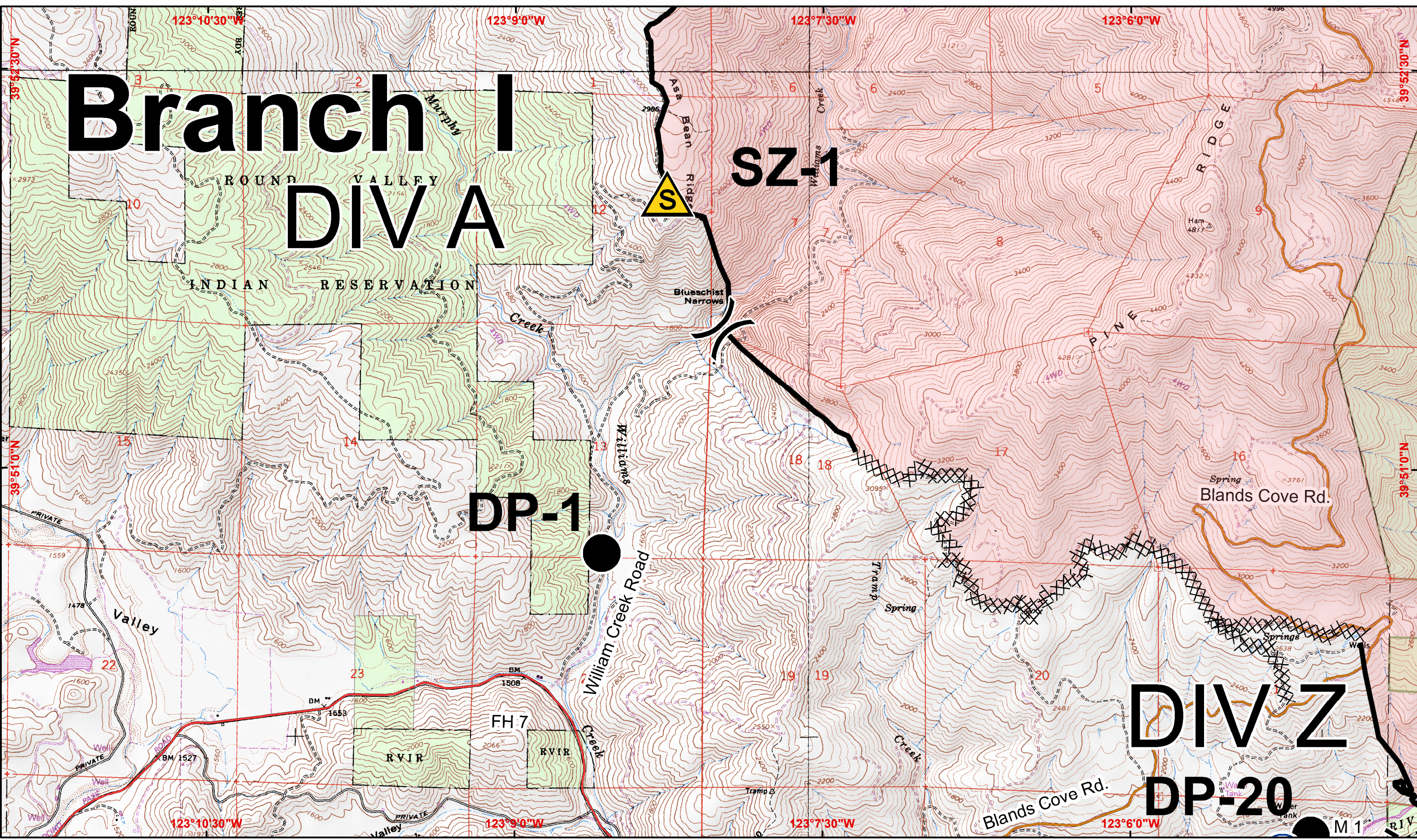
Branch I DIVA

SZ-1

DP-1

DIVZ

DP-20



IAP Map August 29, 2012
Page 4 0700-1900
NAD 83, UTM Zone 10

North Pass Fire
CA-MNF-1446
CA-MEU-5763

- Completed Line
- Completed Dozer Line
- Uncontrolled Fire Edge
- Contingency Line
- High Value Timber Sale

- Division
- Branch
- Drop Point
- Safety Zone
- Water Source
- First Aid Station

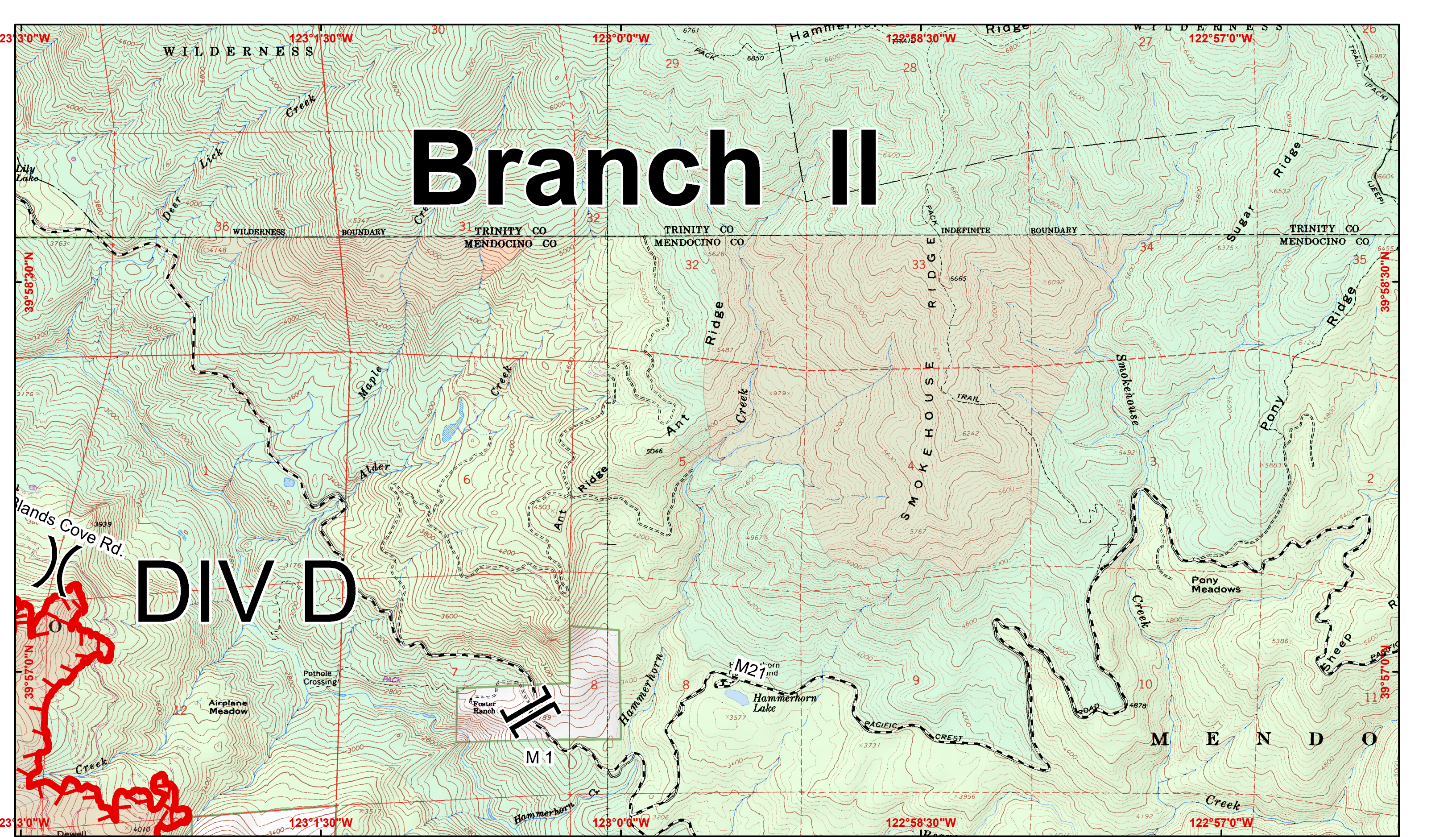
- MediVac Site
- United States Bureau of Land Management
- US Forest Service
- Bureau of Indian Affairs

- Wilderness Areas
- 1:24,000
CONTOUR INTERVAL 40 FEET



Branch II

DIV D



IAP Map August 29, 2012
 Page 5 0700-1900
 NAD 83, UTM Zone 10

North Pass Fire
CA-MNF-1446
CA-MEU-5763

- Completed Line
- Completed Dozer Line
- Uncontrolled Fire Edge
- Contingency Line
- High Value Timber Sale

- Division
- Branch
- Drop Point
- Safety Zone
- Water Source
- First Aid Station

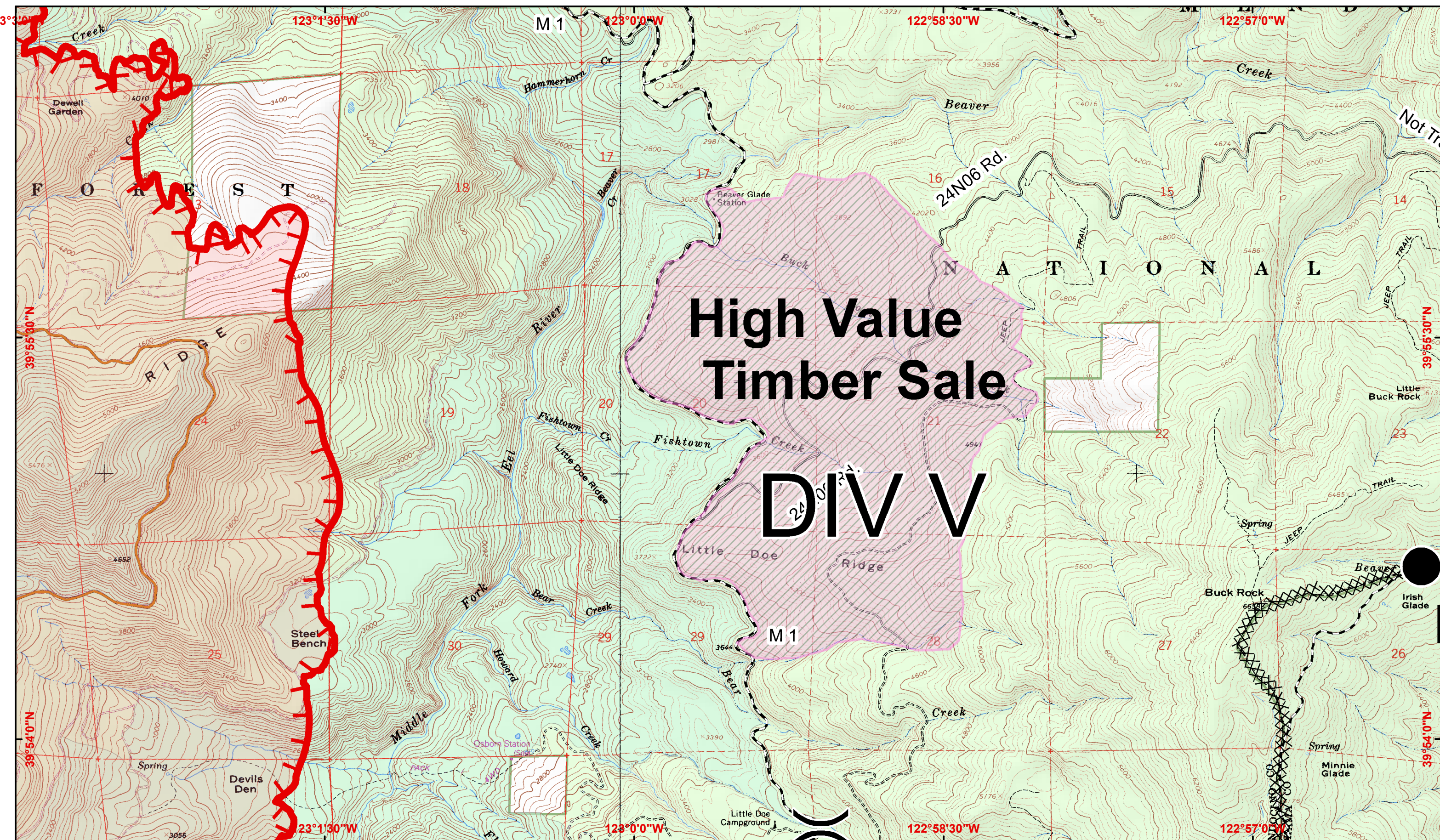
- MediVac Site
- United States Bureau of Land Management
- US Forest Service
- Bureau of Indian Affairs

Wilderness Areas



1:24,000
 CONTOUR INTERVAL 40 FEET





IAP Map August 29, 2012
 Page 6 0700-1900
 NAD 83, UTM Zone 10

North Pass Fire
CA-MNF-1446
CA-MEU-5763

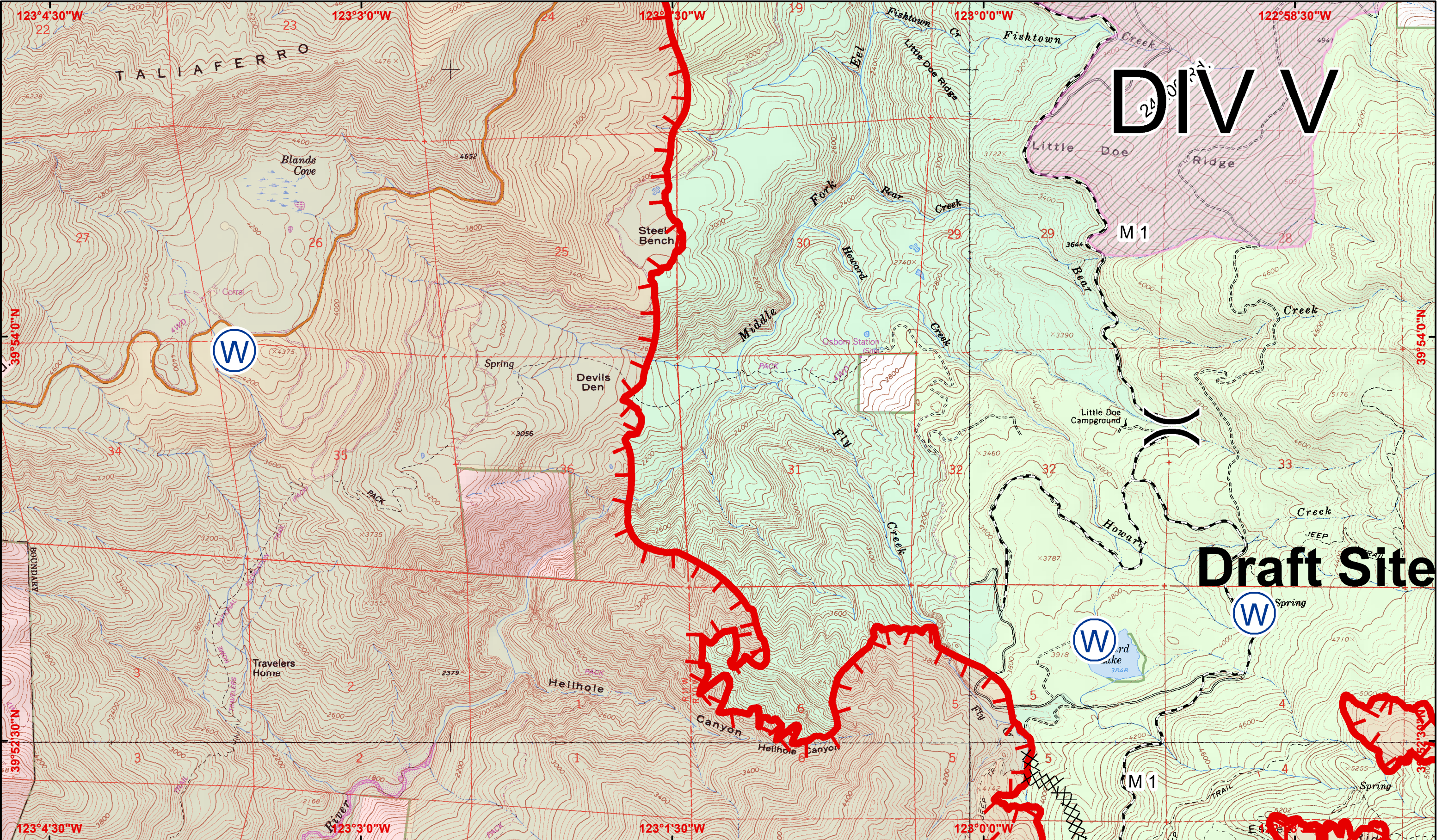
- Completed Line
- XXXXXX Completed Dozer Line
- Uncontrolled Fire Edge
- Contingency Line
- ▨ High Value Timber Sale

- () Division
- || Branch
- Drop Point
- ▲ Safety Zone
- W Water Source
- ⊕ First Aid Station
- ⊕ MediVac Site

- United States Bureau of Land Management
- US Forest Service
- Bureau of Indian Affairs
- Wilderness Areas

1 0.5 0 1 Miles
 1:24,000
 CONTOUR INTERVAL 40 FEET





IAP Map August 29, 2012
 Page 7 0700-1900
 NAD 83, UTM Zone 10

North Pass Fire
CA-MNF-1446
CA-MEU-5763

- Completed Line
- Completed Dozer Line
- Uncontrolled Fire Edge
- Contingency Line
- High Value Timber Sale

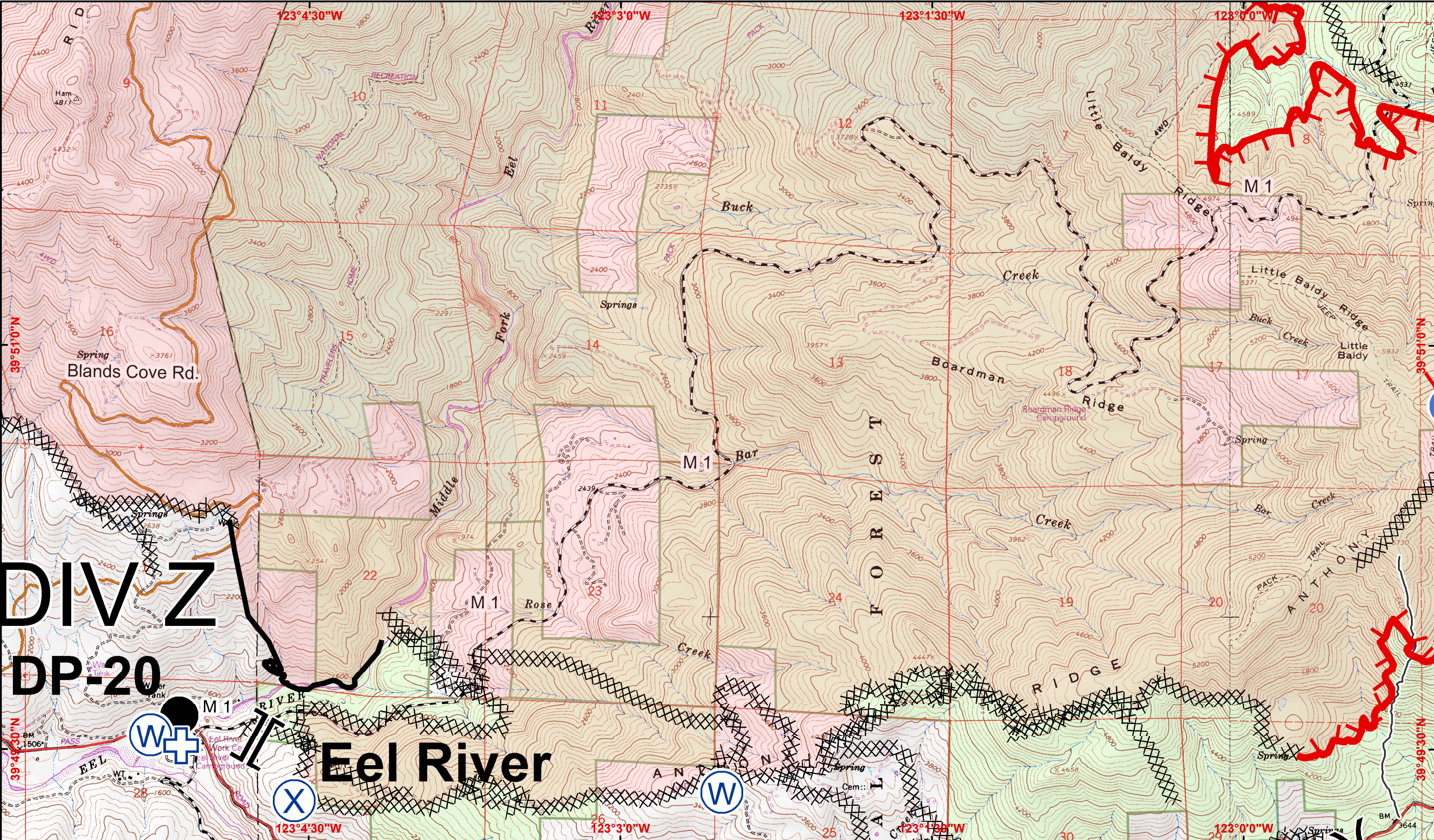
- Division
- Branch
- Drop Point
- Safety Zone
- Water Source
- First Aid Station
- MediVac Site



- United States Bureau of Land Management
- US Forest Service
- Bureau of Indian Affairs
- Wilderness Areas

1:24,000
 CONTOUR INTERVAL 40 FEET





DIVZ
DP-20

Eel River

IAP Map August 29, 2012
Page 8
0700-1900
NAD 83, UTM Zone 10

North Pass Fire
CA-MNF-1446
CA-MEU-5763

- Completed Line
- Completed Dozer Line
- Uncontrolled Fire Edge
- Contingency Line
- High Value Timber Sale

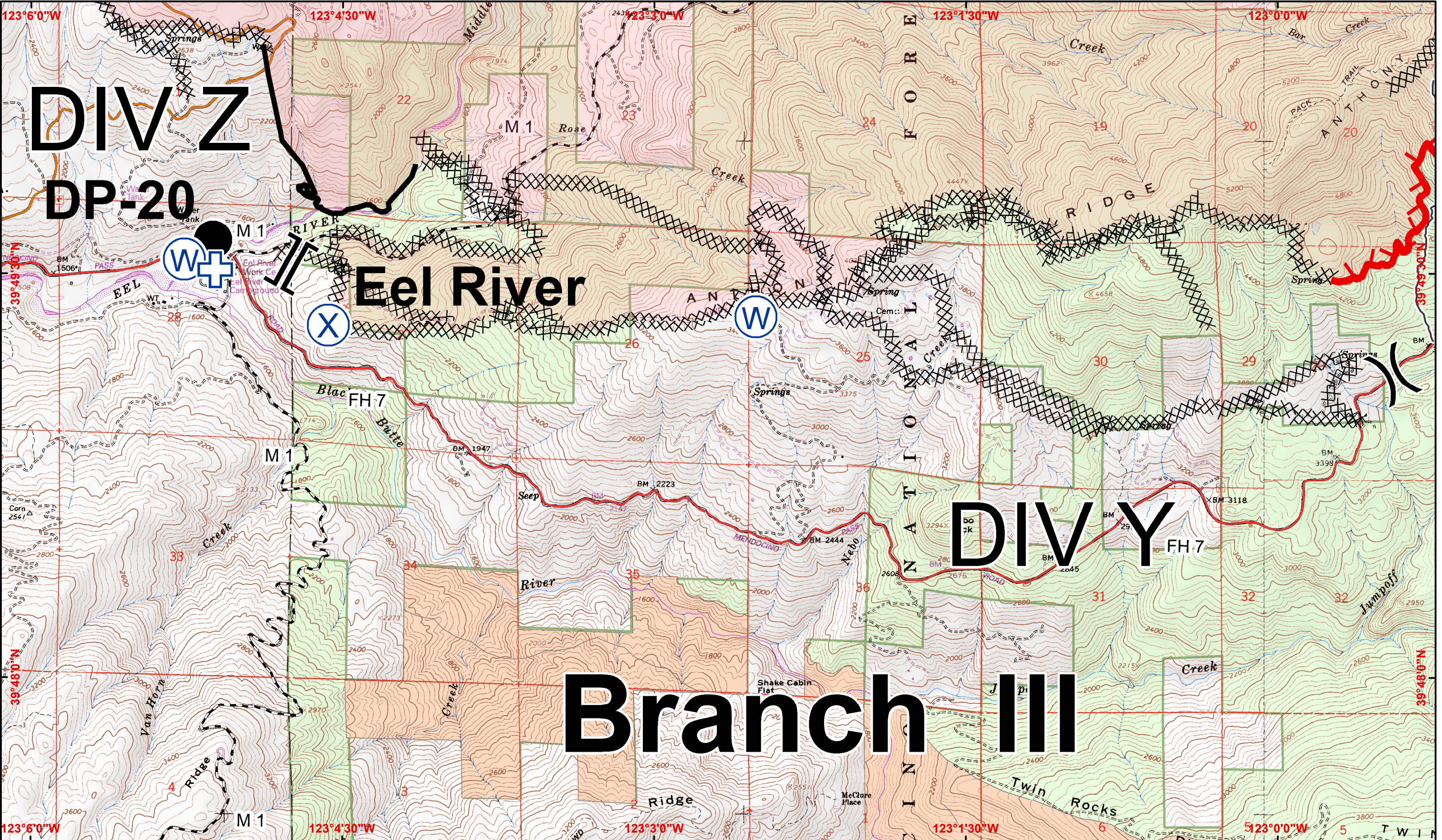
- Division
- Branch
- Drop Point
- Safety Zone
- Water Source
- First Aid Station

- MediVac Site
- United States Bureau of Land Management
- US Forest Service
- Bureau of Indian Affairs
- Wilderness Areas



1:24,000
CONTOUR INTERVAL 40 FEET





DIV Z
DP-20

Eel River

DIV Y

Branch III

IAP Map August 29, 2012
Page 9
0700-1900
NAD 83, UTM Zone 10

North Pass Fire
CA-MNF-1446
CA-MEU-5763

- Completed Line
- Completed Dozer Line
- Uncontrolled Fire Edge
- Contingency Line
- High Value Timber Sale

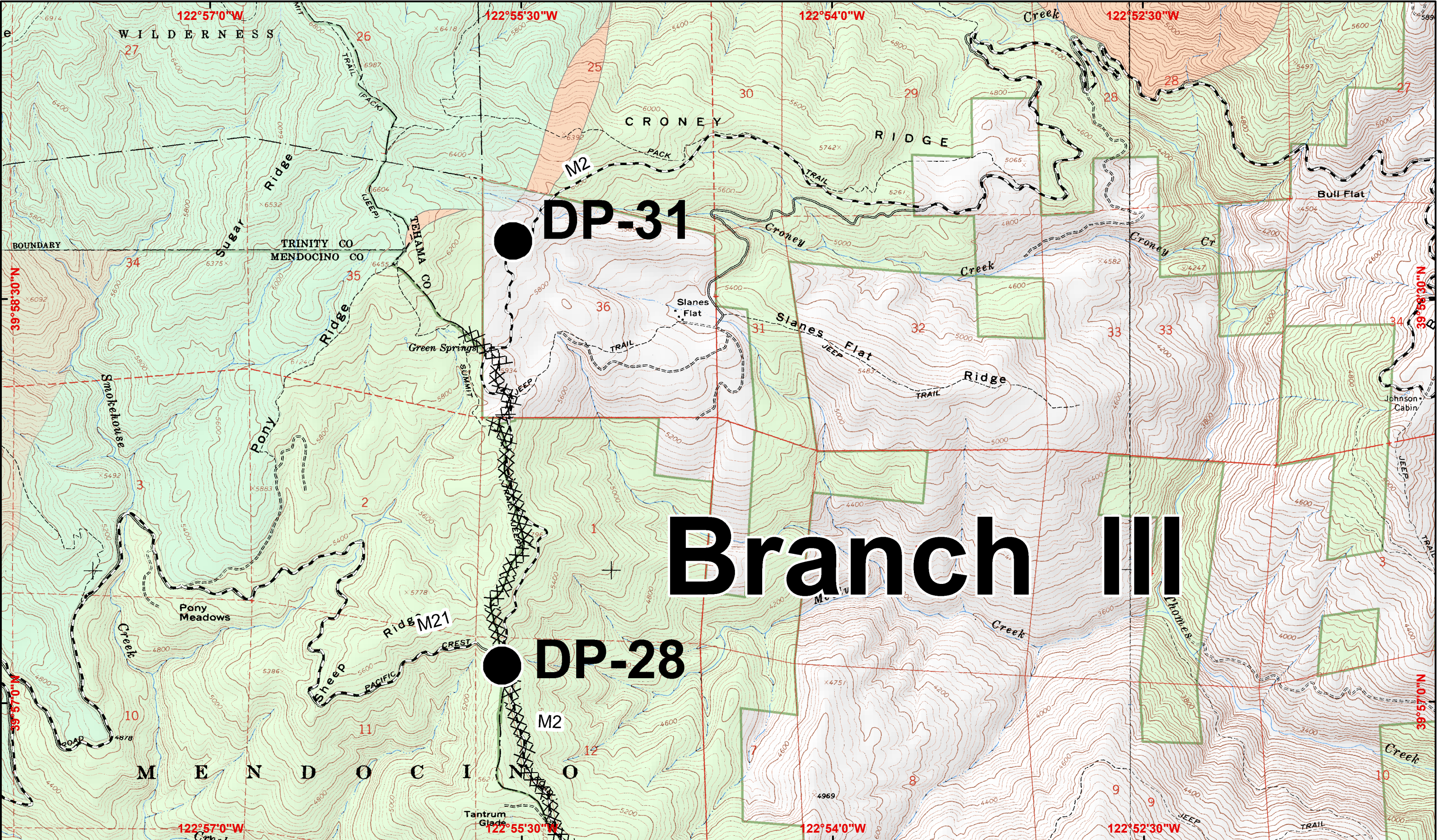
- Division
- Branch
- Drop Point
- Safety Zone
- Water Source
- First Aid Station
- MediVac Site

- United States Bureau of Land Management
- US Forest Service
- Bureau of Indian Affairs
- Wilderness Areas



1:24,000
CONTOUR INTERVAL 40 FEET





DP-31

DP-28

Branch III

IAP Map August 29, 2012
 Page 10 0700-1900
 NAD 83, UTM Zone 10

North Pass Fire
CA-MNF-1446
CA-MEU-5763

- Completed Line
- Completed Dozer Line
- Uncontrolled Fire Edge
- Contingency Line
- High Value Timber Sale

- Division
- Branch
- Drop Point
- Safety Zone
- Water Source
- First Aid Station

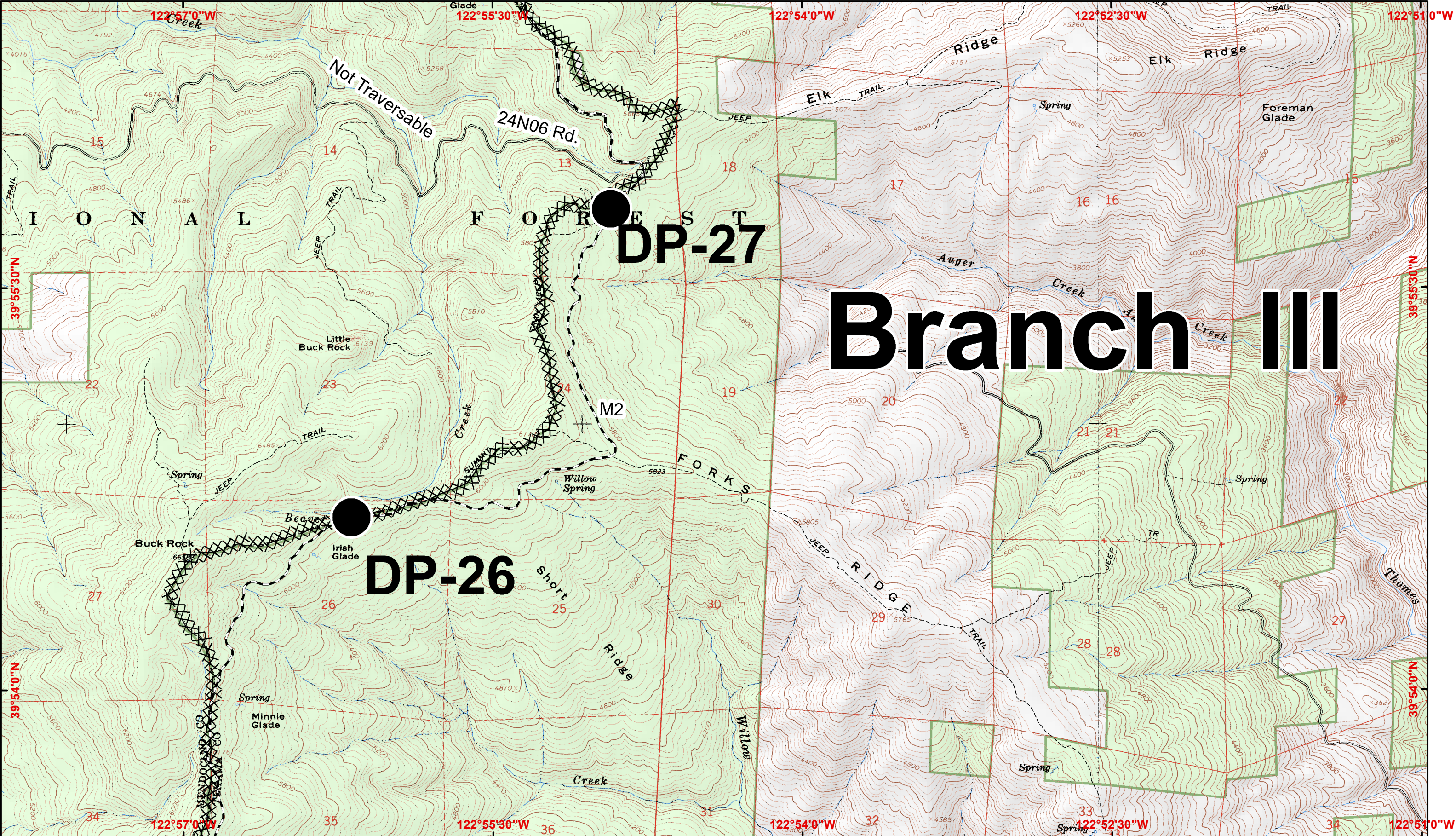
- MediVac Site
- United States Bureau of Land Management
- US Forest Service
- Bureau of Indian Affairs

Wilderness Areas



1:24,000
 CONTOUR INTERVAL 40 FEET





Branch III

IAP Map August 29, 2012
 Page 11 0700-1900
 NAD 83, UTM Zone 10

North Pass Fire
CA-MNF-1446
CA-MEU-5763

- Completed Line
- Completed Dozer Line
- Uncontrolled Fire Edge
- Contingency Line
- High Value Timber Sale

- Division
- Branch
- Drop Point
- Safety Zone
- Water Source
- First Aid Station

- MediVac Site
- United States Bureau of Land Management
- US Forest Service
- Bureau of Indian Affairs
- Wilderness Areas



1:24,000
 CONTOUR INTERVAL 40 FEET



Draft Site

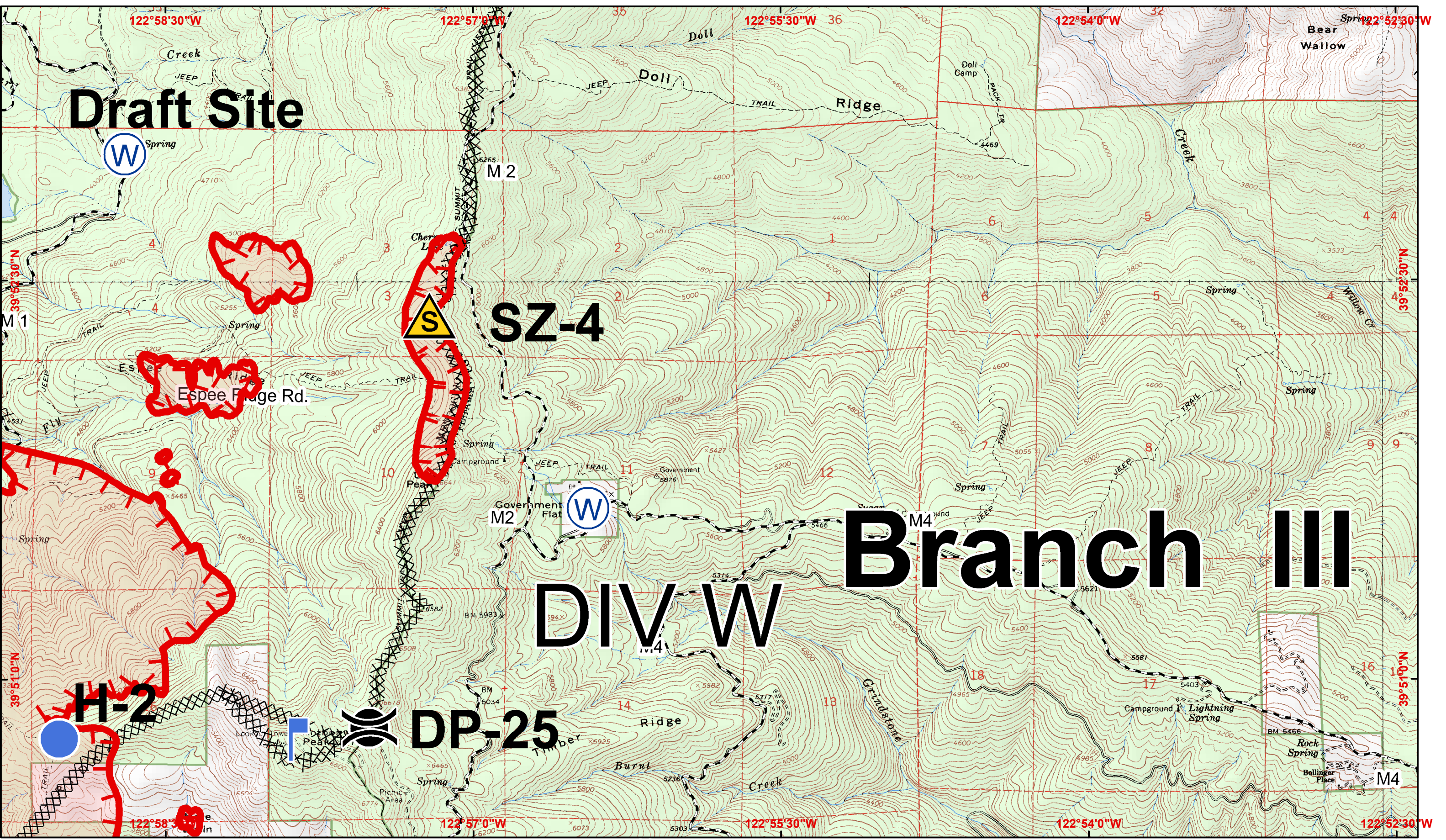
SZ-4

Branch III

DIV W

H-2

DP-25



IAP Map August 29, 2012
Page 12 0700-1900
NAD 83, UTM Zone 10

North Pass Fire
CA-MNF-1446
CA-MEU-5763

- Completed Line
- Completed Dozer Line
- Uncontrolled Fire Edge
- Contingency Line
- High Value Timber Sale

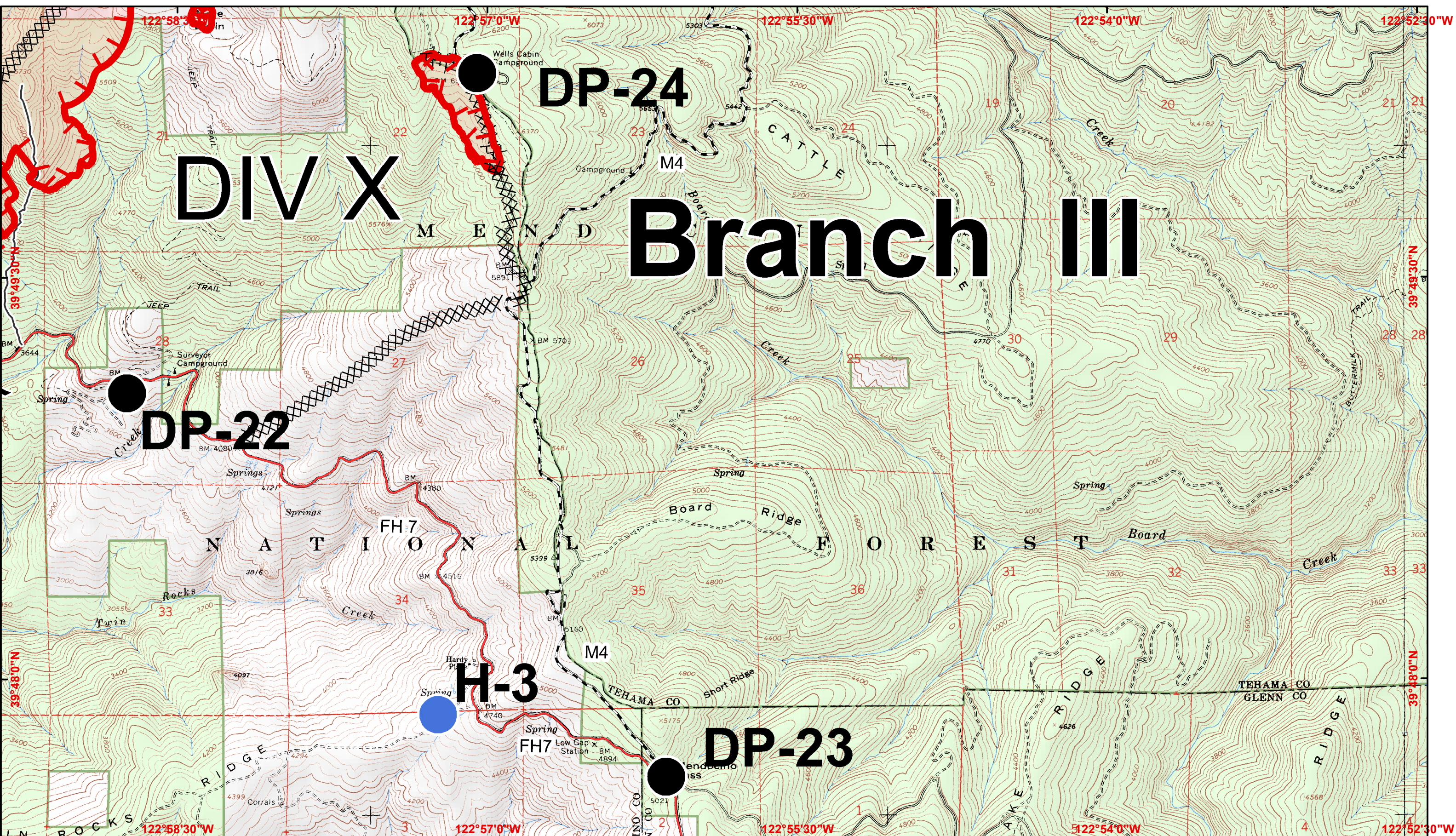
- Division
- Branch
- Drop Point
- Safety Zone
- Water Source
- First Aid Station
- MediVac Site

Scale: 1 0.5 0 1 Miles

Legend: United States Bureau of Land Management, Wilderness Areas, US Forest Service, Bureau of Indian Affairs

CONTOUR INTERVAL 40 FEET





- Completed Line
- XXXXXX Completed Dozer Line
- Uncontrolled Fire Edge
- Contingency Line
- High Value Timber Sale

- () Division
- || Branch
- Drop Point
- ▲ Safety Zone
- W Water Source
- ⊕ First Aid Station
- ⊕ MediVac Site

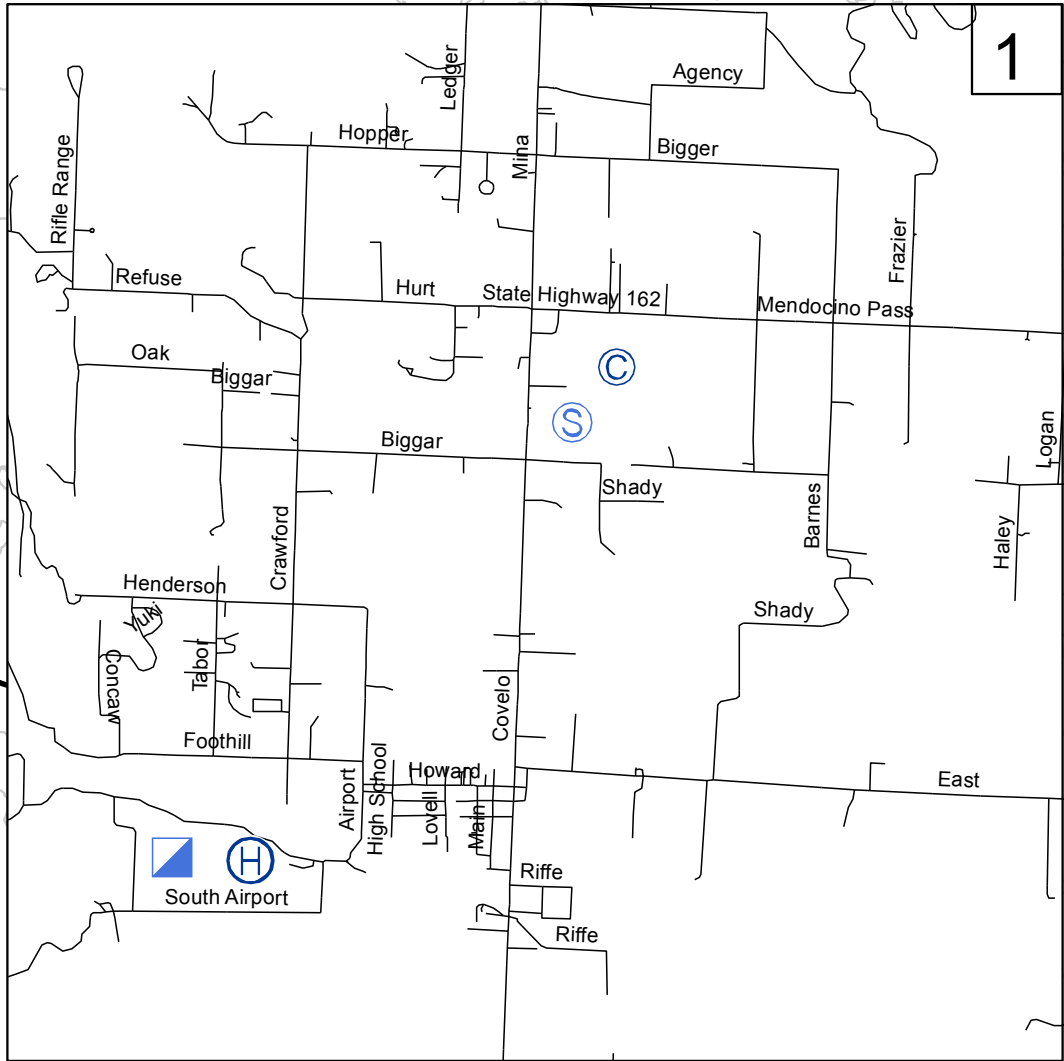
1 0.5 0 1 Miles

United States Bureau of Land Management
 US Forest Service
 Bureau of Indian Affairs
 Wilderness Areas

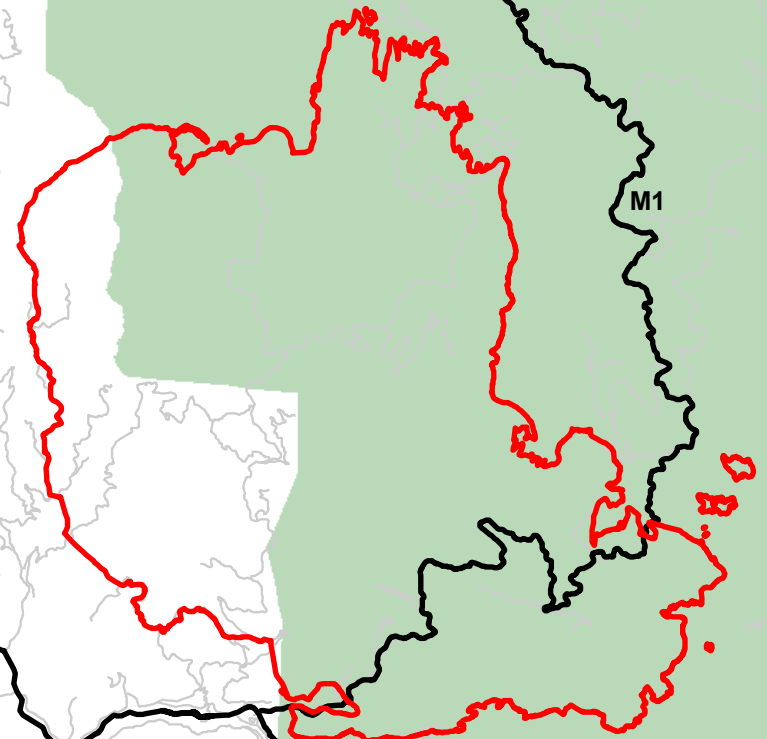
1:24,000
 CONTOUR INTERVAL 40 FEET



North Pass Fire Travel Map



See Details at Left 1



Mendocino Pass Rd

Spike Camp

**From Willits to the North Pass Fire:
Go North on Highway 101 to Highway 162.
Travel east on Highway 162, through Covelo,
to Mendocino Pass Road (aka Highway 162).
Travel approximatley 10 miles to the North Pass fire.**

August 29, 2012
CA-MNF-1446
CA-MEU-5763

Legend

- Camp
- Incident Command Post
- Staging Area
- Helibase