

IAP Map

Index Page

August 30, 2012
0700 - 1900
NAD 83, UTM Zone 10

North Pass Fire
CA-MNF-1446
CA-MEU-5763

- Completed Line
- Completed Dozer Line
- Uncontrolled Fire Edge
- Helispot
- MediVac
- First Aid Station

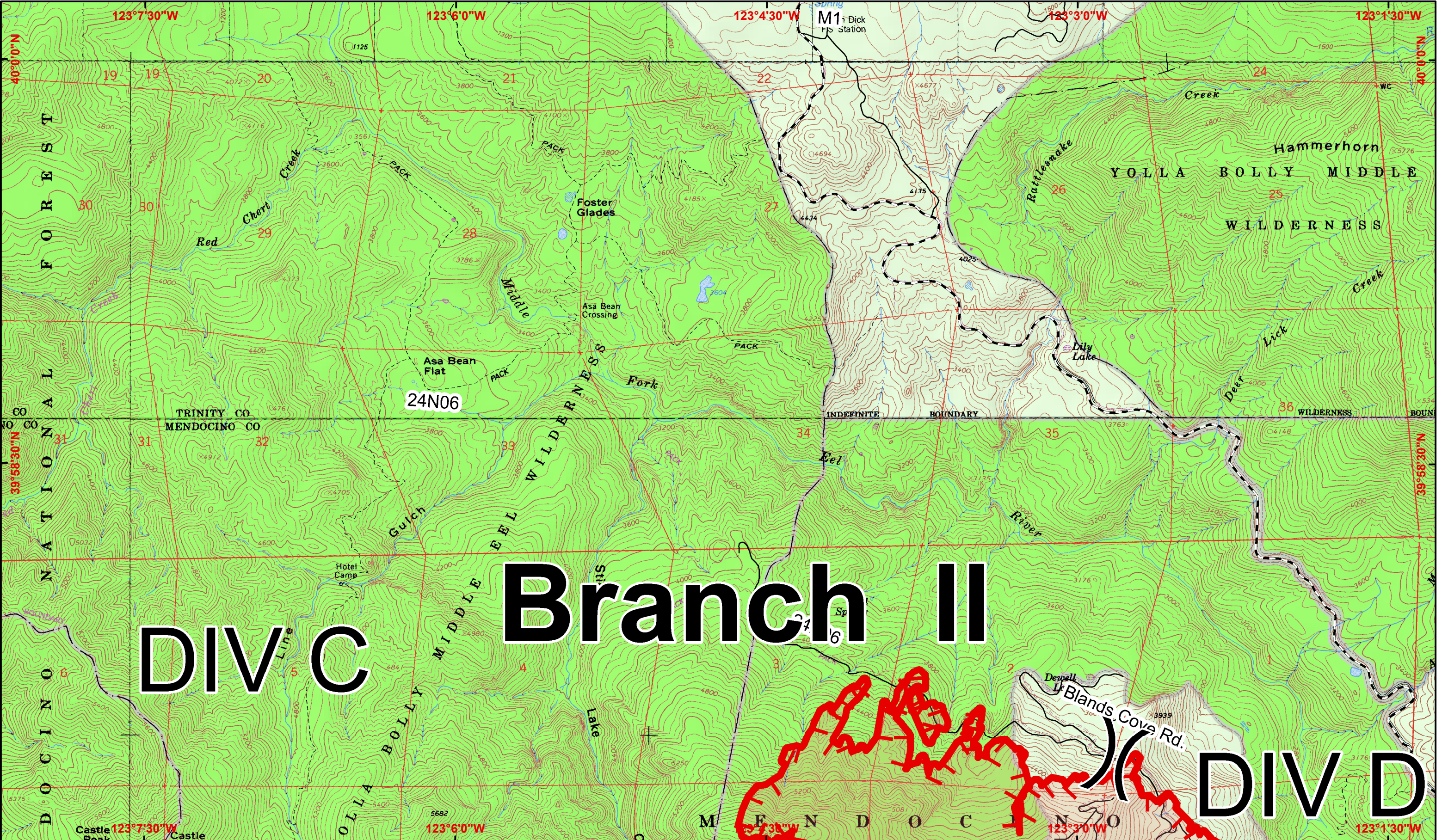
- Division
- Branch
- Drop Point
- Safety Zone

0 1 2 4 6 8 Miles

- Water Source
- RAWs Site
- Repeater Site
- Forest Road
- US, State, County Highways
- Major Roads

1:103,642



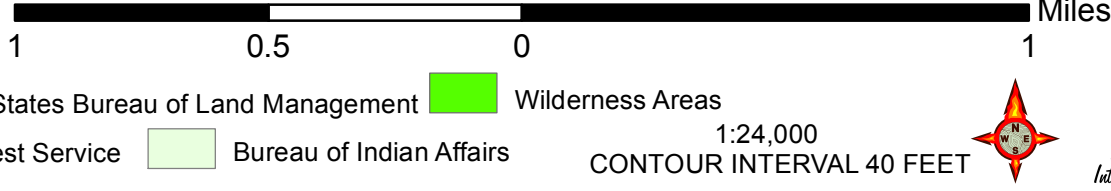


North Pass Fire
CA-MNF-1446
CA-MEU-5763

- Completed Line
- XXXXXX Completed Dozer Line
- Uncontrolled Fire Edge
- Contingency Line
- High Value Timber Sale

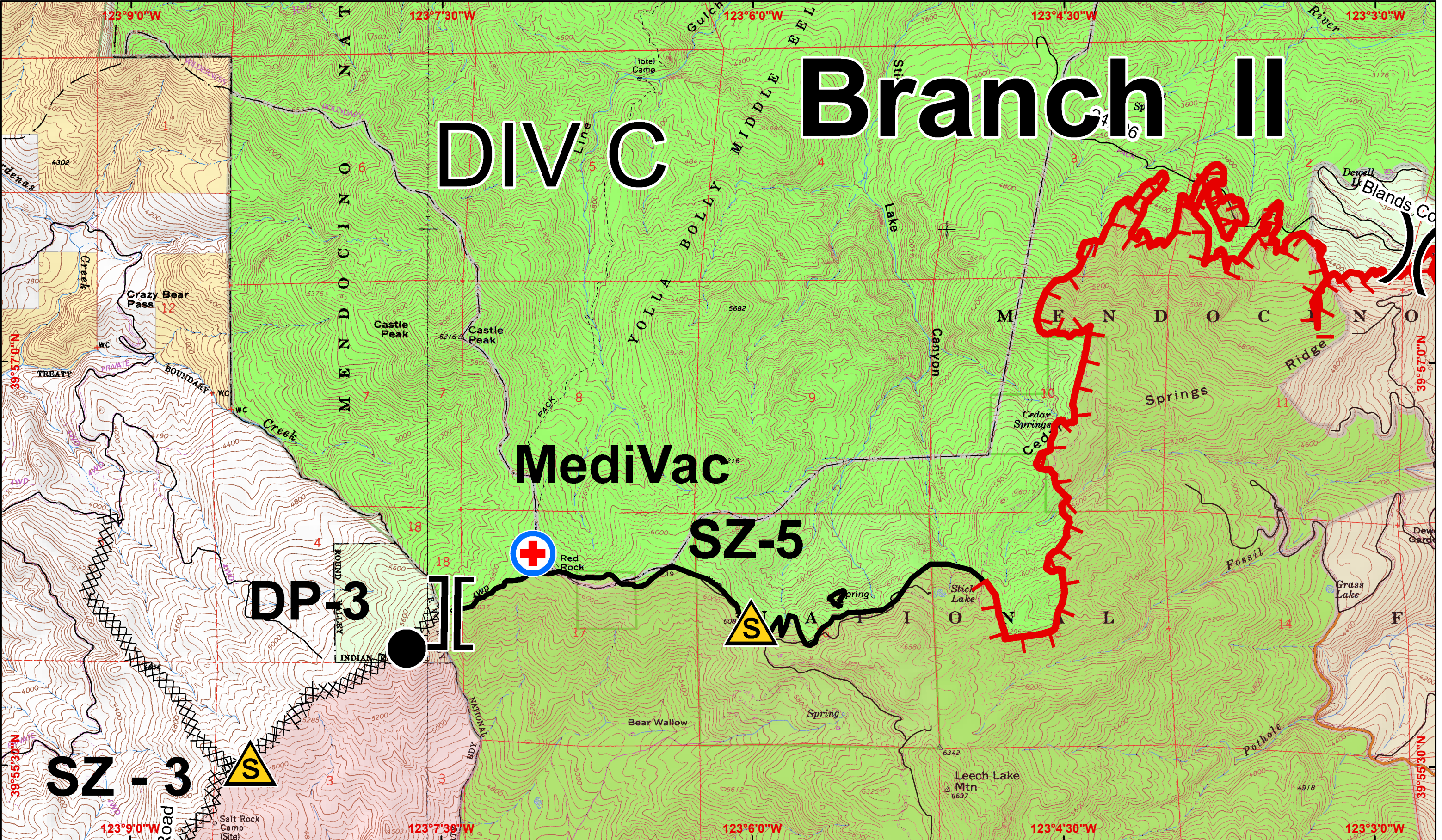
- () Division
- || Branch
- Drop Point
- ▲ Safety Zone
- W Water Source
- ⊕ First Aid Station
- ⊕ MediVac Site

- United States Bureau of Land Management
- US Forest Service
- Bureau of Indian Affairs
- Wilderness Areas



DIV C Branch II DIV D

DIV C Branch II



IAP Map August 30 2012
 Page 2 0700-1900
 NAD 83, UTM Zone 10

North Pass Fire
CA-MNF-1446
CA-MEU-5763

- Completed Line
- Completed Dozer Line
- Uncontrolled Fire Edge
- Contingency Line
- High Value Timber Sale

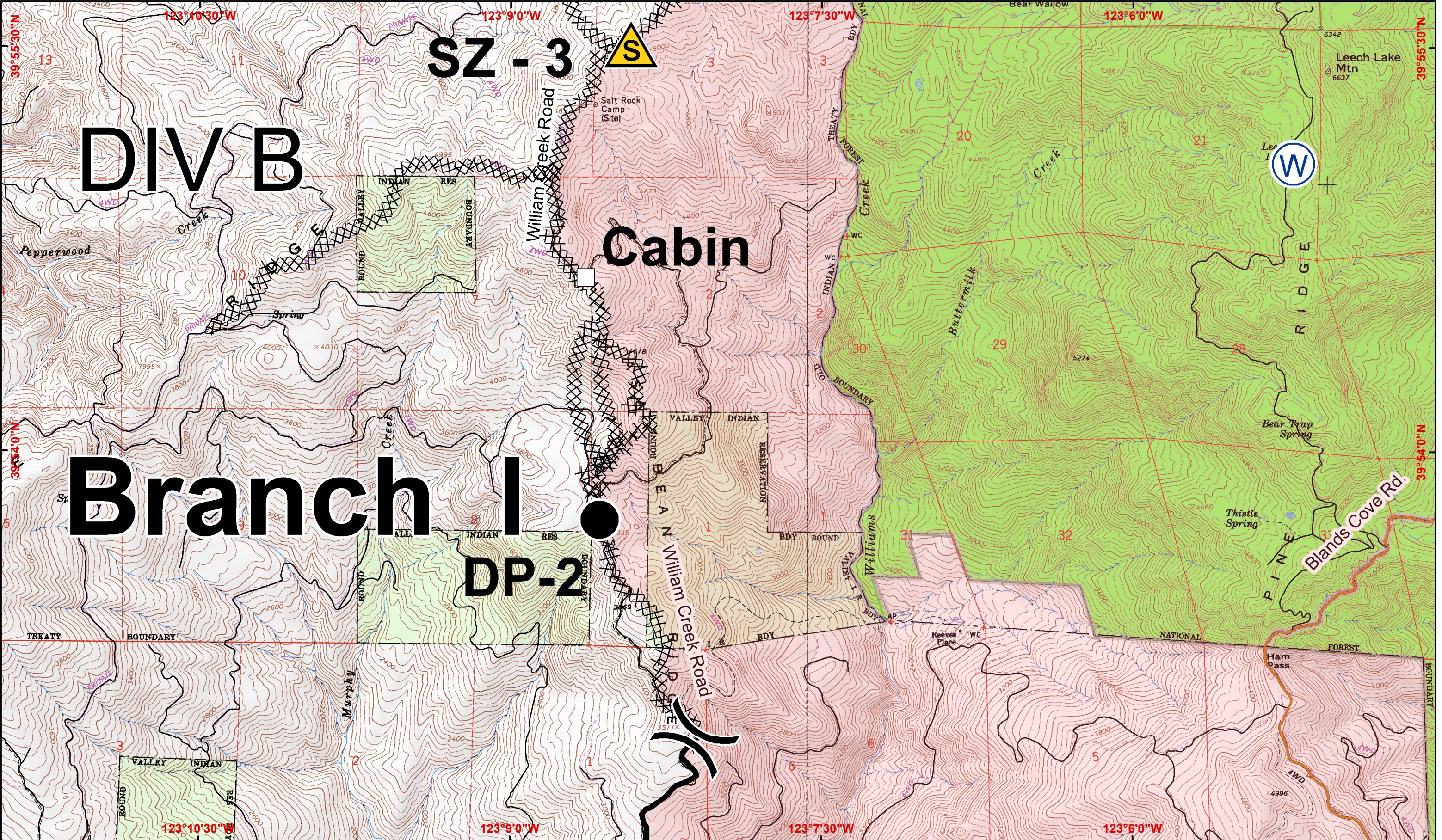
- Division
- Branch
- Drop Point
- Safety Zone
- Water Source
- First Aid Station

- MediVac Site
- United States Bureau of Land Management
- US Forest Service
- Bureau of Indian Affairs

Miles 1 0.5 0 1

1:24,000
 CONTOUR INTERVAL 40 FEET





DIV B

SZ - 3

Cabin

Branch I

DP-2

IAP Map August 30 2012
 Page 3 0700-1900
 NAD 83, UTM Zone 10

North Pass Fire
CA-MNF-1446
CA-MEU-5763

- Completed Line
- Completed Dozer Line
- Uncontrolled Fire Edge
- Contingency Line
- High Value Timber Sale

- Division
- Branch
- Drop Point
- Safety Zone
- Water Source
- First Aid Station

- United States Bureau of Land Management
- US Forest Service
- Bureau of Indian Affairs

- Wilderness Areas
- 1:24,000
 CONTOUR INTERVAL 40 FEET

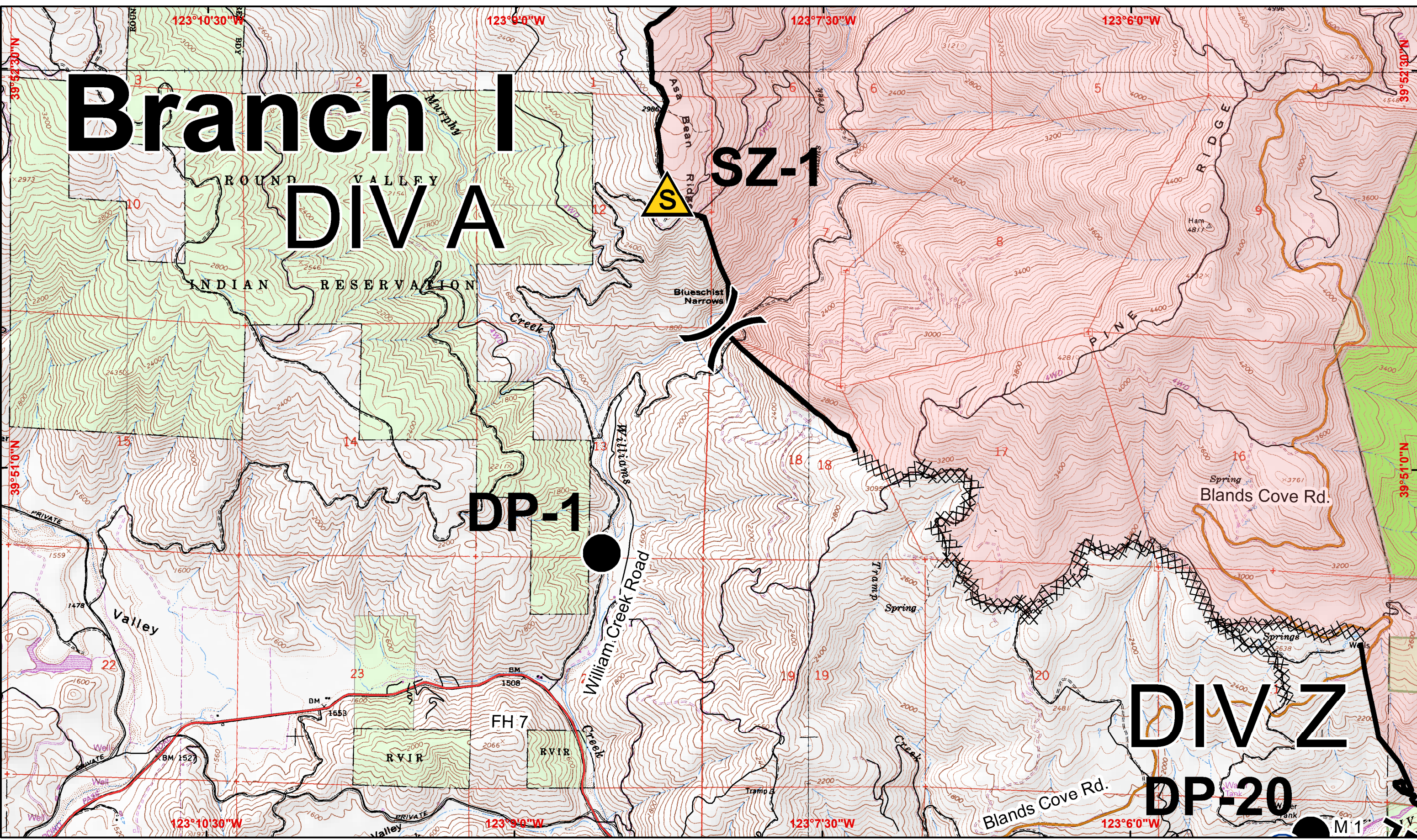


Branch I DIVA

SZ-1

DP-1

DIVZ
DP-20



IAP Map August 30 2012
Page 4 0700-1900
NAD 83, UTM Zone 10

North Pass Fire
CA-MNF-1446
CA-MEU-5763

- Completed Line
- Completed Dozer Line
- Uncontrolled Fire Edge
- Contingency Line
- High Value Timber Sale

- Division
- Branch
- Drop Point
- Safety Zone
- Water Source
- First Aid Station

- MediVac Site
- United States Bureau of Land Management
- US Forest Service
- Bureau of Indian Affairs

- Wilderness Areas
- 1:24,000
CONTOUR INTERVAL 40 FEET



Branch II

DIV D

IAP Map August 30 2012
 Page 5 0700-1900
 NAD 83, UTM Zone 10

North Pass Fire
CA-MNF-1446
CA-MEU-5763

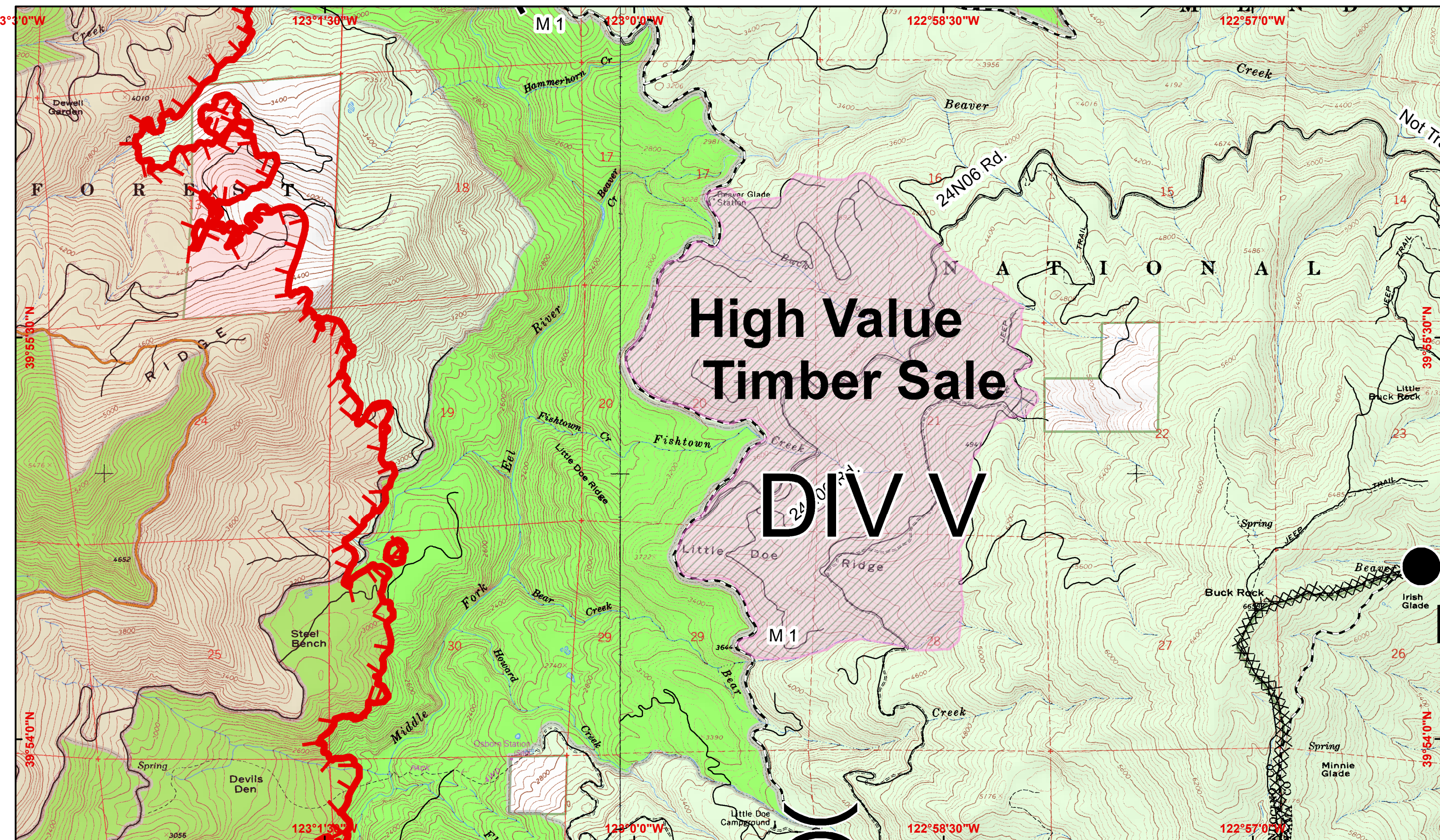
- Completed Line
- Completed Dozer Line
- Uncontrolled Fire Edge
- Contingency Line
- High Value Timber Sale

- Division
- Branch
- Drop Point
- Safety Zone
- Water Source
- First Aid Station

- MediVac Site
- United States Bureau of Land Management
- US Forest Service
- Bureau of Indian Affairs

Wilderness Areas
 1 0.5 0 1 Miles
 1:24,000
 CONTOUR INTERVAL 40 FEET





IAP Map August 30 2012
 Page 6 0700-1900
 NAD 83, UTM Zone 10

North Pass Fire
CA-MNF-1446
CA-MEU-5763

- Completed Line
- Completed Dozer Line
- Uncontrolled Fire Edge
- Contingency Line
- High Value Timber Sale

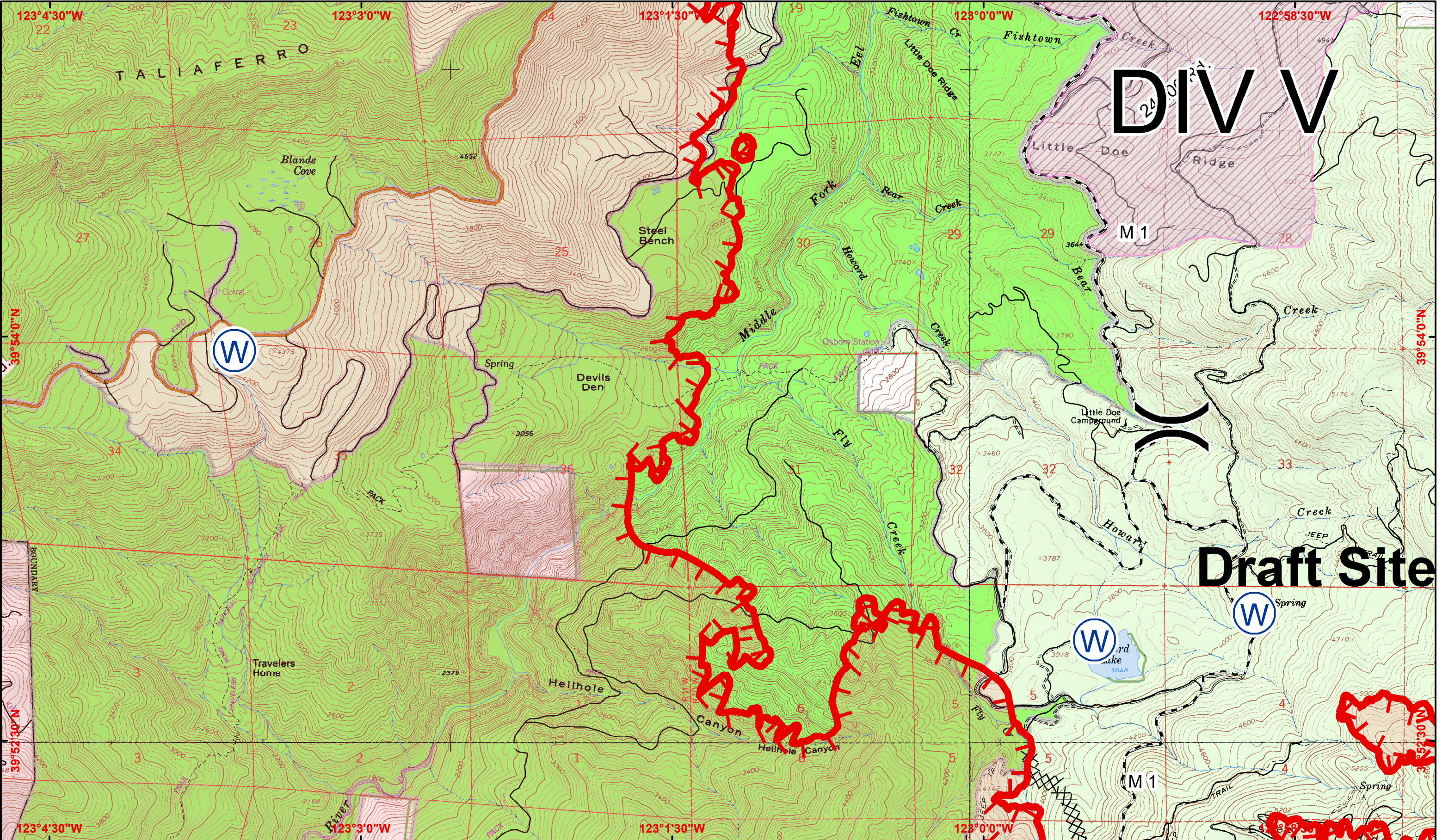
- Division
- Branch
- Drop Point
- Safety Zone
- Water Source
- First Aid Station
- MediVac Site

- United States Bureau of Land Management
- US Forest Service
- Bureau of Indian Affairs
- Wilderness Areas



1:24,000
 CONTOUR INTERVAL 40 FEET





IAP Map August 30 2012
 Page 7 0700-1900
 NAD 83, UTM Zone 10

North Pass Fire
CA-MNF-1446
CA-MEU-5763

- Completed Line
- Completed Dozer Line
- Uncontrolled Fire Edge
- Contingency Line
- High Value Timber Sale

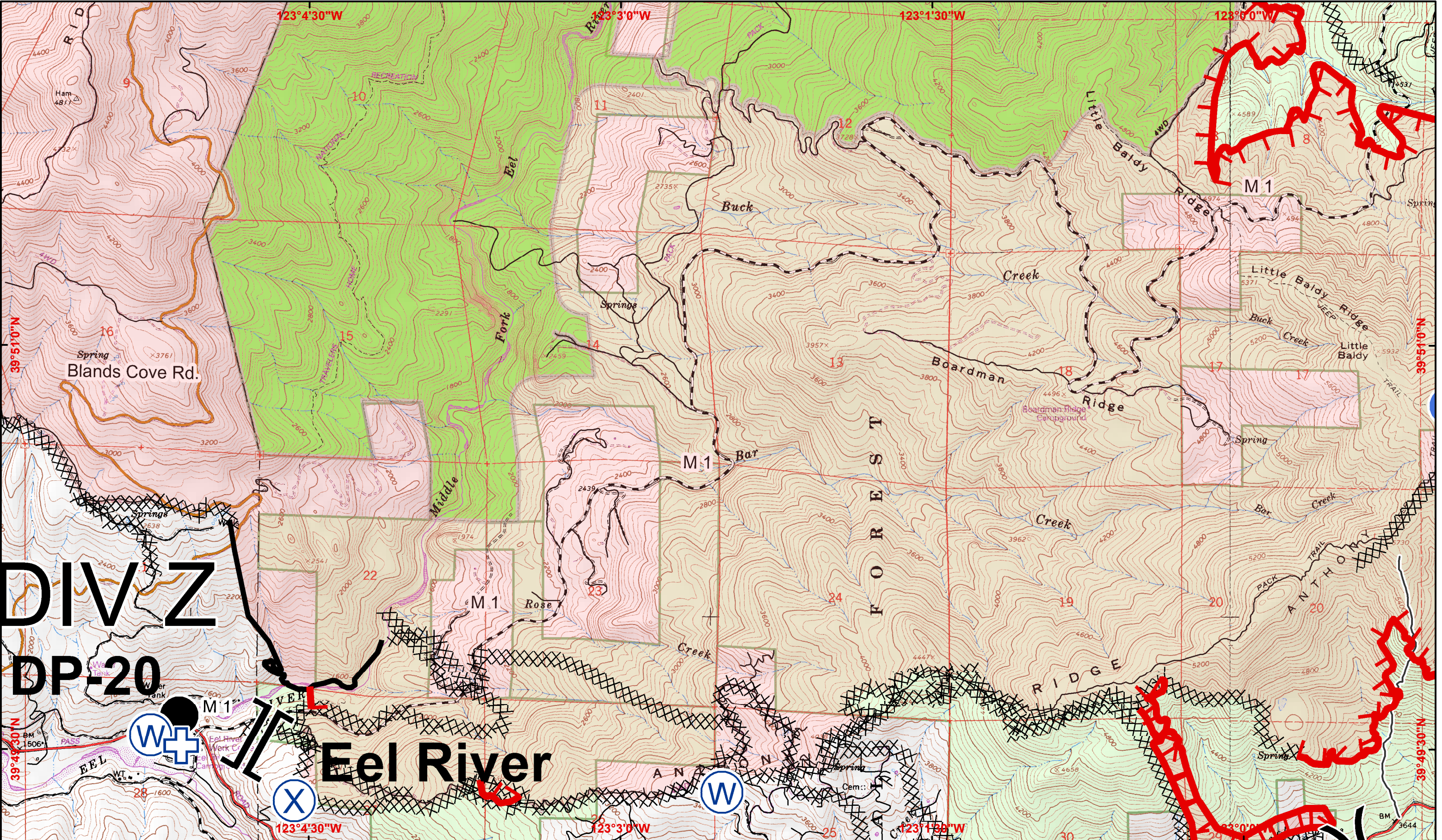
- Division
- Branch
- Drop Point
- Safety Zone
- Water Source
- First Aid Station
- MediVac Site

- United States Bureau of Land Management
- US Forest Service
- Bureau of Indian Affairs
- Wilderness Areas



1:24,000
 CONTOUR INTERVAL 40 FEET





DIV Z
DP-20

IAP Map August 30 2012
Page 8 0700-1900
NAD 83, UTM Zone 10

North Pass Fire
CA-MNF-1446
CA-MEU-5763

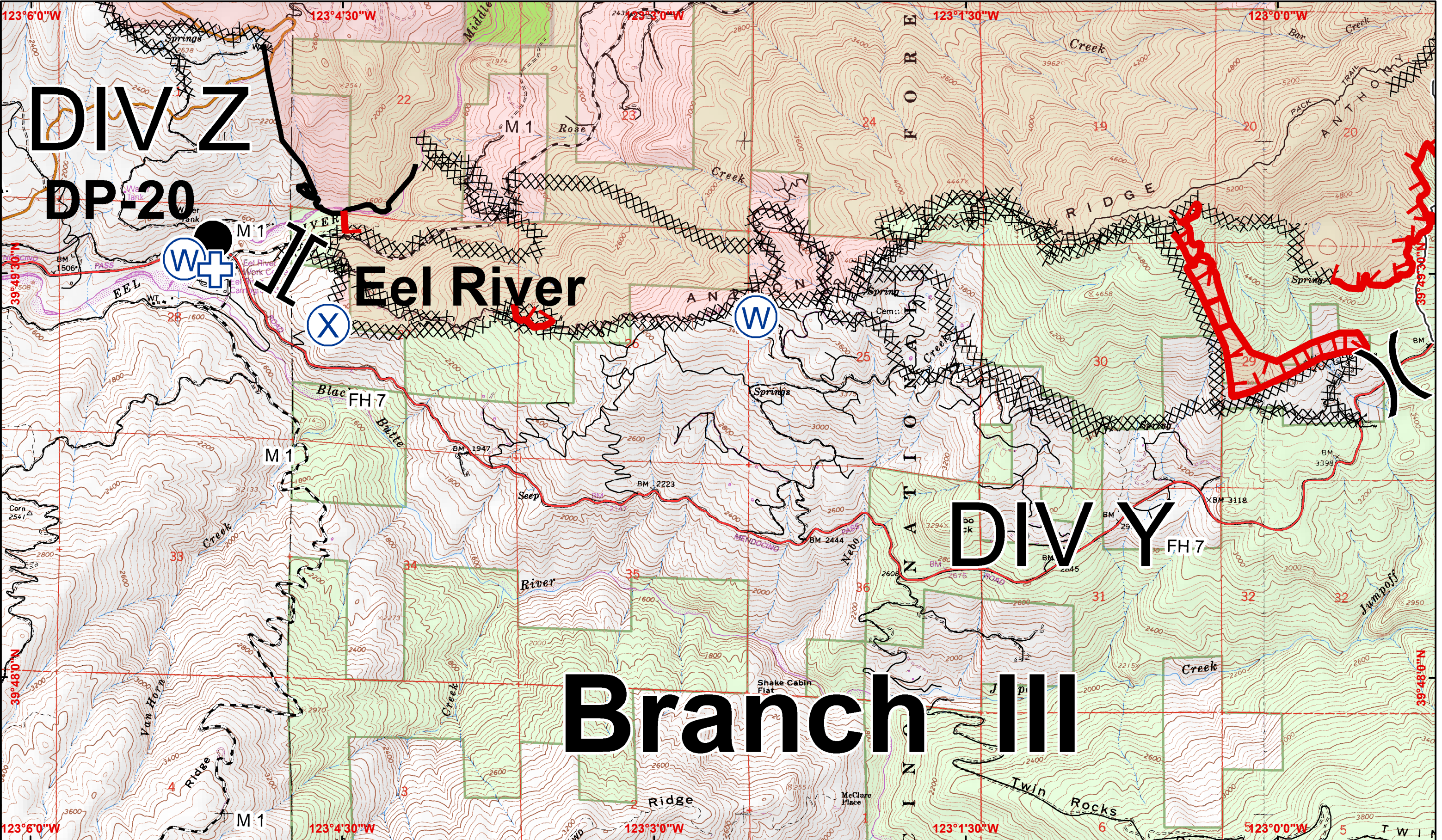
- Completed Line
- Completed Dozer Line
- Uncontrolled Fire Edge
- Contingency Line
- High Value Timber Sale
- Division
- Branch
- Drop Point
- Safety Zone
- Water Source
- First Aid Station
- MediVac Site

Miles 1 0.5 0 1

- United States Bureau of Land Management
- US Forest Service
- Bureau of Indian Affairs
- Wilderness Areas

1:24,000
CONTOUR INTERVAL 40 FEET





DIV Z
DP-20

Eel River

DIV Y

Branch III

IAP Map August 30 2012
Page 9
0700-1900
NAD 83, UTM Zone 10

North Pass Fire
CA-MNF-1446
CA-MEU-5763

- Completed Line
- Completed Dozer Line
- Uncontrolled Fire Edge
- Contingency Line
- High Value Timber Sale

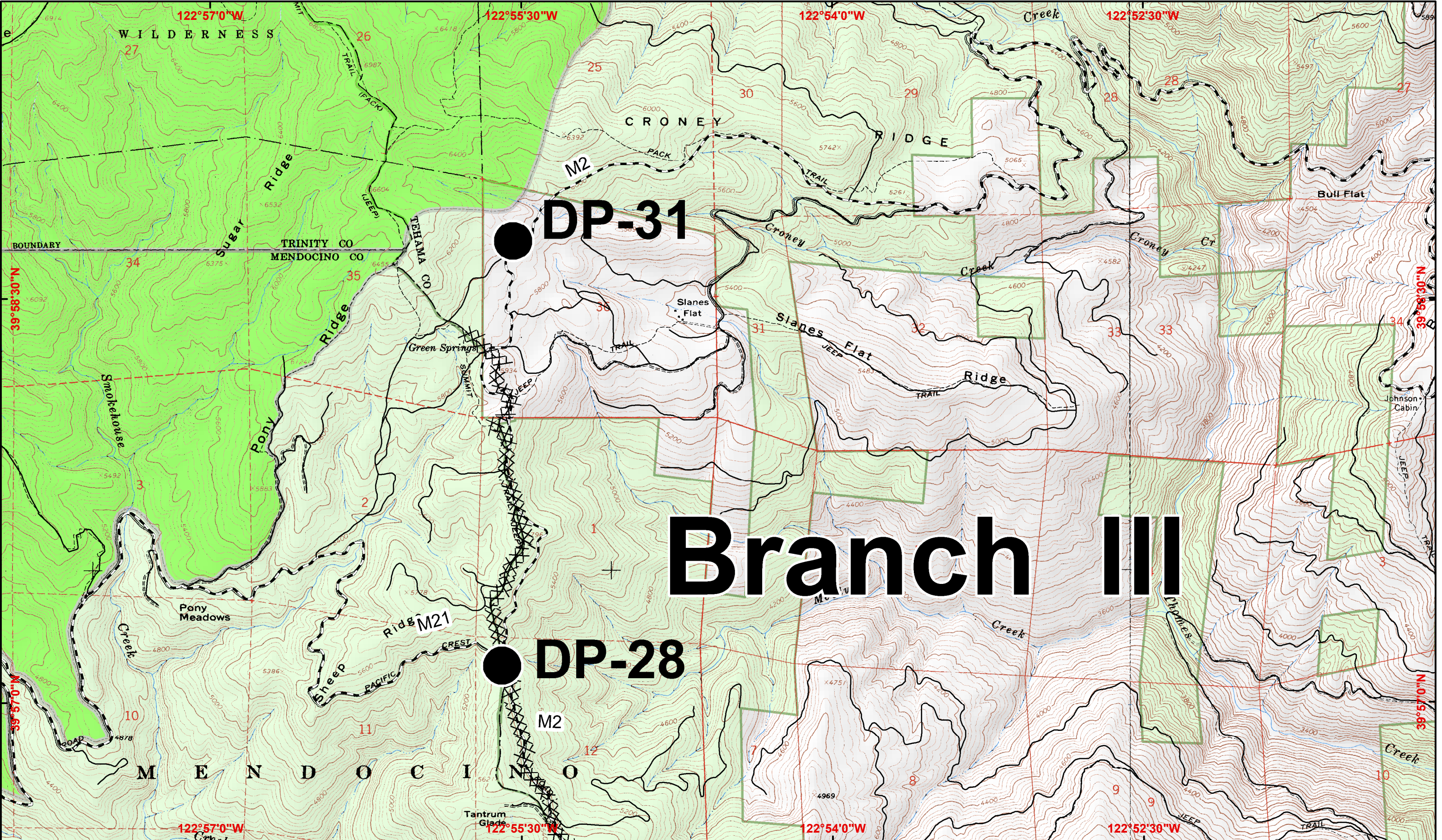
- Division
- Branch
- Drop Point
- Safety Zone
- Water Source
- First Aid Station
- MediVac Site

1 0.5 0 1 Miles

United States Bureau of Land Management
US Forest Service
Bureau of Indian Affairs
Wilderness Areas

1:24,000
CONTOUR INTERVAL 40 FEET





DP-31

Branch III

DP-28

IAP Map August 30 2012
 Page 10 0700-1900
 NAD 83, UTM Zone 10

North Pass Fire
CA-MNF-1446
CA-MEU-5763

- Completed Line
- XXXXXX Completed Dozer Line
- Uncontrolled Fire Edge
- Contingency Line
- ▨ High Value Timber Sale

- () Division
- || Branch
- Drop Point
- ▲ Safety Zone
- ⊕ Water Source
- ⊕ First Aid Station

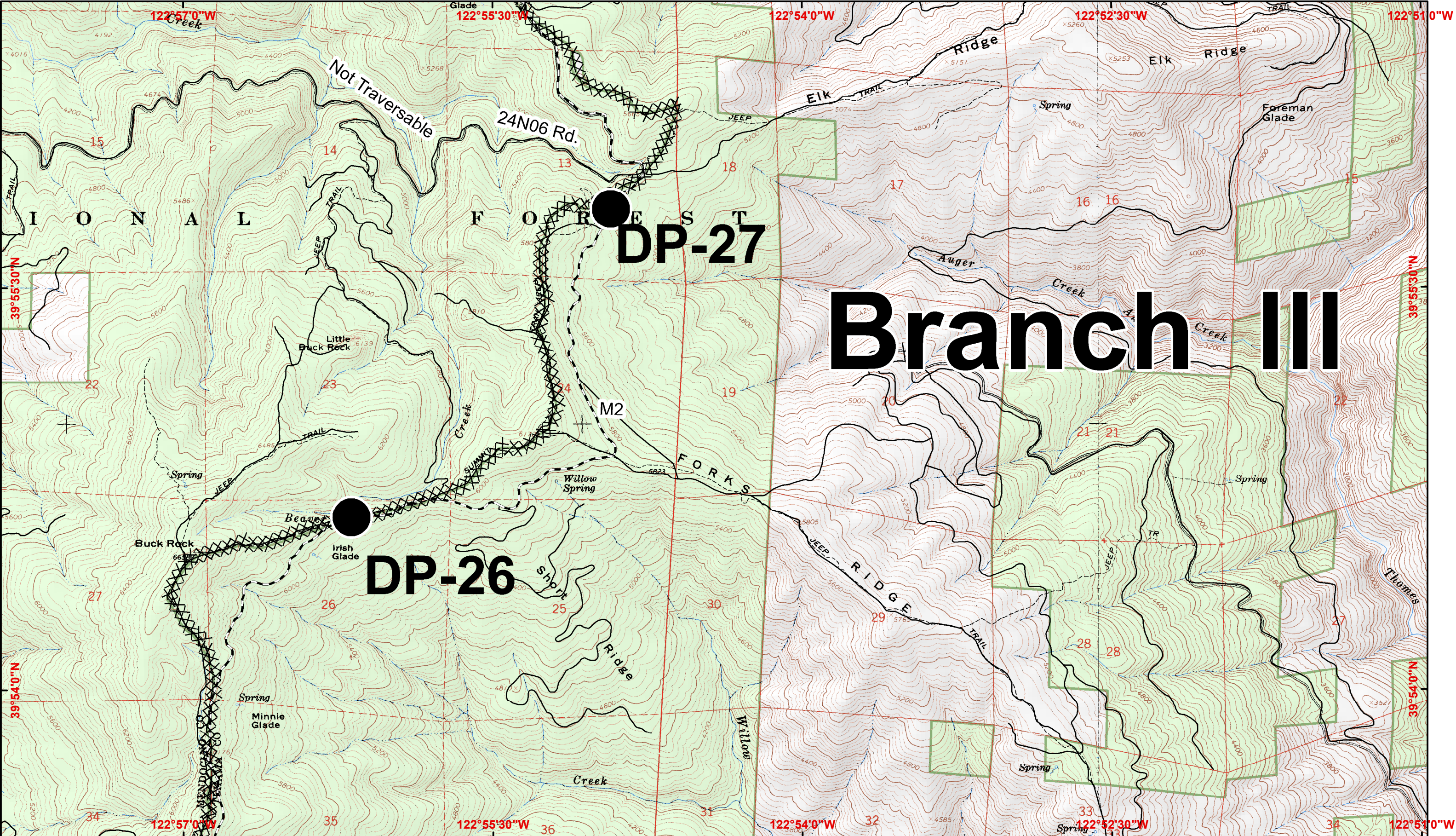
- ⊕ MediVac Site
- United States Bureau of Land Management
- US Forest Service
- Bureau of Indian Affairs

- Wilderness Areas



1:24,000
 CONTOUR INTERVAL 40 FEET





Branch III

North Pass Fire
CA-MNF-1446
CA-MEU-5763

- Completed Line
- Completed Dozer Line
- Uncontrolled Fire Edge
- Contingency Line
- High Value Timber Sale

- Division
- Branch
- Drop Point
- Safety Zone
- Water Source
- First Aid Station

- MediVac Site
- United States Bureau of Land Management
- US Forest Service
- Bureau of Indian Affairs

Wilderness Areas
 1 0.5 0 1 Miles
 1:24,000
 CONTOUR INTERVAL 40 FEET



Draft Site

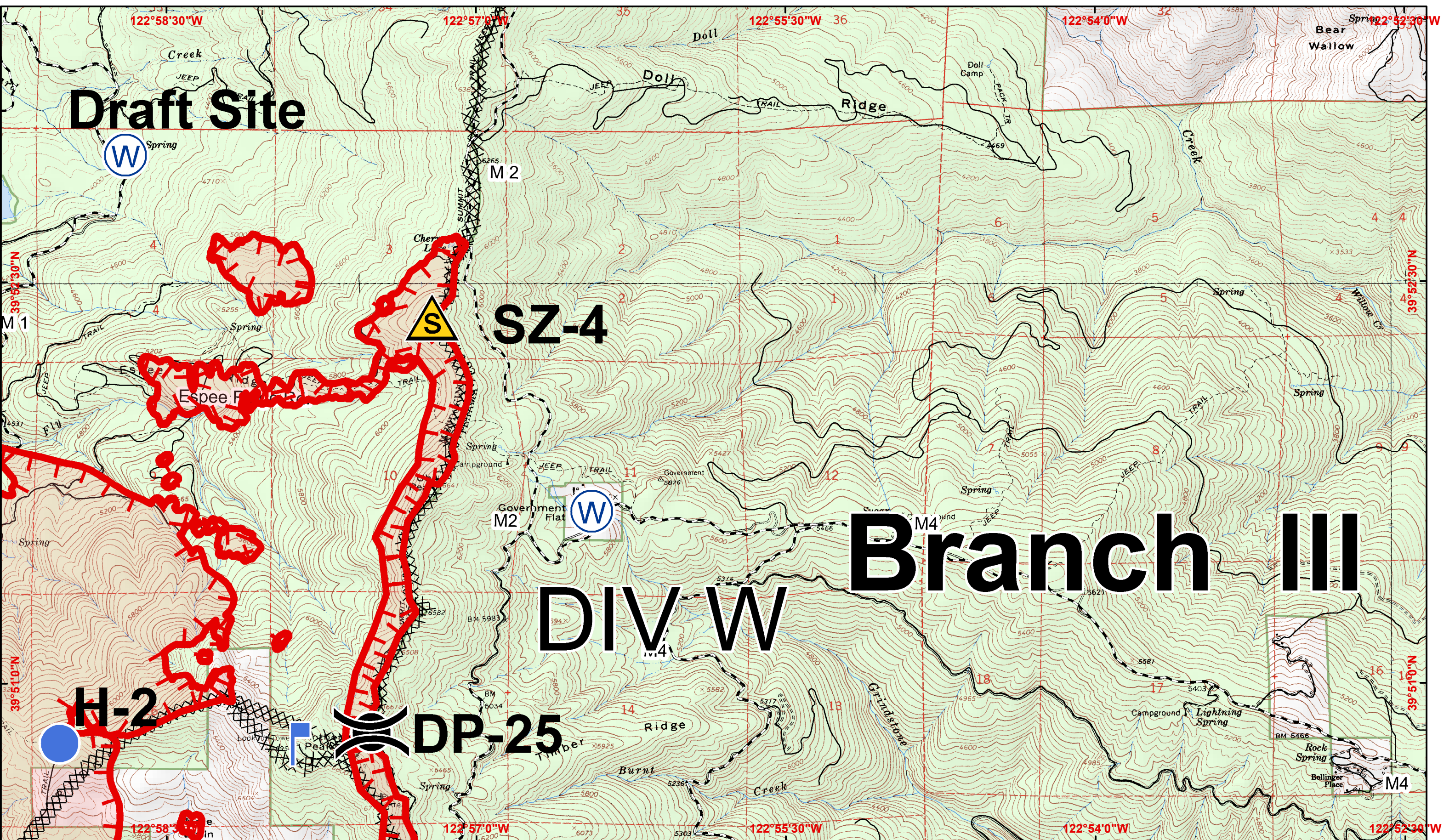
Branch III

DIV W

SZ-4

H-2

DP-25



IAP Map August 30 2012
Page 12 0700-1900
NAD 83, UTM Zone 10

North Pass Fire
CA-MNF-1446
CA-MEU-5763

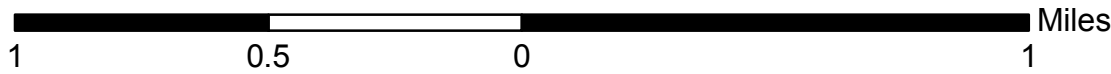
- Completed Line
- Completed Dozer Line
- Uncontrolled Fire Edge
- Contingency Line
- High Value Timber Sale

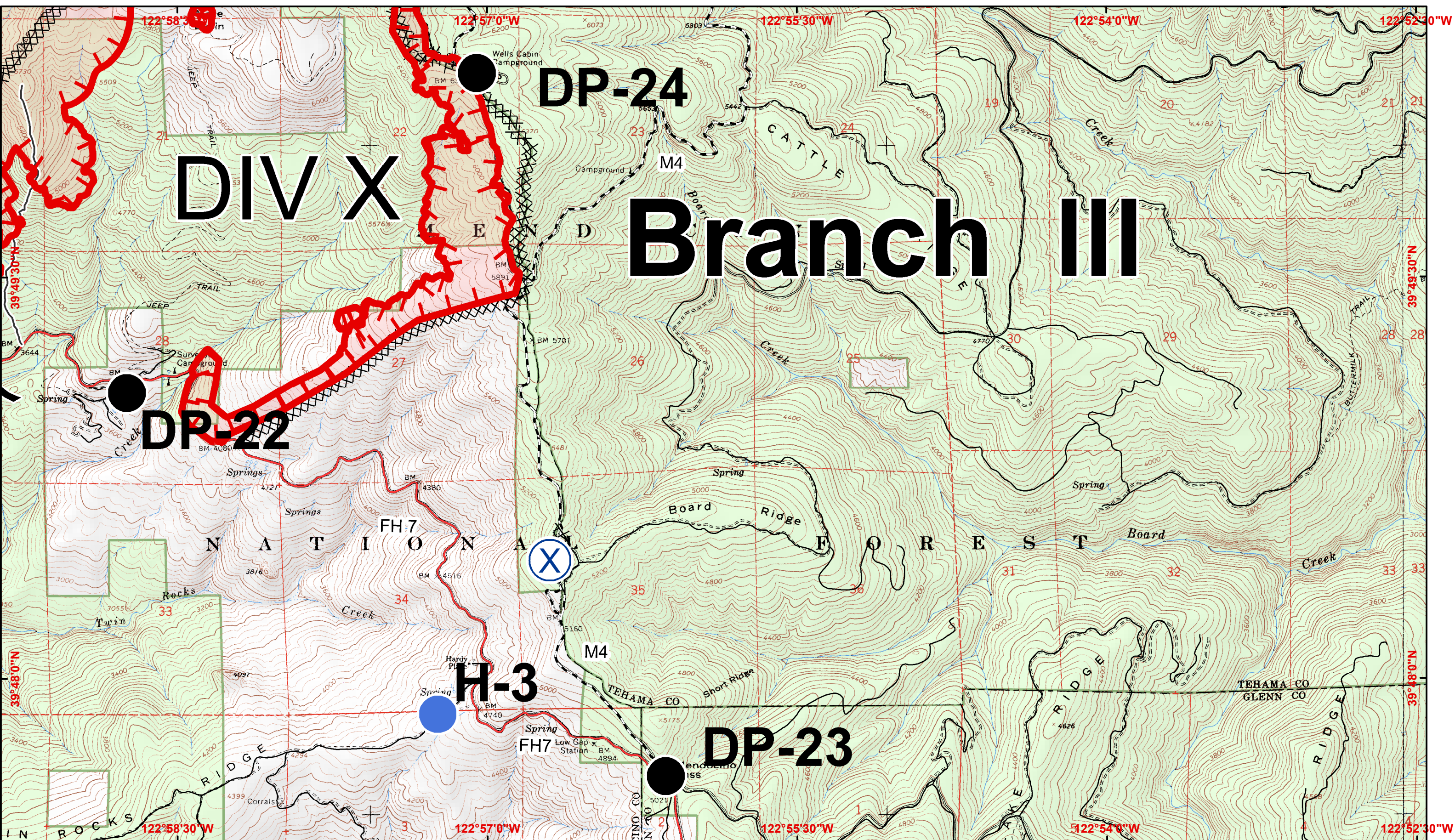
- Division
- Branch
- Drop Point
- Safety Zone
- Water Source
- First Aid Station

- MediVac Site
- United States Bureau of Land Management
- US Forest Service
- Bureau of Indian Affairs

Wilderness Areas

1:24,000
CONTOUR INTERVAL 40 FEET





DIV X

DP-24

Branch III

DP-22

H-3

DP-23

IAP Map August 30 2012
 Page 13 0700-1900
 NAD 83, UTM Zone 10

North Pass Fire
CA-MNF-1446
CA-MEU-5763

- Completed Line
- XXXXXX Completed Dozer Line
- Uncontrolled Fire Edge
- Contingency Line
- High Value Timber Sale

- () Division
- || Branch
- Drop Point
- ▲ Safety Zone
- W Water Source
- ⊕ First Aid Station
- ⊕ MediVac Site

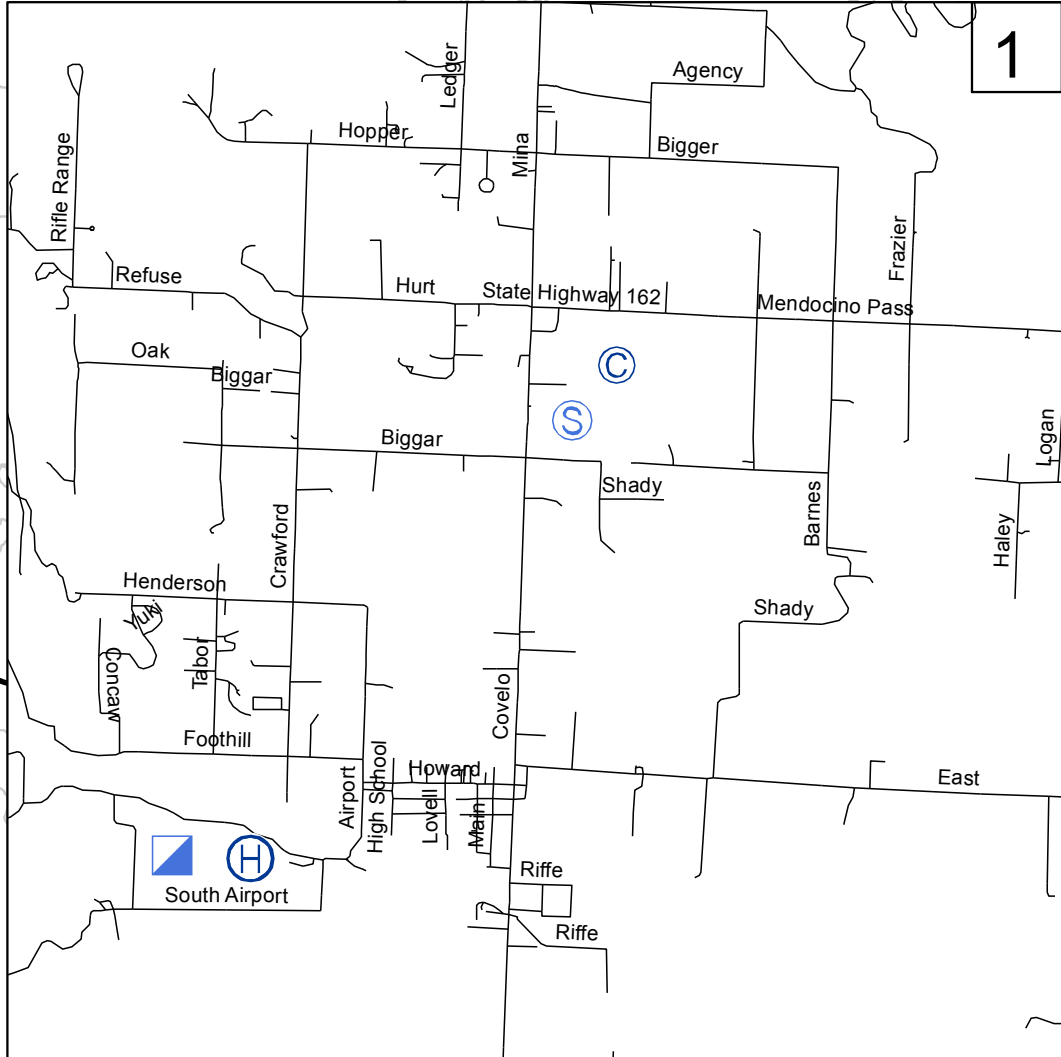
1 0.5 0 1 Miles

United States Bureau of Land Management
 US Forest Service
 Bureau of Indian Affairs
 Wilderness Areas

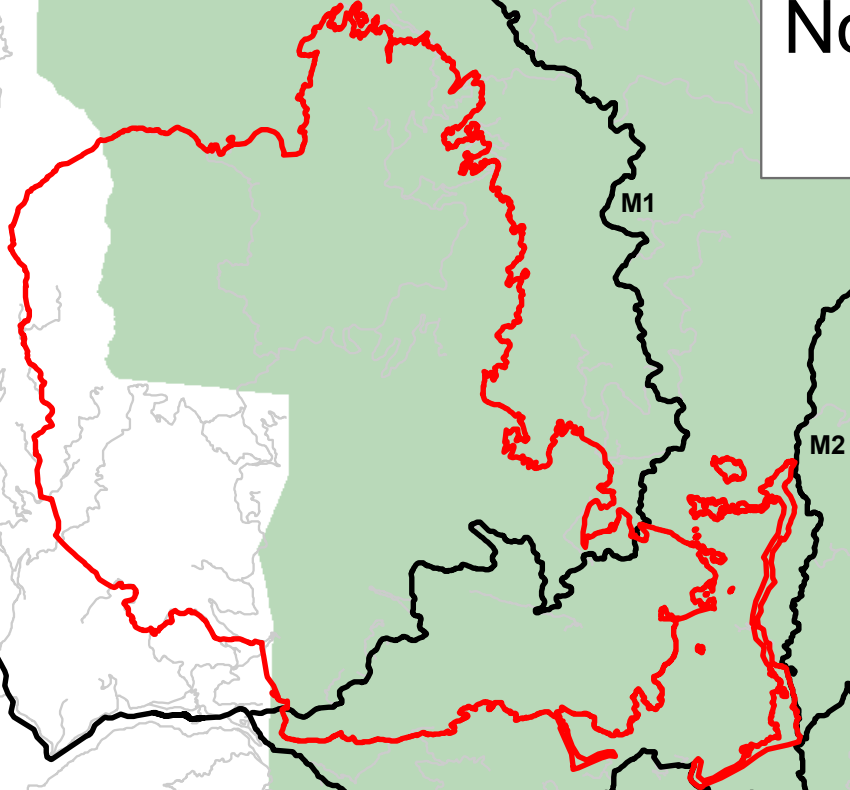
1:24,000
 CONTOUR INTERVAL 40 FEET



North Pass Fire Travel Map



See Details at Left 1



Camp
Spike Camp

Legend

- Camp
- Incident Command Post
- Staging Area
- Helibase

**From Willits to the North Pass Fire:
Go North on Highway 101 to Highway 162.
Travel east on Highway 162, through Covelo,
to Mendocino Pass Road (aka Highway 162).
Travel approximatley 10 miles to the North Pass fire.**

August 30, 2012
CA-MNF-1446
CA-MEU-5763