

IAP Map
September 4, 2012

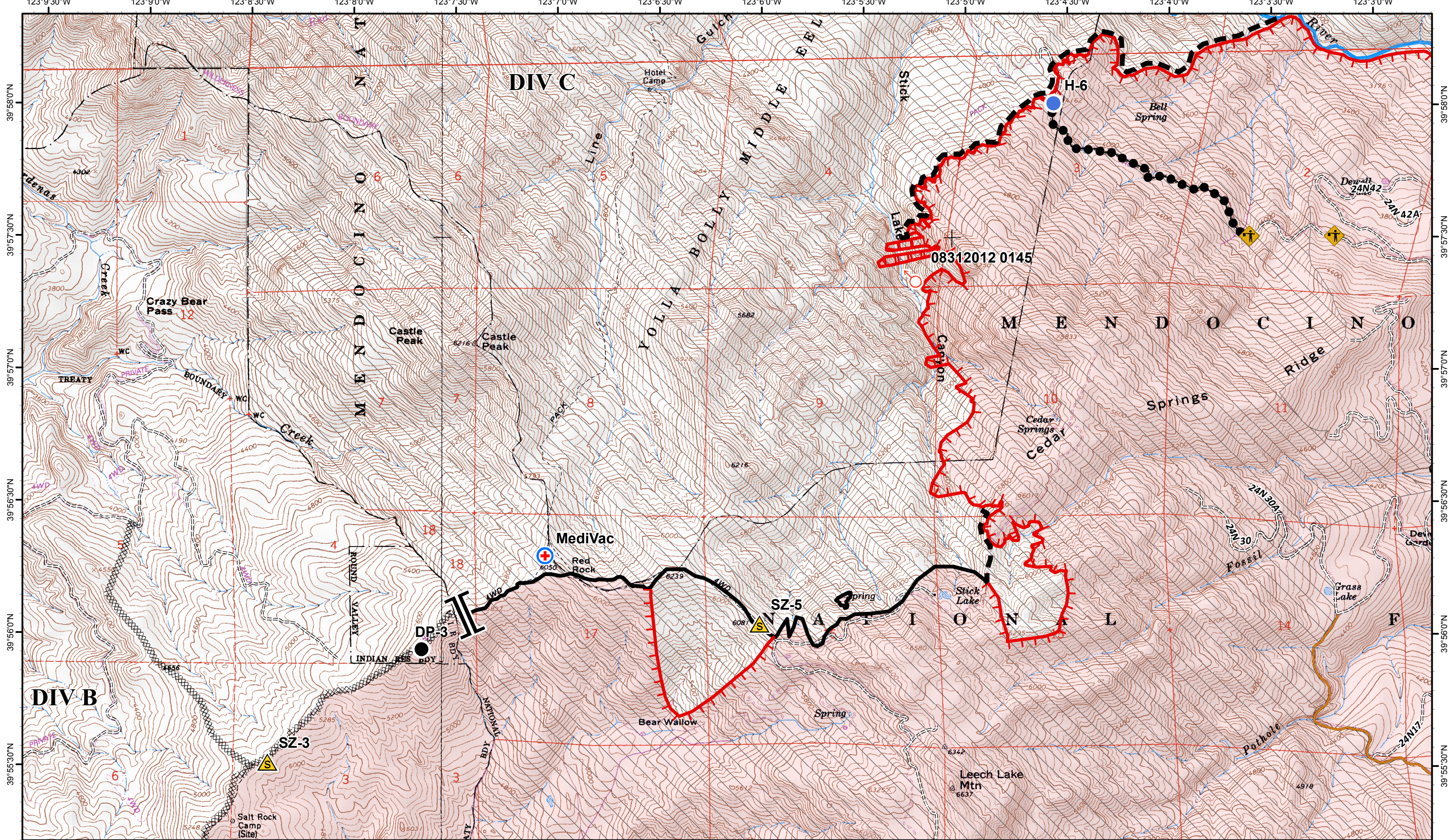
SoCal Team 1 20120903 2200

Page 1
NAD 83, UTM Zone 10
CONTOUR INTERVAL 40 FEET

- | | | | | | |
|--------------|------------------------------|---------------------|-------------------------|------------------------|------------------|
| (X) Division | — Uncontrolled Fire Edge | (C) Camp | ● Helispot | (X) Mobil Weather Unit | ↑ Spot Fire |
| Branch | — Completed Contingency Line | ● Drop Point | ▀ Incident Command Post | (R) Repeater | (W) Water Source |
| ◆ DeadEnd | XXXXX Completed Dozer Line | + First Aid Station | ▭ Lookout | ▲ Safety Zone | □ Cabin |
| ⚠ Equipment | — Completed Line | (H) Helibase | ⊕ MediVac Site | □ Fire Area | ▨ Wilderness |
| | — Hand Line | | | | |
| | ●● Not Traversable Road | | | | |

Miles 0 0.5 1

North Pass Fire
CA-MNF-1446



IAP Map
September 4, 2012

SoCal Team 1 20120903 2200

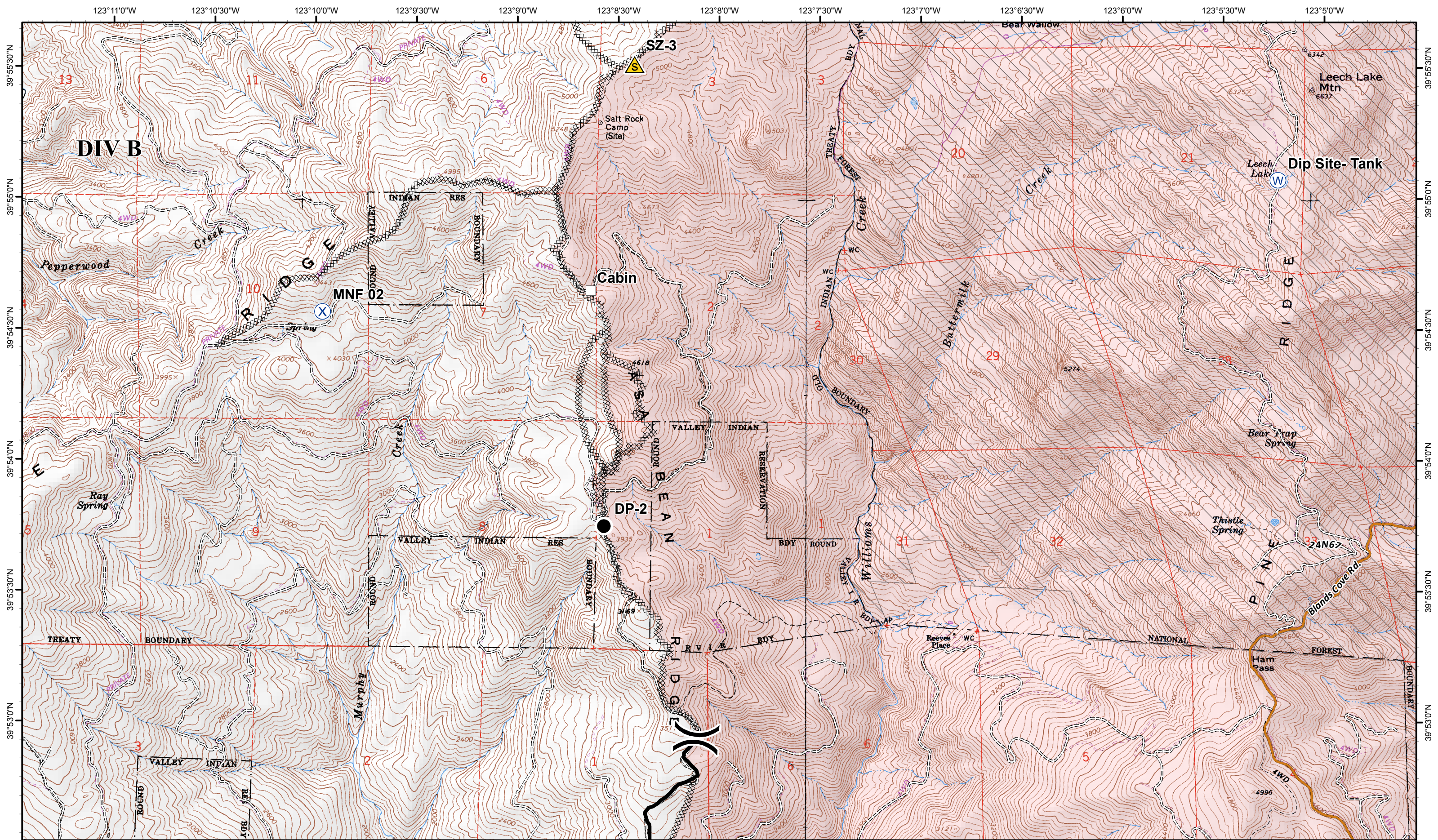
Page 2
NAD 83, UTM Zone 10
CONTOUR INTERVAL 40 FEET

- | | | | | | |
|---------------|----------------------------------|-----------------------|---------------------------|------------------------|------------------|
| (X) Division | —+— Uncontrolled Fire Edge | (C) Camp | (●) Helispot | (X) Mobil Weather Unit | (●) Spot Fire |
| Branch | - - - Completed Contingency Line | (●) Drop Point | (■) Incident Command Post | (R) Repeater | (W) Water Source |
| (◆) DeadEnd | XXXXX Completed Dozer Line | (+) First Aid Station | (■) Lookout | (▲) Safety Zone | (□) Cabin |
| (◆) Equipment | — Completed Line | (H) Helibase | (+) MediVac Site | (□) Fire Area | (□) Wilderness |
| | — Hand Line | | | | |
| | ●● Not Traversable Road | | | | |

Miles
0 0.5 1

N

North Pass Fire
CA-MNF-1446



IAP Map
September 4, 2012

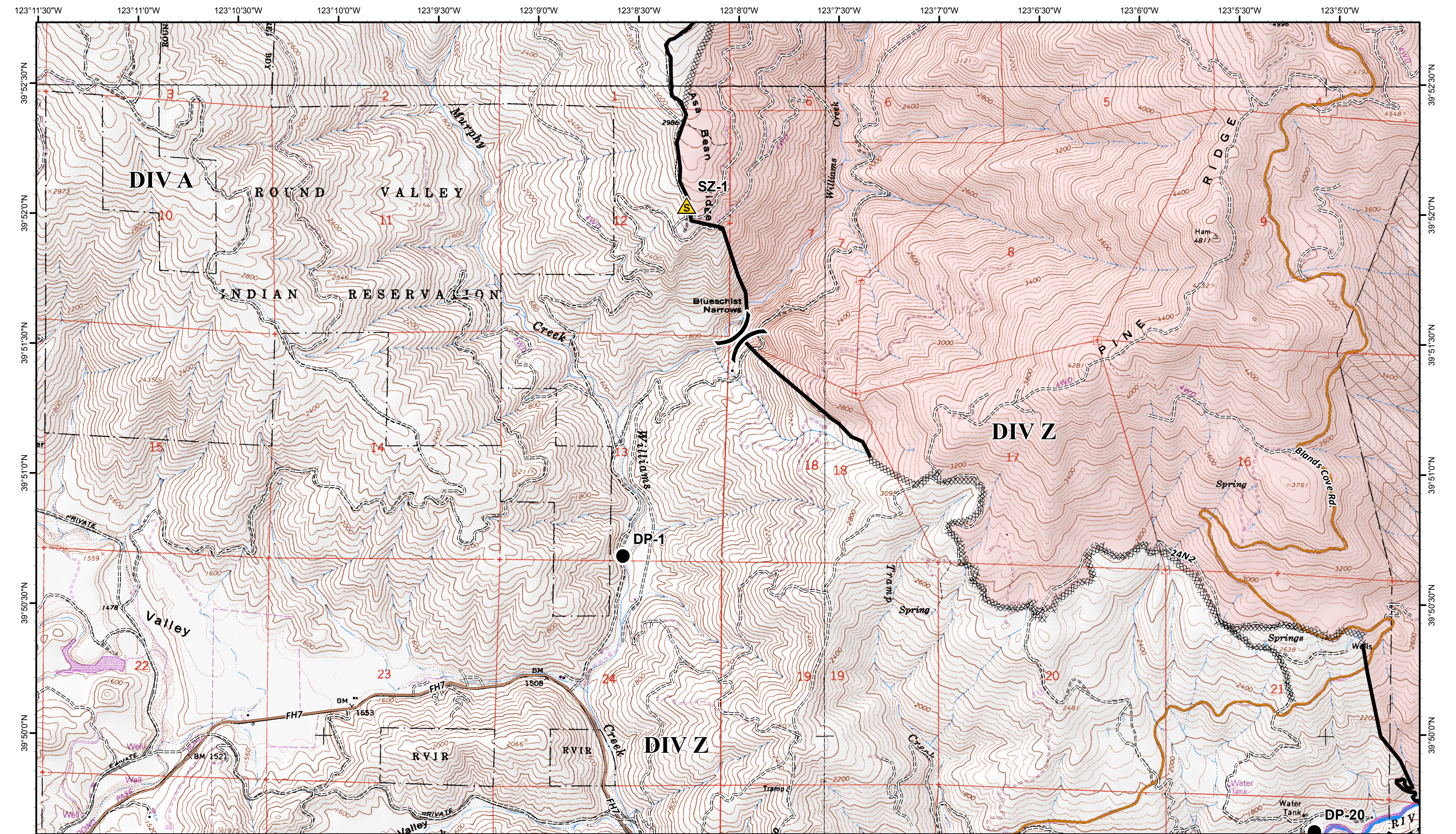
SoCal Team 1 20120903 2200

Page 3
NAD 83, UTM Zone 10
CONTOUR INTERVAL 40 FEET

- | | | | | | |
|---------------|----------------------------|-----------------------|---------------------------|------------------------|------------------|
| (X) Division | Uncontrolled Fire Edge | (C) Camp | (●) Helispot | (X) Mobil Weather Unit | (●) Spot Fire |
| () Branch | Completed Contingency Line | (●) Drop Point | (■) Incident Command Post | (R) Repeater | (W) Water Source |
| (▲) DeadEnd | Completed Dozer Line | (+) First Aid Station | (□) Lookout | (□) Cabin | (■) Fire Area |
| (⚠) Equipment | Completed Line | (H) Helibase | (+) MediVac Site | (■) Wilderness | |
| | Hand Line | | | | |
| | Not Traversable Road | | | | |

Miles
0 0.5 1

North Pass Fire
CA-MNF-1446



IAP Map
September 4, 2012

Page 4
NAD 83, UTM Zone 10
CONTOUR INTERVAL 40 FEET

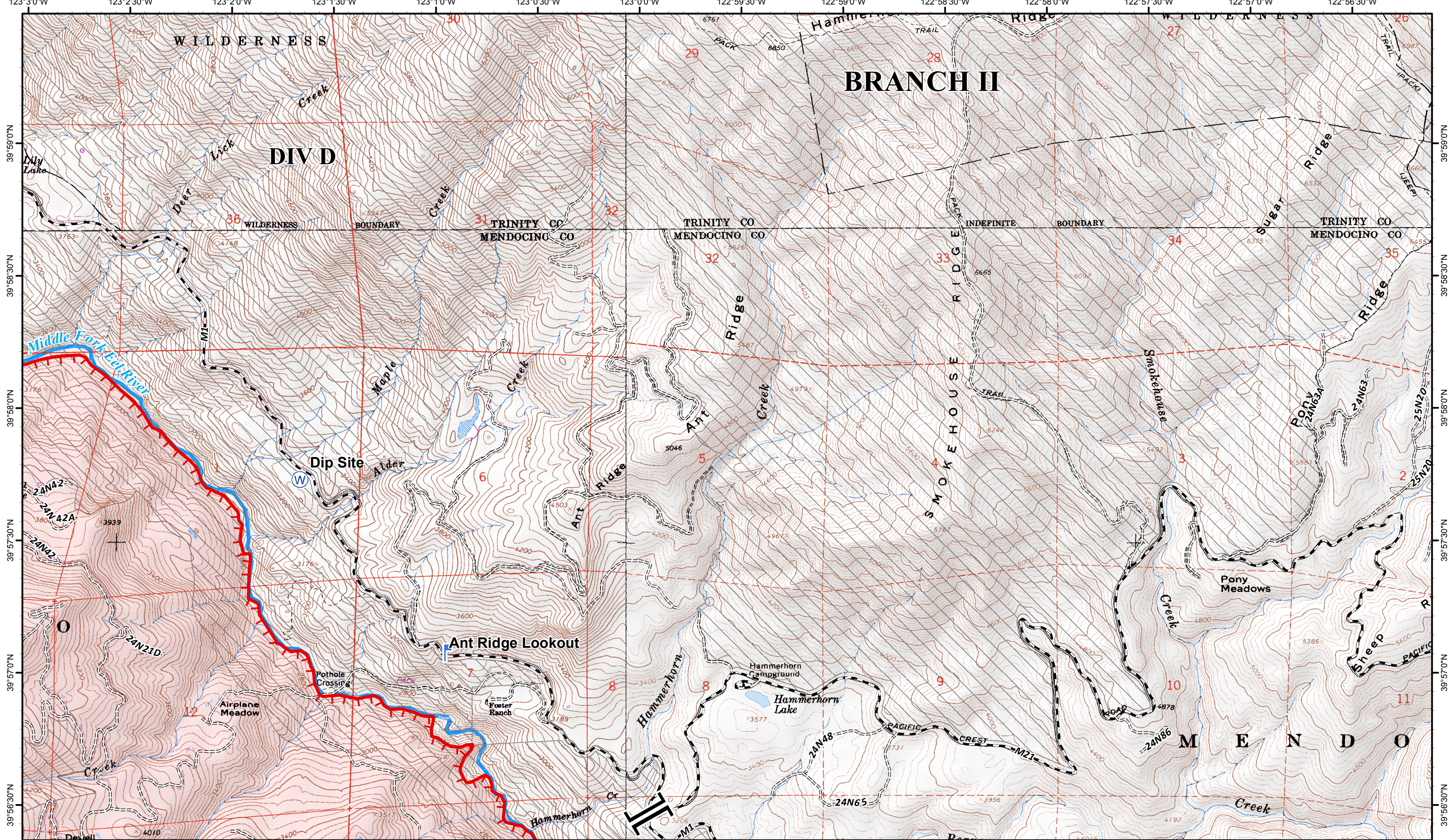
SoCal Team 1 20120903 2200

- | | | | | | |
|--------------------------|--------------------------------|-----------------------|---------------------------|------------------------|------------------|
| (X) Division | (—) Uncontrolled Fire Edge | (C) Camp | (●) Helispot | (X) Mobil Weather Unit | (↑) Spot Fire |
| () Branch | (—) Completed Contingency Line | (●) Drop Point | (■) Incident Command Post | (R) Repeater | (W) Water Source |
| (▲) DeadEnd | (XXXX) Completed Dozer Line | (+) First Aid Station | (L) Lookout | (▲) Safety Zone | (□) Cabin |
| (⚡) Equipment | (—) Completed Line | (H) Helibase | (+) MediVac Site | (□) Wilderness | (□) Fire Area |
| (●) Not Traversable Road | (—) Hand Line | | | | |

Miles
0 0.5 1

N

North Pass Fire
CA-MNF-1446



IAP Map
September 4, 2012

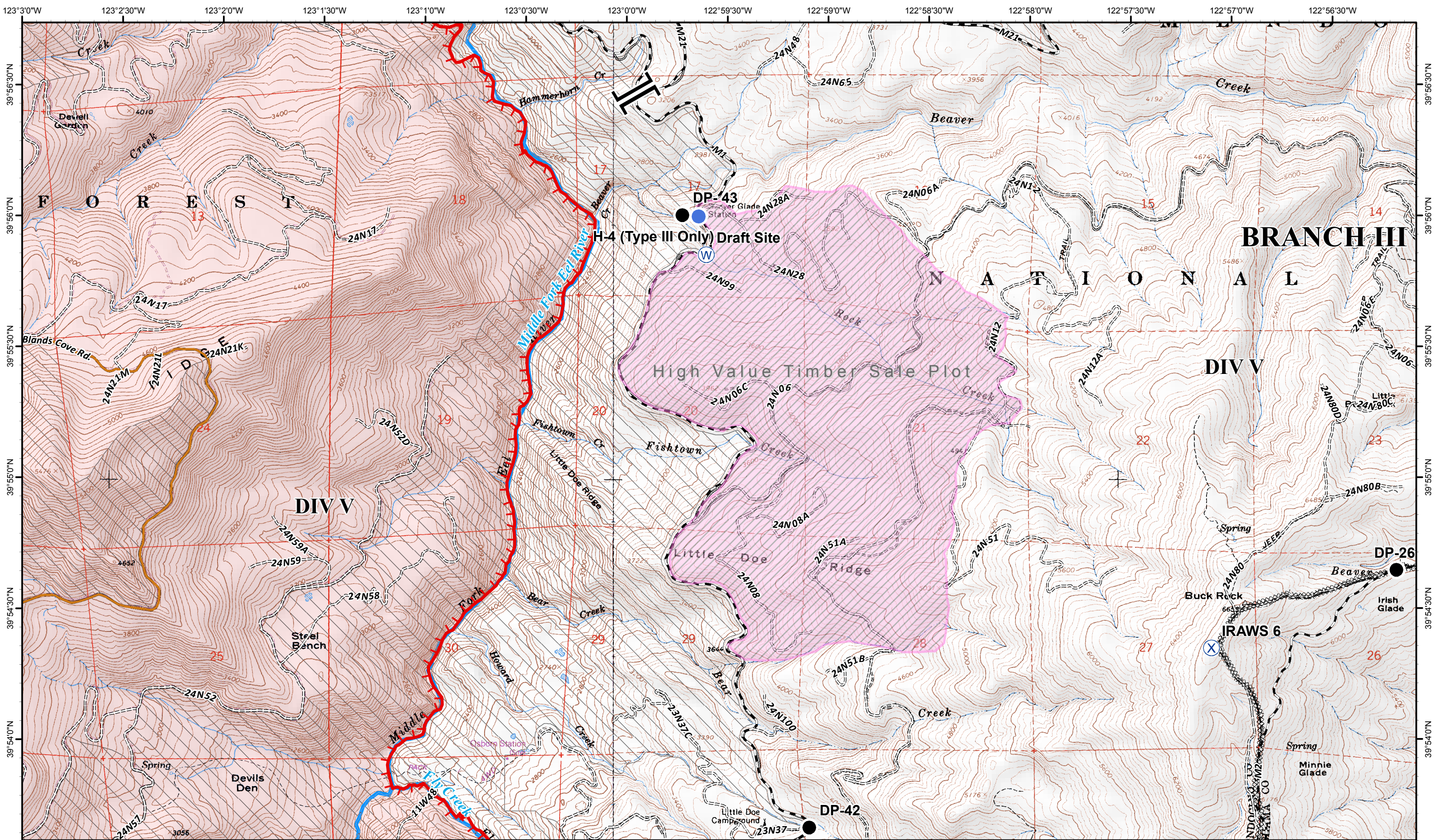
Page 5
NAD 83, UTM Zone 10
CONTOUR INTERVAL 40 FEET

SoCal Team 1 20120903 2200

- | | | | | | |
|--------------|------------------------------|-----------------------|---------------------------|------------------------|------------------|
| (X) Division | — Uncontrolled Fire Edge | (C) Camp | (●) Helispot | (X) Mobil Weather Unit | (●) Spot Fire |
| Branch | — Completed Contingency Line | (●) Drop Point | (■) Incident Command Post | (R) Repeater | (W) Water Source |
| ◆ DeadEnd | XXXXX Completed Dozer Line | (+) First Aid Station | (L) Lookout | (S) Safety Zone | (□) Cabin |
| ⚠ Equipment | — Completed Line | (H) Helibase | (+) MediVac Site | (□) Fire Area | (□) Wilderness |
| | — Hand Line | | | | |
| | ●● Not Traversable Road | | | | |

Miles
0 0.5 1

North Pass Fire
CA-MNF-1446



IAP Map
September 4, 2012

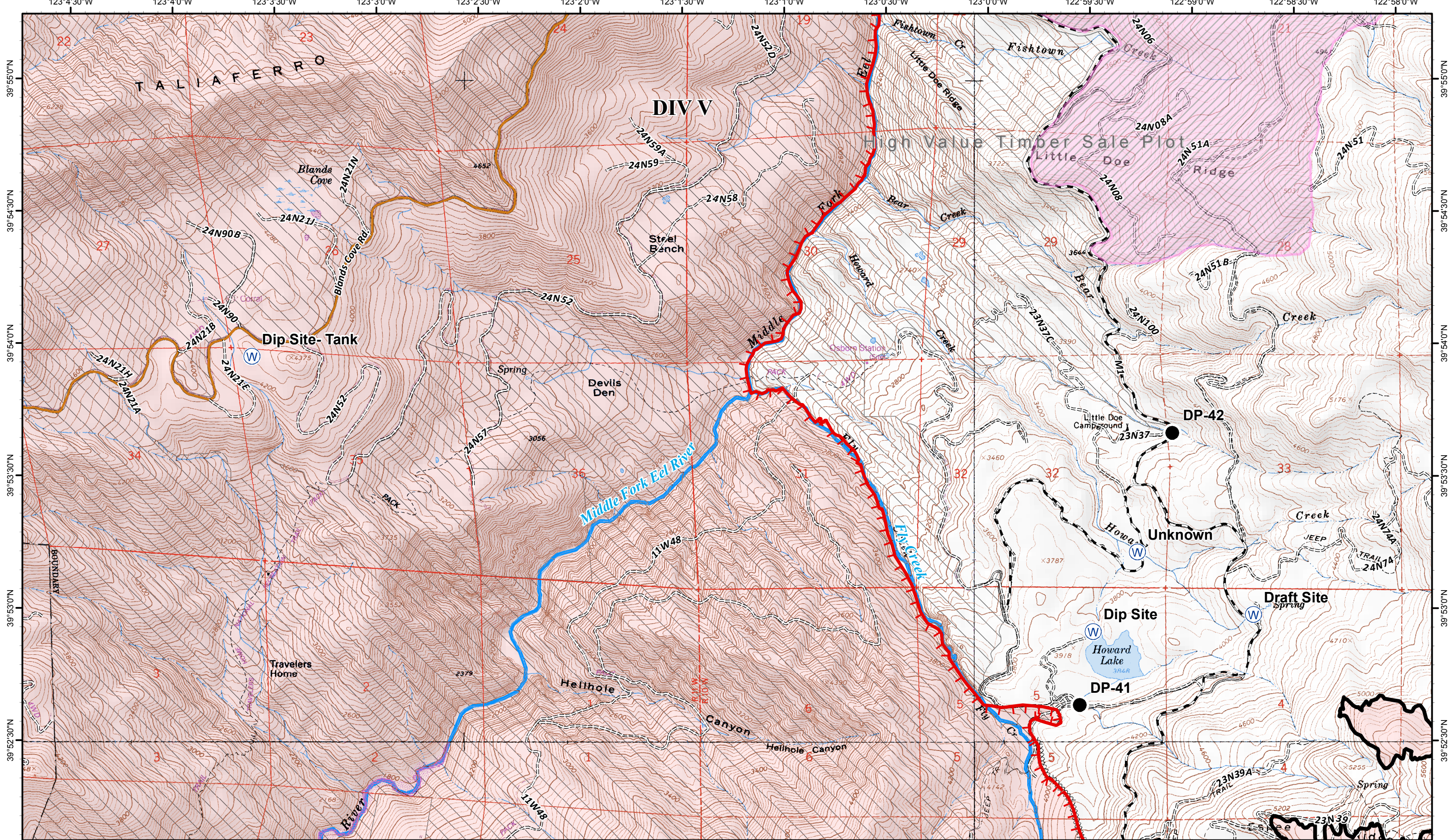
Page 6
NAD 83, UTM Zone 10
CONTOUR INTERVAL 40 FEET

SoCal Team 1 20120903 2200

- | | | | | | |
|---------------|------------------------------|-----------------------|---------------------------|------------------------|------------------|
| (X) Division | — Uncontrolled Fire Edge | (C) Camp | (●) Helispot | (X) Mobil Weather Unit | (●) Spot Fire |
| () Branch | — Completed Contingency Line | (●) Drop Point | (■) Incident Command Post | (R) Repeater | (W) Water Source |
| (◆) DeadEnd | XXXXX Completed Dozer Line | (+) First Aid Station | (■) Lookout | (▲) Safety Zone | (□) Cabin |
| (⚠) Equipment | — Completed Line | (H) Helibase | (+) MediVac Site | (□) Wilderness | (□) Fire Area |
| | — Hand Line | | | | |
| | ●● Not Traversable Road | | | | |

Miles
0 0.5 1

North Pass Fire
CA-MNF-1446



IAP Map
September 4, 2012

Page 7
NAD 83, UTM Zone 10
CONTOUR INTERVAL 40 FEET

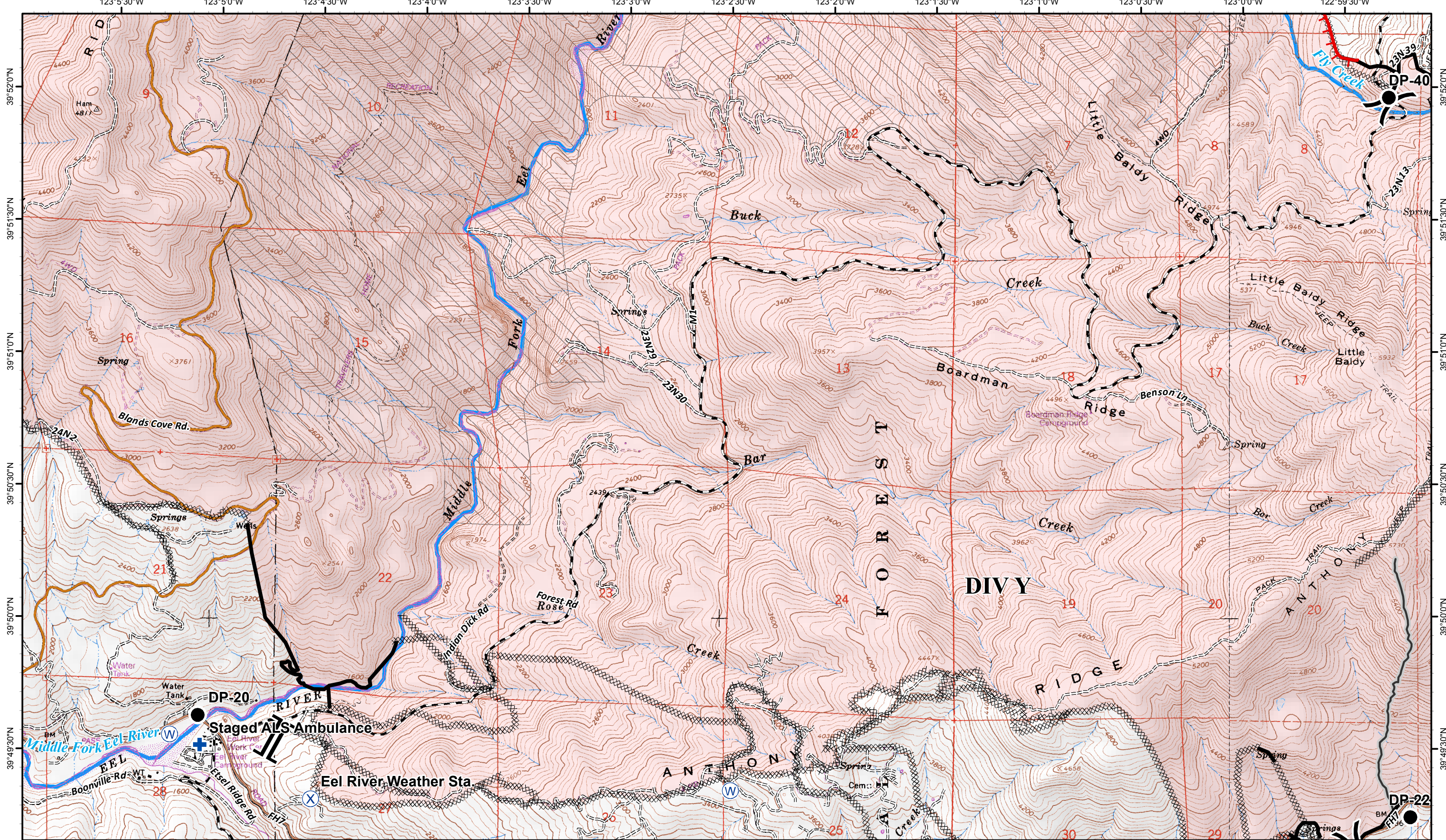
SoCal Team 1 20120903 2200

- | | | | | | |
|---------------|----------------------------------|-----------------------|---------------------------|------------------------|------------------|
| (X) Division | — Uncontrolled Fire Edge | (C) Camp | (●) Helispot | (X) Mobil Weather Unit | (●) Spot Fire |
| () Branch | - - - Completed Contingency Line | (●) Drop Point | (■) Incident Command Post | (R) Repeater | (W) Water Source |
| (◆) DeadEnd | XXXXX Completed Dozer Line | (+) First Aid Station | (□) Lookout | (▲) Safety Zone | (□) Cabin |
| (⚠) Equipment | — Completed Line | (H) Helibase | (+) MediVac Site | (□) Wilderness | |
| | — Hand Line | | | | |
| | ●● Not Traversable Road | | | | |

Miles
0 0.5 1

N

North Pass Fire
CA-MNF-1446



IAP Map
September 4, 2012

Page 8
NAD 83, UTM Zone 10
CONTOUR INTERVAL 40 FEET

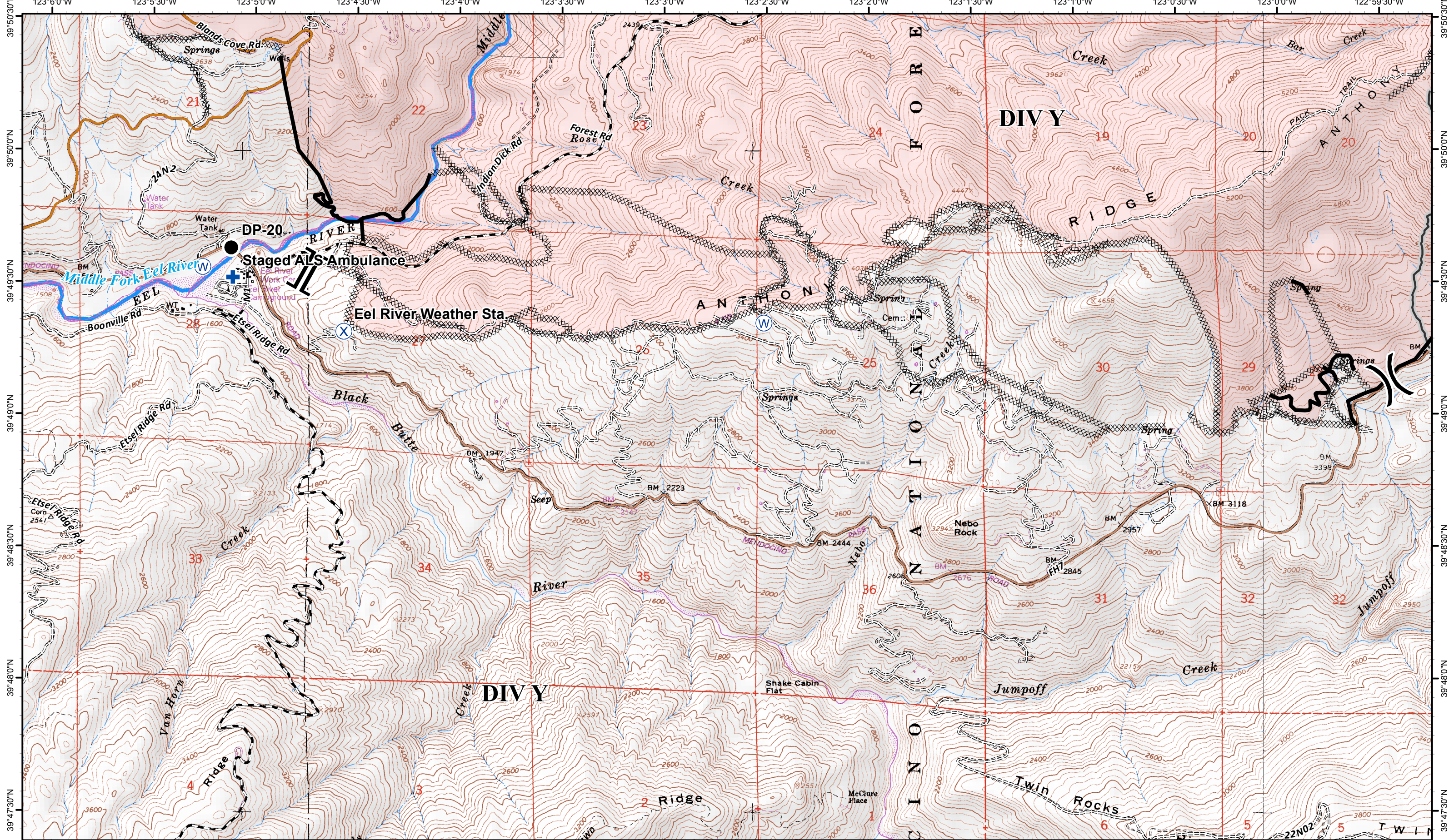
SoCal Team 1 20120903 2200

- | | | | | | |
|---------------|----------------------------|-----------------------|---------------------------|------------------------|------------------|
| (X) Division | Uncontrolled Fire Edge | (C) Camp | (●) Helispot | (X) Mobil Weather Unit | (●) Spot Fire |
| () Branch | Completed Contingency Line | (●) Drop Point | (■) Incident Command Post | (R) Repeater | (W) Water Source |
| (◆) DeadEnd | Completed Dozer Line | (+) First Aid Station | () Lookout | (▲) Safety Zone | (□) Cabin |
| (⚠) Equipment | Completed Line | (H) Helibase | (+) MediVac Site | (■) Wilderness | (■) Fire Area |
| | Hand Line | | | | |
| | Not Traversable Road | | | | |

Miles
0 0.5 1

N

North Pass Fire
CA-MNF-1446



IAP Map
September 4, 2012

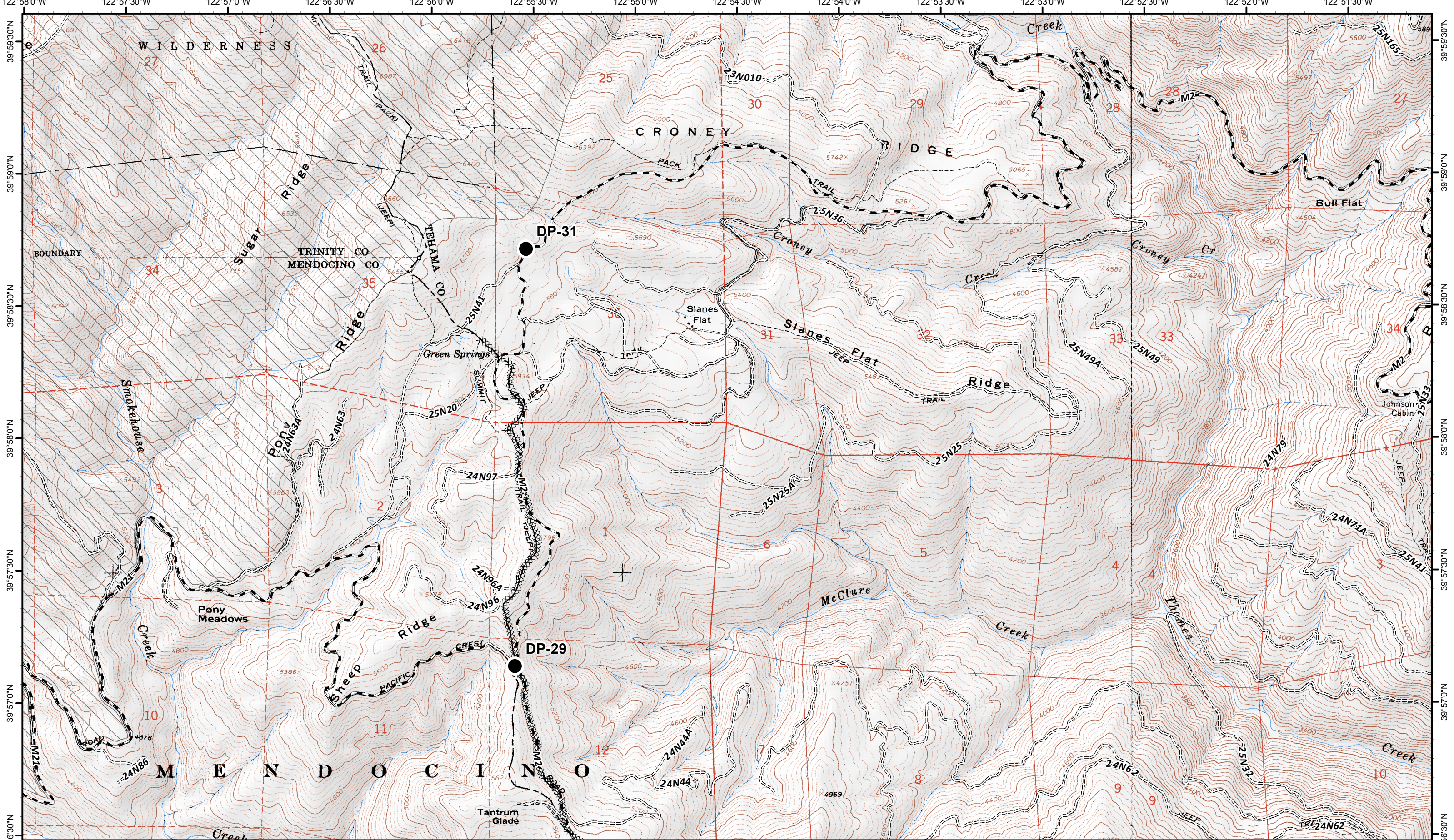
Page 9
NAD 83, UTM Zone 10
CONTOUR INTERVAL 40 FEET

SoCal Team 1 20120903 2200

- | | | | | | | | | | | | |
|-------|----------------------|--------|----------------------------|-----|-------------------|-----|-----------------------|-----|--------------------|-----|--------------|
| (X) | Division | (—) | Uncontrolled Fire Edge | (C) | Camp | (●) | Helispot | (X) | Mobil Weather Unit | (↑) | Spot Fire |
| () | Branch | (—) | Completed Contingency Line | (●) | Drop Point | (■) | Incident Command Post | (R) | Repeater | (W) | Water Source |
| (◆) | DeadEnd | (XXXX) | Completed Dozer Line | (+) | First Aid Station | (L) | Lookout | (S) | Safety Zone | (□) | Cabin |
| (⚡) | Equipment | (—) | Completed Line | (H) | Helibase | (+) | MediVac Site | (□) | Wilderness | | |
| (●—●) | Not Traversable Road | (—) | Hand Line | | | | | | | | |

Miles
0 0.5 1

North Pass Fire
CA-MNF-1446



IAP Map
September 4, 2012

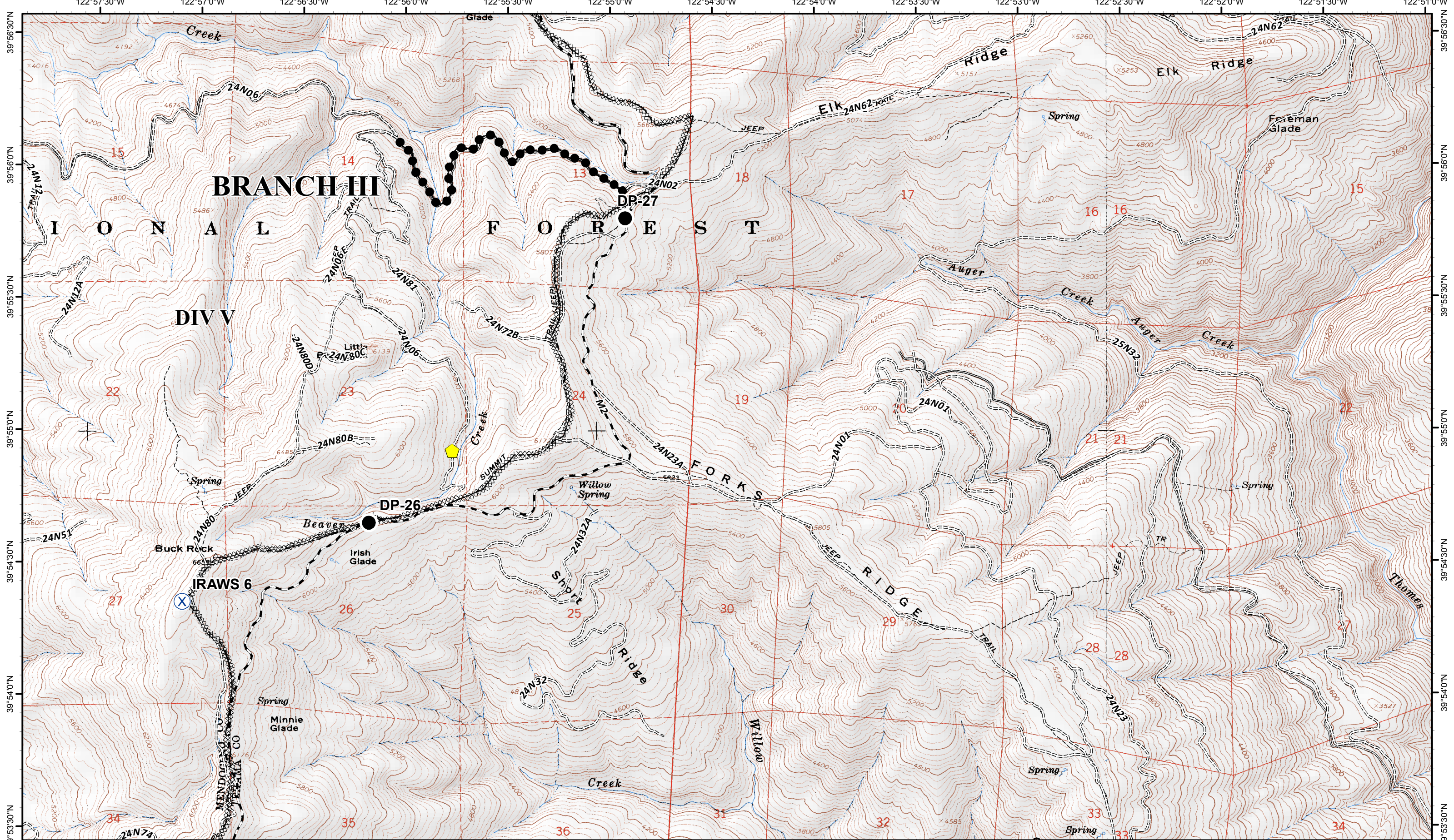
Page 10
NAD 83, UTM Zone 10
CONTOUR INTERVAL 40 FEET

SoCal Team 1 20120903 2200

- | | | | | | |
|---------------|------------------------------------|-----------------------|---------------------------|------------------------|------------------|
| (X) Division | (—) Uncontrolled Fire Edge | (C) Camp | (●) Helispot | (X) Mobil Weather Unit | (↑) Spot Fire |
| () Branch | (- - -) Completed Contingency Line | (●) Drop Point | (■) Incident Command Post | (R) Repeater | (W) Water Source |
| (◆) DeadEnd | (XXXX) Completed Dozer Line | (+) First Aid Station | () Lookout | (▲) Safety Zone | (□) Cabin |
| (⚠) Equipment | (—) Completed Line | (H) Helibase | (+) MediVac Site | (■) Fire Area | (▨) Wilderness |
| | (—) Hand Line | | | | |
| | (●-●) Not Traversable DP | | | | |

Miles
0 0.5 1

North Pass Fire
CA-MNF-1446



IAP Map
September 4, 2012

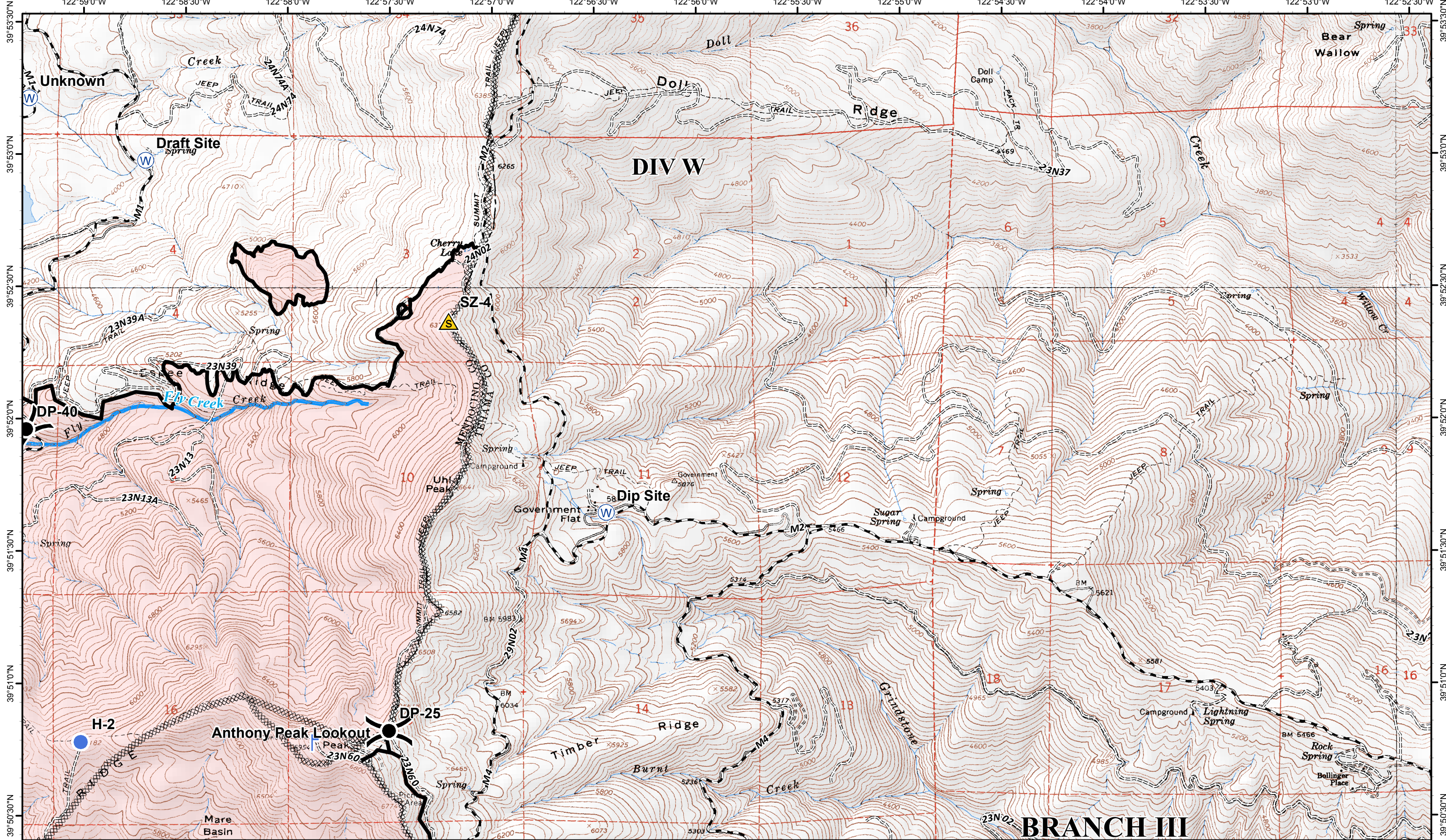
Page 11
NAD 83, UTM Zone 10
CONTOUR INTERVAL 40 FEET

SoCal Team 1 20120903 2200

- | | | | | | |
|--------------|----------------------------|---------------------|-----------------------|------------------------|------------------|
| (X) Division | Uncontrolled Fire Edge | (C) Camp | Helispot | (X) Mobil Weather Unit | Spot Fire |
| Branch | Completed Contingency Line | ● Drop Point | Incident Command Post | (R) Repeater | (W) Water Source |
| DeadEnd | Completed Dozer Line | + First Aid Station | Lookout | Safety Zone | □ Cabin |
| Equipment | Completed Line | (H) Helibase | MediVac Site | Fire Area | Wilderness |
| | Hand Line | | | | |
| | Not Traversable Road | | | | |

Miles
0 0.5 1

North Pass Fire
CA-MNF-1446



IAP Map
September 4, 2012

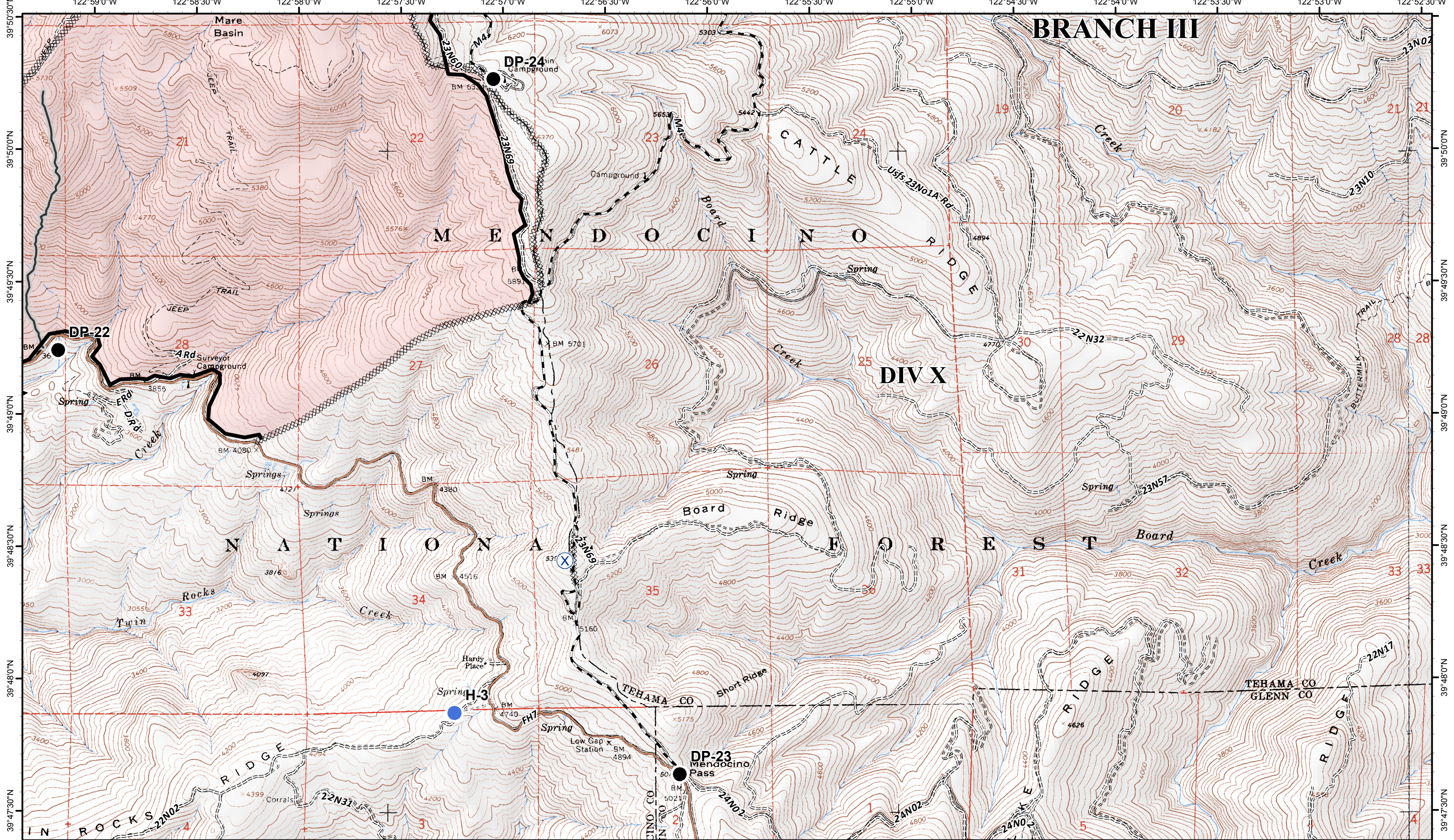
Page 12
NAD 83, UTM Zone 10
CONTOUR INTERVAL 40 FEET

SoCal Team 1 20120903 2200

- | | | | | | |
|---------------|------------------------------|-----------------------|---------------------------|------------------------|------------------|
| (X) Division | — Uncontrolled Fire Edge | (C) Camp | (●) Helispot | (X) Mobil Weather Unit | (↑) Spot Fire |
| () Branch | — Completed Contingency Line | (●) Drop Point | (■) Incident Command Post | (R) Repeater | (W) Water Source |
| (▲) DeadEnd | XXXXX Completed Dozer Line | (+) First Aid Station | (L) Lookout | (S) Safety Zone | (□) Cabin |
| (⚠) Equipment | — Completed Line | (H) Helibase | (+) MediVac Site | (□) Wilderness | (■) Fire Area |
| | — Hand Line | | | | |
| | ●— Not Traversable Road | | | | |

Miles
0 0.5 1

North Pass Fire
CA-MNF-1446



IAP Map
September 4, 2012

Page 13
NAD 83, UTM Zone 10
CONTOUR INTERVAL 40 FEET

SoCal Team 1 20120903 2200

- | | | | | | |
|--------------|----------------------------|---------------------|-----------------------|------------------------|------------------|
| (X) Division | Uncontrolled Fire Edge | (C) Camp | Helispot | (X) Mobil Weather Unit | Spot Fire |
| Branch | Completed Contingency Line | ● Drop Point | Incident Command Post | (R) Repeater | (W) Water Source |
| DeadEnd | Completed Dozer Line | + First Aid Station | Lookout | Safety Zone | Cabin |
| Equipment | Completed Line | (H) Helibase | MediVac Site | | Fire Area |
| | Hand Line | | | | Wilderness |
| | Not Traversable Road | | | | |

Miles
0 0.5 1

North Pass Fire
CA-MNF-1446