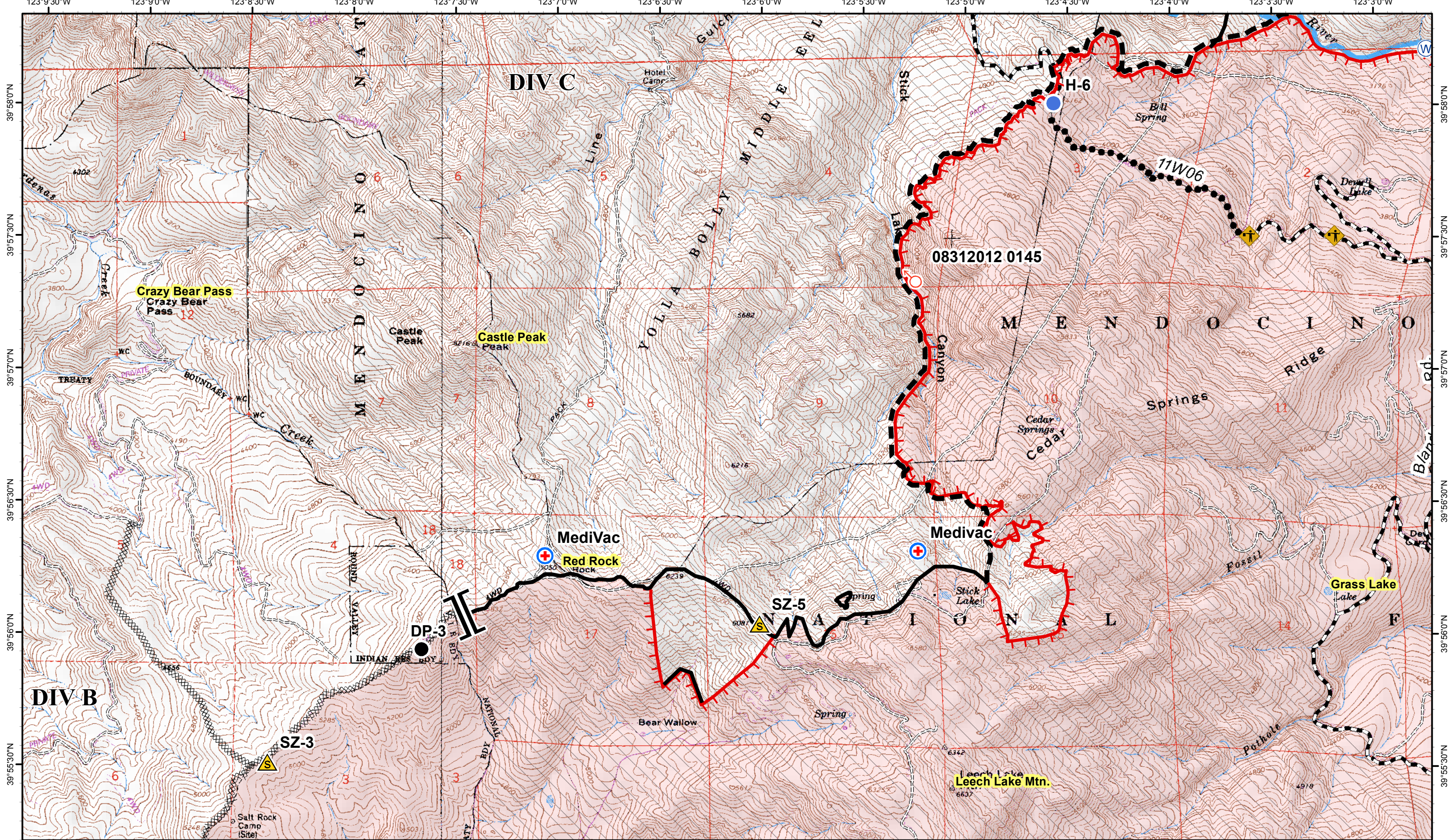


- | | | | | | |
|-----------------------------------|-------------------------------------|-------------------------------|-------------------------------------|-------------------------------|---------------------------|
| (X) Division | [Red Line] Uncontrolled Fire Edge | (C) Camp | (Blue Circle) Helispot | (X) Mobil Weather Unit | (Red Circle) Spot Fire |
| [Dashed Line] Branch | [Solid Line] Controlled Line | (Black Circle) Drop Point | (Blue Square) Incident Command Post | (R) Repeater | (W) Water Source |
| (Yellow Diamond) DeadEnd | [Dotted Line] Completed Line | (Blue Plus) First Aid Station | [Blue Square] Lookout | (Yellow Triangle) Safety Zone | (White Square) Cabin |
| (Yellow Diamond with T) Equipment | [Crossed Line] Completed Dozer Line | (Blue H) Helibase | (Blue Plus) MediVac Site | [Red Area] Fire Area | [Hatched Area] Wilderness |
| | [Dashed Line] Hand Line | | | | |

Miles
 0 0.5 1

North Pass Fire
CA-MNF-1446



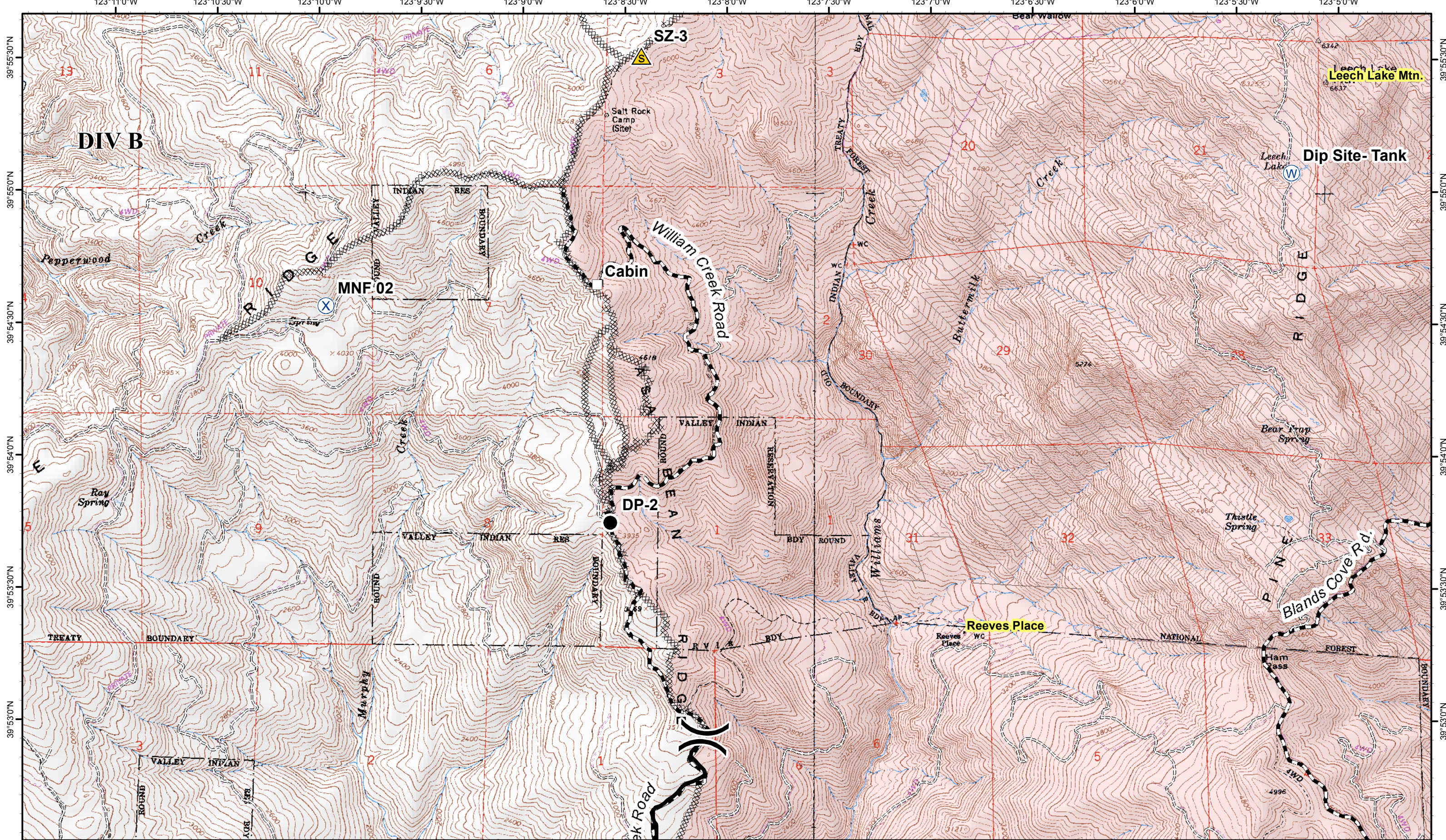
IAP Map
 September 6, 2012
 SoCal Team 1 20120905 2127

Page 2
 NAD 83, UTM Zone 10
 CONTOUR INTERVAL 40 FEET

- | | | | | | |
|---------------|-----------------------------|-----------------------|---------------------------|------------------------|------------------|
| (X) Division | (—) Uncontrolled Fire Edge | (C) Camp | (●) Helispot | (X) Mobil Weather Unit | (○) Spot Fire |
| () Branch | (—) Controlled Line | (●) Drop Point | (■) Incident Command Post | (R) Repeater | (W) Water Source |
| (▲) DeadEnd | (- - -) Completed Line | (+) First Aid Station | (—) Lookout | (▲) Safety Zone | (□) Cabin |
| (⚡) Equipment | (XXXX) Completed Dozer Line | (H) Helibase | (+) MediVac Site | | (■) Fire Area |
| | (—) Hand Line | | | | (□) Wilderness |

Miles
 0 0.5 1

North Pass Fire
CA-MNF-1446



IAP Map
September 6, 2012

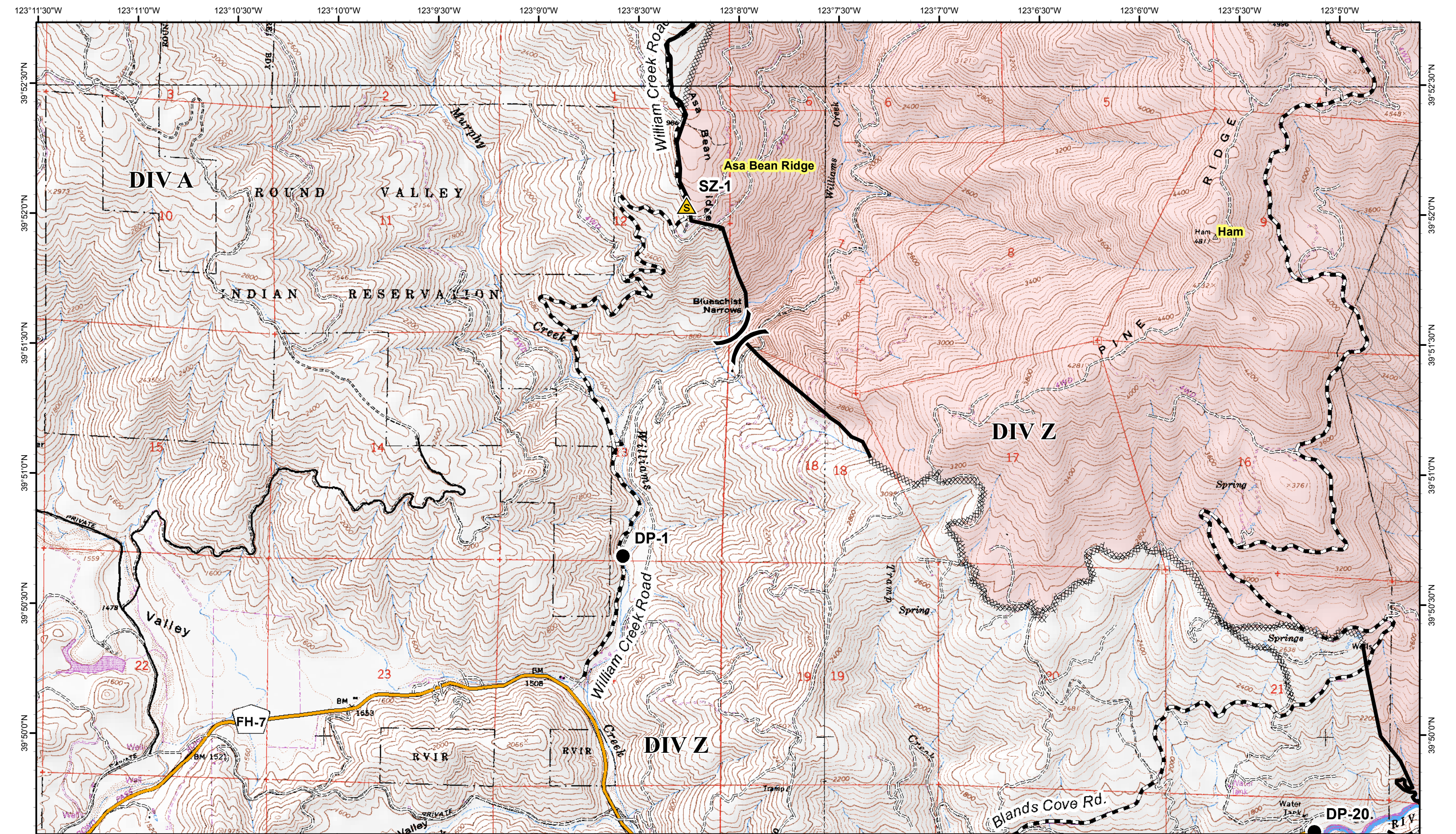
Page 3
NAD 83, UTM Zone 10
CONTOUR INTERVAL 40 FEET

SoCal Team 1 20120905 2127

- | | | | | | |
|---------------|-----------------------------|-----------------------|---------------------------|------------------------|------------------|
| (X) Division | (—) Uncontrolled Fire Edge | (C) Camp | (●) Helispot | (X) Mobil Weather Unit | (○) Spot Fire |
| () Branch | (—) Controlled Line | (●) Drop Point | (■) Incident Command Post | (R) Repeater | (W) Water Source |
| (▲) DeadEnd | (- -) Completed Line | (+) First Aid Station | (□) Lookout | (▲) Safety Zone | (□) Cabin |
| (⚠) Equipment | (XXXX) Completed Dozer Line | (H) Helibase | (+) MediVac Site | (□) Wilderness | |
| | (—) Hand Line | | | | |

Miles
0 0.5 1

North Pass Fire
CA-MNF-1446



IAP Map
September 6, 2012

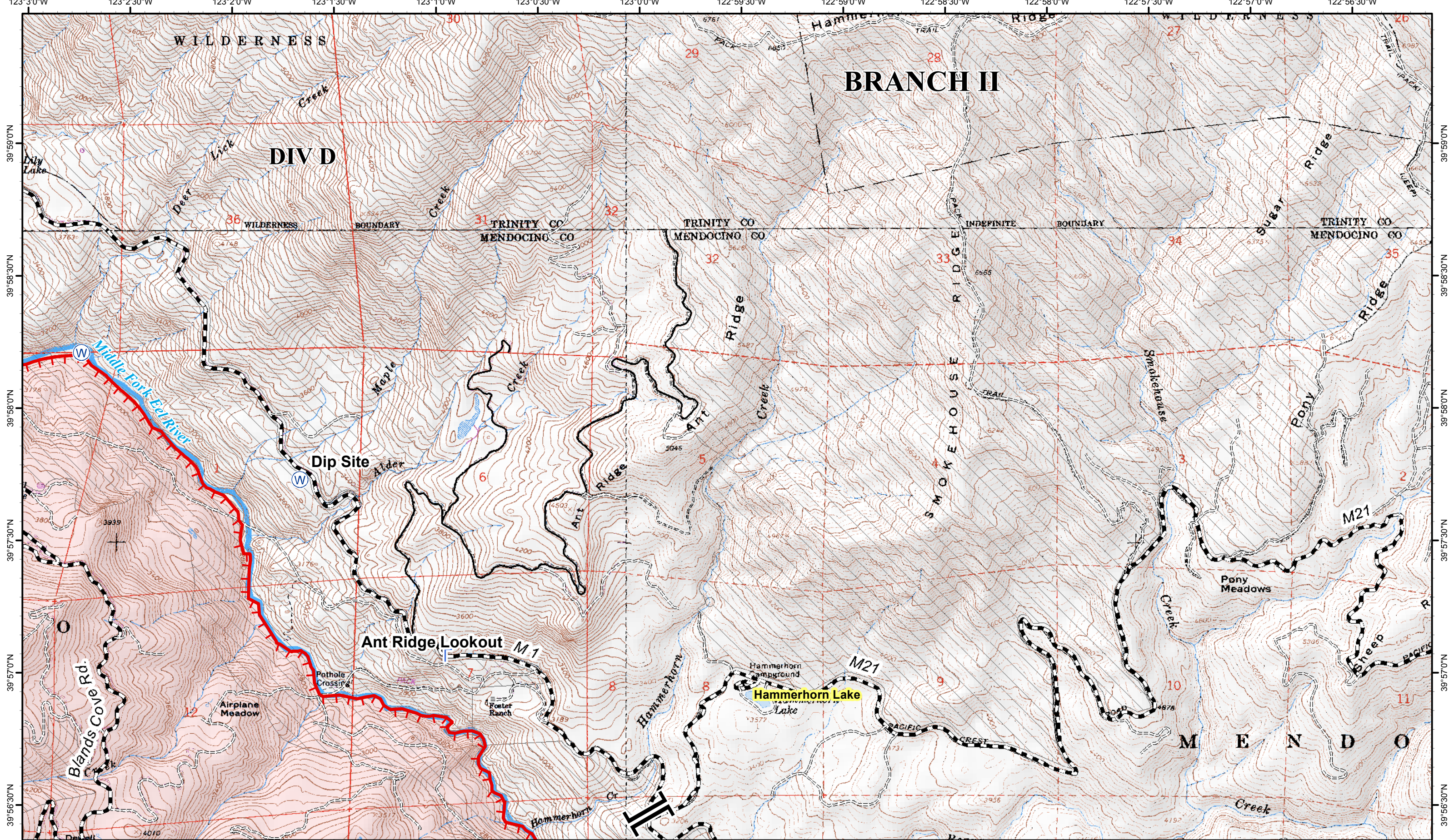
Page 4
NAD 83, UTM Zone 10
CONTOUR INTERVAL 40 FEET

SoCal Team 1 20120905 2127

- | | | | | | |
|---------------|-----------------------------|-----------------------|---------------------------|------------------------|------------------|
| (X) Division | (—) Uncontrolled Fire Edge | (C) Camp | (●) Helispot | (X) Mobil Weather Unit | (⬆) Spot Fire |
| () Branch | (—) Controlled Line | (●) Drop Point | (▢) Incident Command Post | (R) Repeater | (W) Water Source |
| (♦) DeadEnd | (- -) Completed Line | (+) First Aid Station | (▢) Lookout | (S) Safety Zone | (□) Cabin |
| (⚡) Equipment | (XXXX) Completed Dozer Line | (H) Helibase | (+) MediVac Site | | (■) Fire Area |
| | (—) Hand Line | | | | (▨) Wilderness |

Miles
0 0.5 1

North Pass Fire
CA-MNF-1446



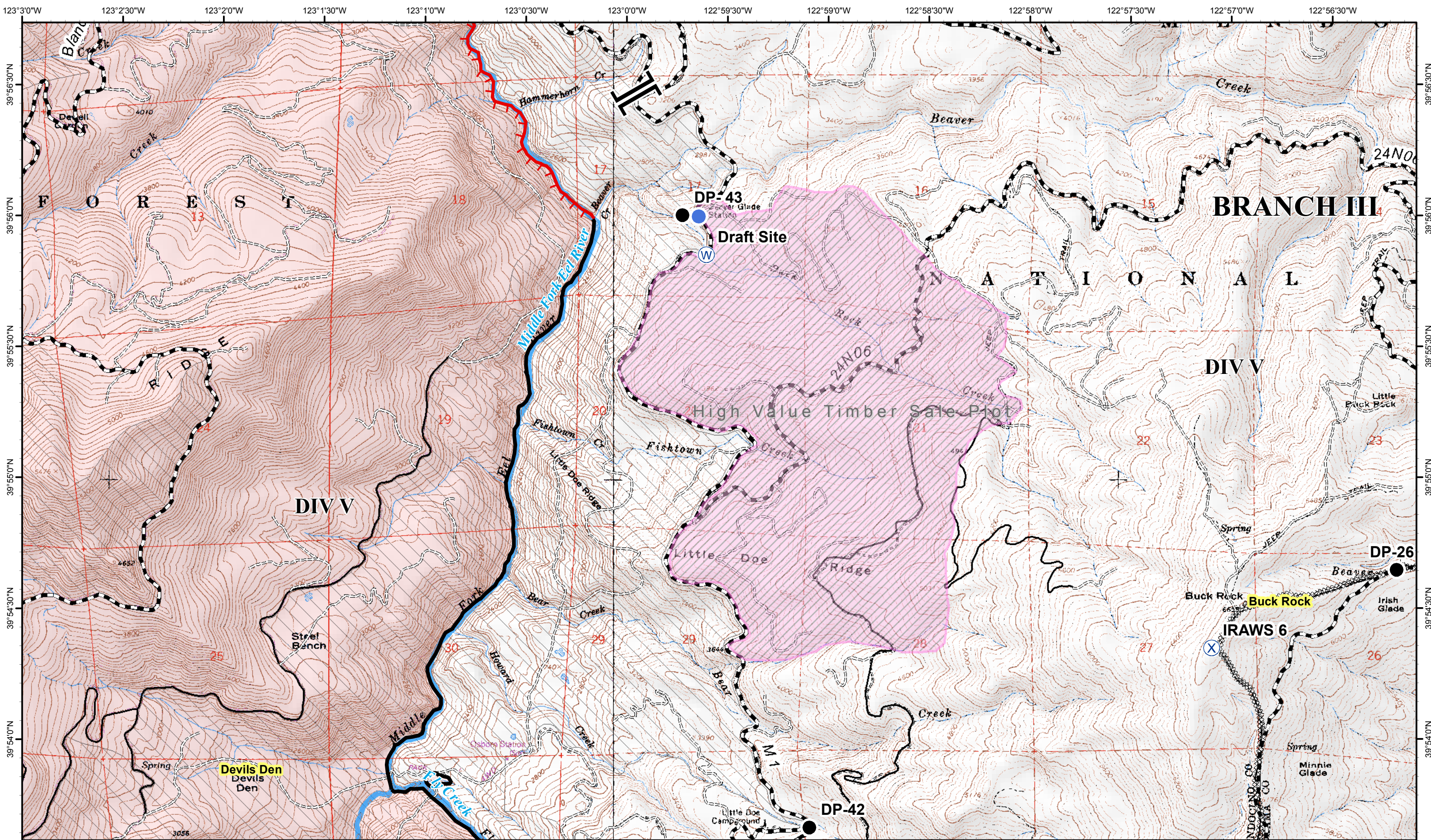
IAP Map
 September 6, 2012
 SoCal Team 1 20120905 2127

Page 5
 NAD 83, UTM Zone 10
 CONTOUR INTERVAL 40 FEET

- | | | | | | |
|---------------|-----------------------------|-----------------------|---------------------------|------------------------|------------------|
| (X) Division | (—) Uncontrolled Fire Edge | (C) Camp | (●) Helispot | (X) Mobil Weather Unit | (●) Spot Fire |
| () Branch | (—) Controlled Line | (●) Drop Point | (■) Incident Command Post | (R) Repeater | (W) Water Source |
| (◆) DeadEnd | (- - -) Completed Line | (+) First Aid Station | (L) Lookout | (S) Safety Zone | (□) Cabin |
| (⚡) Equipment | (XXXX) Completed Dozer Line | (H) Helibase | (+) MediVac Site | | (■) Fire Area |
| | (—) Hand Line | | | | (□) Wilderness |

Miles
 0 0.5 1

North Pass Fire
CA-MNF-1446



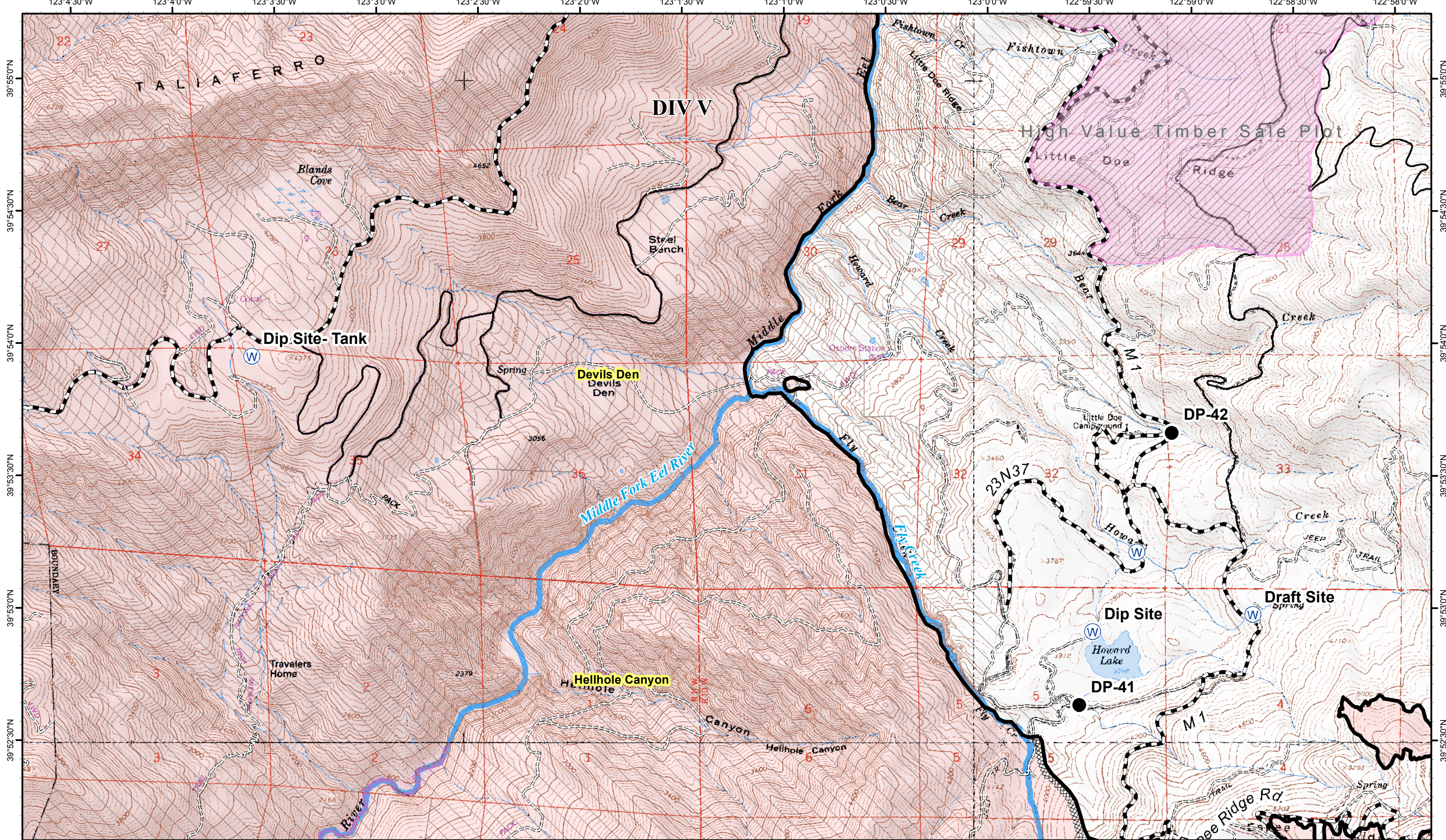
IAP Map
 September 6, 2012
 SoCal Team 1 20120905 2127

Page 6
 NAD 83, UTM Zone 10
 CONTOUR INTERVAL 40 FEET

- | | | | | | |
|----------------------------|--|---|---|---|-----------------------------|
| (X) Division | (red line) Uncontrolled Fire Edge | (C) Camp | (blue circle) Helispot | (X) Mobil Weather Unit | (red circle) Spot Fire |
| (I) Branch | (black line) Controlled Line | (black dot) Drop Point | (blue square) Incident Command Post | (R) Repeater | (W) Water Source |
| (yellow pentagon) DeadEnd | (dashed black line) Completed Line | (black plus) First Aid Station | (blue square with white triangle) Lookout | (yellow triangle with black border) Safety Zone | (white square) Cabin |
| (yellow diamond) Equipment | (dotted black line) Completed Dozer Line | (blue circle with white cross) Helibase | (red cross) MediVac Site | (pink square) Fire Area | (hatched square) Wilderness |
| | (solid black line) Hand Line | | | | |

Miles
 0 0.5 1

North Pass Fire
CA-MNF-1446



IAP Map
September 6, 2012

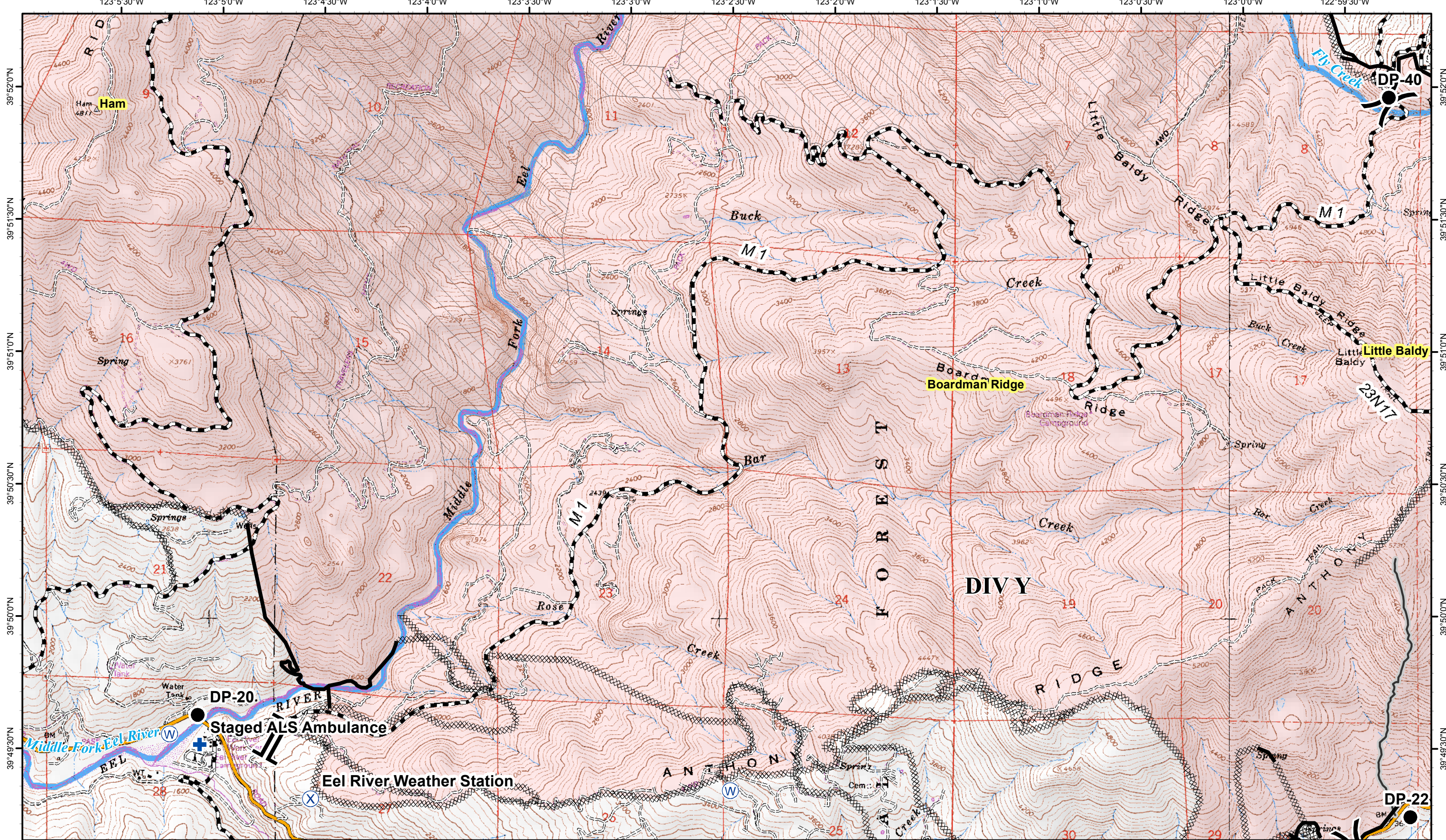
Page 7
NAD 83, UTM Zone 10
CONTOUR INTERVAL 40 FEET

SoCal Team 1 20120905 2127

- | | | | | | |
|---------------|------------------------|-----------------------|---------------------------|------------------------|------------------|
| (X) Division | Uncontrolled Fire Edge | (C) Camp | (●) Helispot | (X) Mobil Weather Unit | (●) Spot Fire |
| () Branch | Controlled Line | (●) Drop Point | (■) Incident Command Post | (R) Repeater | (W) Water Source |
| (◆) DeadEnd | Completed Line | (+) First Aid Station | (■) Lookout | (S) Safety Zone | (□) Cabin |
| (⚠) Equipment | Completed Dozer Line | (H) Helibase | (+) MediVac Site | (□) Wilderness | |
| | Hand Line | | | | |

Miles
0 0.5 1

North Pass Fire
CA-MNF-1446



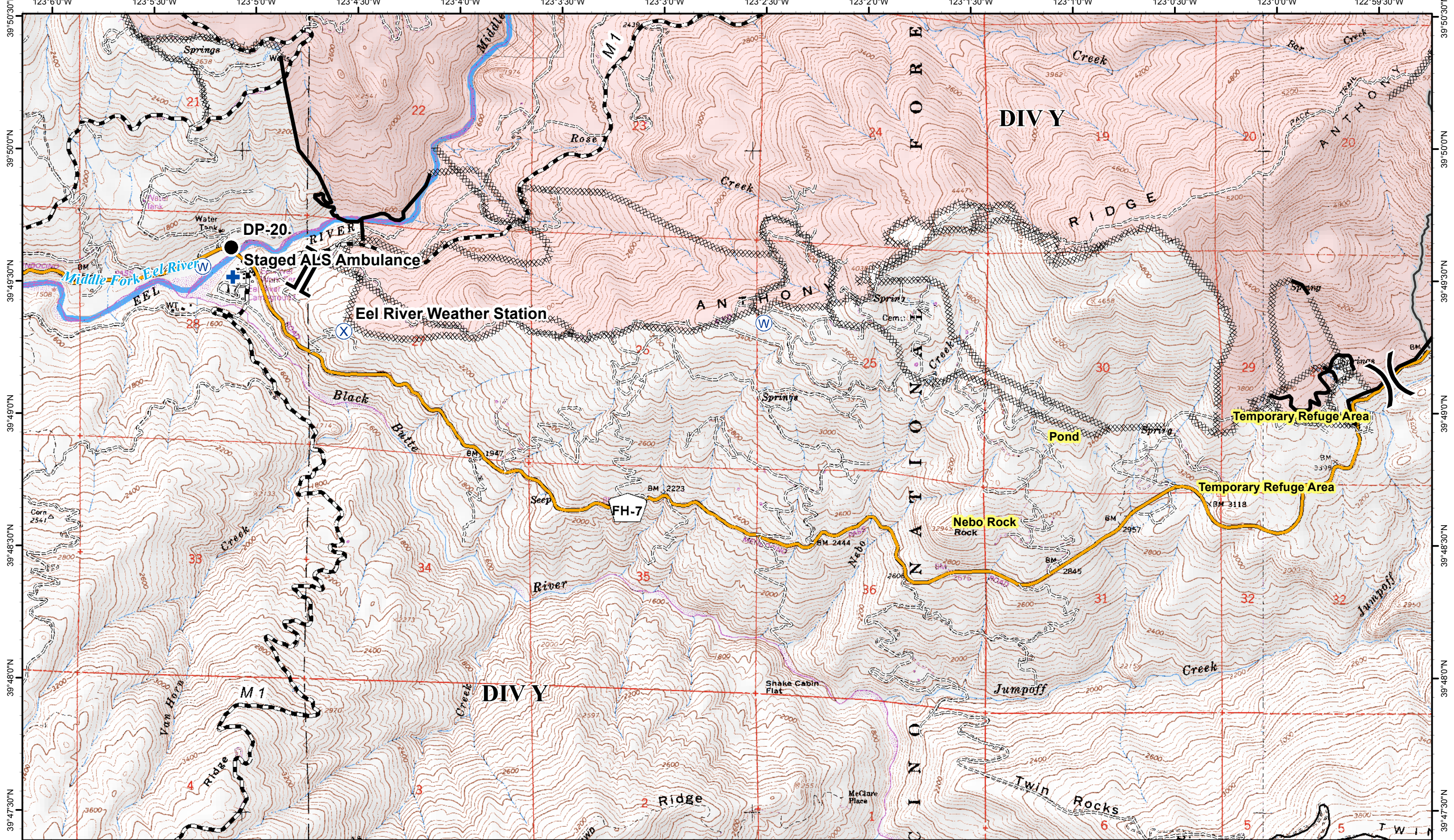
IAP Map
 September 6, 2012
 SoCal Team 1 20120905 2127

Page 8
 NAD 83, UTM Zone 10
 CONTOUR INTERVAL 40 FEET

- | | | | | | |
|---------------|-----------------------------|-----------------------|---------------------------|------------------------|------------------|
| (X) Division | (—) Uncontrolled Fire Edge | (C) Camp | (●) Helispot | (X) Mobil Weather Unit | (●) Spot Fire |
| () Branch | (—) Controlled Line | (●) Drop Point | (■) Incident Command Post | (R) Repeater | (W) Water Source |
| (♦) DeadEnd | (- - -) Completed Line | (+) First Aid Station | (■) Lookout | (▲) Safety Zone | (□) Cabin |
| (⚡) Equipment | (XXXX) Completed Dozer Line | (H) Helibase | (+) MediVac Site | (□) Wilderness | |
| | (—) Hand Line | | | | |

Miles
 0 0.5 1

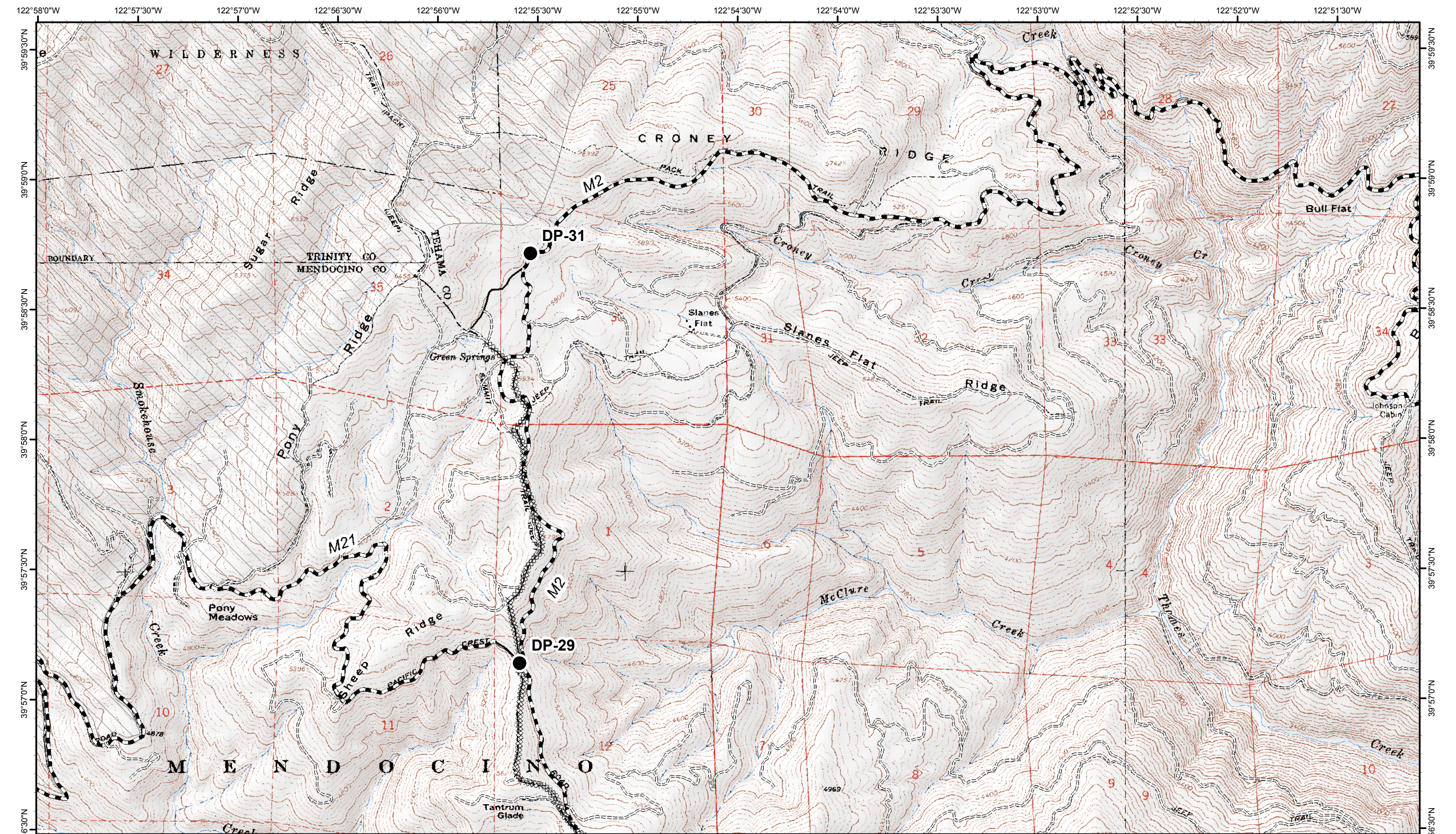
North Pass Fire
CA-MNF-1446



- | | | | | | | | | | | | |
|------|-----------|---------|------------------------|-----|-------------------|-----|-----------------------|-----|--------------------|-----|--------------|
| (X) | Division | (—) | Uncontrolled Fire Edge | (C) | Camp | (●) | Helispot | (X) | Mobil Weather Unit | (○) | Spot Fire |
| () | Branch | (—) | Controlled Line | (●) | Drop Point | (■) | Incident Command Post | (R) | Repeater | (W) | Water Source |
| (◆) | DeadEnd | (- - -) | Completed Line | (+) | First Aid Station | (R) | Lookout | (S) | Safety Zone | (□) | Cabin |
| (⚡) | Equipment | (XXXX) | Completed Dozer Line | (H) | Helibase | (+) | MediVac Site | (□) | Fire Area | (▨) | Wilderness |
| | | (—) | Hand Line | | | | | | | | |

Miles
 0 0.5 1

North Pass Fire
CA-MNF-1446



IAP Map
September 6, 2012

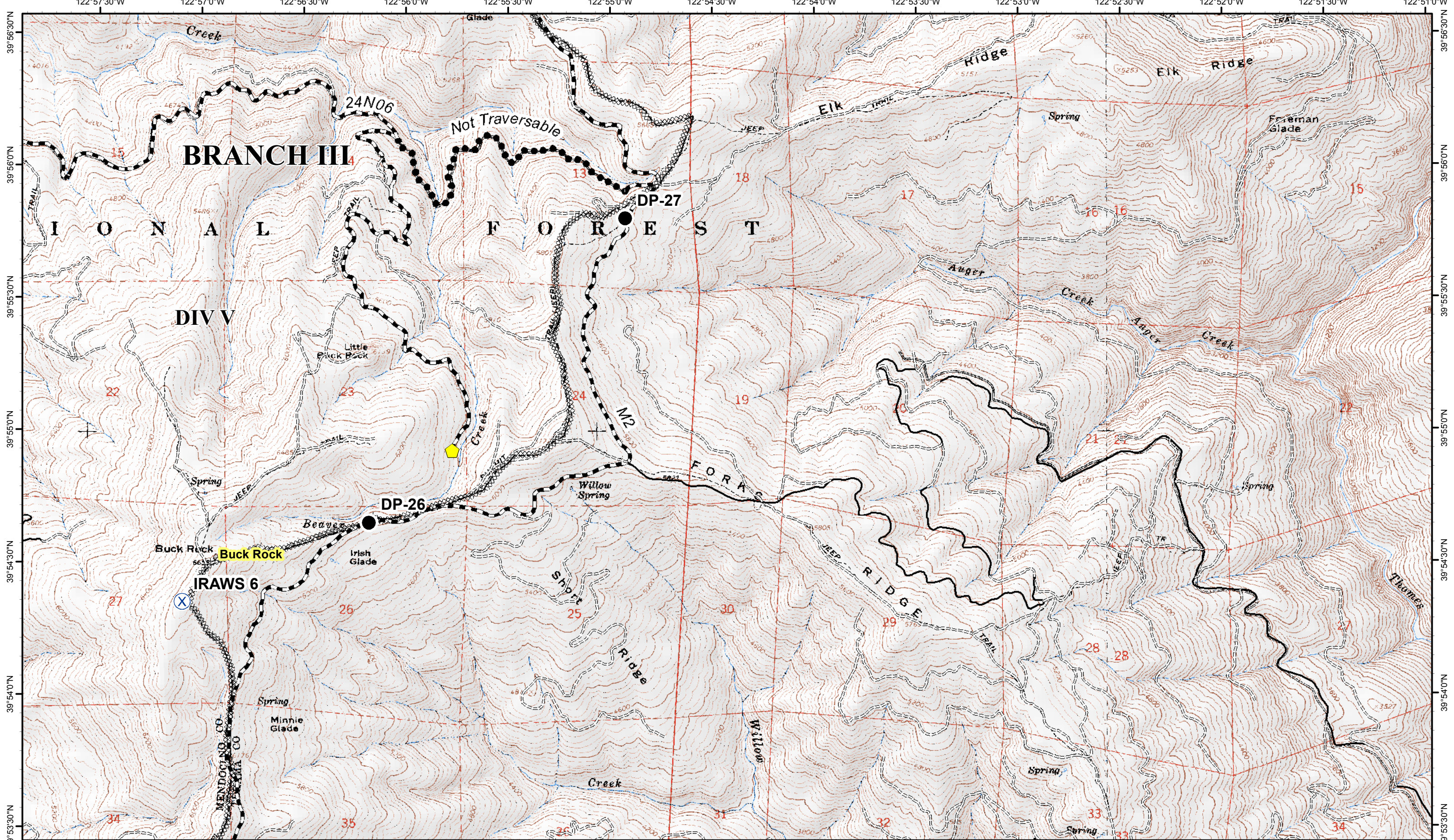
Page 10
NAD 83, UTM Zone 10
CONTOUR INTERVAL 40 FEET

SoCal Team 1 20120905 2127

- | | | | | | |
|---------------|-----------------------------|-----------------------|---------------------------|------------------------|------------------|
| (X) Division | (—) Uncontrolled Fire Edge | (C) Camp | (●) Helispot | (X) Mobil Weather Unit | (↑) Spot Fire |
| () Branch | (—) Controlled Line | (●) Drop Point | (▣) Incident Command Post | (R) Repeater | (W) Water Source |
| (♦) DeadEnd | (- - -) Completed Line | (+) First Aid Station | (▣) Lookout | (S) Safety Zone | (□) Cabin |
| (⚡) Equipment | (XXXX) Completed Dozer Line | (H) Helibase | (+) MediVac Site | (□) Fire Area | (▨) Wilderness |
| | (—) Hand Line | | | | |

Miles 0 0.5 1

North Pass Fire
CA-MNF-1446



IAP Map
September 6, 2012

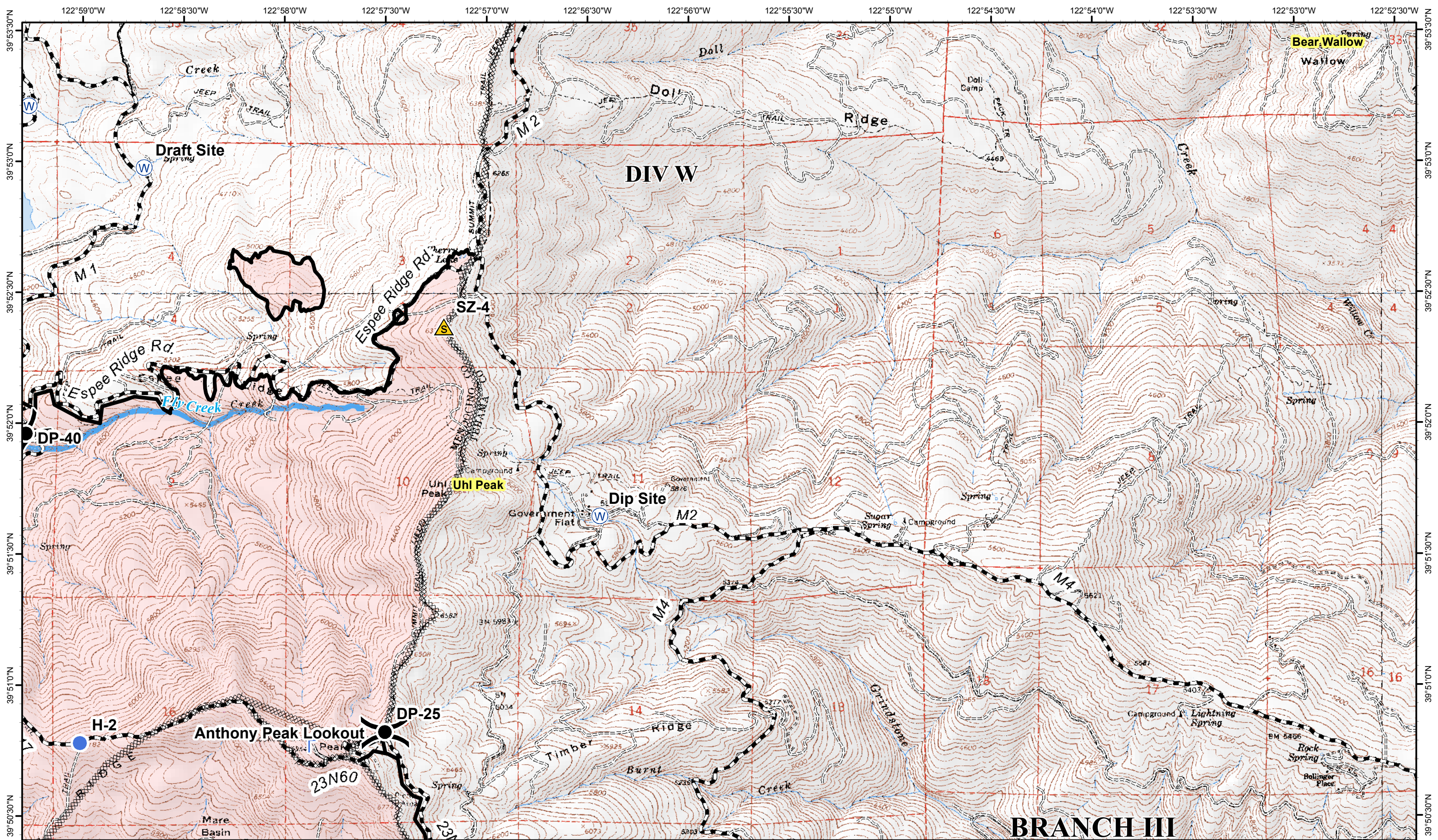
Page 11
NAD 83, UTM Zone 10
CONTOUR INTERVAL 40 FEET

SoCal Team 1 20120905 2127

- | | | | | | |
|---------------|------------------------|-----------------------|---------------------------|------------------------|------------------|
| (X) Division | Uncontrolled Fire Edge | (C) Camp | (●) Helispot | (X) Mobil Weather Unit | (●) Spot Fire |
| Branch | Controlled Line | (●) Drop Point | (■) Incident Command Post | (R) Repeater | (W) Water Source |
| (◆) DeadEnd | Completed Line | (+) First Aid Station | (■) Lookout | (S) Safety Zone | (□) Cabin |
| (◆) Equipment | Completed Dozer Line | (H) Helibase | (+) MediVac Site | (□) Wilderness | |
| | Hand Line | | | | |

Miles
0 0.5 1

North Pass Fire
CA-MNF-1446



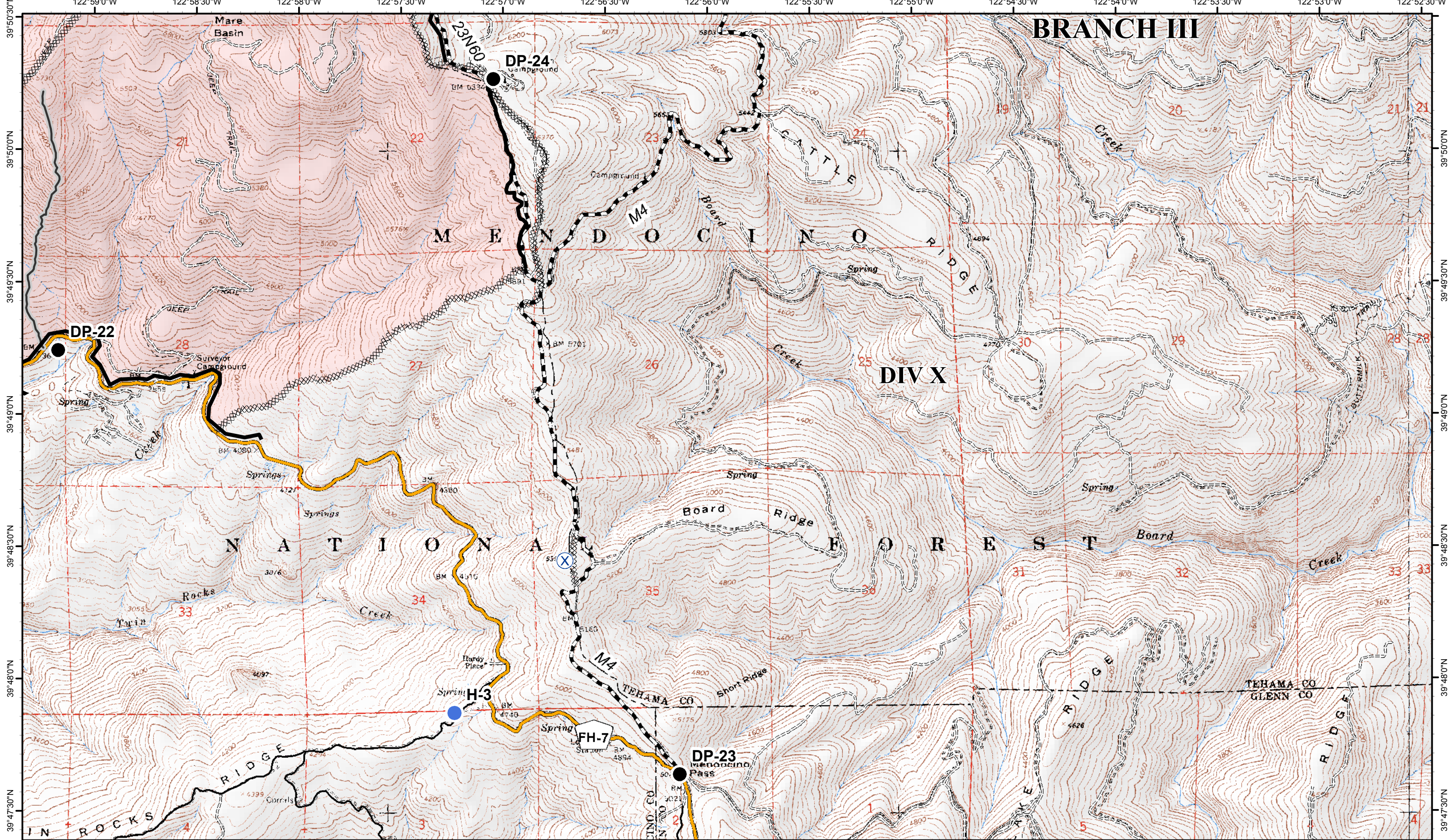
IAP Map
 September 6, 2012
 SoCal Team 1 20120905 2127

Page 12
 NAD 83, UTM Zone 10
 CONTOUR INTERVAL 40 FEET

- | | | | | | |
|---------------|-----------------------------|-----------------------|---------------------------|------------------------|------------------|
| (X) Division | (F) Uncontrolled Fire Edge | (C) Camp | (●) Helispot | (X) Mobil Weather Unit | (●) Spot Fire |
| () Branch | (—) Controlled Line | (●) Drop Point | (■) Incident Command Post | (R) Repeater | (W) Water Source |
| (▲) DeadEnd | (- - -) Completed Line | (+) First Aid Station | (L) Lookout | (S) Safety Zone | (□) Cabin |
| (⚡) Equipment | (XXXX) Completed Dozer Line | (H) Helibase | (+) MediVac Site | | (□) Fire Area |
| | (—) Hand Line | | | | (□) Wilderness |

Miles
 0 0.5 1

North Pass Fire
CA-MNF-1446



IAP Map
September 6, 2012

Page 13
NAD 83, UTM Zone 10
CONTOUR INTERVAL 40 FEET

SoCal Team 1 20120905 2127

- | | | | | | |
|---------------|-----------------------------|-----------------------|---------------------------|------------------------|------------------|
| (X) Division | (—) Uncontrolled Fire Edge | (C) Camp | (●) Helispot | (X) Mobil Weather Unit | (○) Spot Fire |
| () Branch | (—) Controlled Line | (●) Drop Point | (■) Incident Command Post | (R) Repeater | (W) Water Source |
| (◆) DeadEnd | (- -) Completed Line | (+) First Aid Station | (□) Lookout | (S) Safety Zone | (□) Cabin |
| (⚡) Equipment | (XXXX) Completed Dozer Line | (H) Helibase | (+) MediVac Site | (□) Wilderness | |
| | (—) Hand Line | | | | |

Miles
0 0.5 1

North Pass Fire
CA-MNF-1446