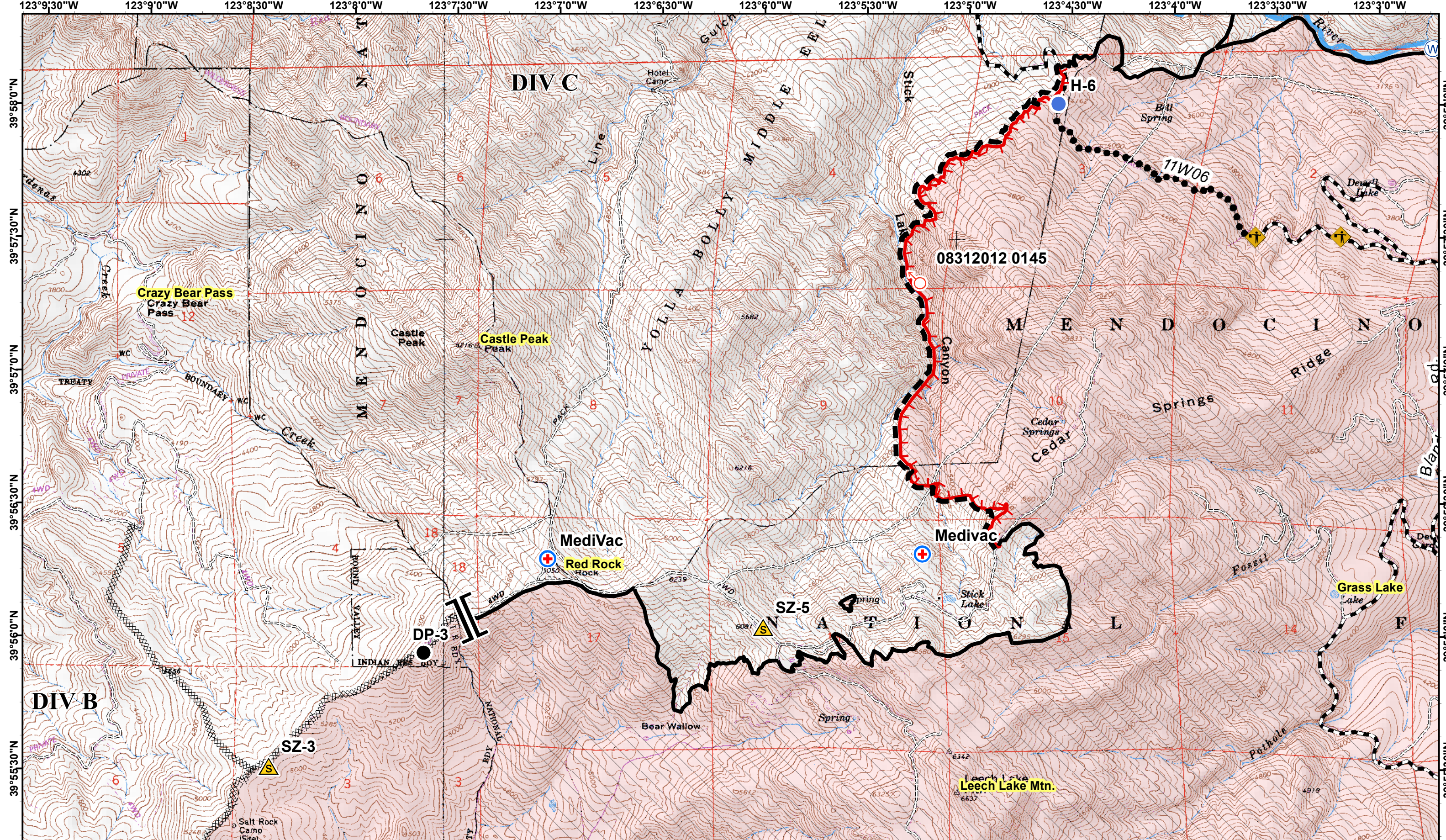


- |              |                        |                   |                       |                        |                  |
|--------------|------------------------|-------------------|-----------------------|------------------------|------------------|
| (X) Division | Uncontrolled Fire Edge | (C) Camp          | Helispot              | (X) Mobil Weather Unit | Spot Fire        |
| Branch       | Controlled Line        | Drop Point        | Incident Command Post | (R) Repeater           | (W) Water Source |
| DeadEnd      | Completed Line         | First Aid Station | Lookout               | Safety Zone            | Cabin            |
| Equipment    | Completed Dozer Line   | Helibase          | MediVac Site          |                        | Fire Area        |
|              | Hand Line              |                   |                       |                        | Wilderness       |

Miles  
0 0.5 1

**North Pass Fire**  
**CA-MNF-1446**





**IAP Map**  
September 7, 2012

**Page 2**  
NAD 83, UTM Zone 10  
CONTOUR INTERVAL 40 FEET

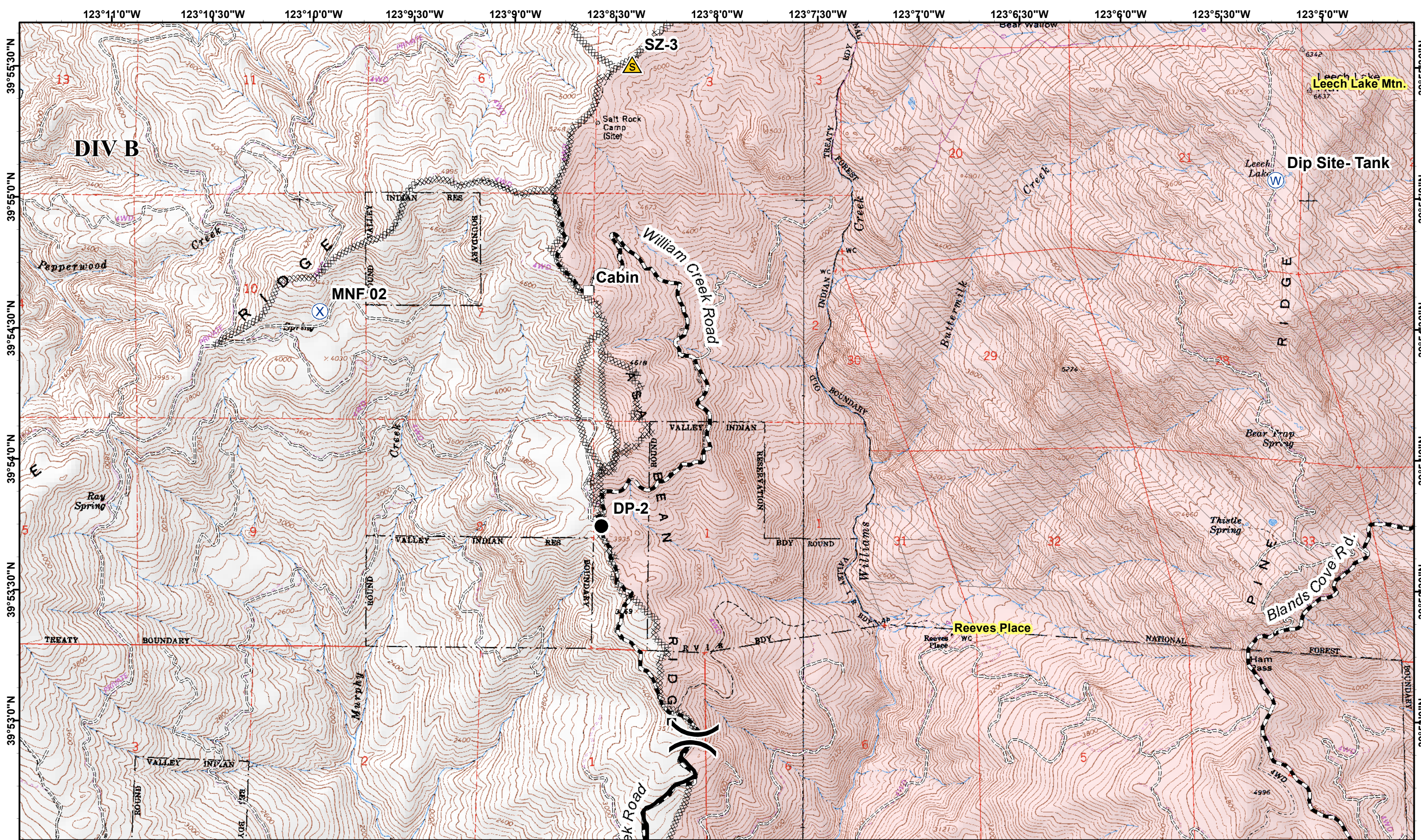
SoCal Team 1 20120906 2200

- |               |                            |                       |                           |                        |                  |
|---------------|----------------------------|-----------------------|---------------------------|------------------------|------------------|
| (X) Division  | — Uncontrolled Fire Edge   | (C) Camp              | (●) Helispot              | (X) Mobil Weather Unit | (↑) Spot Fire    |
| Branch        | — Controlled Line          | (●) Drop Point        | (■) Incident Command Post | (R) Repeater           | (W) Water Source |
| (▲) DeadEnd   | — Completed Line           | (+) First Aid Station | (■) Lookout               | (▲) Safety Zone        | (□) Cabin        |
| (⚡) Equipment | XXXXX Completed Dozer Line | (H) Helibase          | (+) MediVac Site          | (□) Wilderness         |                  |
|               | — Hand Line                |                       |                           |                        |                  |

Miles  
0 0.5 1

**North Pass Fire**  
**CA-MNF-1446**





**IAP Map**  
September 7, 2012

**Page 3**  
NAD 83, UTM Zone 10  
CONTOUR INTERVAL 40 FEET

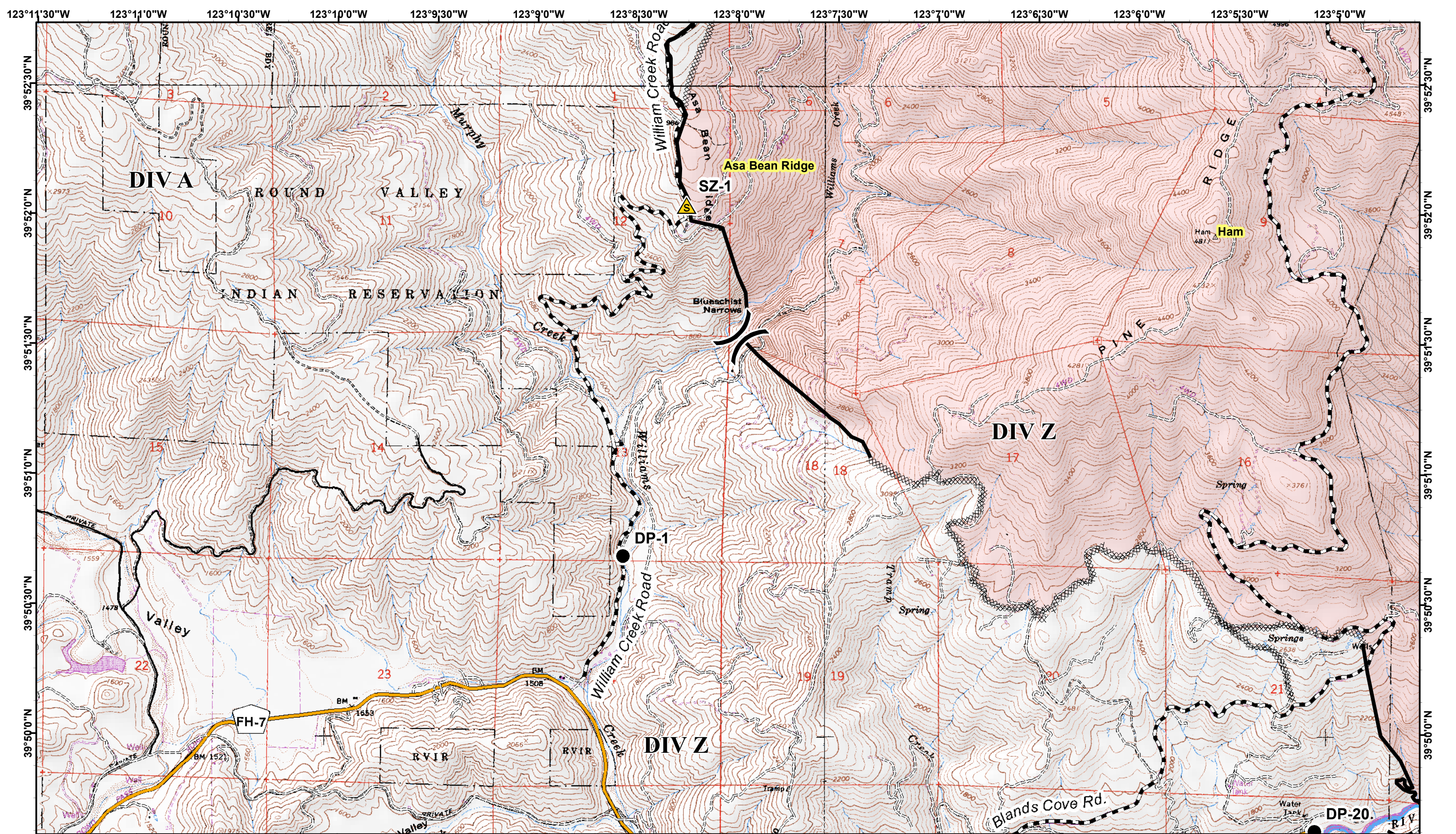
SoCal Team 1 20120906 2200

- |              |                        |                     |                       |                        |                  |
|--------------|------------------------|---------------------|-----------------------|------------------------|------------------|
| (X) Division | Uncontrolled Fire Edge | (C) Camp            | Helispot              | (X) Mobil Weather Unit | Spot Fire        |
| ┆┆ Branch    | Controlled Line        | ● Drop Point        | Incident Command Post | (R) Repeater           | (W) Water Source |
| ┆ DeadEnd    | Completed Line         | + First Aid Station | Lookout               | Safety Zone            | □ Cabin          |
| ┆ Equipment  | Completed Dozer Line   | (H) Helibase        | MediVac Site          | □ Fire Area            | ▨ Wilderness     |
|              | Hand Line              |                     |                       |                        |                  |

Miles  
0 0.5 1

**North Pass Fire**  
**CA-MNF-1446**



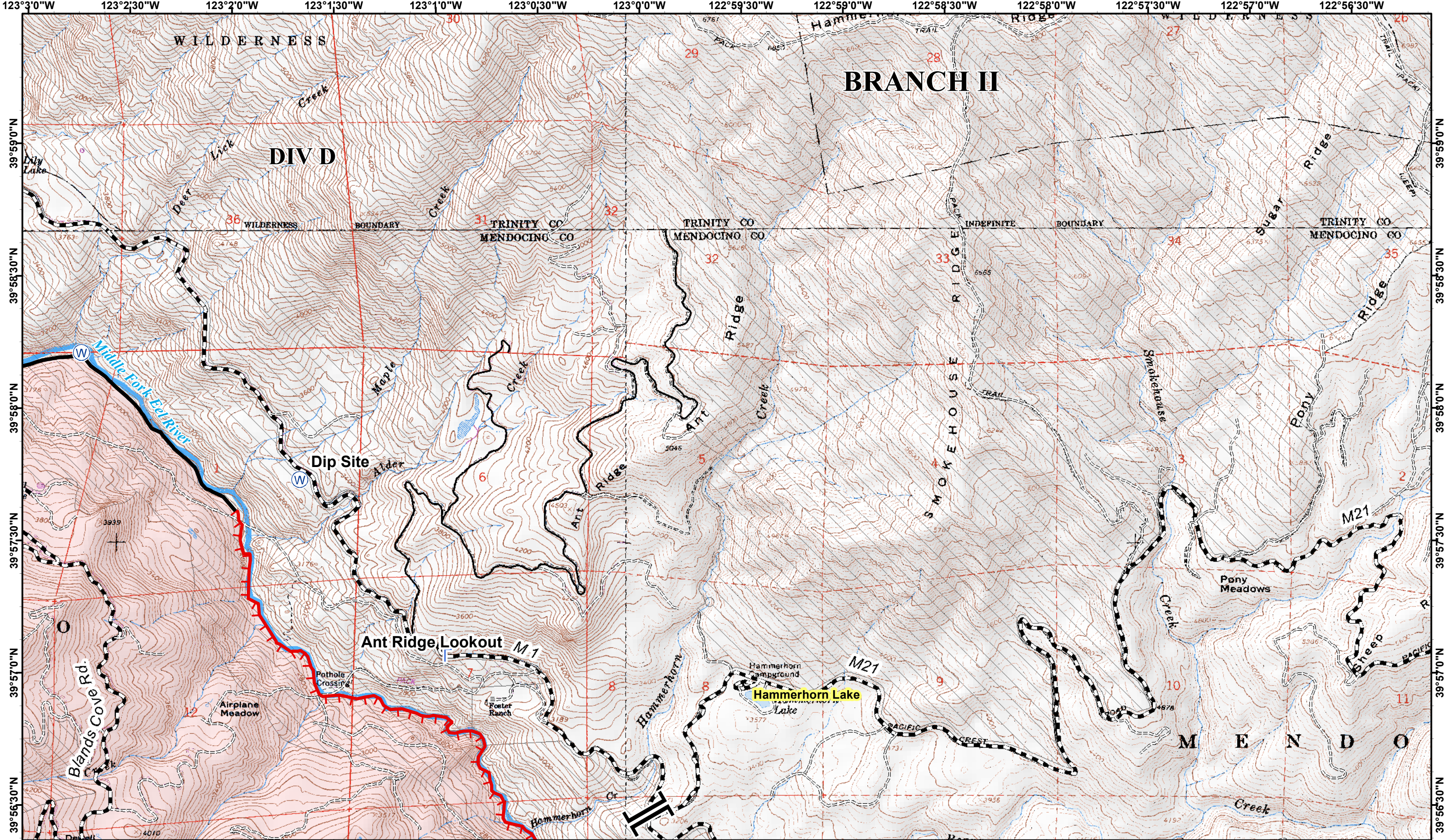


- |               |                             |                       |                           |                        |                  |
|---------------|-----------------------------|-----------------------|---------------------------|------------------------|------------------|
| (X) Division  | (—) Uncontrolled Fire Edge  | (C) Camp              | (●) Helispot              | (X) Mobil Weather Unit | (↑) Spot Fire    |
| ( ) Branch    | (—) Controlled Line         | (●) Drop Point        | (▣) Incident Command Post | (R) Repeater           | (W) Water Source |
| (◆) DeadEnd   | (- - -) Completed Line      | (+) First Aid Station | (▣) Lookout               | (▲) Safety Zone        | (□) Cabin        |
| (⚡) Equipment | (XXXX) Completed Dozer Line | (H) Helibase          | (+) MediVac Site          |                        | (■) Fire Area    |
|               | (—) Hand Line               |                       |                           |                        | (▨) Wilderness   |

Miles  
0 0.5 1

**North Pass Fire**  
**CA-MNF-1446**





**IAP Map**  
September 7, 2012

**Page 5**  
NAD 83, UTM Zone 10  
CONTOUR INTERVAL 40 FEET

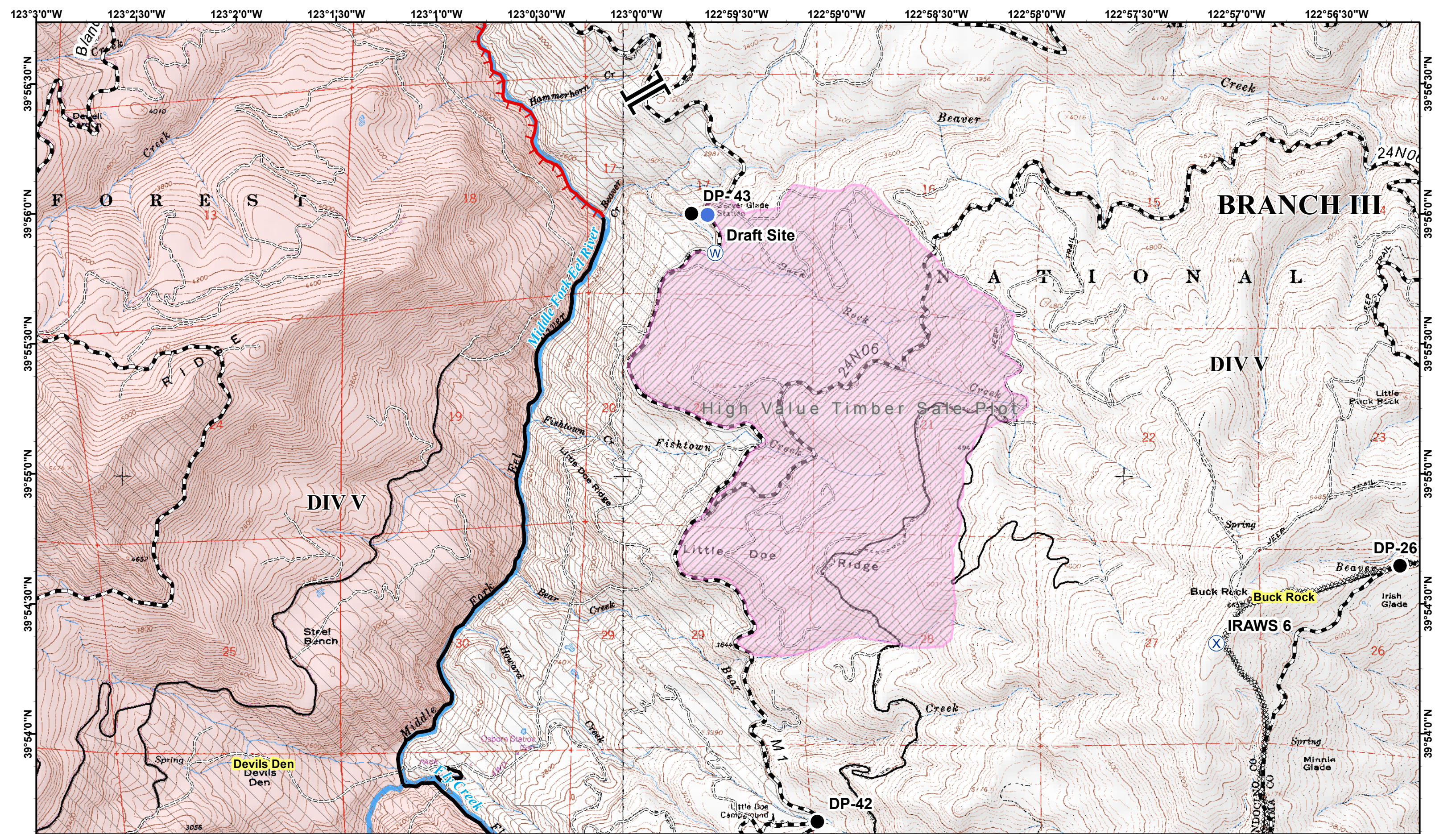
SoCal Team 1 20120906 2200

- |              |                            |                     |                         |                        |                  |
|--------------|----------------------------|---------------------|-------------------------|------------------------|------------------|
| (X) Division | — Uncontrolled Fire Edge   | (C) Camp            | ● Helispot              | (X) Mobil Weather Unit | ↑ Spot Fire      |
| Branch       | — Controlled Line          | ● Drop Point        | ▣ Incident Command Post | (R) Repeater           | (W) Water Source |
| ◆ DeadEnd    | — Completed Line           | + First Aid Station | — Lookout               | ▲ Safety Zone          | □ Cabin          |
| ⚠ Equipment  | XXXXX Completed Dozer Line | (H) Helibase        | ⊕ MediVac Site          | □ Fire Area            | ▨ Wilderness     |
|              | — Hand Line                |                     |                         |                        |                  |

Miles  
0 0.5 1

**North Pass Fire**  
**CA-MNF-1446**





**IAP Map**  
September 7, 2012

**Page 6**  
NAD 83, UTM Zone 10  
CONTOUR INTERVAL 40 FEET

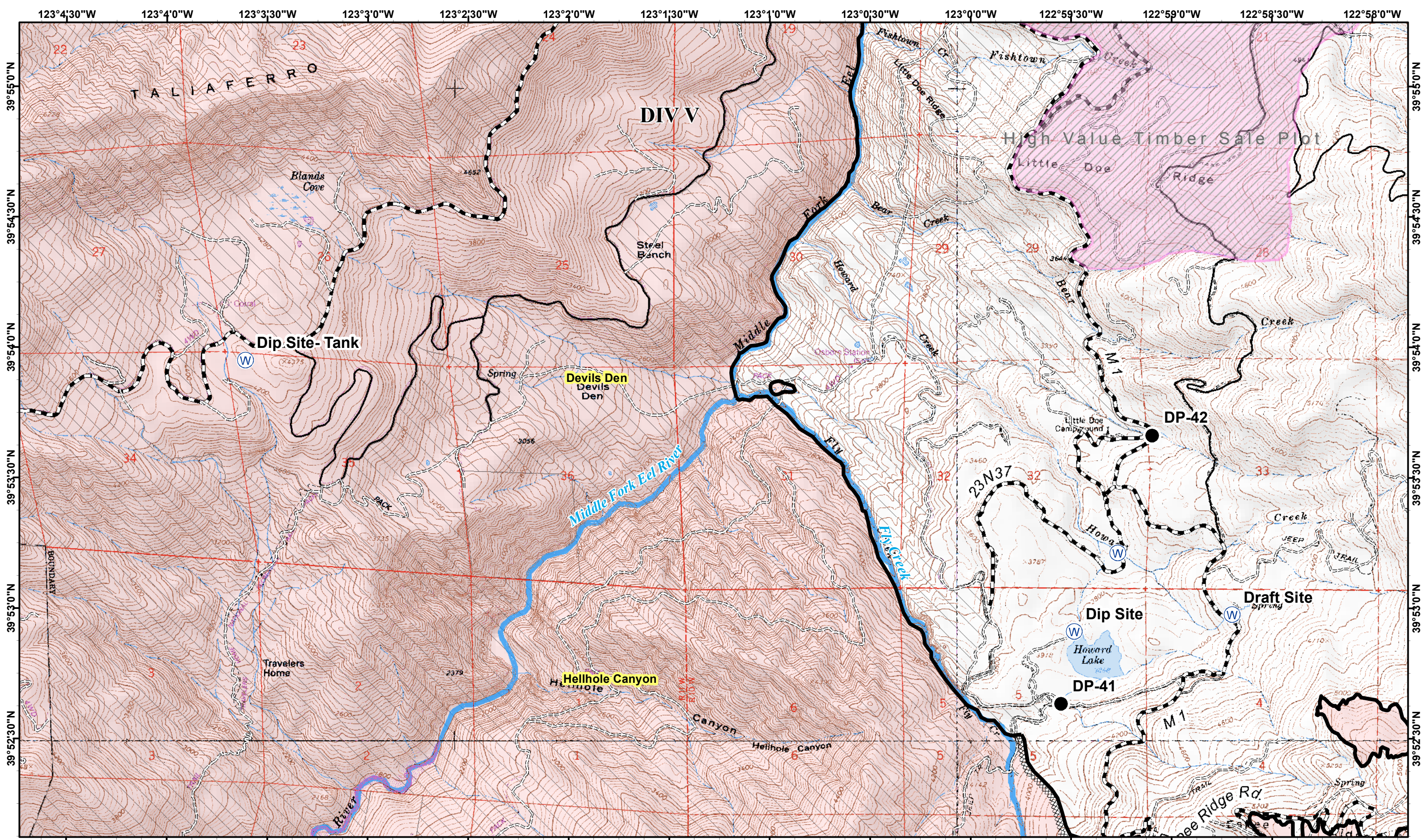
SoCal Team 1 20120906 2200

- |              |                            |                       |                           |                        |                  |
|--------------|----------------------------|-----------------------|---------------------------|------------------------|------------------|
| (X) Division | — Uncontrolled Fire Edge   | (C) Camp              | (●) Helispot              | (X) Mobil Weather Unit | (↑) Spot Fire    |
| Branch       | — Controlled Line          | (●) Drop Point        | (■) Incident Command Post | (R) Repeater           | (W) Water Source |
| ◆ Dead End   | — Completed Line           | (+) First Aid Station | (■) Lookout               | (□) Cabin              | (■) Fire Area    |
| ⚠ Equipment  | XXXXX Completed Dozer Line | (H) Helibase          | (+S) Safety Zone          | (□) Wilderness         |                  |
|              | — Hand Line                |                       | (+) MediVac Site          |                        |                  |

Miles  
0 0.5 1

**North Pass Fire**  
**CA-MNF-1446**





**IAP Map**  
September 7, 2012

**Page 7**  
NAD 83, UTM Zone 10  
CONTOUR INTERVAL 40 FEET

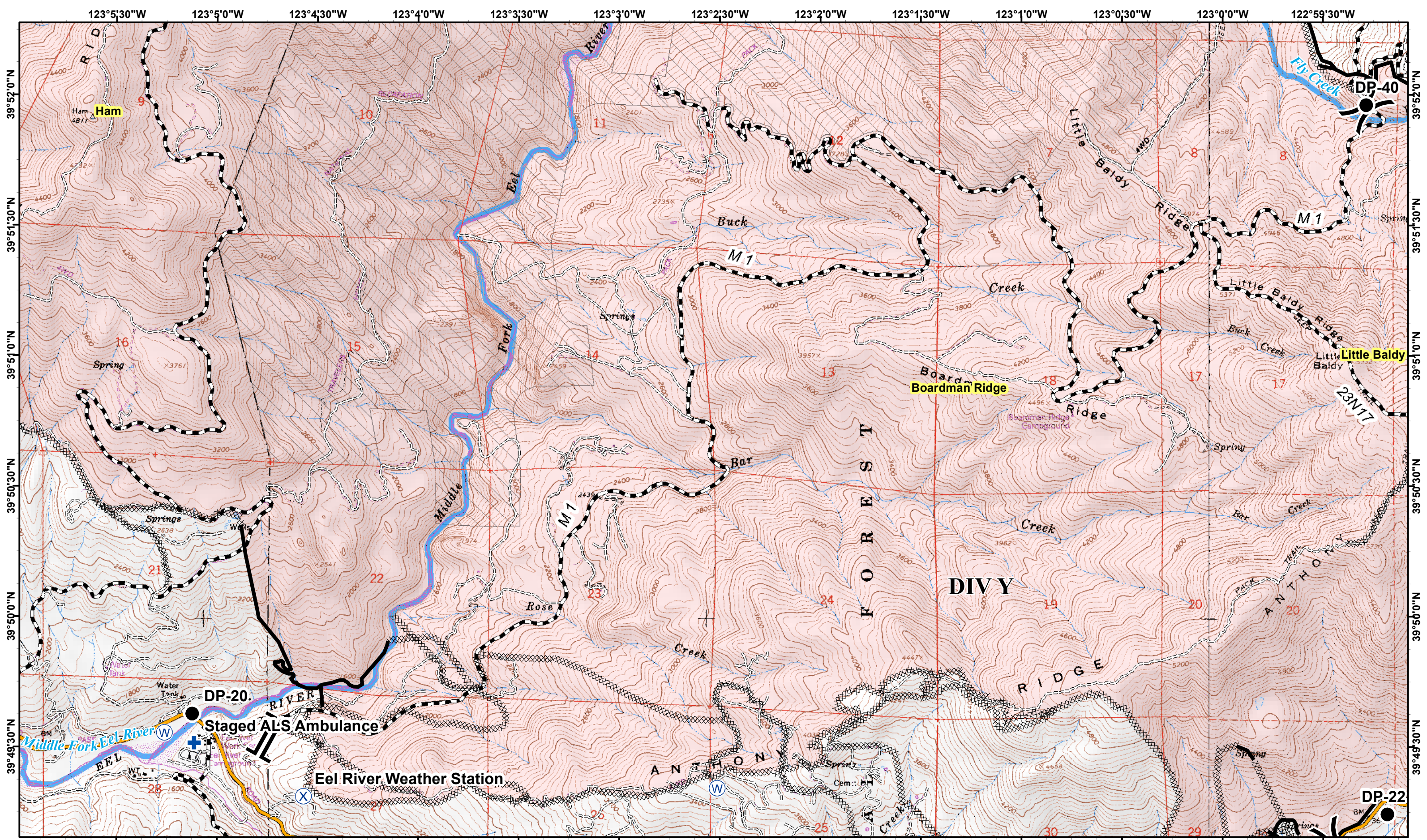
SoCal Team 1 20120906 2200

- |              |                            |                     |                         |                        |                  |
|--------------|----------------------------|---------------------|-------------------------|------------------------|------------------|
| (X) Division | Uncontrolled Fire Edge     | (C) Camp            | ● Helispot              | (X) Mobil Weather Unit | ↑ Spot Fire      |
| ┆┆ Branch    | — Controlled Line          | ● Drop Point        | ▣ Incident Command Post | (R) Repeater           | (W) Water Source |
| ◆ Dead End   | - - - Completed Line       | + First Aid Station | ▣ Lookout               | ⚠ Safety Zone          | □ Cabin          |
| ⚠ Equipment  | XXXXX Completed Dozer Line | (H) Helibase        | ⊕ MediVac Site          | □ Fire Area            | ▨ Wilderness     |
|              | — Hand Line                |                     |                         |                        |                  |

Miles  
0 0.5 1

**North Pass Fire**  
**CA-MNF-1446**



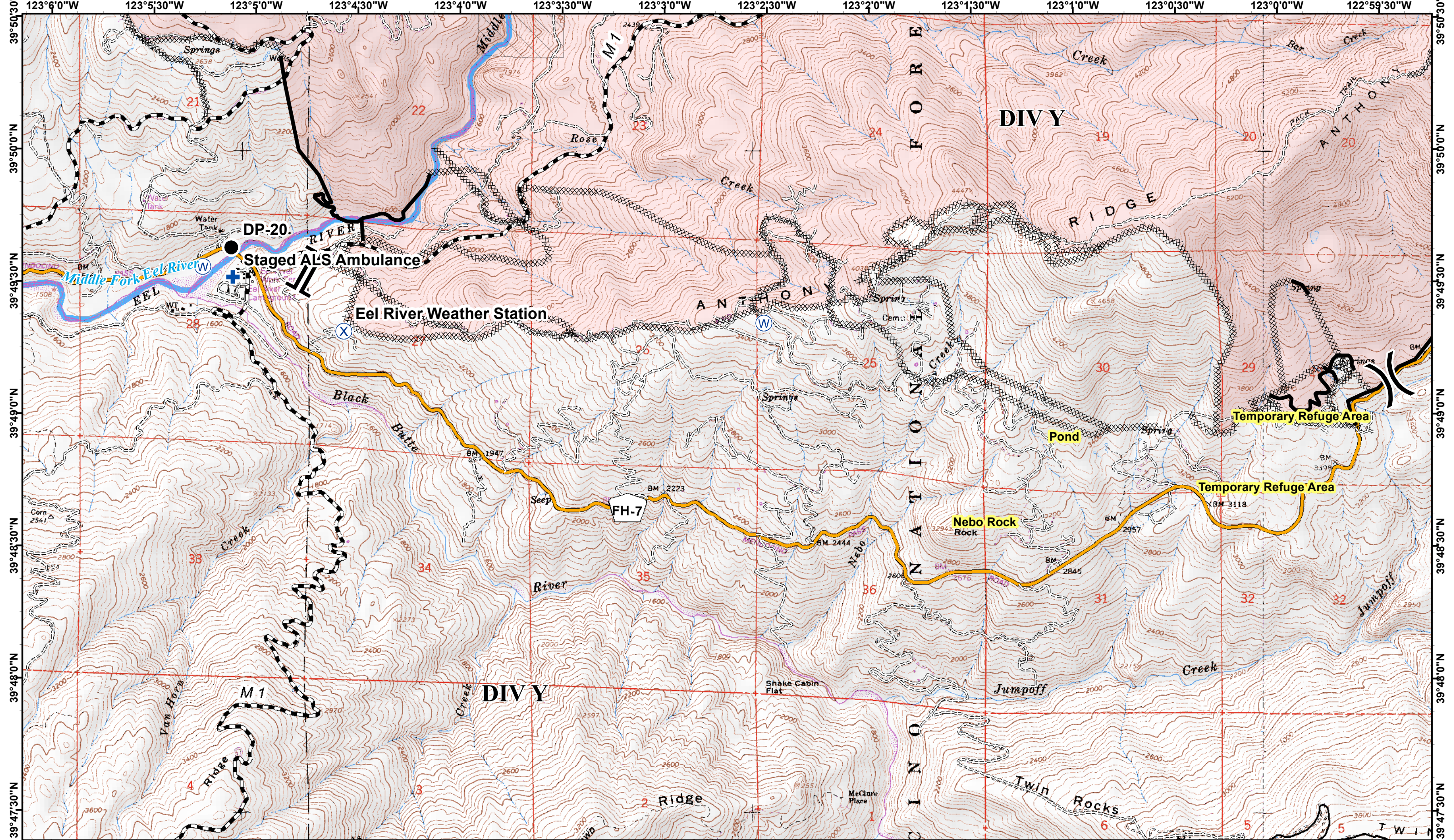


- |               |                        |                       |                           |                        |                  |
|---------------|------------------------|-----------------------|---------------------------|------------------------|------------------|
| (X) Division  | Uncontrolled Fire Edge | (C) Camp              | (●) Helispot              | (X) Mobil Weather Unit | (↑) Spot Fire    |
| ( ) Branch    | Controlled Line        | (●) Drop Point        | (■) Incident Command Post | (R) Repeater           | (W) Water Source |
| (♦) DeadEnd   | Completed Line         | (+) First Aid Station | (■) Lookout               | (▲) Safety Zone        | (□) Cabin        |
| (⚡) Equipment | Completed Dozer Line   | (H) Helibase          | (+) MediVac Site          | (■) Wilderness         |                  |
|               | Hand Line              |                       |                           |                        |                  |

Miles  
 0 0.5 1

**North Pass Fire**  
**CA-MNF-1446**



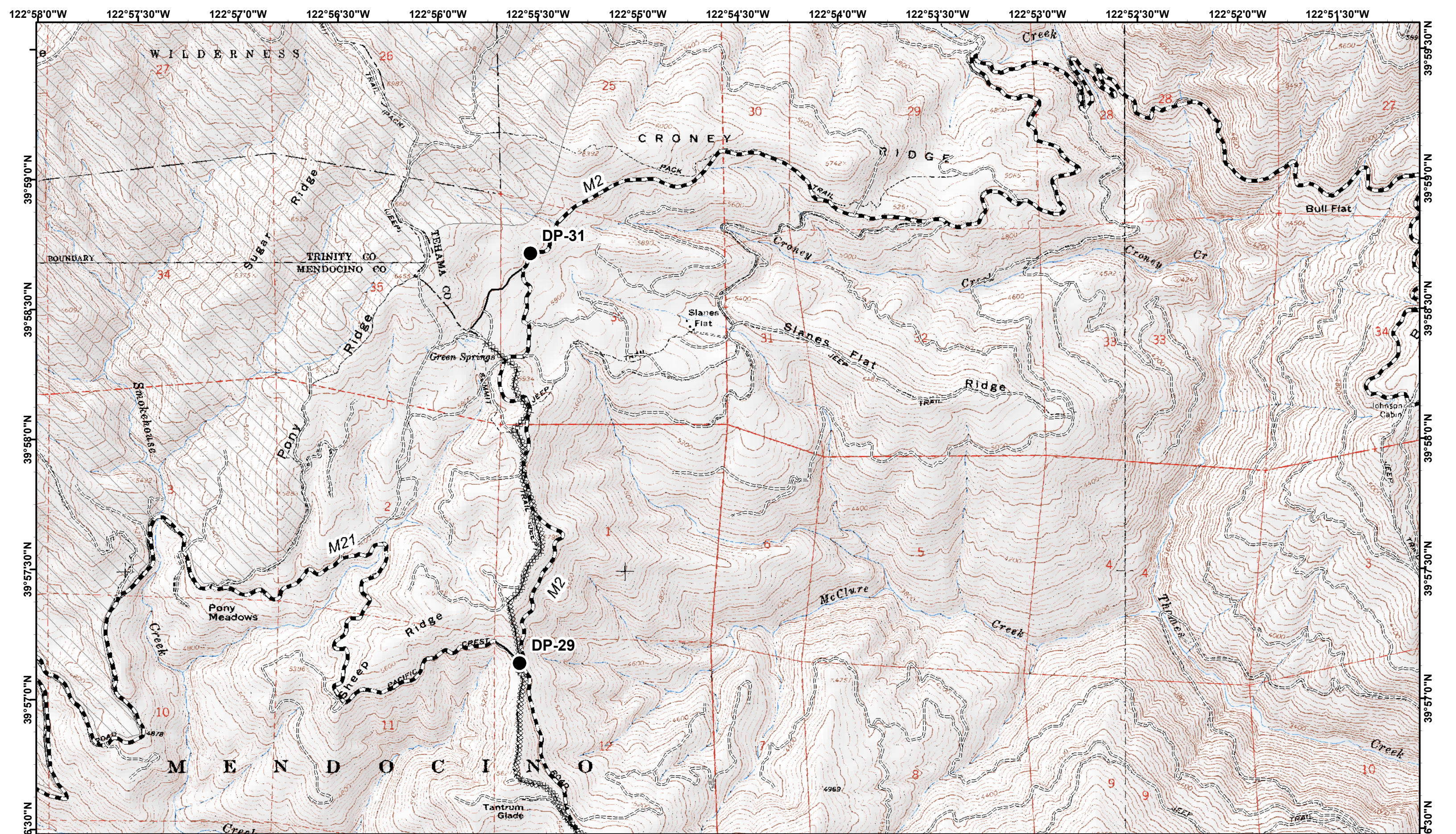


- |      |           |         |                        |     |                   |     |                       |     |                    |     |              |
|------|-----------|---------|------------------------|-----|-------------------|-----|-----------------------|-----|--------------------|-----|--------------|
| (X)  | Division  | (—)     | Uncontrolled Fire Edge | (C) | Camp              | (●) | Helispot              | (X) | Mobil Weather Unit | (↑) | Spot Fire    |
| (  ) | Branch    | (—)     | Controlled Line        | (●) | Drop Point        | (■) | Incident Command Post | (■) | Repeater           | (W) | Water Source |
| (◆)  | DeadEnd   | (- - -) | Completed Line         | (+) | First Aid Station | (■) | Lookout               | (S) | Safety Zone        | (□) | Cabin        |
| (⚡)  | Equipment | (XXXXX) | Completed Dozer Line   | (H) | Helibase          | (+) | MediVac Site          | (□) | Fire Area          | (□) | Wilderness   |
|      |           | (—)     | Hand Line              |     |                   |     |                       |     |                    |     |              |

Miles  
0 0.5 1

**North Pass Fire**  
**CA-MNF-1446**





**IAP Map**  
September 7, 2012

**Page 10**  
NAD 83, UTM Zone 10  
CONTOUR INTERVAL 40 FEET

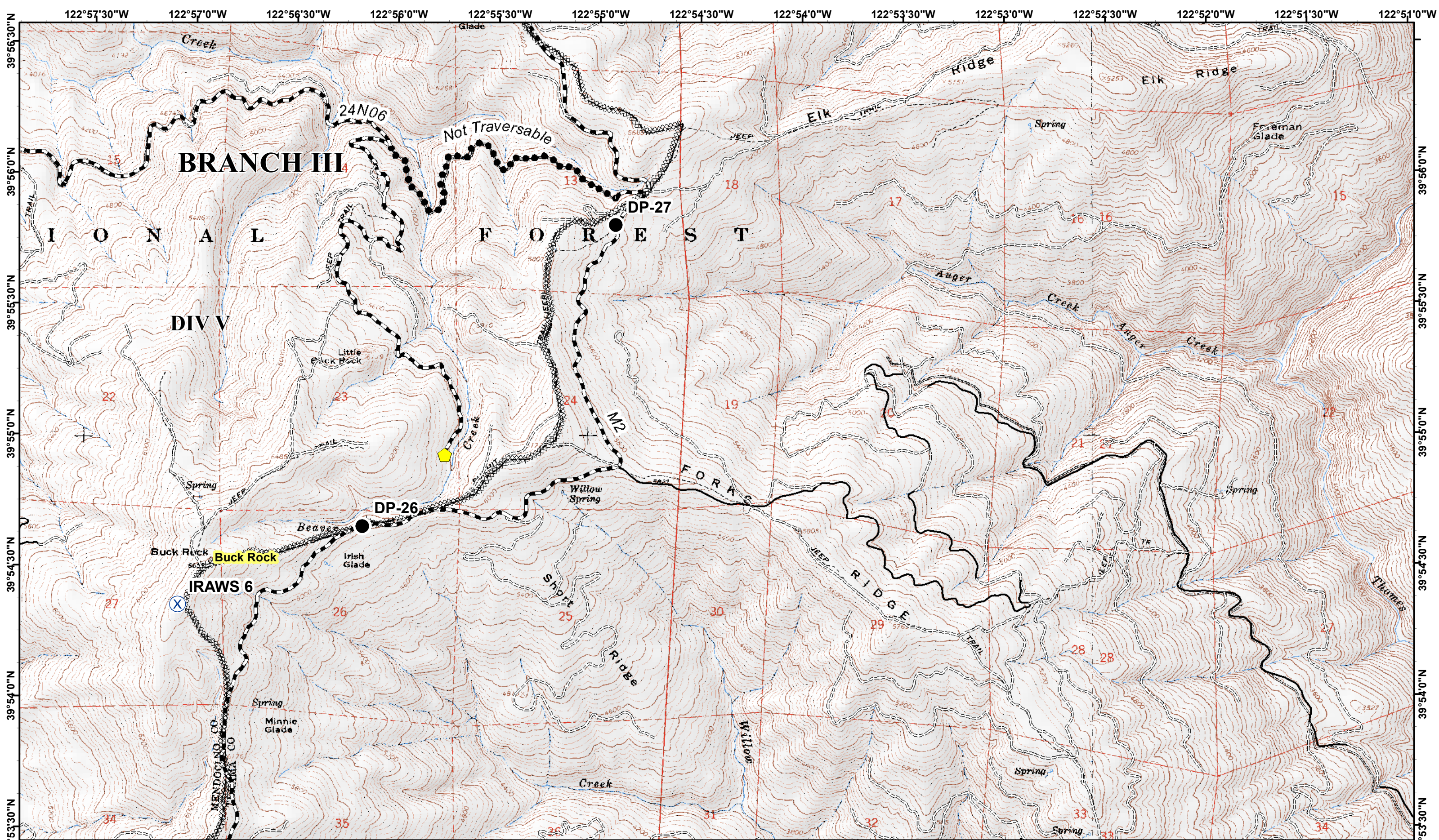
SoCal Team 1 20120906 2200

- |              |                        |                     |                       |                        |                  |
|--------------|------------------------|---------------------|-----------------------|------------------------|------------------|
| (X) Division | Uncontrolled Fire Edge | (C) Camp            | Helispot              | (X) Mobil Weather Unit | Spot Fire        |
| ┆┆ Branch    | Controlled Line        | ● Drop Point        | Incident Command Post | (R) Repeater           | (W) Water Source |
| ◆ DeadEnd    | Completed Line         | + First Aid Station | Lookout               | ⚠ Safety Zone          | □ Cabin          |
| ⚡ Equipment  | Completed Dozer Line   | (H) Helibase        | MediVac Site          | ▭ Fire Area            | ▨ Wilderness     |
|              | Hand Line              |                     |                       |                        |                  |

Miles  
0 0.5 1

**North Pass Fire**  
**CA-MNF-1446**





**IAP Map**  
September 7, 2012

**Page 11**

NAD 83, UTM Zone 10  
CONTOUR INTERVAL 40 FEET

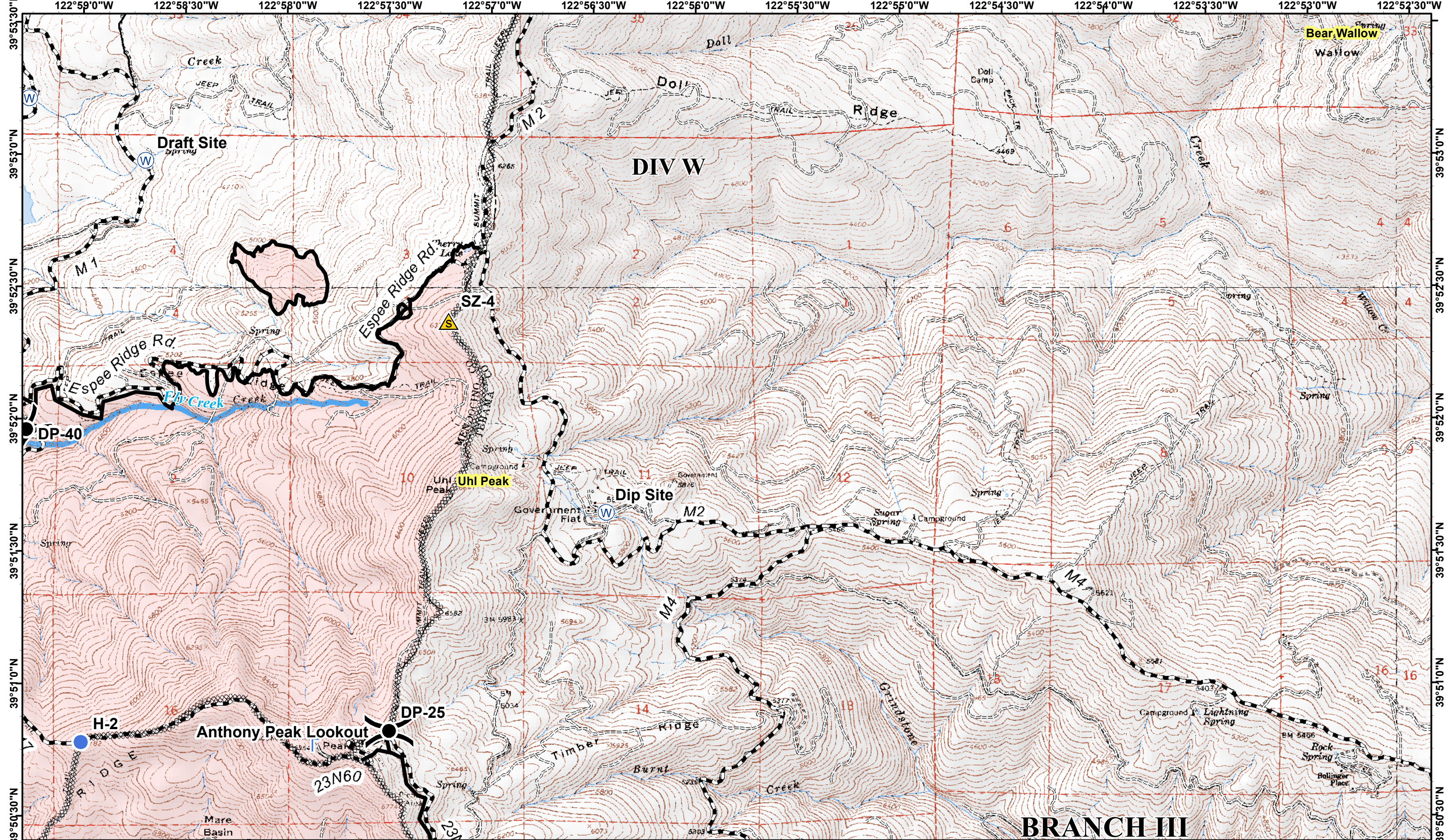
SoCal Team 1 20120906 2200

- |               |                        |                       |                           |                        |                  |
|---------------|------------------------|-----------------------|---------------------------|------------------------|------------------|
| (X) Division  | Uncontrolled Fire Edge | (C) Camp              | (●) Helispot              | (X) Mobil Weather Unit | (↑) Spot Fire    |
| (  ) Branch   | Controlled Line        | (●) Drop Point        | (■) Incident Command Post | (R) Repeater           | (W) Water Source |
| (◆) DeadEnd   | Completed Line         | (+) First Aid Station | (■) Lookout               | (S) Safety Zone        | (□) Cabin        |
| (⚠) Equipment | Completed Dozer Line   | (H) Helibase          | (+) MediVac Site          | (□) Fire Area          | (□) Wilderness   |
|               | Hand Line              |                       |                           |                        |                  |

Miles  
0 0.5 1

**North Pass Fire**  
**CA-MNF-1446**





**IAP Map**  
September 7, 2012

**Page 12**  
NAD 83, UTM Zone 10  
CONTOUR INTERVAL 40 FEET

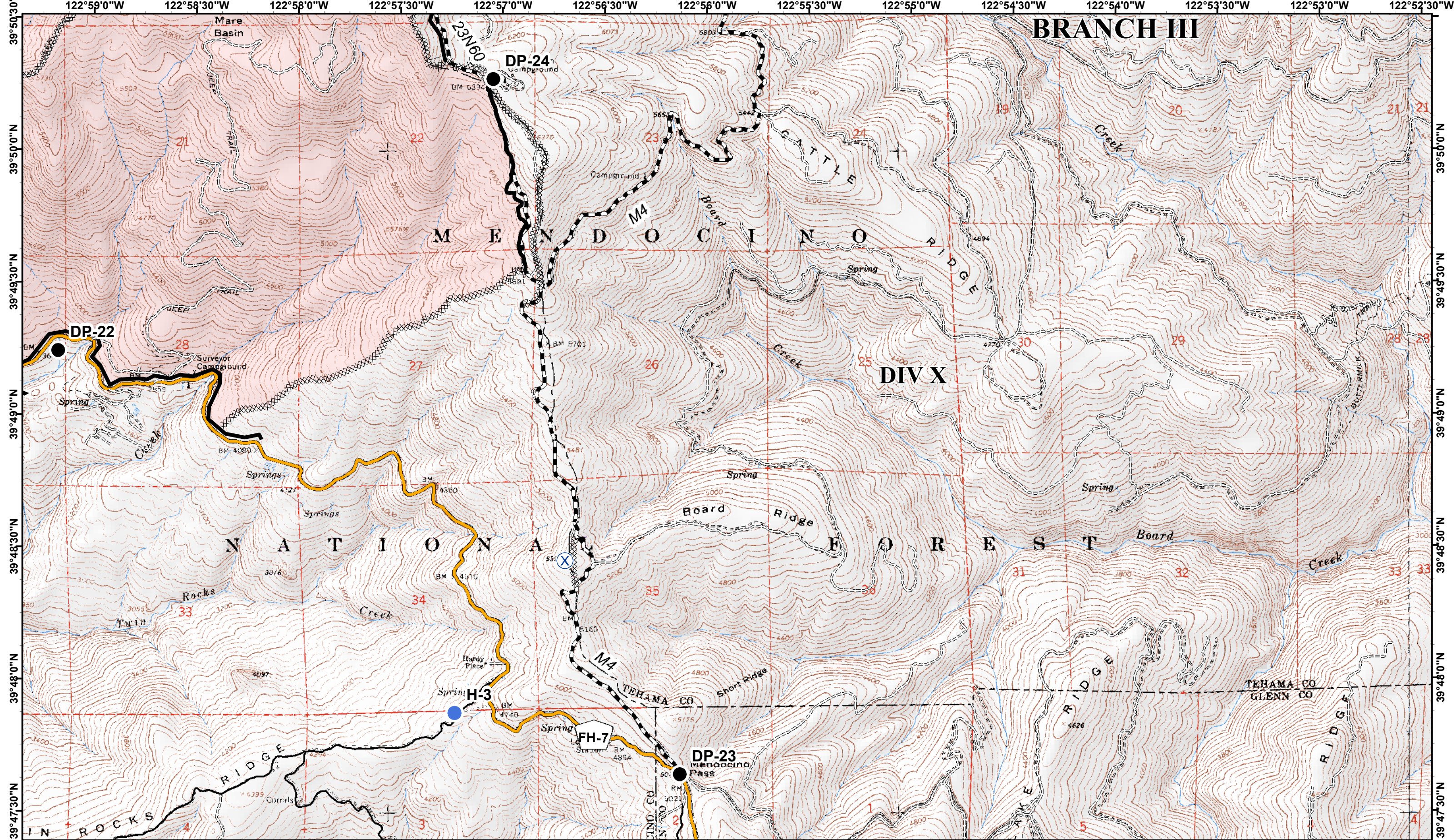
SoCal Team 1 20120906 2200

- |               |                             |                       |                           |                        |                  |
|---------------|-----------------------------|-----------------------|---------------------------|------------------------|------------------|
| (X) Division  | (—) Uncontrolled Fire Edge  | (C) Camp              | (●) Helispot              | (X) Mobil Weather Unit | (↑) Spot Fire    |
| (  ) Branch   | (—) Controlled Line         | (●) Drop Point        | (■) Incident Command Post | (R) Repeater           | (W) Water Source |
| (◆) DeadEnd   | (- -) Completed Line        | (+) First Aid Station | (L) Lookout               | (S) Safety Zone        | (□) Cabin        |
| (⚠) Equipment | (XXXX) Completed Dozer Line | (H) Helibase          | (+) MediVac Site          | (□) Wilderness         |                  |
|               | (—) Hand Line               |                       |                           |                        |                  |

Miles  
0 0.5 1

**North Pass Fire**  
**CA-MNF-1446**





**IAP Map**  
September 7, 2012

**Page 13**  
NAD 83, UTM Zone 10  
CONTOUR INTERVAL 40 FEET

SoCal Team 1 20120906 2200

- |               |                             |                       |                           |                        |                  |
|---------------|-----------------------------|-----------------------|---------------------------|------------------------|------------------|
| (X) Division  | (—) Uncontrolled Fire Edge  | (C) Camp              | (●) Helispot              | (X) Mobil Weather Unit | (↑) Spot Fire    |
| (  ) Branch   | (—) Controlled Line         | (●) Drop Point        | (■) Incident Command Post | (R) Repeater           | (W) Water Source |
| (◆) DeadEnd   | (- -) Completed Line        | (+) First Aid Station | (□) Lookout               | (S) Safety Zone        | (□) Cabin        |
| (⚠) Equipment | (XXXX) Completed Dozer Line | (H) Helibase          | (+)                       | (+)                    | (■) Fire Area    |
|               | (—) Hand Line               |                       |                           |                        | (□) Wilderness   |

Miles  
0 0.5 1

**North Pass Fire**  
**CA-MNF-1446**