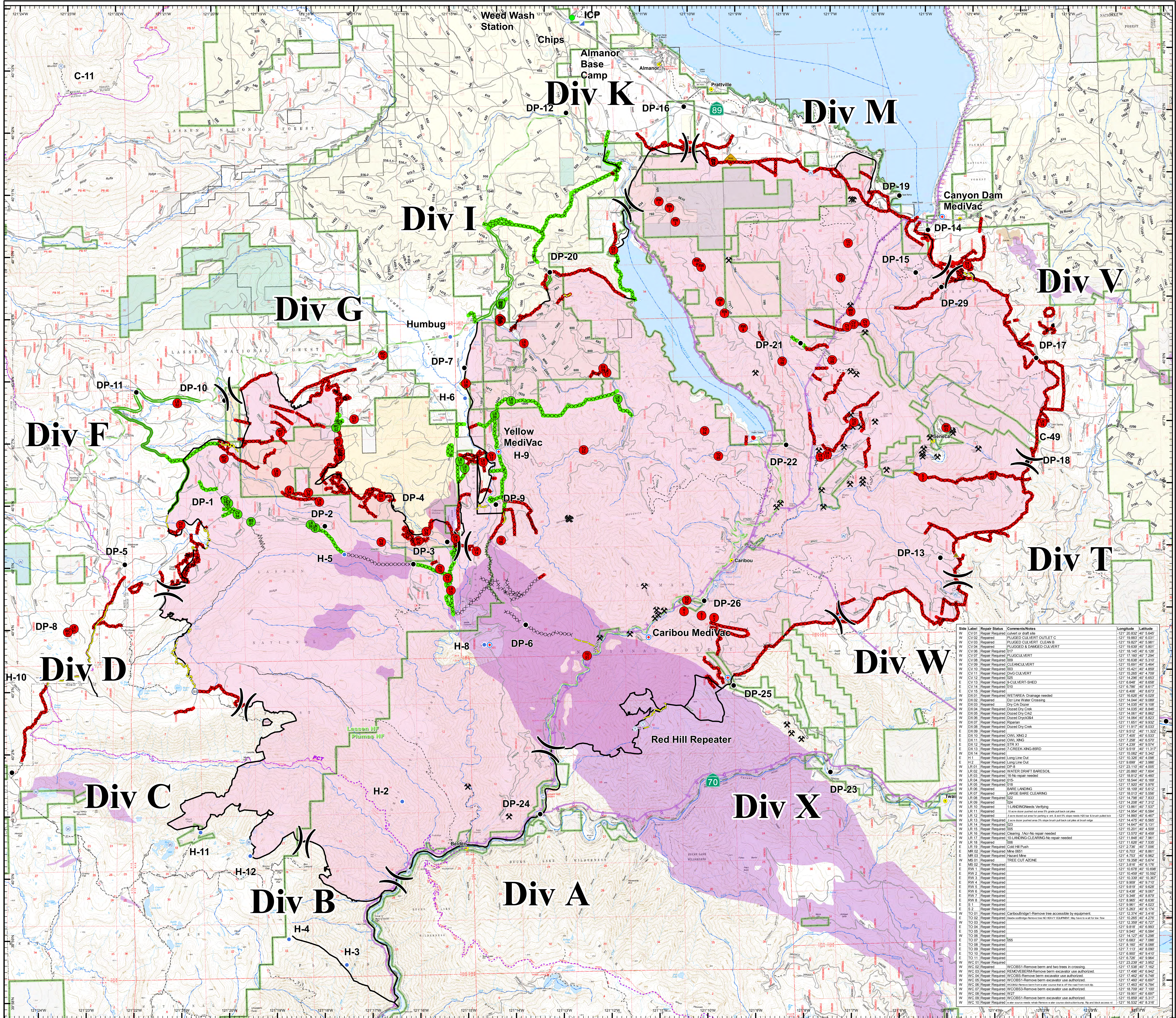


Chips Fire
CA-PNF-001001
 Approx. 75,217 acres
Suppression
Repair Map
 Sept. 4, 2012

- Bedrock Serpentine**
 Suppression Repair Pts.
 ● Repair Required
 ● Repaired
Road Repair
 Needs Chipping
 Repaired
Dozer Line Repair
 Repair Required
 Repaired
 Hand Line for Repair
 Completed Dozer Line
 Completed Line
Water Source
 Safety Zone
 Staging Area
 Sling Site
 Camp
 Drop Point
 Helibase
 Helispot
 Incident Command Post
 MediVac Site
 Repeater
 Weed Wash Station
 Mine Hazard
 Powerlines
 Railroads

- Ownership**
 Beatty & Assoc.
 Collins Pine
 S.P.I.
 Private
 State
 USDA Forest Service

- Code** **Point Type**
 CV Culvert
 DW Dozer Wet Crossing
 DX Dozer Stream Crossing
 H Hose
 LR Landing Repair
 MS Miscellaneous
 TO Tree Obstruction
 RW Root Wad
 WC Water Course Obstruction



Side	Label	Repair Status	Comments/Notes	Longitude	Latitude
W	CV-01	Repaired	Culvert or draft line	121° 20' 832.40"	40° 0' 0.00"
W	CV-02	Repaired	PLUGGED CULVERT OUTLET G	121° 19' 802.40"	0' 0.00"
W	CV-03	Repaired	PLUGGED CULVERT CLEAN	121° 19' 827.40"	0' 0.00"
W	CV-04	Repaired	PLUGGED & DAMMED CULVERT	121° 19' 839.40"	0' 0.00"
W	CV-05	Repaired	PLUGGED CULVERT	121° 18' 145.40"	0' 0.20"
W	CV-06	Repaired	PLUGGED CULVERT	121° 17' 102.40"	0' 2.24"
W	CV-07	Repaired	PLUGGED CULVERT	121° 16' 639.40"	0' 5.31"
W	CV-08	Repaired	PLUGGED CULVERT	121° 15' 591.40"	0' 5.46"
W	CV-09	Repaired	PLUGGED CULVERT	121° 15' 421.40"	0' 4.89"
W	CV-10	Repaired	PLUGGED CULVERT	121° 15' 269.40"	0' 4.70"
W	CV-11	Repaired	DWG CULVERT	121° 14' 296.40"	0' 4.63"
E	CV-12	Repaired	DWG CULVERT	121° 13' 896.40"	0' 4.85"
E	CV-13	Repaired	DWG CULVERT	121° 12' 848.40"	0' 4.85"
E	CV-14	Repaired	DWG CULVERT	121° 12' 848.40"	0' 4.85"
E	CV-15	Repaired	DWG CULVERT	121° 12' 848.40"	0' 4.85"
W	DX-01	Repaired	DRY CRK	121° 18' 505.40"	0' 0.00"
W	DX-02	Repaired	DRY CRK	121° 14' 044.40"	0' 0.00"
W	DX-03	Repaired	DRY CRK	121° 14' 039.40"	0' 0.00"
W	DX-04	Repaired	DRY CRK	121° 14' 039.40"	0' 0.00"
W	DX-05	Repaired	DRY CRK	121° 14' 039.40"	0' 0.00"
W	DX-06	Repaired	DRY CRK	121° 14' 044.40"	0' 0.00"
W	DX-07	Repaired	DRY CRK	121° 14' 044.40"	0' 0.00"
W	DX-08	Repaired	DRY CRK	121° 14' 044.40"	0' 0.00"
W	DX-09	Repaired	DRY CRK	121° 14' 044.40"	0' 0.00"
W	DX-10	Repaired	DRY CRK	121° 14' 044.40"	0' 0.00"
W	DX-11	Repaired	DRY CRK	121° 14' 044.40"	0' 0.00"
W	DX-12	Repaired	DRY CRK	121° 14' 044.40"	0' 0.00"
W	DX-13	Repaired	DRY CRK	121° 14' 044.40"	0' 0.00"
W	DX-14	Repaired	DRY CRK	121° 14' 044.40"	0' 0.00"
W	DX-15	Repaired	DRY CRK	121° 14' 044.40"	0' 0.00"
W	DX-16	Repaired	DRY CRK	121° 14' 044.40"	0' 0.00"
W	DX-17	Repaired	DRY CRK	121° 14' 044.40"	0' 0.00"
W	DX-18	Repaired	DRY CRK	121° 14' 044.40"	0' 0.00"
W	DX-19	Repaired	DRY CRK	121° 14' 044.40"	0' 0.00"
W	DX-20	Repaired	DRY CRK	121° 14' 044.40"	0' 0.00"
W	DX-21	Repaired	DRY CRK	121° 14' 044.40"	0' 0.00"
W	DX-22	Repaired	DRY CRK	121° 14' 044.40"	0' 0.00"
W	DX-23	Repaired	DRY CRK	121° 14' 044.40"	0' 0.00"
W	DX-24	Repaired	DRY CRK	121° 14' 044.40"	0' 0.00"
W	DX-25	Repaired	DRY CRK	121° 14' 044.40"	0' 0.00"
W	DX-26	Repaired	DRY CRK	121° 14' 044.40"	0' 0.00"
W	DX-27	Repaired	DRY CRK	121° 14' 044.40"	0' 0.00"
W	DX-28	Repaired	DRY CRK	121° 14' 044.40"	0' 0.00"
W	DX-29	Repaired	DRY CRK	121° 14' 044.40"	0' 0.00"
W	DX-30	Repaired	DRY CRK	121° 14' 044.40"	0' 0.00"
W	DX-31	Repaired	DRY CRK	121° 14' 044.40"	0' 0.00"
W	DX-32	Repaired	DRY CRK	121° 14' 044.40"	0' 0.00"
W	DX-33	Repaired	DRY CRK	121° 14' 044.40"	0' 0.00"
W	DX-34	Repaired	DRY CRK	121° 14' 044.40"	0' 0.00"
W	DX-35	Repaired	DRY CRK	121° 14' 044.40"	0' 0.00"
W	DX-36	Repaired	DRY CRK	121° 14' 044.40"	0' 0.00"
W	DX-37	Repaired	DRY CRK	121° 14' 044.40"	0' 0.00"
W	DX-38	Repaired	DRY CRK	121° 14' 044.40"	0' 0.00"
W	DX-39	Repaired	DRY CRK	121° 14' 044.40"	0' 0.00"
W	DX-40	Repaired	DRY CRK	121° 14' 044.40"	0' 0.00"
W	DX-41	Repaired	DRY CRK	121° 14' 044.40"	0' 0.00"
W	DX-42	Repaired	DRY CRK	121° 14' 044.40"	0' 0.00"
W	DX-43	Repaired	DRY CRK	121° 14' 044.40"	0' 0.00"
W	DX-44	Repaired	DRY CRK	121° 14' 044.40"	0' 0.00"
W	DX-45	Repaired	DRY CRK	121° 14' 044.40"	0' 0.00"
W	DX-46	Repaired	DRY CRK	121° 14' 044.40"	0' 0.00"
W	DX-47	Repaired	DRY CRK	121° 14' 044.40"	0' 0.00"
W	DX-48	Repaired	DRY CRK	121° 14' 044.40"	0' 0.00"
W	DX-49	Repaired	DRY CRK	121° 14' 044.40"	0' 0.00"
W	DX-50	Repaired	DRY CRK	121° 14' 044.40"	0' 0.00"
W	DX-51	Repaired	DRY CRK	121° 14' 044.40"	0' 0.00"
W	DX-52	Repaired	DRY CRK	121° 14' 044.40"	0' 0.00"
W	DX-53	Repaired	DRY CRK	121° 14' 044.40"	0' 0.00"
W	DX-54	Repaired	DRY CRK	121° 14' 044.40"	0' 0.00"
W	DX-55	Repaired	DRY CRK	121° 14' 044.40"	0' 0.00"
W	DX-56	Repaired	DRY CRK	121° 14' 044.40"	0' 0.00"
W	DX-57	Repaired	DRY CRK	121° 14' 044.40"	0' 0.00"
W	DX-58	Repaired	DRY CRK	121° 14' 044.40"	0' 0.00"
W	DX-59	Repaired	DRY CRK	121° 14' 044.40"	0' 0.00"
W	DX-60	Repaired	DRY CRK	121° 14' 044.40"	0' 0.00"
W	DX-61	Repaired	DRY CRK	121° 14' 044.40"	0' 0.00"
W	DX-62	Repaired	DRY CRK	121° 14' 044.40"	0' 0.00"
W	DX-63	Repaired	DRY CRK	121° 14' 044.40"	0' 0.00"
W	DX-64	Repaired	DRY CRK	121° 14' 044.40"	0' 0.00"
W	DX-65	Repaired	DRY CRK	121° 14' 044.40"	0' 0.00"
W	DX-66	Repaired	DRY CRK	121° 14' 044.40"	0' 0.00"
W	DX-67	Repaired	DRY CRK	121° 14' 044.40"	0' 0.00"
W	DX-68	Repaired	DRY CRK	121° 14' 044.40"	0' 0.00"
W	DX-69	Repaired	DRY CRK	121° 14' 044.40"	0' 0.00"
W	DX-70	Repaired	DRY CRK	121° 14' 044.40"	0' 0.00"
W	DX-71	Repaired	DRY CRK	121° 14' 044.40"	0' 0.00"
W	DX-72	Repaired	DRY CRK	121° 14' 044.40"	0' 0.00"
W	DX-73	Repaired	DRY CRK	121° 14' 044.40"	0' 0.00"
W	DX-74	Repaired	DRY CRK	121° 14' 044.40"	0' 0.00"
W	DX-75	Repaired	DRY CRK	121° 14' 044.40"	0' 0.00"
W	DX-76	Repaired	DRY CRK	121° 14' 044.40"	0' 0.00"
W	DX-77	Repaired	DRY CRK	121° 14' 044.40"	0' 0.00"
W	DX-78	Repaired	DRY CRK	121° 14' 044.40"	0' 0.00"
W	DX-79	Repaired	DRY CRK	121° 14' 044.40"	0' 0.00"
W	DX-80	Repaired	DRY CRK	121° 14' 044.40"	0' 0.00"
W	DX-81	Repaired	DRY CRK	121° 14' 044.40"	0' 0.00"
W	DX-82	Repaired	DRY CRK	121° 14' 044.40"	0' 0.00"
W	DX-83	Repaired	DRY CRK	121° 14' 044.40"	0' 0.00"
W	DX-84	Repaired	DRY CRK	121° 14' 044.40"	0' 0.00"
W	DX-85	Repaired	DRY CRK	121° 14' 044.40"	0' 0.00"
W	DX-86	Repaired	DRY CRK	121° 14' 044.40"	0' 0.00"
W	DX-87	Repaired	DRY CRK	121° 14' 044.40"	0' 0.00"
W	DX-88	Repaired	DRY CRK	121° 14' 044.40"	0' 0.00"
W	DX-89	Repaired	DRY CRK	121° 14' 044.40"	0' 0.00"
W	DX-90	Repaired	DRY CRK	121° 14' 044.40"	0' 0.00"
W	DX-91	Repaired	DRY CRK	121° 14' 044.40"	0' 0.00"
W	DX-92	Repaired	DRY CRK	121° 14' 044.40"	0' 0.00"
W	DX-93	Repaired	DRY CRK	121° 14' 044.40"	0' 0.00"
W	DX-94	Repaired	DRY CRK	121° 14' 044.40"	0' 0.00"
W	DX-95	Repaired	DRY CRK	121° 14' 044.40"	0' 0.00"
W	DX-96	Repaired	DRY CRK	121° 14' 044.40"	0' 0.00"
W	DX-97	Repaired	DRY CRK	121° 14' 044.40"	0' 0.00"
W	DX-98	Repaired	DRY CRK	121° 14' 044.40"	0' 0.00"
W	DX-99	Repaired	DRY CRK	121° 14' 044.40"	0' 0.00"
W	DX-100	Repaired	DRY CRK	121° 14' 044.40"	0' 0.00"

