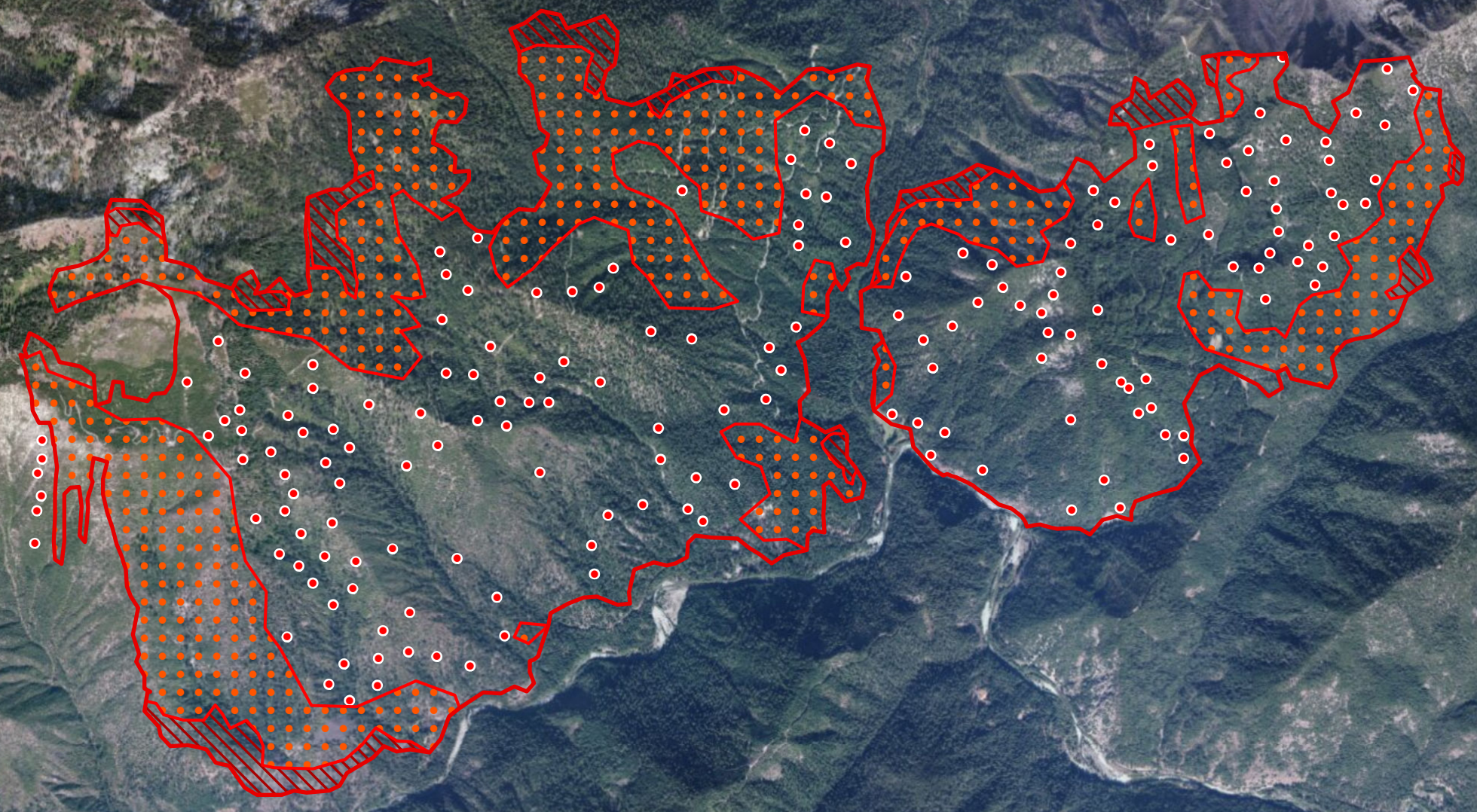


Salmon River Complex
CA-KNF-005561
Infrared Interpretation
Imagery Date:
08/04/2013 2356 Hrs PDT
Heat acres: 5,248



- Heat Perimeter
 - Intense Heat Areas
 - Scattered Heat Areas
 - Isolated Heat Sources
- NAD 1983 UTM Zone 10N

IRIN: Joe Larson, Alan Peters (t)
Map produced:
8/5/2013 0236 hrs

Miles Copyright © 2013 National Geographic Society, I-cubed, Source: Esri, DigitalGlobe, GeoEye, I-cubed, USDA, USGS, AL... swisstopo, and the GIS User Community