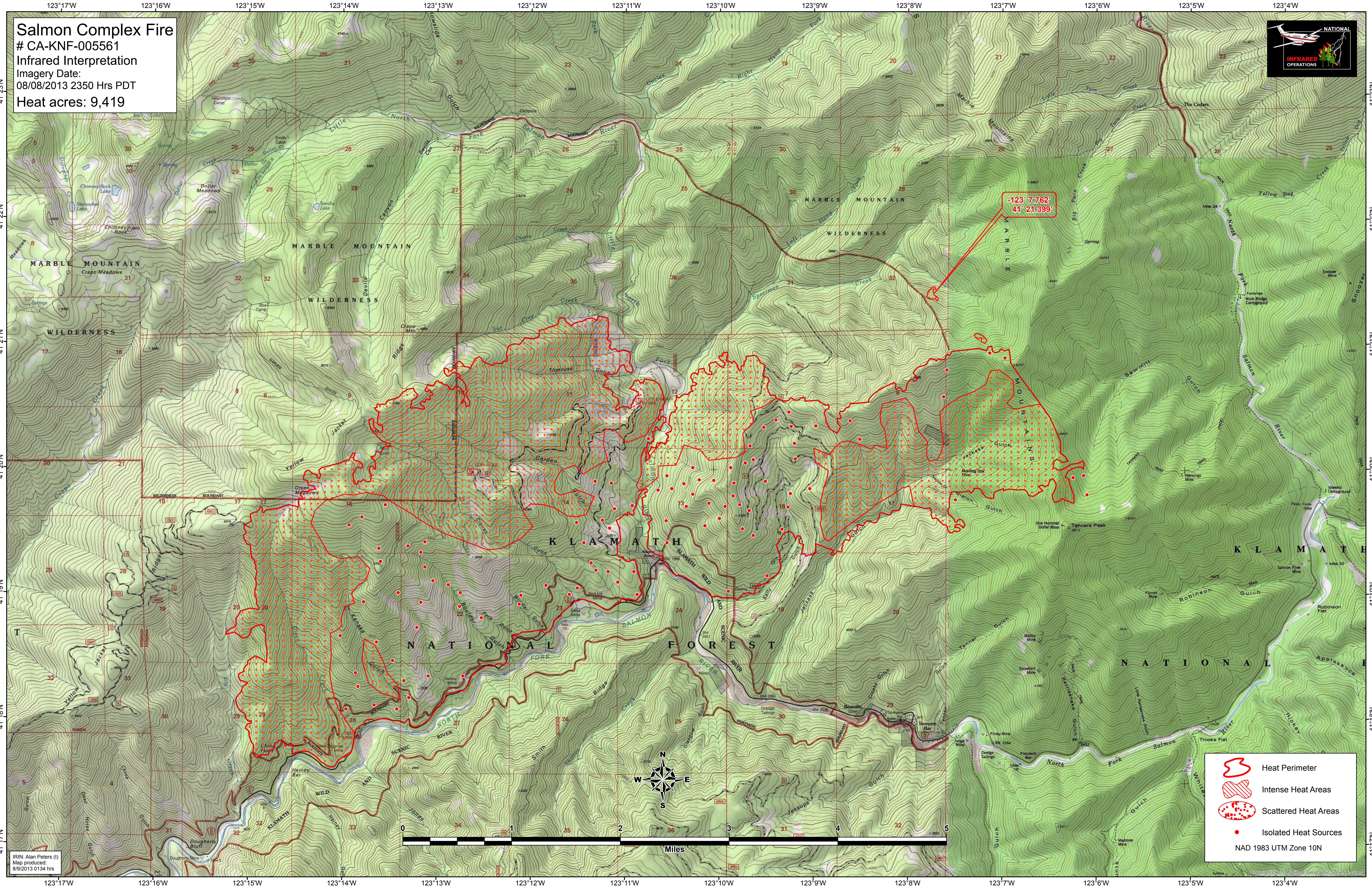


**Salmon Complex Fire**  
# CA-KNF-005561  
Infrared Interpretation  
Imagery Date:  
08/08/2013 2350 Hrs PDT  
Heat acres: 9,419



-123° 7.762'  
41° 21.399'

IRIN: Alan Peters (I)  
Map produced:  
8/9/2013 0134 hrs



- Heat Perimeter
- Intense Heat Areas
- Scattered Heat Areas
- Isolated Heat Sources

NAD 1983 UTM Zone 10N

© 2013 National Geographic Society. All rights reserved.