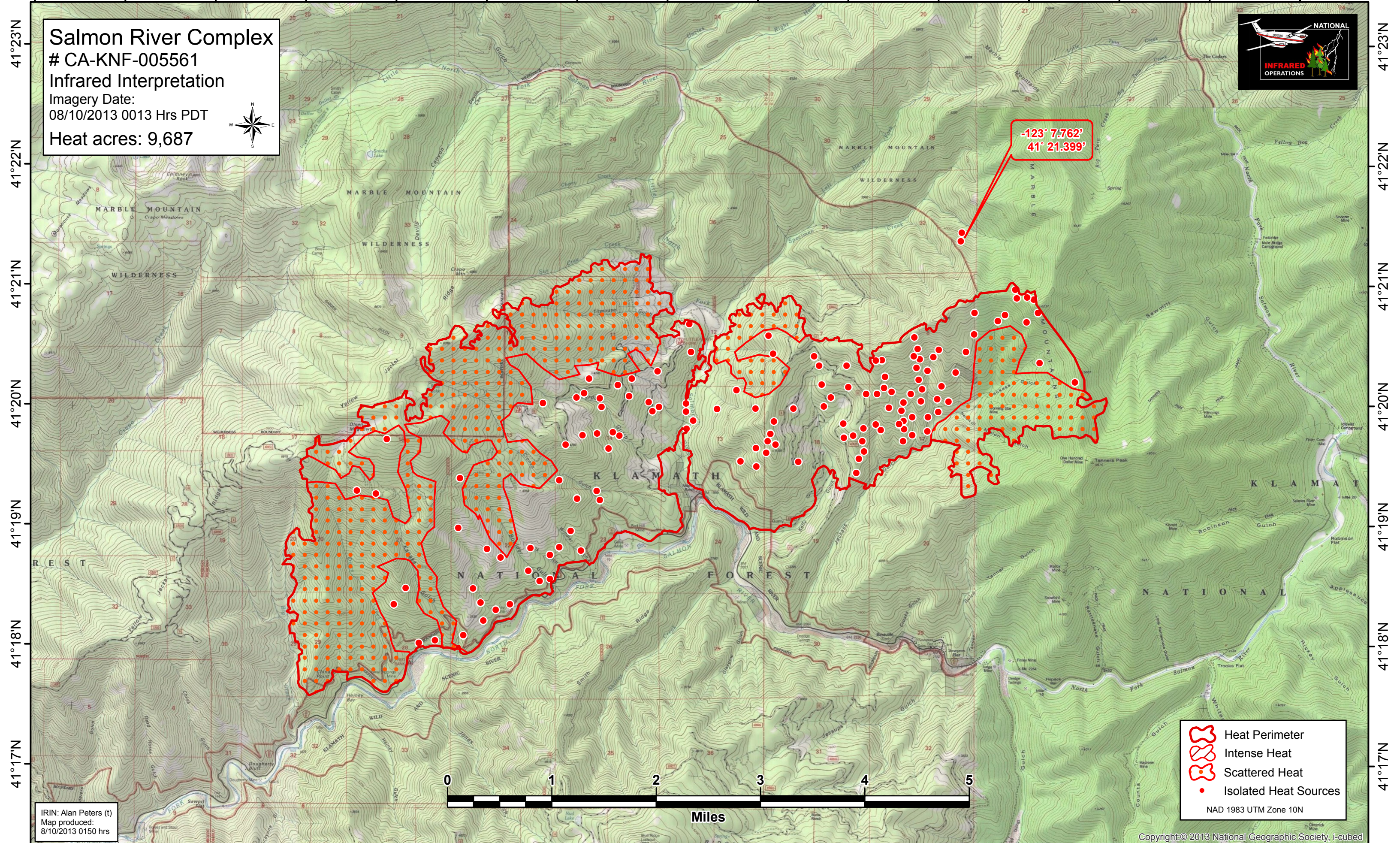
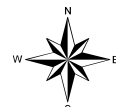


123°18'W 123°17'W 123°16'W 123°15'W 123°14'W 123°13'W 123°12'W 123°11'W 123°10'W 123°9'W 123°8'W 123°7'W 123°6'W 123°5'W 123°4'W



Salmon River Complex
CA-KNF-005561
Infrared Interpretation
Imagery Date:
08/10/2013 0013 Hrs PDT
Heat acres: 9,687



-123° 7.762'
41° 21.399'



- Heat Perimeter
 - Intense Heat
 - Scattered Heat
 - Isolated Heat Sources
- NAD 1983 UTM Zone 10N

IRIN: Alan Peters (t)
Map produced:
8/10/2013 0150 hrs

123°18'W 123°17'W 123°16'W 123°15'W 123°14'W 123°13'W 123°12'W 123°11'W 123°10'W 123°9'W 123°8'W 123°7'W 123°6'W 123°5'W 123°4'W