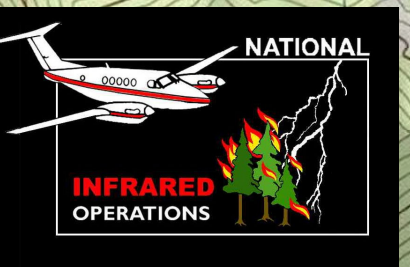


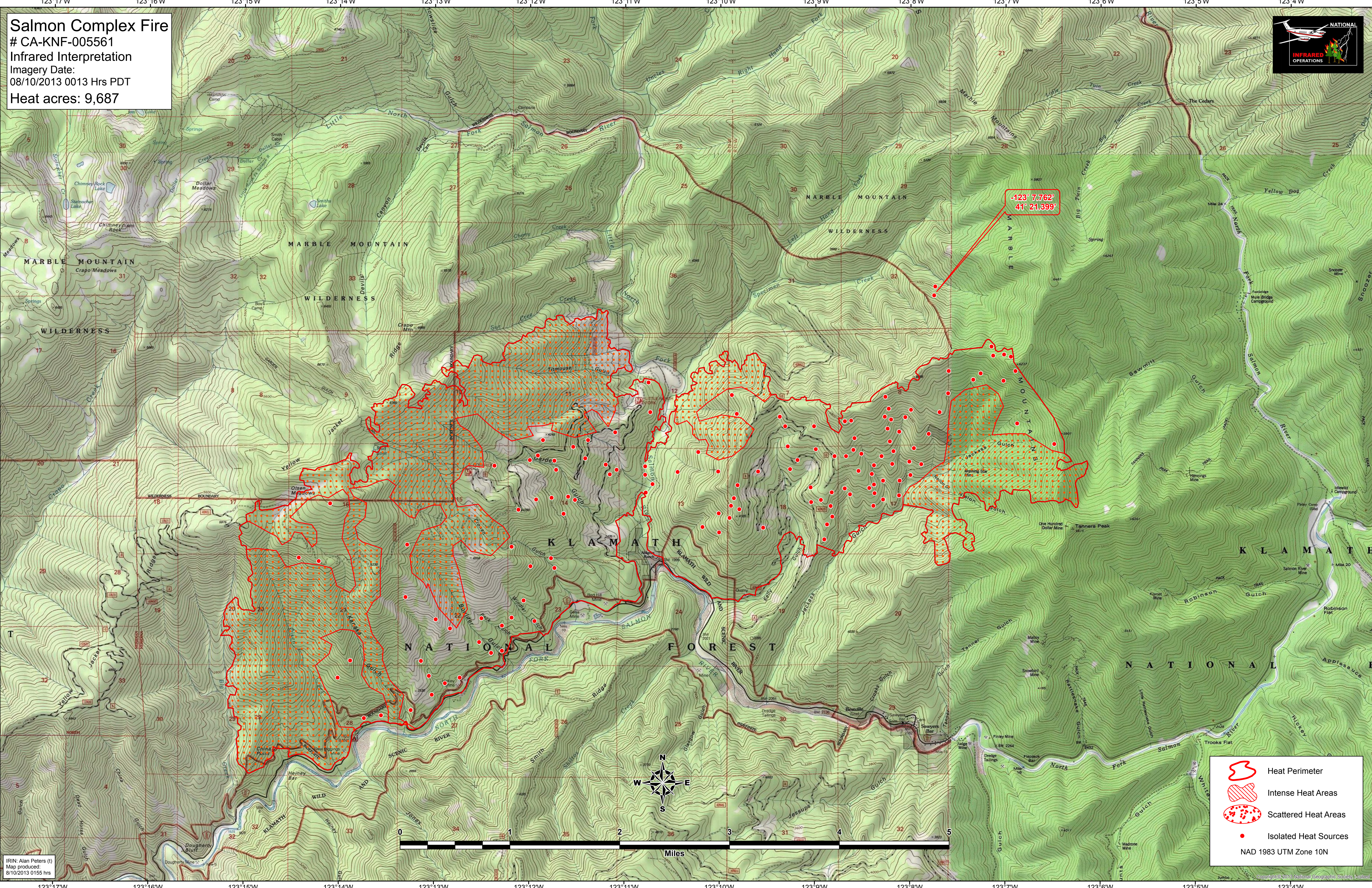
**Salmon Complex Fire**  
 # CA-KNF-005561  
 Infrared Interpretation  
 Imagery Date:  
 08/10/2013 0013 Hrs PDT  
 Heat acres: 9,687



-123° 7.762'  
 41° 21.399'

- Heat Perimeter
- Intense Heat Areas
- Scattered Heat Areas
- Isolated Heat Sources

NAD 1983 UTM Zone 10N



IRIN: Alan Peters (1)  
 Map produced:  
 8/10/2013 0155 hrs

Copyright © 2013 National Geographic Society. All rights reserved.