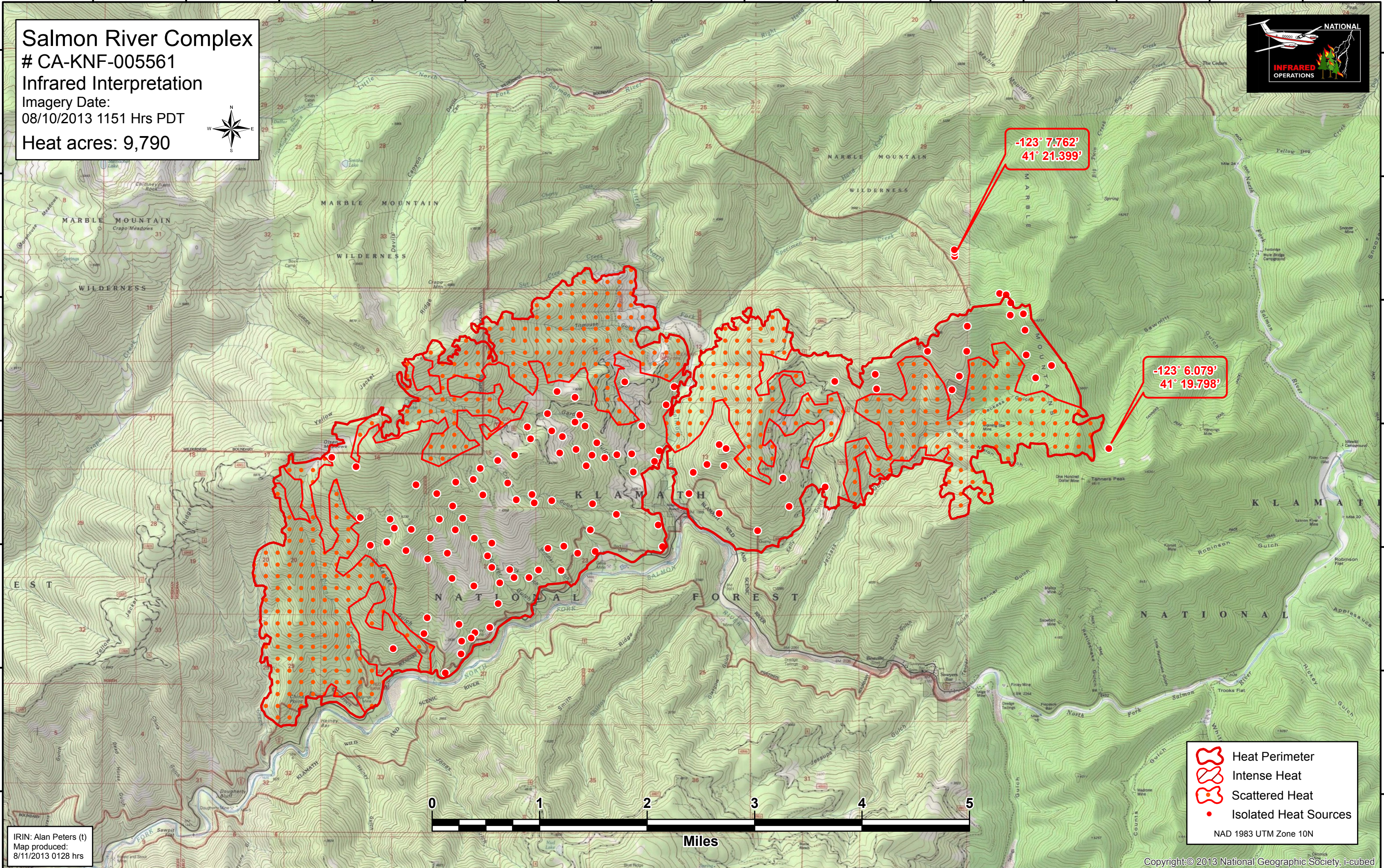
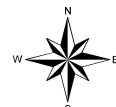


123°17'W 123°16'W 123°15'W 123°14'W 123°13'W 123°12'W 123°11'W 123°10'W 123°9'W 123°8'W 123°7'W 123°6'W 123°5'W 123°4'W

Salmon River Complex
CA-KNF-005561
Infrared Interpretation
Imagery Date:
08/10/2013 1151 Hrs PDT
Heat acres: 9,790



-123° 7.762'
41° 21.399'

-123° 6.079'
41° 19.798'

- Heat Perimeter
 - Intense Heat
 - Scattered Heat
 - Isolated Heat Sources
- NAD 1983 UTM Zone 10N



IRIN: Alan Peters (t)
Map produced:
8/11/2013 0128 hrs

123°17'W 123°16'W 123°15'W 123°14'W 123°13'W 123°12'W 123°11'W 123°10'W 123°9'W 123°8'W 123°7'W 123°6'W 123°5'W 123°4'W