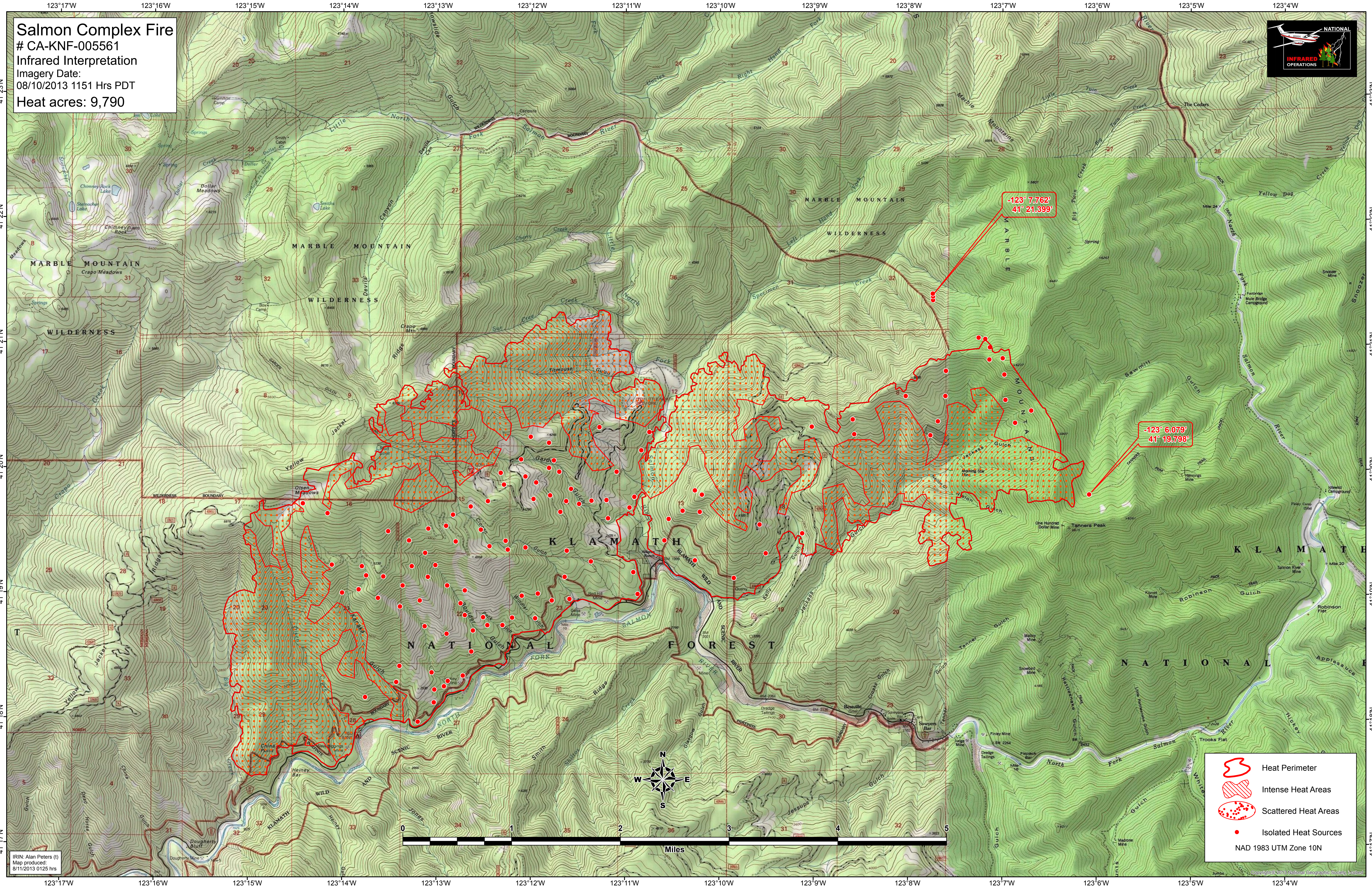
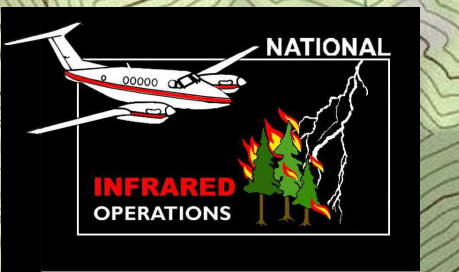

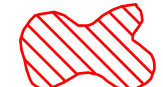




**Salmon Complex Fire**  
 # CA-KNF-005561  
 Infrared Interpretation  
 Imagery Date:  
 08/10/2013 1151 Hrs PDT  
 Heat acres: 9,790



-123° 7.762'  
 41° 21.399'

-123° 6.079'  
 41° 19.798'

-  Heat Perimeter
-  Intense Heat Areas
-  Scattered Heat Areas
-  Isolated Heat Sources

NAD 1983 UTM Zone 10N

IRIN: Alan Peters (1)  
 Map produced:  
 8/11/2013 0125 hrs

Copyright © 2013 National Geographic Society. All rights reserved.