

123°18'W 123°17'W 123°16'W 123°15'W 123°14'W 123°13'W 123°12'W 123°11'W 123°10'W 123°9'W 123°8'W 123°7'W 123°6'W 123°5'W 123°4'W

Salmon River Complex
CA-KNF-005561
Infrared Interpretation
Imagery Date:
08/12/2013 2329 Hrs PDT
Heat acres: 11,139

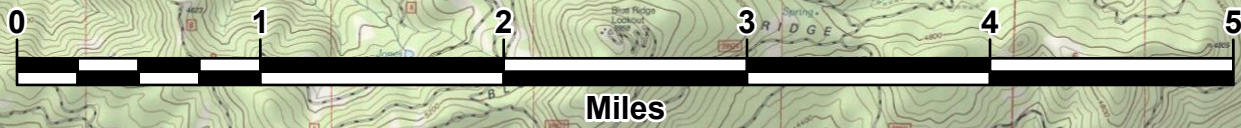
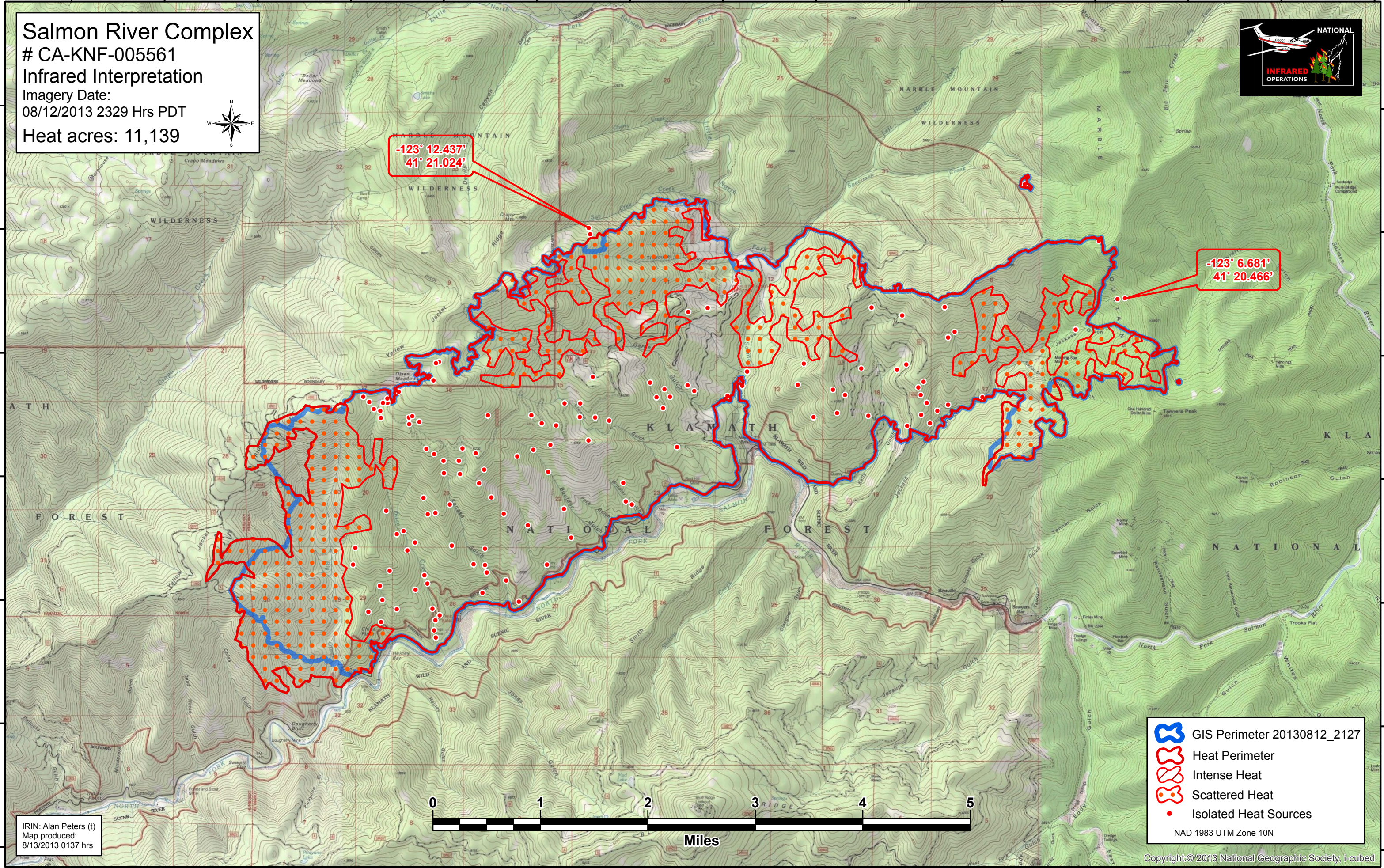







-123° 12.437'
41° 21.024'

-123° 6.681'
41° 20.466'

41°22'N
41°21'N
41°20'N
41°19'N
41°18'N
41°17'N
41°16'N

41°22'N
41°21'N
41°20'N
41°19'N
41°18'N
41°17'N
41°16'N



-  GIS Perimeter 20130812_2127
 -  Heat Perimeter
 -  Intense Heat
 -  Scattered Heat
 -  Isolated Heat Sources
- NAD 1983 UTM Zone 10N

IRIN: Alan Peters (t)
Map produced:
8/13/2013 0137 hrs

123°18'W 123°17'W 123°16'W 123°15'W 123°14'W 123°13'W 123°12'W 123°11'W 123°10'W 123°9'W 123°8'W 123°7'W 123°6'W 123°5'W 123°4'W