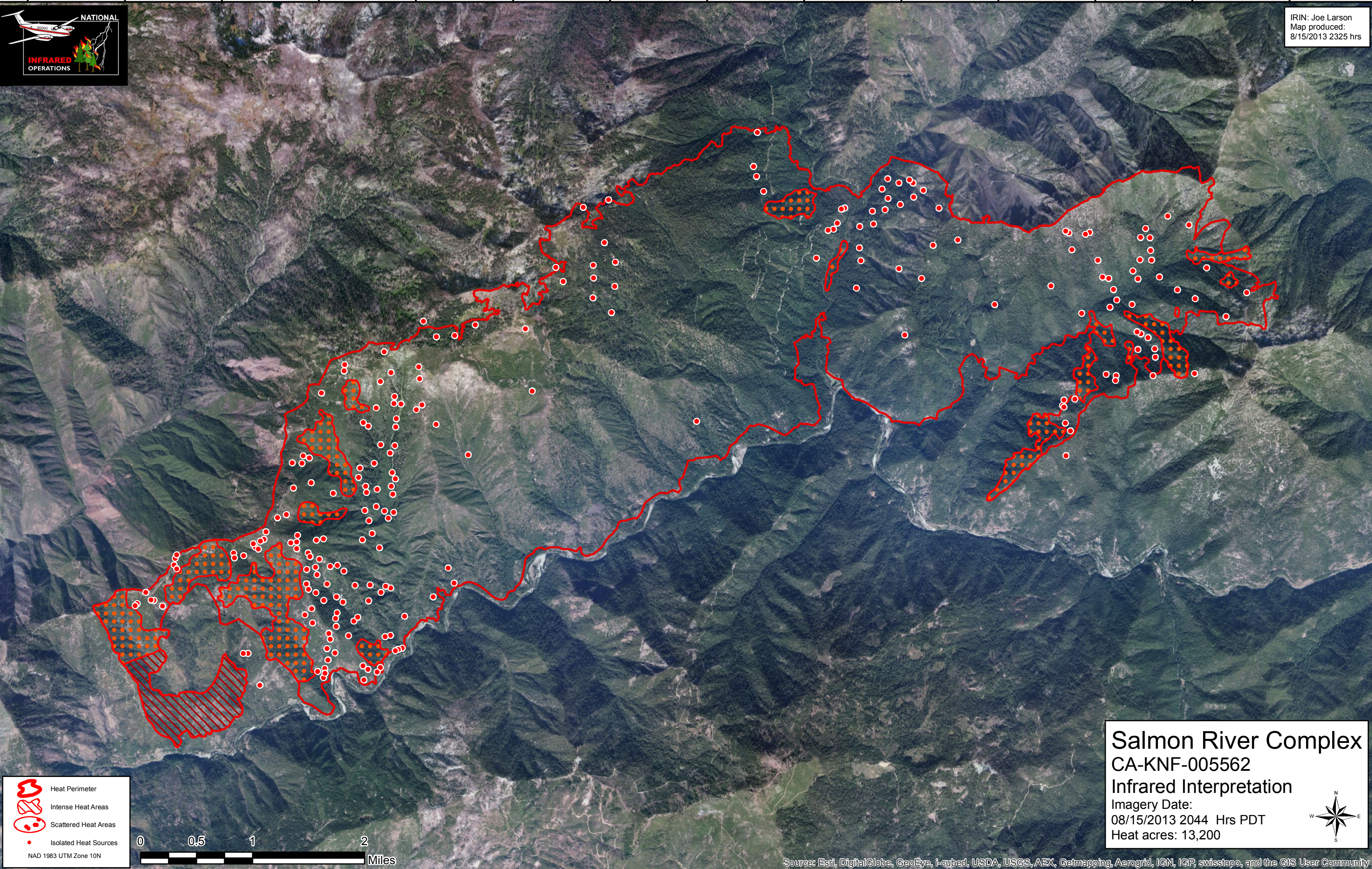





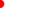
123°19'W 123°18'W 123°17'W 123°16'W 123°15'W 123°14'W 123°13'W 123°12'W 123°11'W 123°10'W 123°9'W 123°8'W 123°7'W 123°6'W

41°22'N
41°21'N
41°20'N
41°19'N
41°18'N
41°17'N
41°16'N



IRIN: Joe Larson
Map produced:
8/15/2013 2325 hrs



-  Heat Perimeter
-  Intense Heat Areas
-  Scattered Heat Areas
-  Isolated Heat Sources

NAD 1983 UTM Zone 10N



Salmon River Complex
CA-KNF-005562
Infrared Interpretation
 Imagery Date:
 08/15/2013 2044 Hrs PDT
 Heat acres: 13,200



Source: Esri, DigitalGlobe, GeoEye, i-cubed, USDA, USGS, AEX, Getmapping, Aerogrid, IGN, IGP, swisstopo, and the GIS User Community

123°19'W 123°18'W 123°17'W 123°16'W 123°15'W 123°14'W 123°13'W 123°12'W 123°11'W 123°10'W 123°9'W 123°8'W 123°7'W 123°6'W