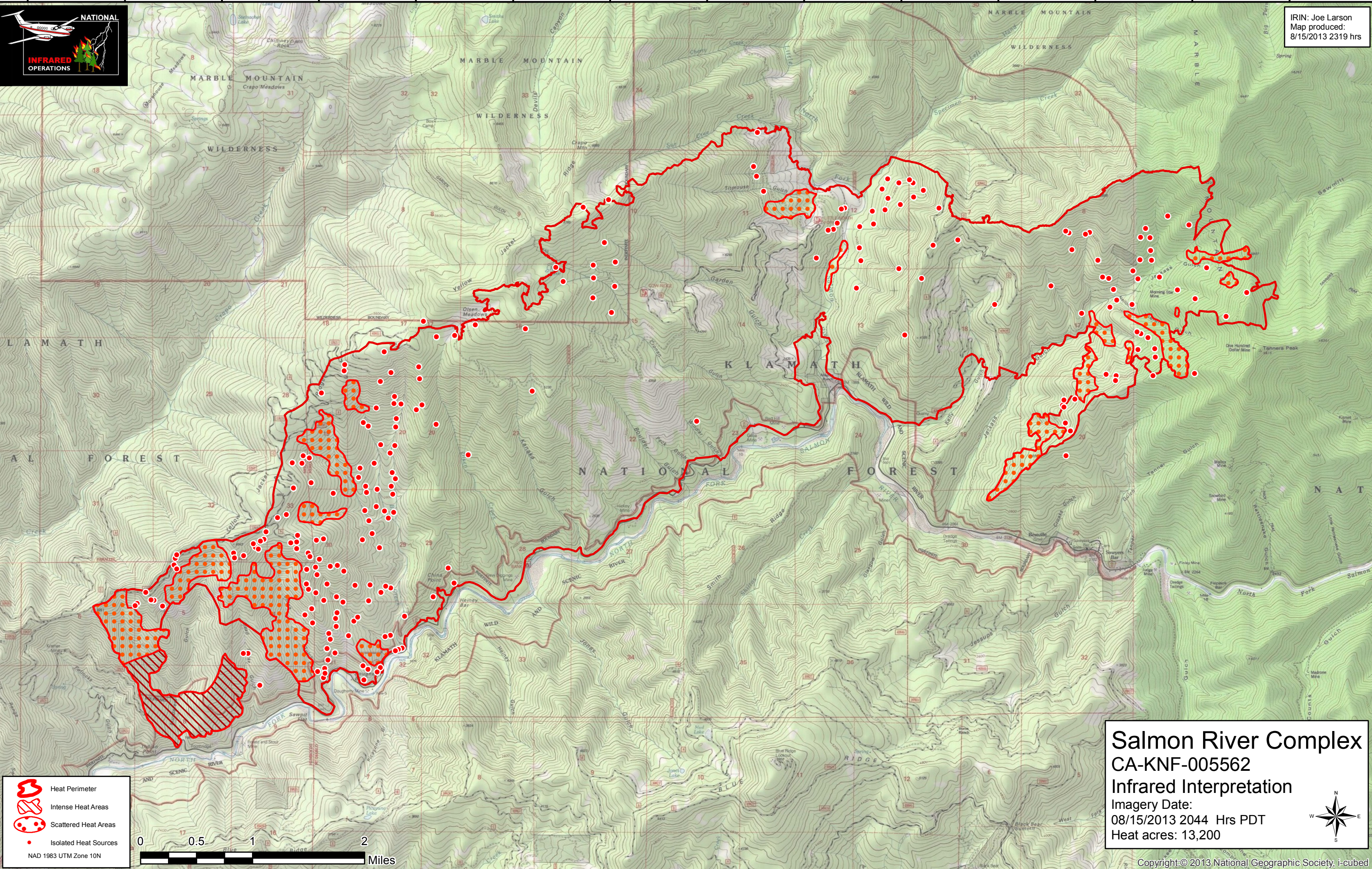






123°19'W 123°18'W 123°17'W 123°16'W 123°15'W 123°14'W 123°13'W 123°12'W 123°11'W 123°10'W 123°9'W 123°8'W 123°7'W 123°6'W

41°22'N  
41°21'N  
41°20'N  
41°19'N  
41°18'N  
41°17'N  
41°16'N



IRIN: Joe Larson  
Map produced:  
8/15/2013 2319 hrs

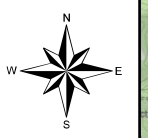


-  Heat Perimeter
-  Intense Heat Areas
-  Scattered Heat Areas
-  Isolated Heat Sources

NAD 1983 UTM Zone 10N



**Salmon River Complex**  
**CA-KNF-005562**  
**Infrared Interpretation**  
 Imagery Date:  
 08/15/2013 2044 Hrs PDT  
 Heat acres: 13,200



Copyright: © 2013 National Geographic Society, i-cubed

123°19'W 123°18'W 123°17'W 123°16'W 123°15'W 123°14'W 123°13'W 123°12'W 123°11'W 123°10'W 123°9'W 123°8'W 123°7'W 123°6'W