





123°19'W 123°18'W 123°17'W 123°16'W 123°15'W 123°14'W 123°13'W 123°12'W 123°11'W 123°10'W 123°9'W 123°8'W 123°7'W 123°6'W

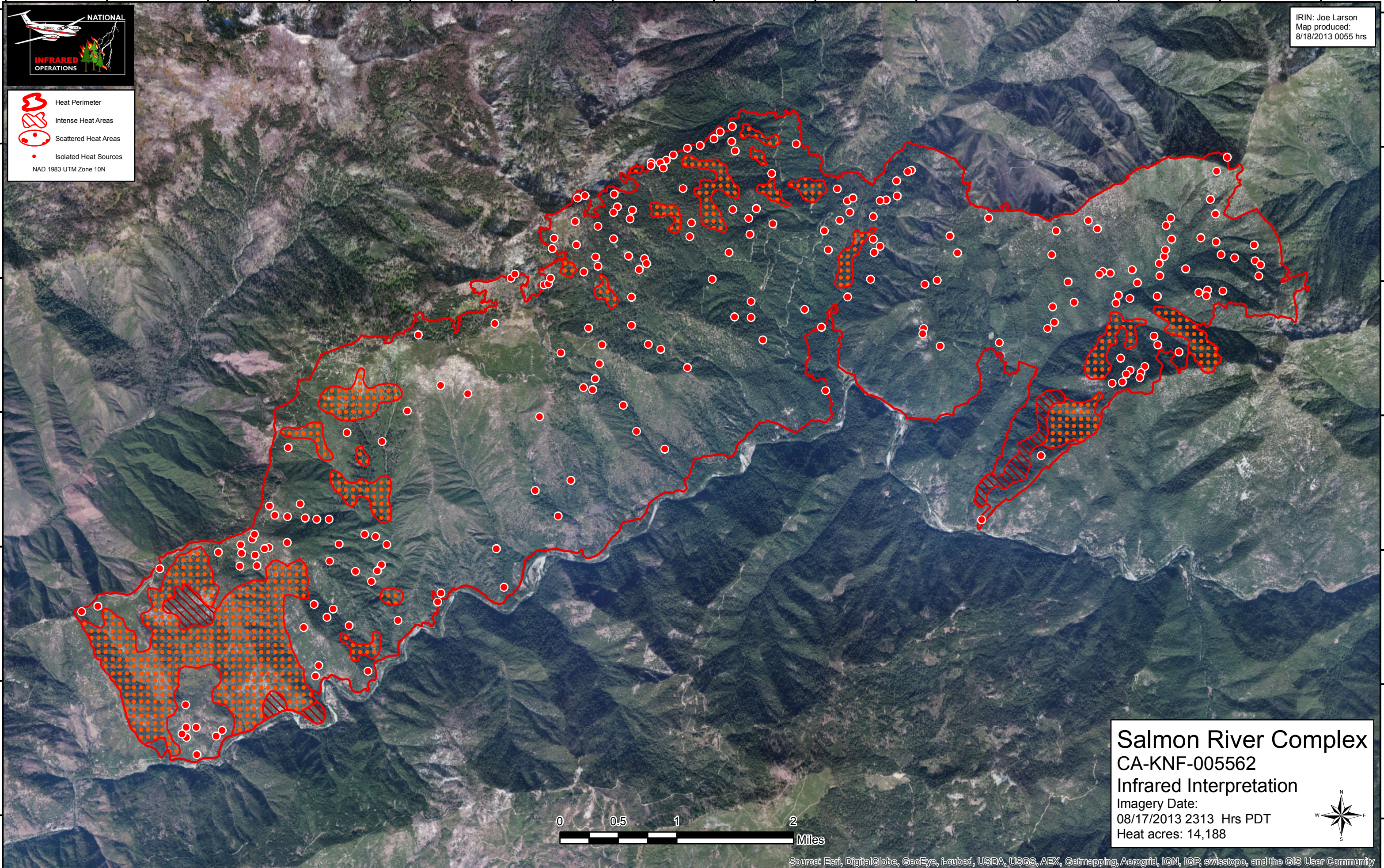


IRIN: Joe Larson  
Map produced:  
8/18/2013 0055 hrs

-  Heat Perimeter
  -  Intense Heat Areas
  -  Scattered Heat Areas
  -  Isolated Heat Sources
- NAD 1983 UTM Zone 10N

41°21'N  
41°20'N  
41°19'N  
41°18'N  
41°17'N  
41°16'N

41°21'N  
41°20'N  
41°19'N  
41°18'N  
41°17'N  
41°16'N



**Salmon River Complex**  
**CA-KNF-005562**  
**Infrared Interpretation**  
 Imagery Date:  
 08/17/2013 2313 Hrs PDT  
 Heat acres: 14,188



Source: Esri, DigitalGlobe, GeoEye, i-cubed, USDA, USGS, AEX, Getmapping, Aerogrid, IGN, IGP, swisstopo, and the GIS User Community

123°18'W 123°17'W 123°16'W 123°15'W 123°14'W 123°13'W 123°12'W 123°11'W 123°10'W 123°9'W 123°8'W 123°7'W 123°6'W