

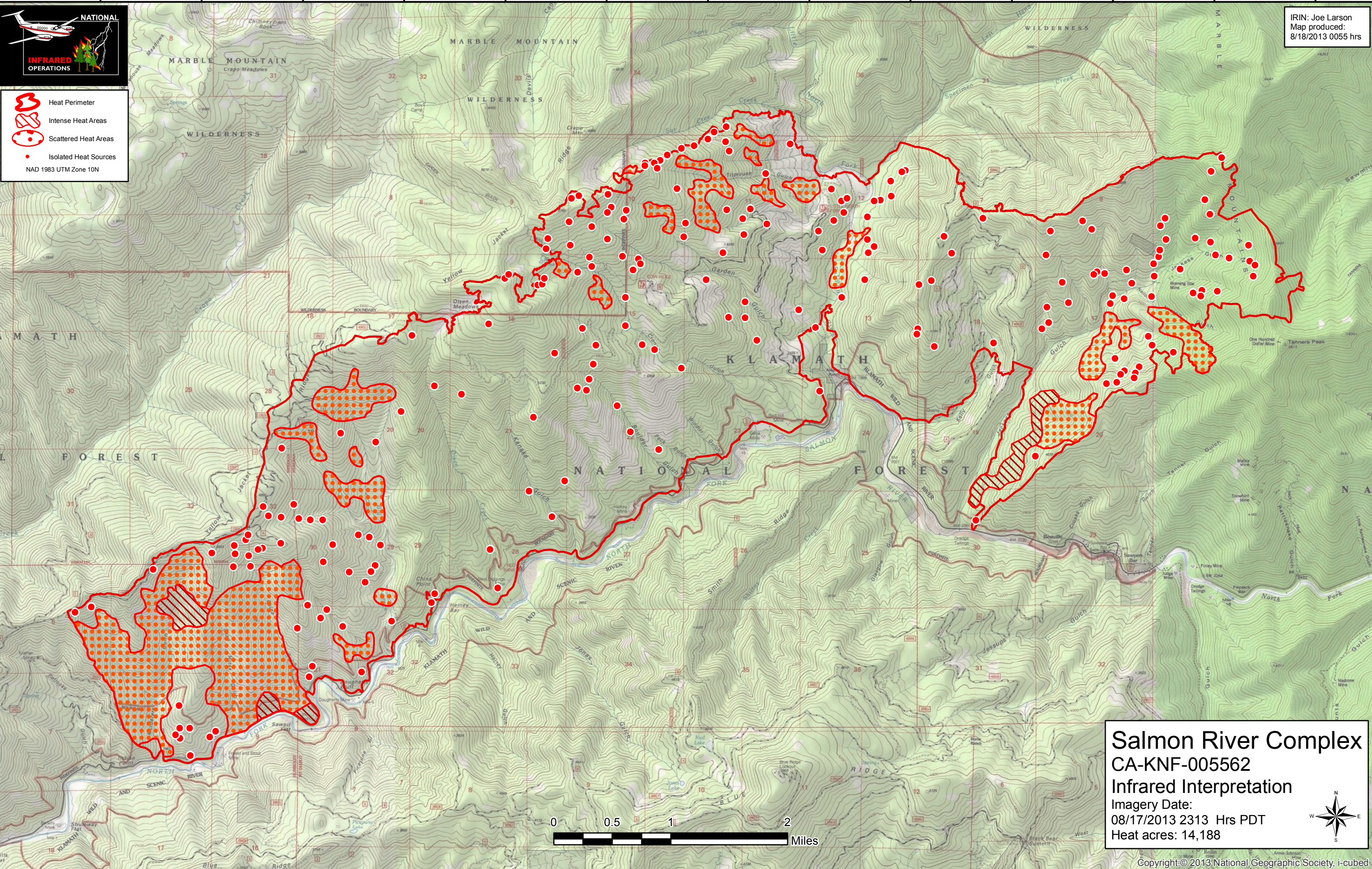
123°19'W 123°18'W 123°17'W 123°16'W 123°15'W 123°14'W 123°13'W 123°12'W 123°11'W 123°10'W 123°9'W 123°8'W 123°7'W 123°6'W

41°21'N
41°20'N
41°19'N
41°18'N
41°17'N
41°16'N



- Heat Perimeter
 - Intense Heat Areas
 - Scattered Heat Areas
 - Isolated Heat Sources
- NAD 1983 UTM Zone 10N

IRIN: Joe Larson
Map produced:
8/18/2013 0055 hrs



Salmon River Complex
CA-KNF-005562
Infrared Interpretation
 Imagery Date:
 08/17/2013 2313 Hrs PDT
 Heat acres: 14,188



Copyright:© 2013 National Geographic Society, i-cubed

123°18'W 123°17'W 123°16'W 123°15'W 123°14'W 123°13'W 123°12'W 123°11'W 123°10'W 123°9'W 123°8'W 123°7'W 123°6'W