





123°19'W 123°18'W 123°17'W 123°16'W 123°15'W 123°14'W 123°13'W 123°12'W 123°11'W 123°10'W 123°9'W 123°8'W 123°7'W 123°6'W

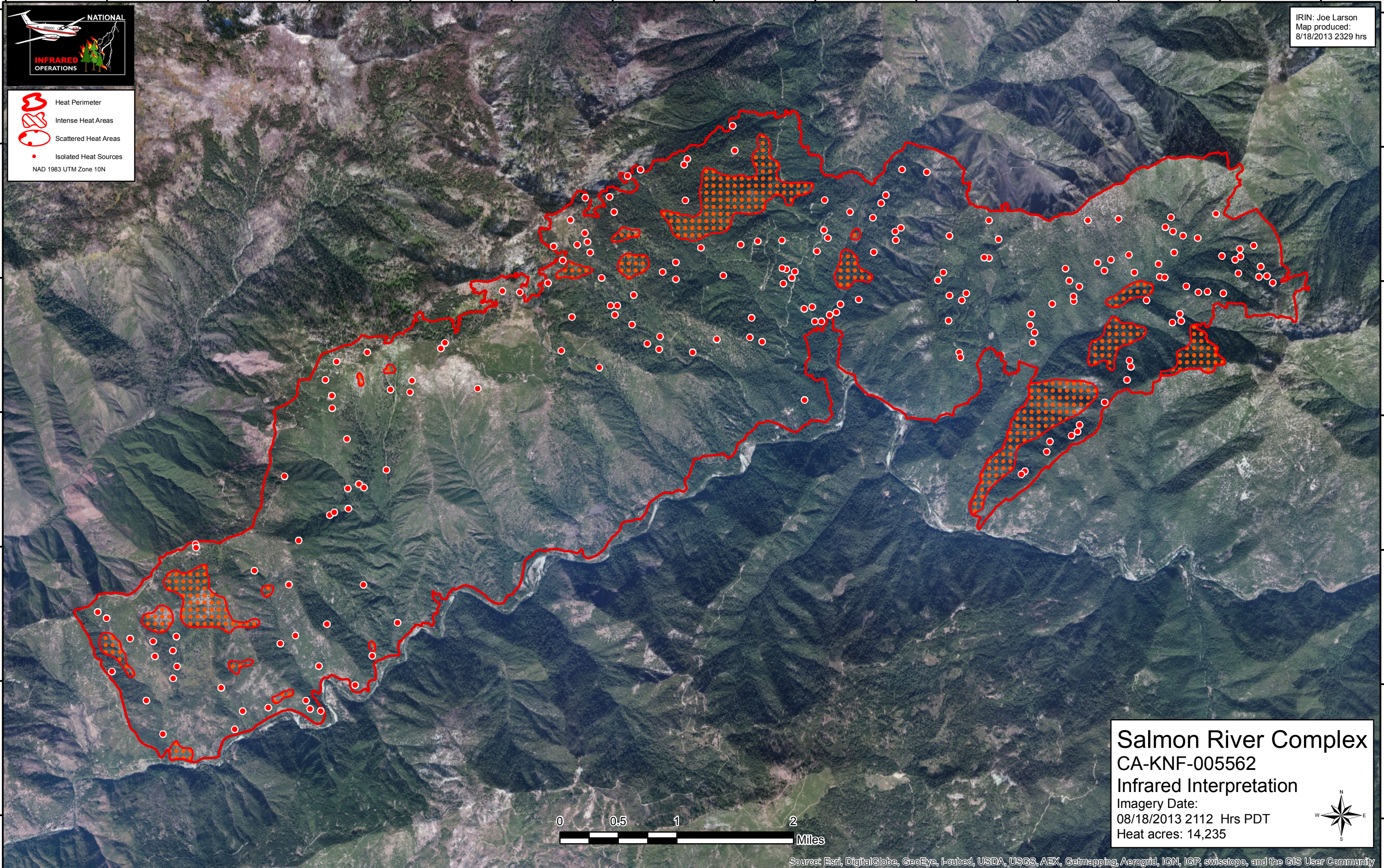


IRIN: Joe Larson
Map produced:
8/18/2013 2329 hrs

-  Heat Perimeter
 -  Intense Heat Areas
 -  Scattered Heat Areas
 -  Isolated Heat Sources
- NAD 1983 UTM Zone 10N

41°21'N
41°20'N
41°19'N
41°18'N
41°17'N
41°16'N

41°21'N
41°20'N
41°19'N
41°18'N
41°17'N
41°16'N



Salmon River Complex
 CA-KNF-005562
 Infrared Interpretation
 Imagery Date:
 08/18/2013 2112 Hrs PDT
 Heat acres: 14,235



Source: Esri, DigitalGlobe, GeoEye, i-cubed, USDA, USGS, AEX, Getmapping, Aerogrid, IGN, IGP, swisstopo, and the GIS User Community

123°18'W 123°17'W 123°16'W 123°15'W 123°14'W 123°13'W 123°12'W 123°11'W 123°10'W 123°9'W 123°8'W 123°7'W 123°6'W