

123°19'W 123°18'W 123°17'W 123°16'W 123°15'W 123°14'W 123°13'W 123°12'W 123°11'W 123°10'W 123°9'W 123°8'W 123°7'W 123°6'W

Salmon River Complex

CA-KNF-005561

Infrared Interpretation

Imagery Date:

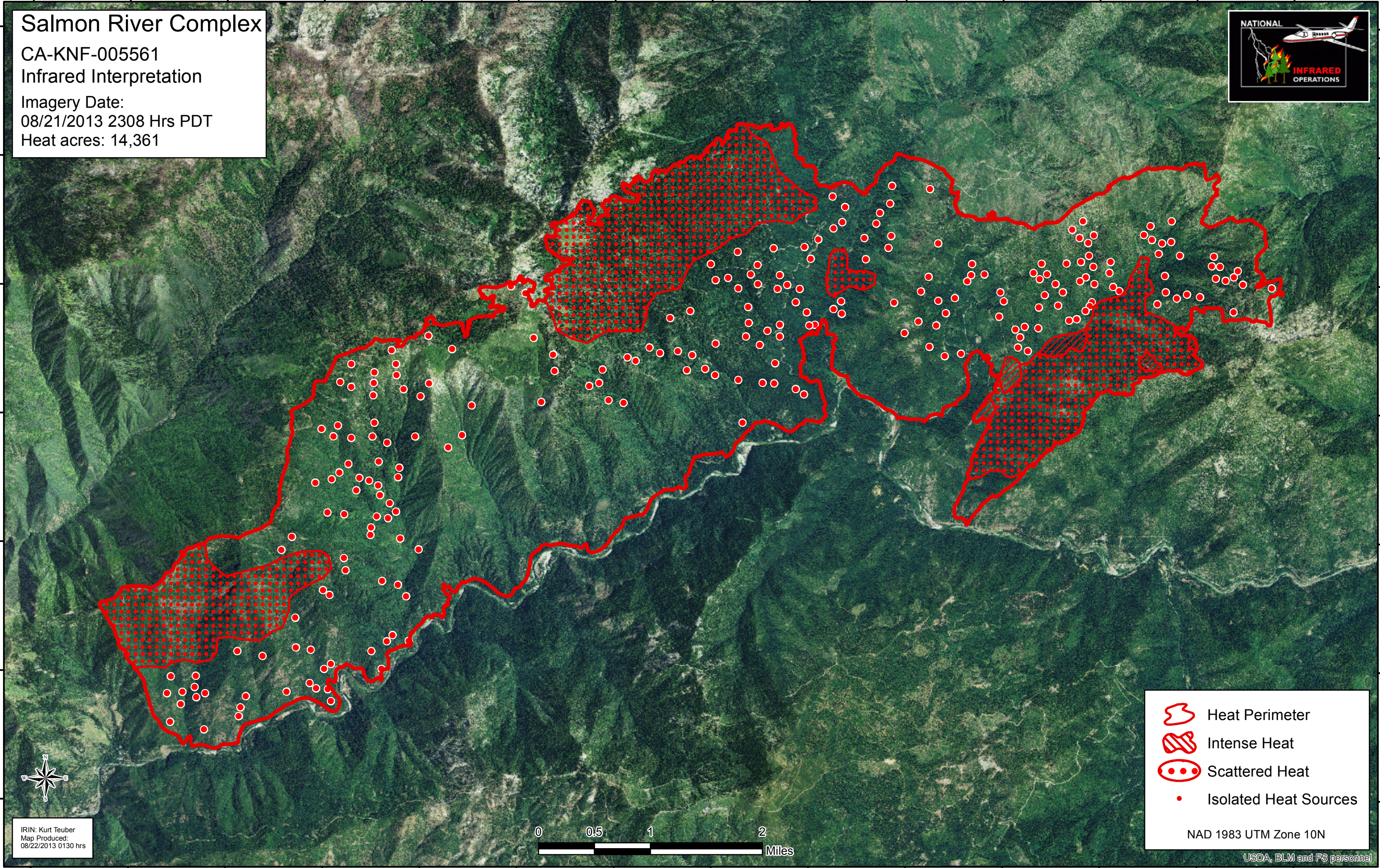
08/21/2013 2308 Hrs PDT

Heat acres: 14,361







41°22'N
41°21'N
41°20'N
41°19'N
41°18'N
41°17'N
41°16'N

41°22'N
41°21'N
41°20'N
41°19'N
41°18'N
41°17'N
41°16'N



IRIN: Kurt Teuber
Map Produced:
08/22/2013 0130 hrs



-  Heat Perimeter
-  Intense Heat
-  Scattered Heat
-  Isolated Heat Sources

NAD 1983 UTM Zone 10N

USDA, BLM and FS personnel

123°19'W 123°18'W 123°17'W 123°16'W 123°15'W 123°14'W 123°13'W 123°12'W 123°11'W 123°10'W 123°9'W 123°8'W 123°7'W 123°6'W