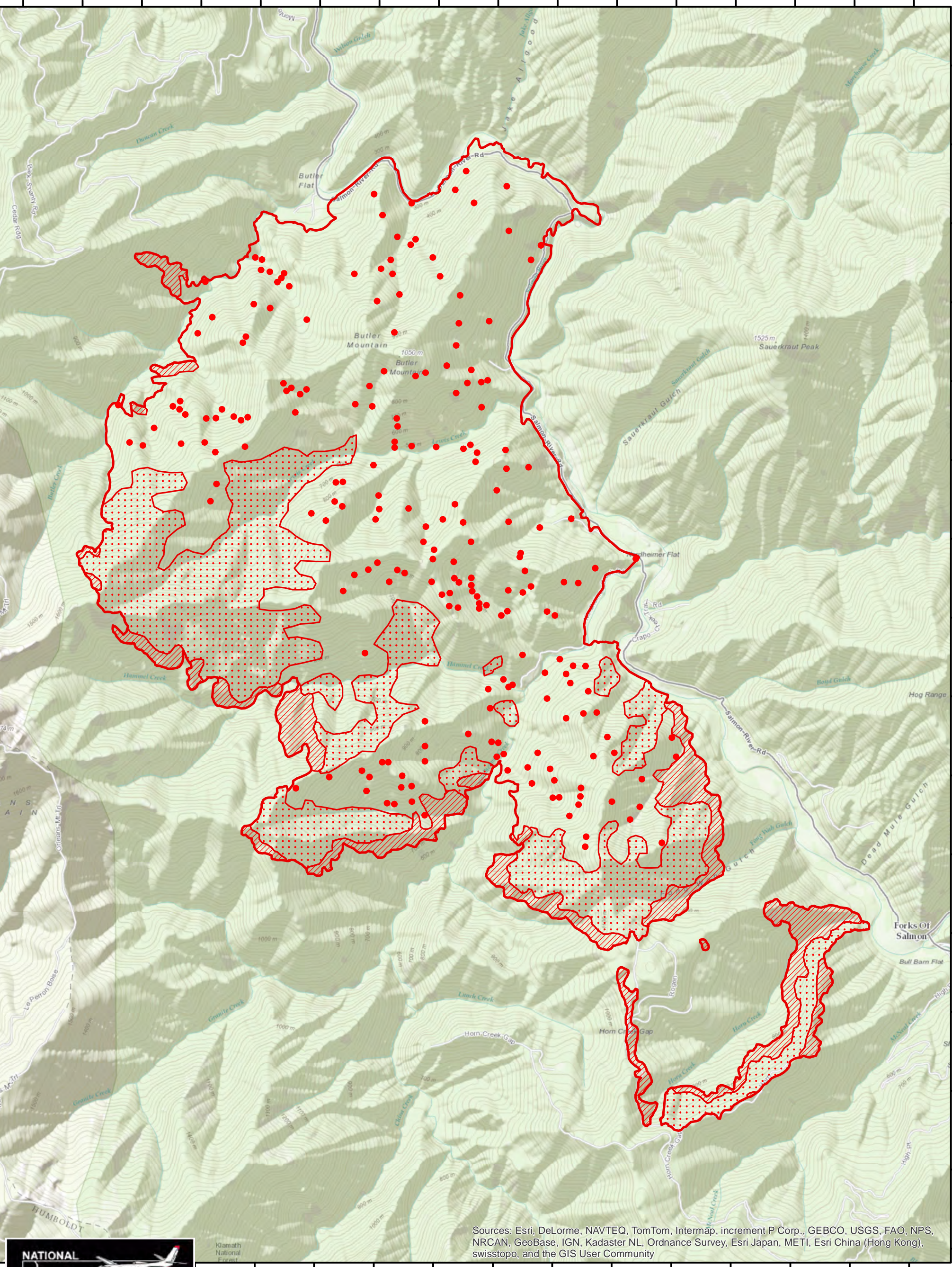


123°27'0"W 123°26'30"W 123°26'0"W 123°25'30"W 123°25'0"W 123°24'30"W 123°24'0"W 123°23'30"W 123°23'0"W 123°22'30"W 123°22'0"W 123°21'30"W 123°21'0"W 123°20'30"W 123°20'0"W 123°19'30"W

41°21'0"N
41°20'30"N
41°20'0"N
41°19'30"N
41°19'0"N
41°18'30"N
41°18'0"N
41°17'30"N
41°17'0"N
41°16'30"N
41°16'0"N
41°15'30"N
41°15'0"N
41°14'30"N
41°14'0"N
41°13'30"N

41°21'0"N
41°20'30"N
41°20'0"N
41°19'30"N
41°19'0"N
41°18'30"N
41°18'0"N
41°17'30"N
41°17'0"N
41°16'30"N
41°16'0"N
41°15'30"N
41°15'0"N
41°14'30"N
41°14'0"N
41°13'30"N



Sources: Esri, DeLorme, NAVTEQ, TomTom, Intermap, increment P Corp., GEBCO, USGS, FAO, NPS, NRCAN, GeoBase, IGN, Kadaster NL, Ordnance Survey, Esri Japan, METI, Esri China (Hong Kong), swisstopo, and the GIS User Community



Melanie Kerr

- Legend**
- 20130812_2329_Butler_HeatPerimeter
 - 20130812_2329_Butler_IntenseHeat
 - 20130812_2329_Butler_ScatteredHeat
 - 20130812_2329_Butler_IsolatedHeatSource

10,270 Acres

Lat/Long
GCS_WGS_1984

Butler Fire

IR Flight August 12, 2013 2329 hr

