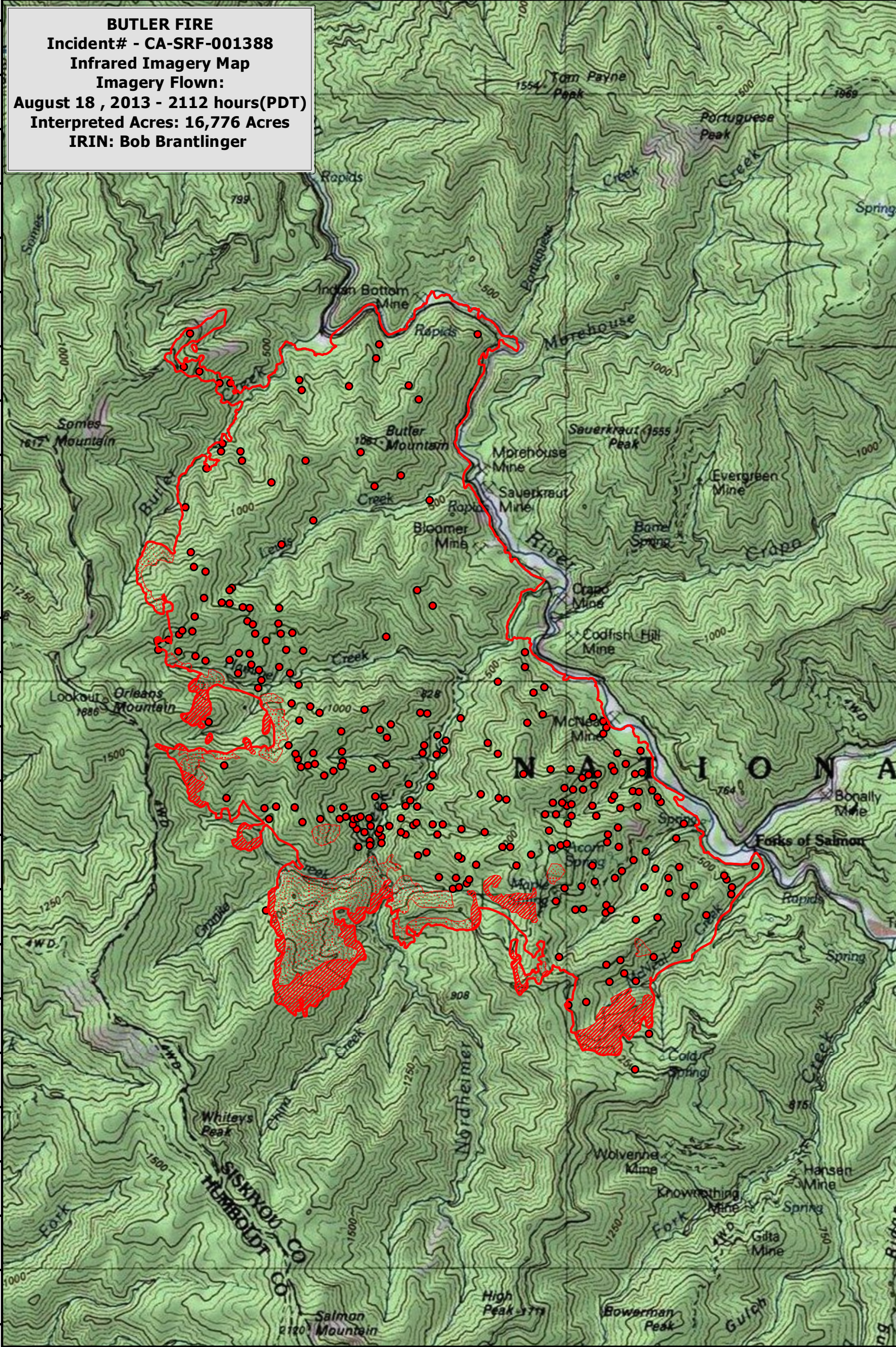


123°28'0"W 123°27'0"W 123°26'0"W 123°25'0"W 123°24'0"W 123°23'0"W 123°22'0"W 123°21'0"W 123°20'0"W 123°19'0"W 123°18'0"W

41°23'0"N  
41°22'30"N  
41°22'0"N  
41°21'30"N  
41°21'0"N  
41°20'30"N  
41°20'0"N  
41°19'30"N  
41°19'0"N  
41°18'30"N  
41°18'0"N  
41°17'30"N  
41°17'0"N  
41°16'30"N  
41°16'0"N  
41°15'30"N  
41°15'0"N  
41°14'30"N  
41°14'0"N  
41°13'30"N  
41°13'0"N  
41°12'30"N  
41°12'0"N  
41°11'30"N  
41°11'0"N

41°23'0"N  
41°22'30"N  
41°22'0"N  
41°21'30"N  
41°21'0"N  
41°20'30"N  
41°20'0"N  
41°19'30"N  
41°19'0"N  
41°18'30"N  
41°18'0"N  
41°17'30"N  
41°17'0"N  
41°16'30"N  
41°16'0"N  
41°15'30"N  
41°15'0"N  
41°14'30"N  
41°14'0"N  
41°13'30"N  
41°13'0"N  
41°12'30"N  
41°12'0"N  
41°11'30"N  
41°11'0"N

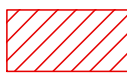
**BUTLER FIRE**  
Incident# - CA-SRF-001388  
Infrared Imagery Map  
Imagery Flown:  
August 18, 2013 - 2112 hours(PDT)  
Interpreted Acres: 16,776 Acres  
IRIN: Bob Brantlinger



**Legend**



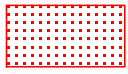
**Heat Perimeter**



**Intense Heat**



**Isolated Heat Source**



**Scattered Heat Source**



0 0.5 1 2 Miles