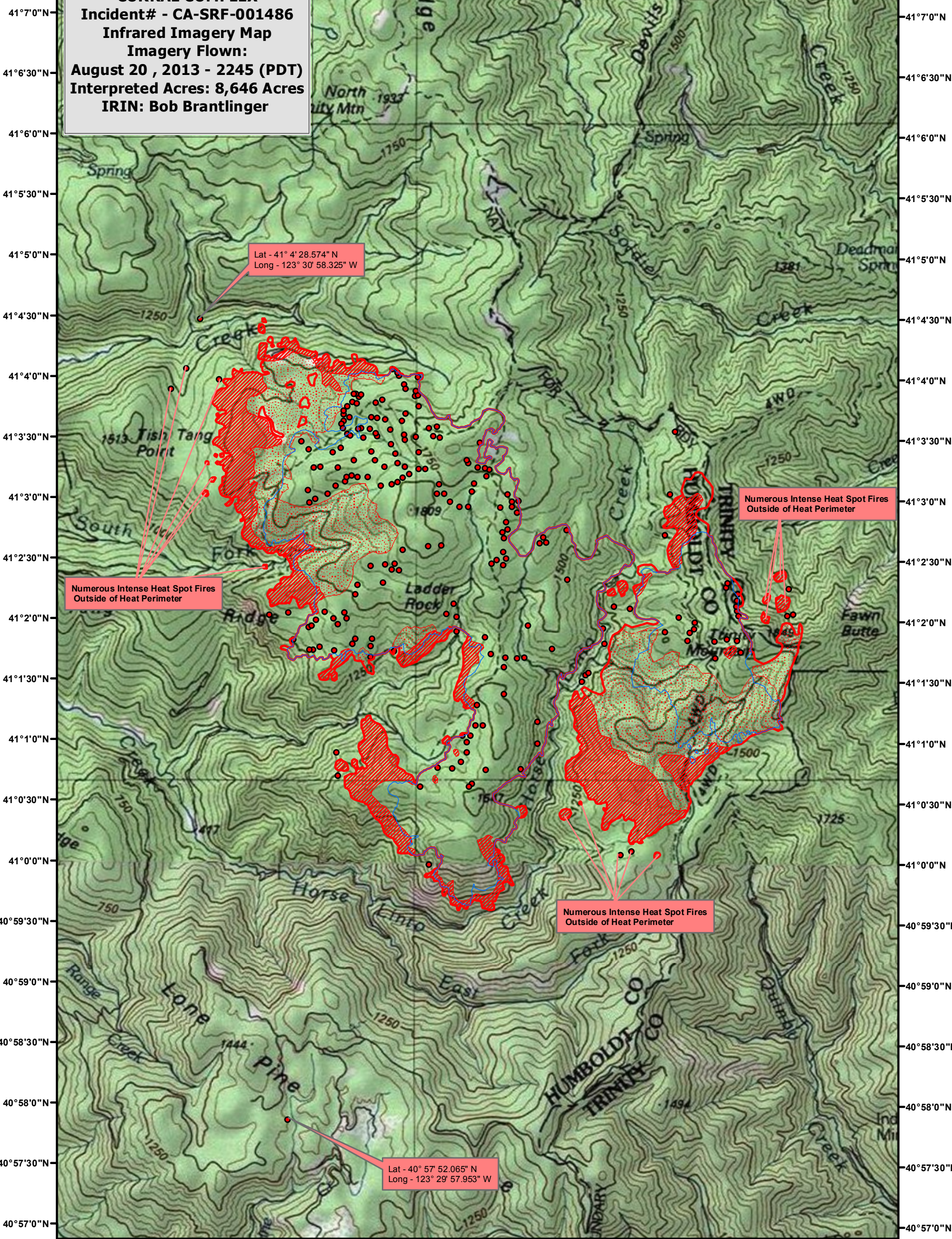


123°32'30"W 123°31'30"W 123°30'30"W 123°29'30"W 123°28'30"W 123°27'30"W 123°26'30"W 123°25'30"W 123°24'30"W 123°23'30"W



CORRAL COMPLEX
 Incident# - CA-SRF-001486
 Infrared Imagery Map
 Imagery Flown:
 August 20 , 2013 - 2245 (PDT)
 Interpreted Acres: 8,646 Acres
 IRIN: Bob Brantlinger

Lat - 41° 4' 28.574" N
 Long - 123° 30' 58.325" W





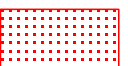
Numerous Intense Heat Spot Fires
 Outside of Heat Perimeter

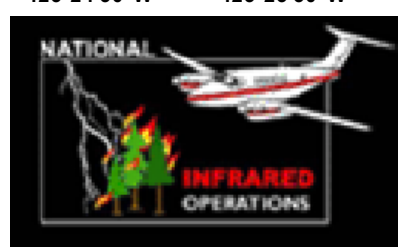
Numerous Intense Heat Spot Fires
 Outside of Heat Perimeter

Numerous Intense Heat Spot Fires
 Outside of Heat Perimeter

Lat - 40° 57' 52.065" N
 Long - 123° 29' 57.953" W

Legend

-  20130819_2353_IR_Heat_Perimeter
-  Heat Perimeter
-  Intense Heat
-  Isolated Heat Source
-  Scattered Heat Source



0 0.5 1 2 Miles