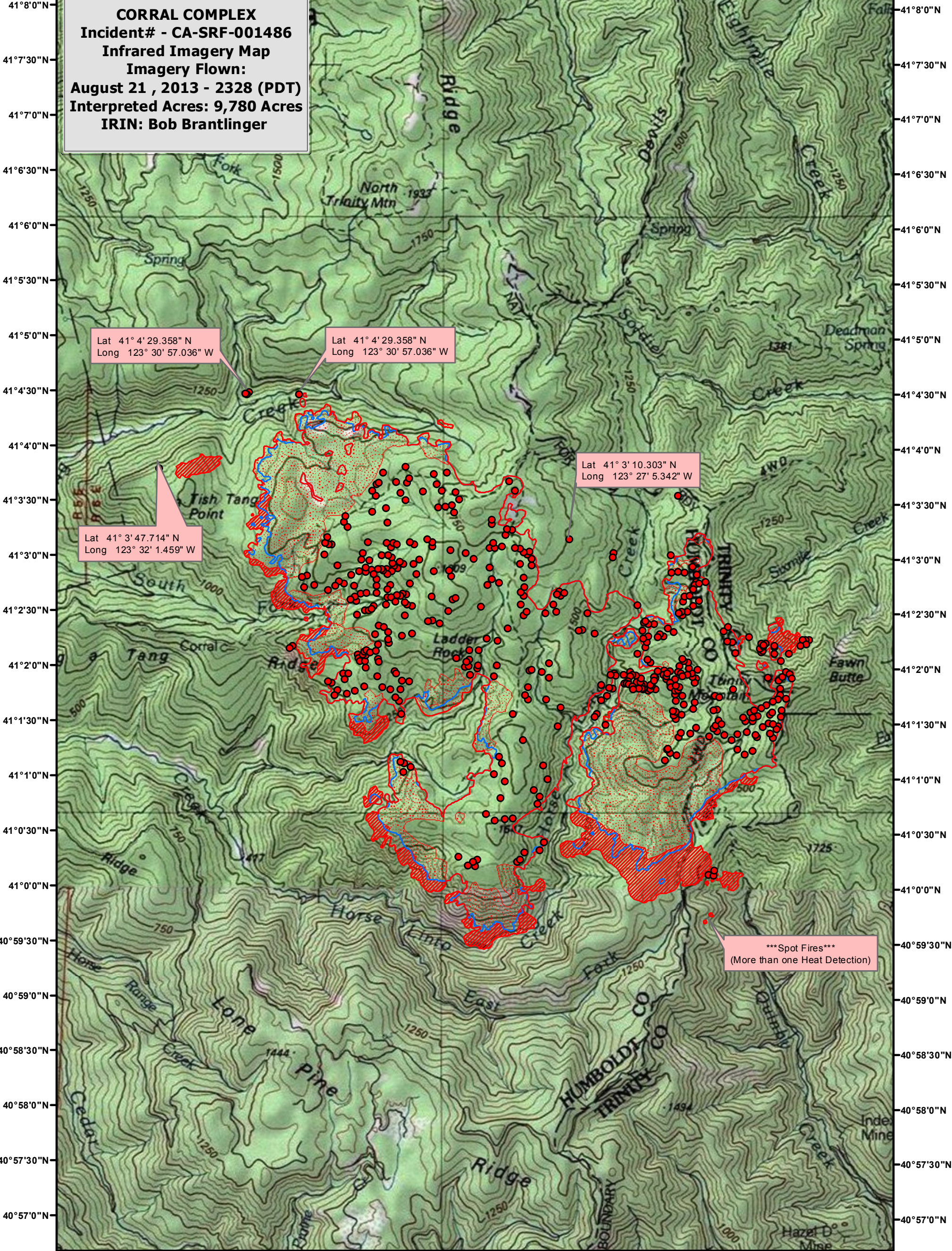


123°32'30"W 123°31'30"W 123°30'30"W 123°29'30"W 123°28'30"W 123°27'30"W 123°26'30"W 123°25'30"W 123°24'30"W 123°23'30"W



CORRAL COMPLEX
 Incident# - CA-SRF-001486
 Infrared Imagery Map
 Imagery Flown:
 August 21, 2013 - 2328 (PDT)
 Interpreted Acres: 9,780 Acres
 IRIN: Bob Brantlinger

Lat 41° 4' 29.358" N
 Long 123° 30' 57.036" W



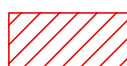


Lat 41° 4' 29.358" N
 Long 123° 30' 57.036" W

Lat 41° 3' 47.714" N
 Long 123° 32' 1.459" W

Lat 41° 3' 10.303" N
 Long 123° 27' 5.342" W

Spot Fires
 (More than one Heat Detection)

Legend

-  20130820_2245_IR_Heat_Perimeter
-  Heat Perimeter
-  Intense Heat
-  Isolated Heat Source
-  Scattered Heat Source

