

123°32'0"W 123°31'0"W 123°30'0"W 123°29'0"W 123°28'0"W 123°27'0"W 123°26'0"W 123°25'0"W 123°24'0"W

CORRAL COMPLEX FIRE INCIDENT

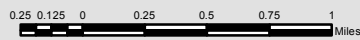
Incident# - CA-SRF-001486





August 29, 2013

Aquisition: August 28, 2013 at 0030 MDT

IR Interpreted Acres: 11,858

IRIN: Renee Jacokes-Mancini

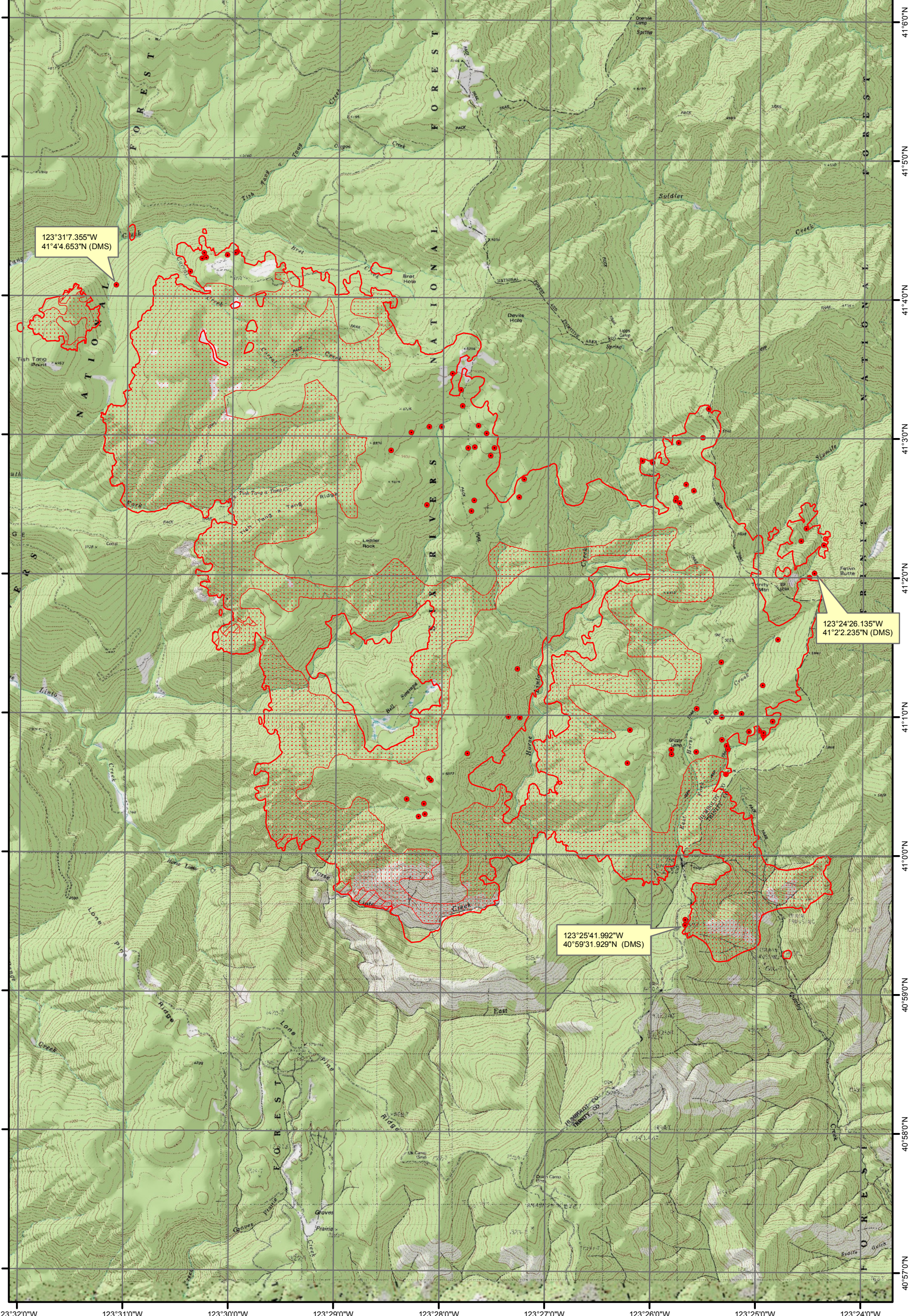


-  Heat Perimeter
 -  Intense Heat Areas
 -  Scattered Heat Areas
 -  Isolated Heat Sources
- NAD 1983 UTM Zone 10N

123°31'7.355"W
41°4'4.653"N (DMS)

123°24'26.135"W
41°2'2.235"N (DMS)

123°25'41.992"W
40°59'31.929"N (DMS)



123°32'0"W 123°31'0"W 123°30'0"W 123°29'0"W 123°28'0"W 123°27'0"W 123°26'0"W 123°25'0"W 123°24'0"W