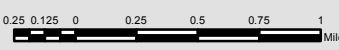






123°32'0"W 123°31'0"W 123°30'0"W 123°29'0"W 123°28'0"W 123°27'0"W 123°26'0"W 123°25'0"W 123°24'0"W

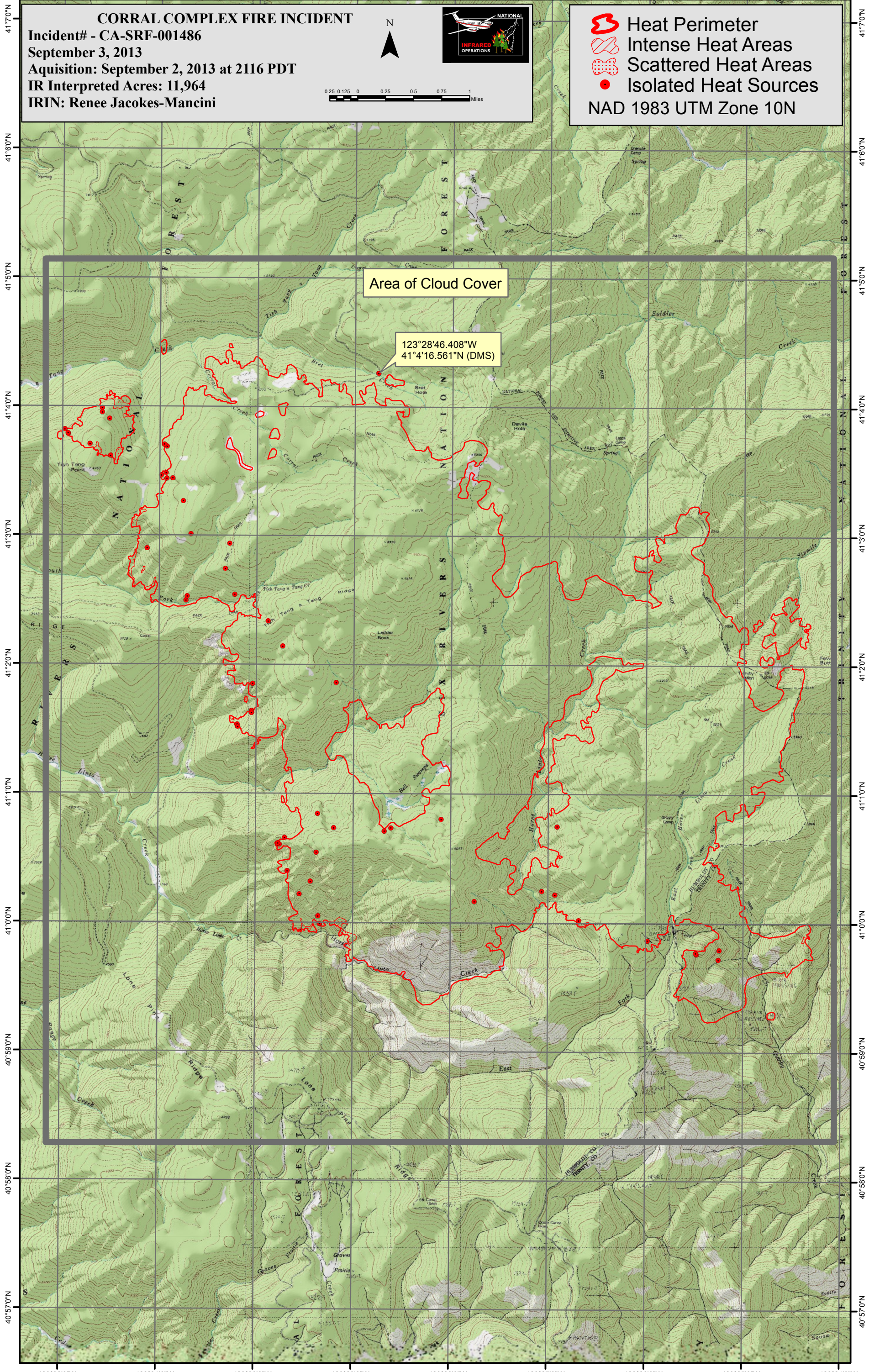
CORRAL COMPLEX FIRE INCIDENT
Incident# - CA-SRF-001486
September 3, 2013
Aquisition: September 2, 2013 at 2116 PDT
IR Interpreted Acres: 11,964
IRIN: Renee Jacokes-Mancini



-  Heat Perimeter
 -  Intense Heat Areas
 -  Scattered Heat Areas
 -  Isolated Heat Sources
- NAD 1983 UTM Zone 10N

Area of Cloud Cover

123°28'46.408"W
41°4'16.561"N (DMS)



123°32'0"W 123°31'0"W 123°30'0"W 123°29'0"W 123°28'0"W 123°27'0"W 123°26'0"W 123°25'0"W 123°24'0"W