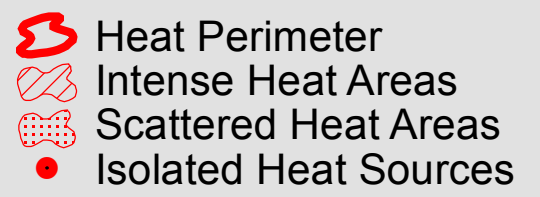





123°32'0"W 123°31'0"W 123°30'0"W 123°29'0"W 123°28'0"W 123°27'0"W 123°26'0"W 123°25'0"W 123°24'0"W

41°7'0"N  
41°6'0"N  
41°5'0"N  
41°4'0"N  
41°3'0"N  
41°2'0"N  
41°1'0"N  
41°0'0"N  
40°59'0"N  
40°58'0"N  
40°57'0"N

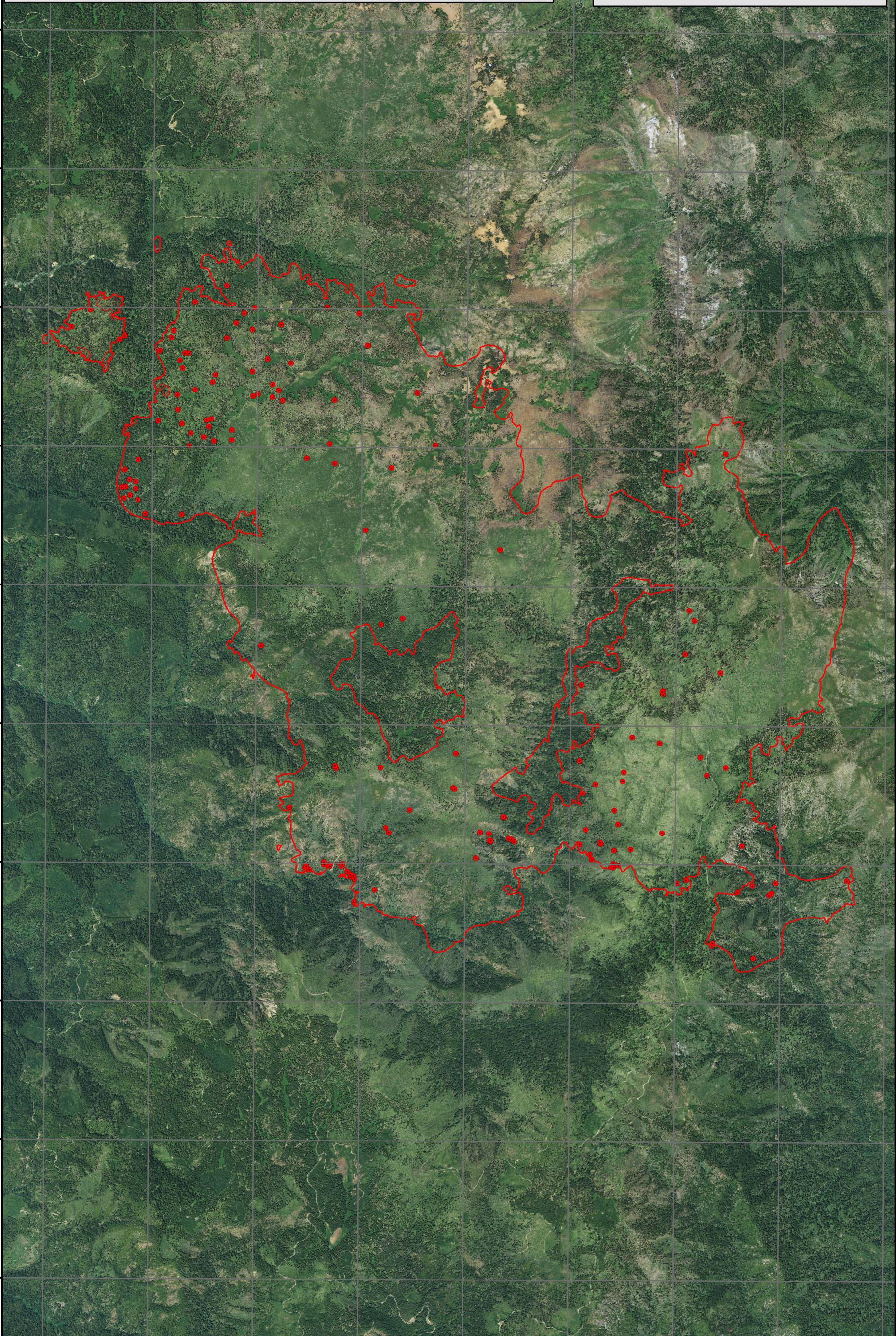
41°7'0"N  
41°6'0"N  
41°5'0"N  
41°4'0"N  
41°3'0"N  
41°2'0"N  
41°1'0"N  
41°0'0"N  
40°59'0"N  
40°58'0"N  
40°57'0"N

**CORRAL COMPLEX FIRE INCIDENT**  
Incident# - CA-SRF-001486  
September 4, 2013  
Aquisition: September 3, 2013 at 2203 PDT  
IR Interpreted Acres: 12,266  
IRIN: Renee Jacokes-Mancini



- Heat Perimeter
- Intense Heat Areas
- Scattered Heat Areas
- Isolated Heat Sources

NAD 1983 UTM Zone 10N



123°32'0"W 123°31'0"W 123°30'0"W 123°29'0"W 123°28'0"W 123°27'0"W 123°26'0"W 123°25'0"W 123°24'0"W