

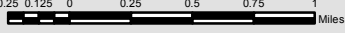
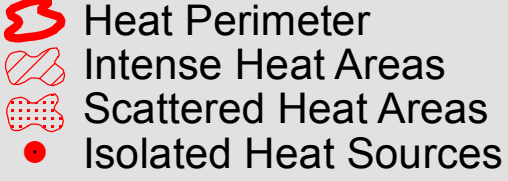






123°32'0"W 123°31'0"W 123°30'0"W 123°29'0"W 123°28'0"W 123°27'0"W 123°26'0"W 123°25'0"W 123°24'0"W

41°7'0"N
41°6'0"N
41°5'0"N
41°4'0"N
41°3'0"N
41°2'0"N
41°1'0"N
41°0'0"N
40°59'0"N
40°58'0"N
40°57'0"N

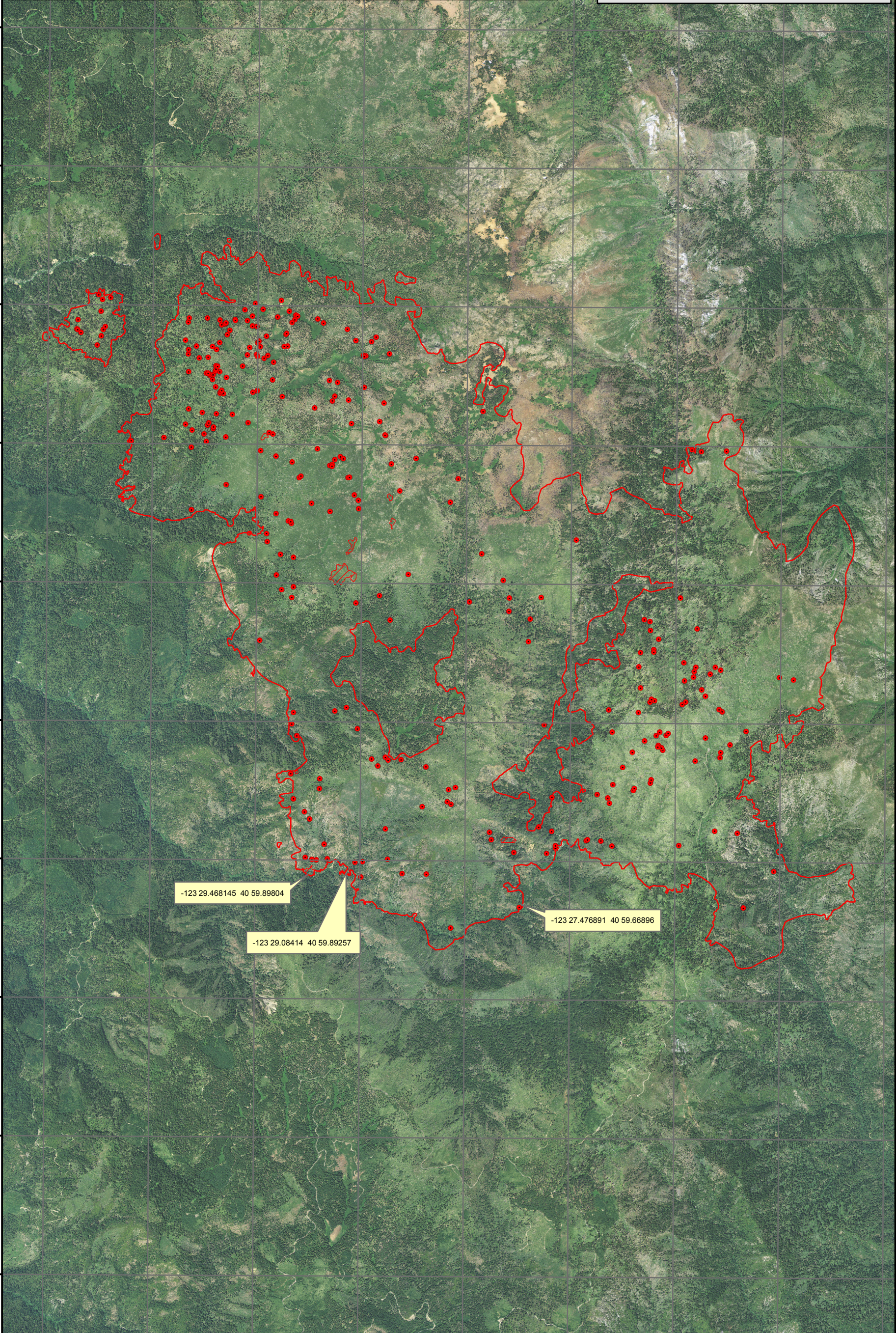
41°7'0"N
41°6'0"N
41°5'0"N
41°4'0"N
41°3'0"N
41°2'0"N
41°1'0"N
41°0'0"N
40°59'0"N
40°58'0"N
40°57'0"N

CORRAL COMPLEX FIRE INCIDENT
 Incident# CA-SRF-001486
 September 10, 2013
 Aquisition: September 9, 2013 at 2051 PDT
 IR Interpreted Acres: 12,299
 IRIN: Renee Jacokes-Mancini

-  Heat Perimeter
-  Intense Heat Areas
-  Scattered Heat Areas
-  Isolated Heat Sources

NAD 1983 UTM Zone 10N



-123 29.468145 40 59.89804

-123 29.08414 40 59.89257

-123 27.476891 40 59.66896

123°32'0"W 123°31'0"W 123°30'0"W 123°29'0"W 123°28'0"W 123°27'0"W 123°26'0"W 123°25'0"W 123°24'0"W