

123°32'W 123°31'W 123°30'W 123°29'W 123°28'W 123°27'W 123°26'W 123°25'W 123°24'W

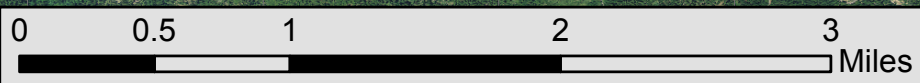
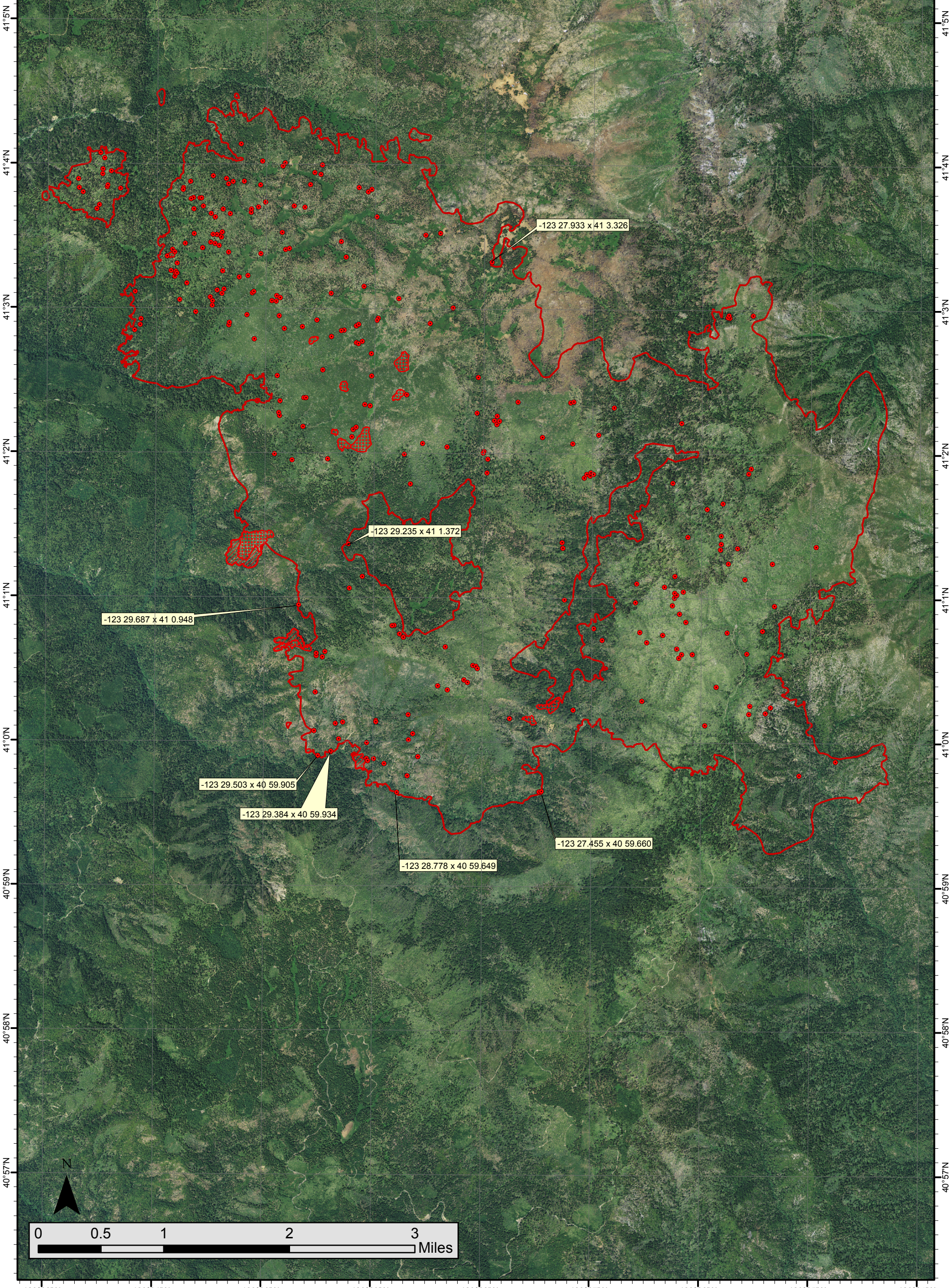
Corral Complex IR Map

CA-SRF-001486
September 11, 2013
Flown: Sept. 11, 2013 at 2138 PDT
IR Interpreted Size: 12,367 Acres
IRIN: Elise Bowne



Datum: NAD83

- Isolated Heat Sources
- ▨ Scattered Heat
- ▨ Intense Heat
- Heat Perimeter



123°32'W 123°31'W 123°30'W 123°29'W 123°28'W 123°27'W 123°26'W 123°25'W 123°24'W