

123°32'W 123°31'W 123°30'W 123°29'W 123°28'W 123°27'W 123°26'W 123°25'W

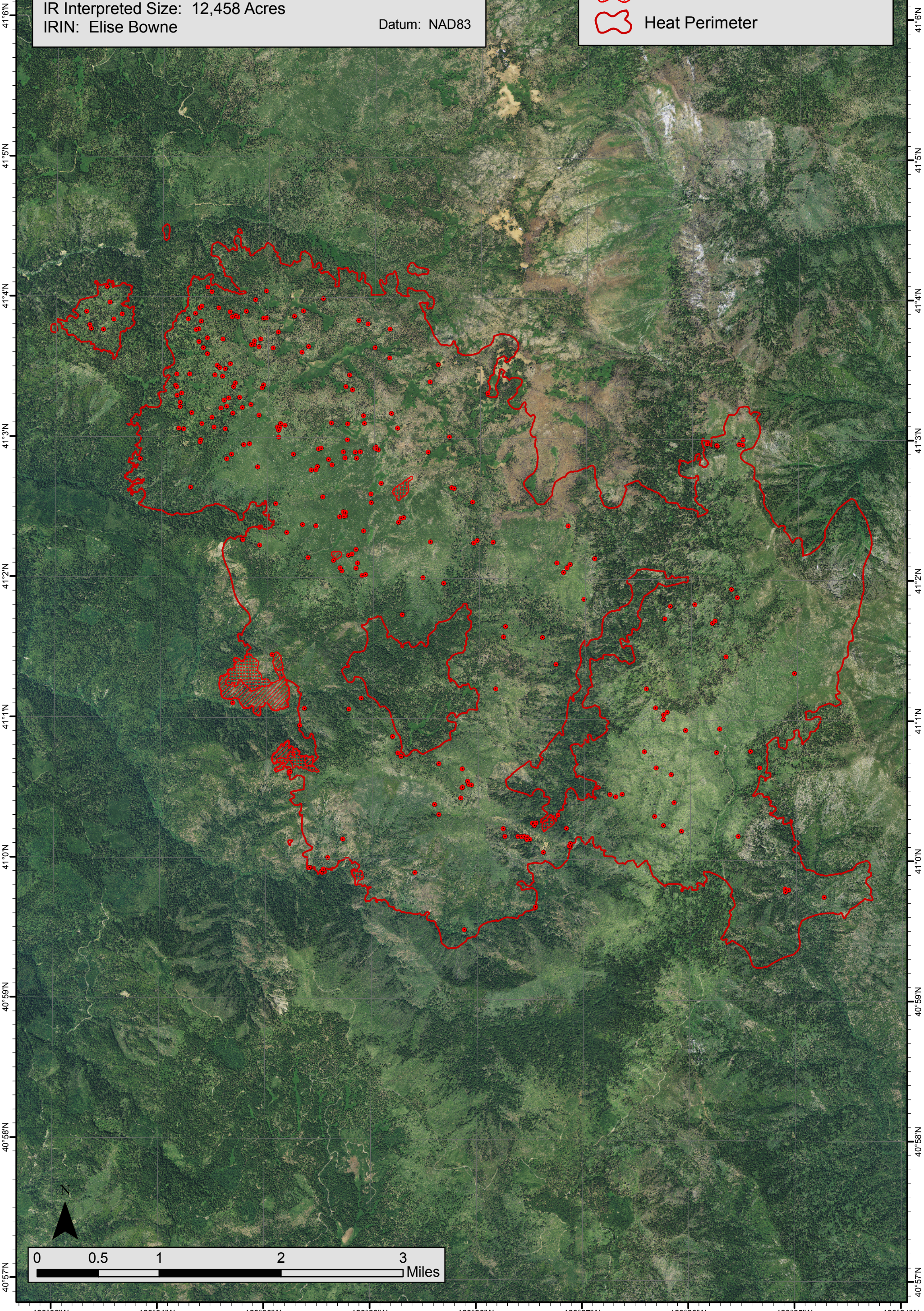
# Corral Complex IR Map

CA-SRF-001486  
September 13, 2013  
Flown: Sept. 12, 2013 at 2149 PDT  
IR Interpreted Size: 12,458 Acres  
IRIN: Elise Bowne



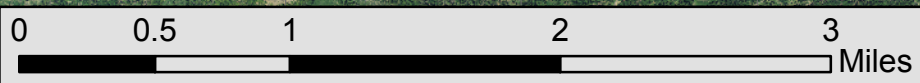
Datum: NAD83

- Isolated Heat Sources
- Scattered Heat
- Intense Heat
- Heat Perimeter



41°6'N  
41°5'N  
41°4'N  
41°3'N  
41°2'N  
41°1'N  
41°0'N  
40°59'N  
40°58'N  
40°57'N

41°6'N  
41°5'N  
41°4'N  
41°3'N  
41°2'N  
41°1'N  
41°0'N  
40°59'N  
40°58'N  
40°57'N



123°32'W 123°31'W 123°30'W 123°29'W 123°28'W 123°27'W 123°26'W 123°25'W 123°24'W