

123°32'W 123°31'W 123°30'W 123°29'W 123°28'W 123°27'W 123°26'W 123°25'W

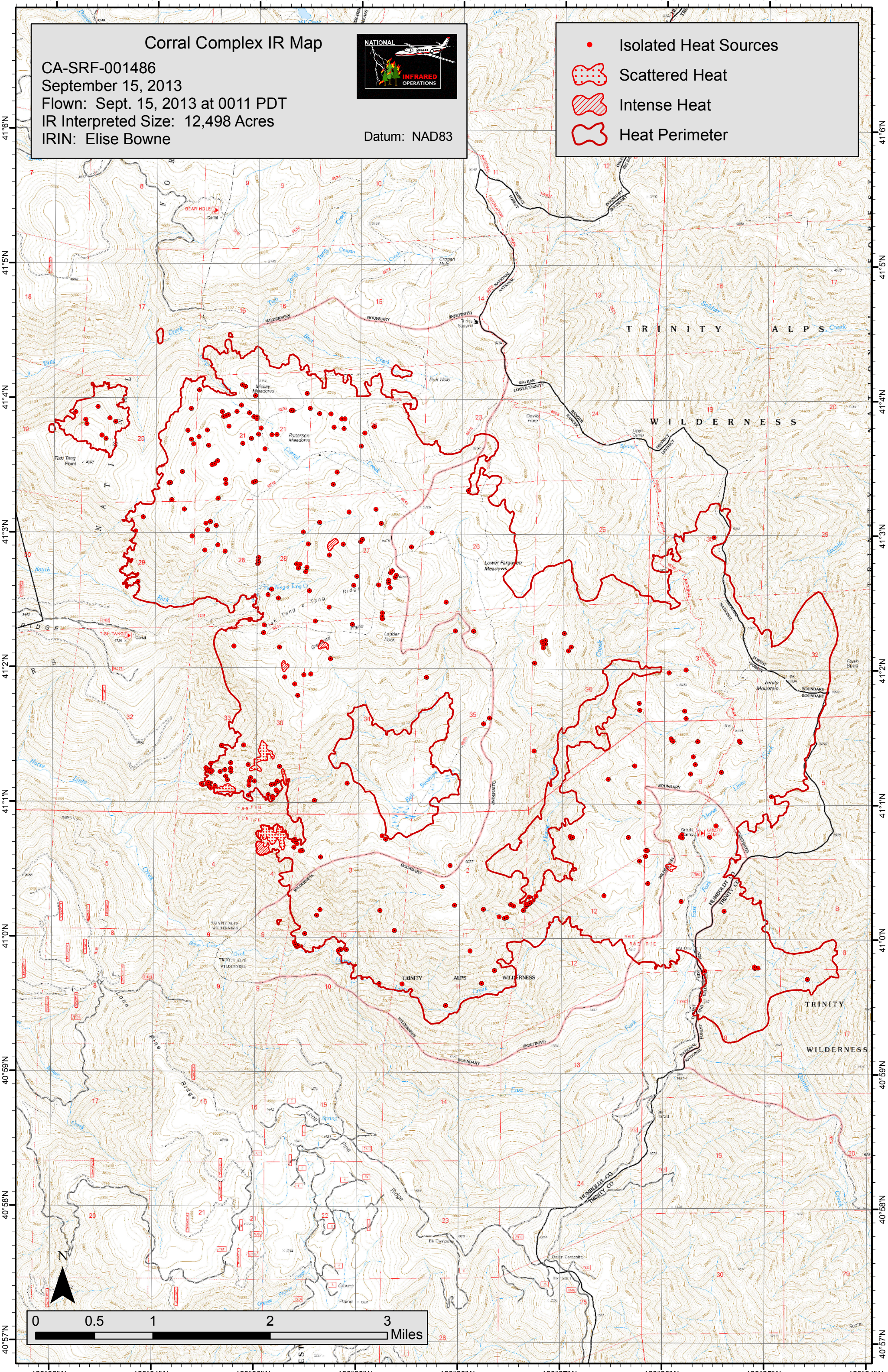
Corral Complex IR Map

CA-SRF-001486
September 15, 2013
Flown: Sept. 15, 2013 at 0011 PDT
IR Interpreted Size: 12,498 Acres
IRIN: Elise Bowne



Datum: NAD83

- Isolated Heat Sources
- Scattered Heat
- Intense Heat
- Heat Perimeter



123°32'W 123°31'W 123°30'W 123°29'W 123°28'W 123°27'W 123°26'W 123°25'W 123°24'W

41°6'N
41°5'N
41°4'N
41°3'N
41°2'N
41°1'N
41°0'N
40°59'N
40°58'N
40°57'N

41°6'N
41°5'N
41°4'N
41°3'N
41°2'N
41°1'N
41°0'N
40°59'N
40°58'N
40°57'N