

120°40'W

120°39'W

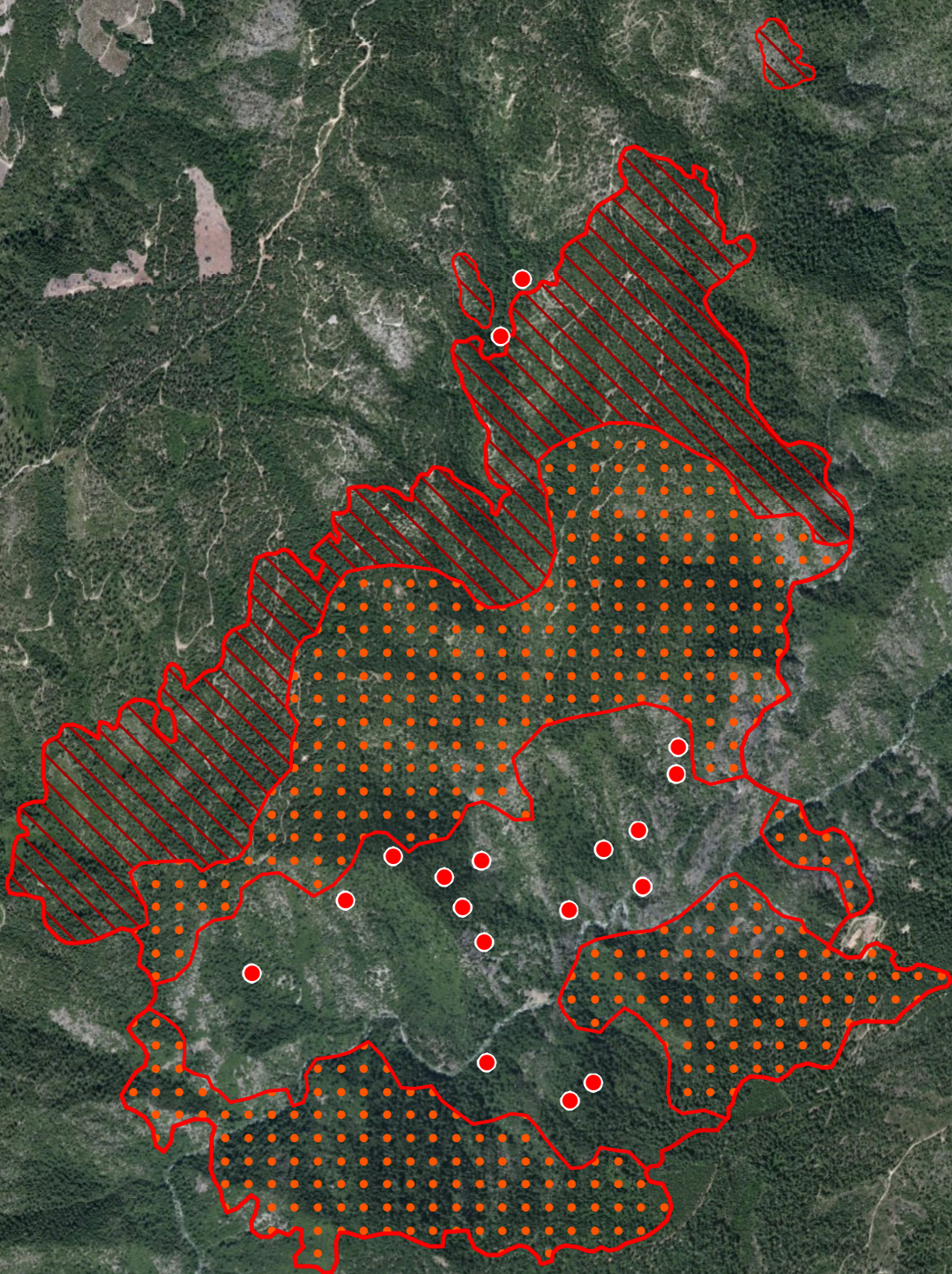
120°38'W

120°37'W

39°10'N
39°9'N
39°8'N
39°7'N
39°6'N
39°5'N





39°10'N
39°9'N
39°8'N
39°7'N
39°6'N
39°5'N

American Fire
CA-TNF-001562
Infrared Interpretation
Imagery Date:
08/12/2013 2212 Hrs
Heat acres: 1,848



IRIN: Joe Larson
Map produced:
8/13/2013 0053 hrs



-  Heat Perimeter
-  Intense Heat Areas
-  Scattered Heat Areas
-  Isolated Heat Sources

NAD 1983 UTM Zone 10N

Miles GeoEye, Earthstar, USDA, USGS, AEX, Getmapping, Aerogrid, IGN, IGP, and the GIS User Community

120°40'W

120°39'W

120°38'W

120°37'W