

120°40'W

120°39'W

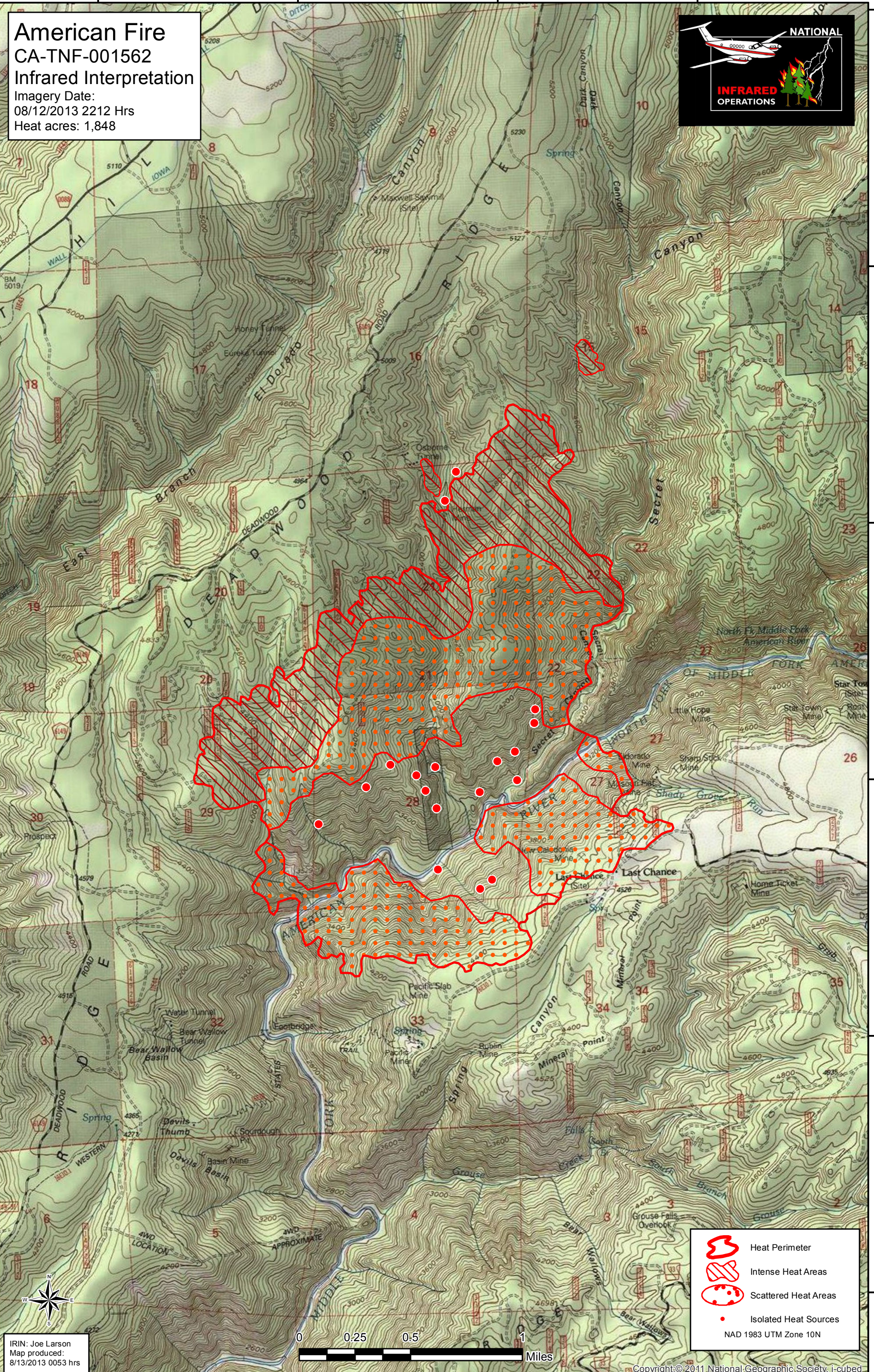
120°38'W





120°37'W

39°10'N
39°9'N
39°8'N
39°7'N
39°6'N
39°5'N

39°10'N
39°9'N
39°8'N
39°7'N
39°6'N
39°5'N

American Fire
CA-TNF-001562
Infrared Interpretation
 Imagery Date:
 08/12/2013 2212 Hrs
 Heat acres: 1,848



-  Heat Perimeter
-  Intense Heat Areas
-  Scattered Heat Areas
-  Isolated Heat Sources

NAD 1983 UTM Zone 10N

IRIN: Joe Larson
 Map produced:
 8/13/2013 0053 hrs

