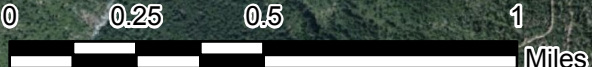
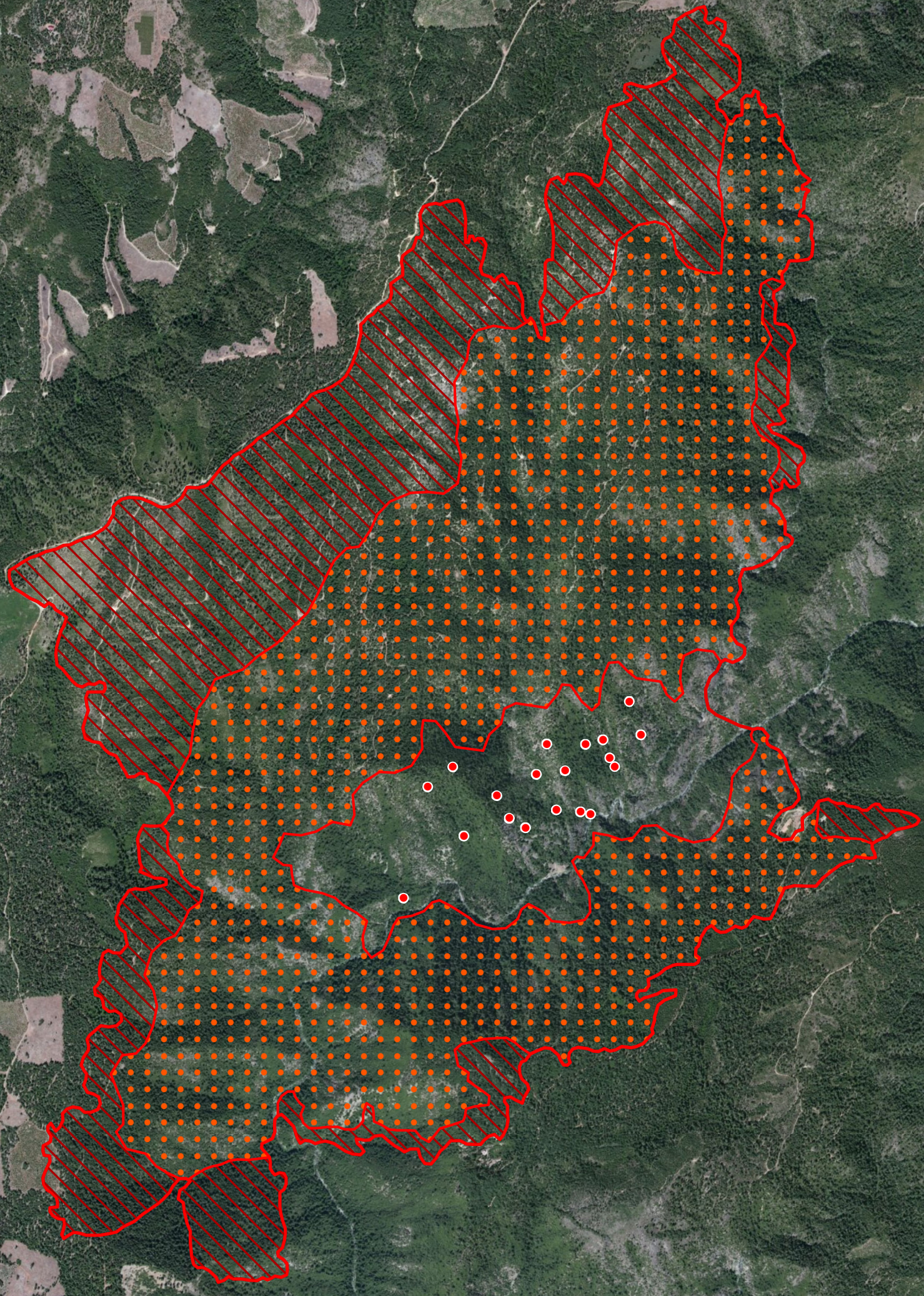
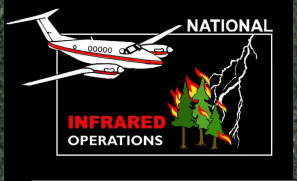






120°40'W 120°39'W 120°38'W 120°37'W

39°10'N 39°9'N 39°8'N 39°7'N 39°6'N 39°5'N

**American Fire**  
CA-TNF-001562  
Infrared Interpretation  
Imagery Date:  
08/14/2013 Hrs  
Heat acres: 3,674



-  Heat Perimeter
-  Intense Heat Areas
-  Scattered Heat Areas
-  Isolated Heat Sources

NAD 1983 UTM Zone 10N

IRIN: Joe Larson  
Map produced:  
8/14/2013 0248 hrs

Source: Esri, DigitalGlobe, GeoEye, Earthstar, USDA, USGS, AEX, Getmapping, Aerogrid, IGN, IGP, swisstopo, and the GIS User Community

120°40'W 120°39'W 120°38'W 120°37'W