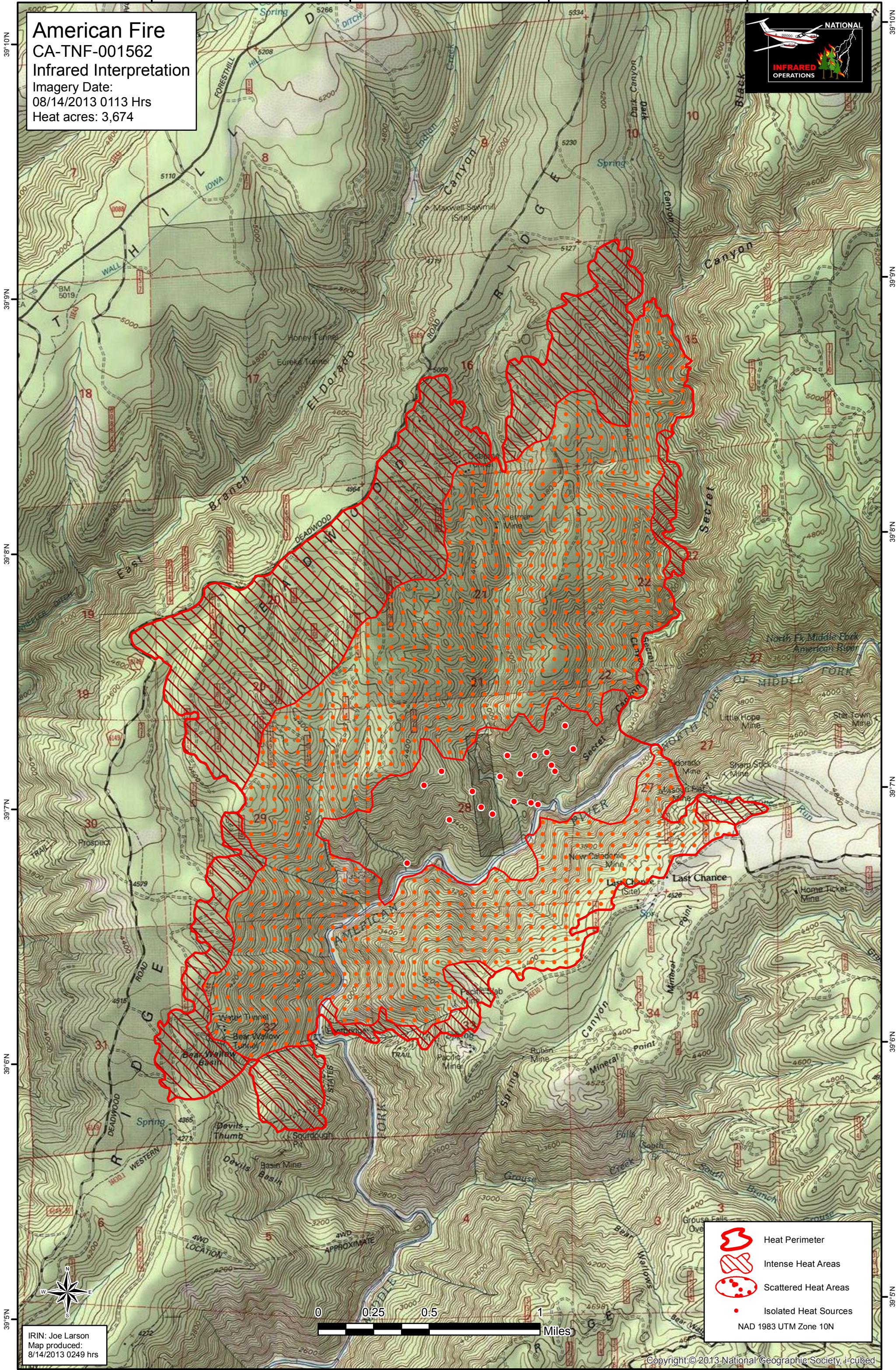






120°40'W 120°39'W 120°38'W 120°37'W

American Fire
CA-TNF-001562
Infrared Interpretation
Imagery Date:
08/14/2013 0113 Hrs
Heat acres: 3,674



39°10'N
39°9'N
39°8'N
39°7'N
39°6'N
39°5'N

120°40'W
120°39'W
120°38'W
120°37'W

-  Heat Perimeter
-  Intense Heat Areas
-  Scattered Heat Areas
-  Isolated Heat Sources

NAD 1983 UTM Zone 10N

IRIN: Joe Larson
Map produced:
8/14/2013 0249 hrs

