

120°40'W

120°39'W

120°38'W

120°37'W

39°10'N

39°9'N

39°8'N

39°7'N

39°6'N

39°5'N

39°10'N

39°9'N

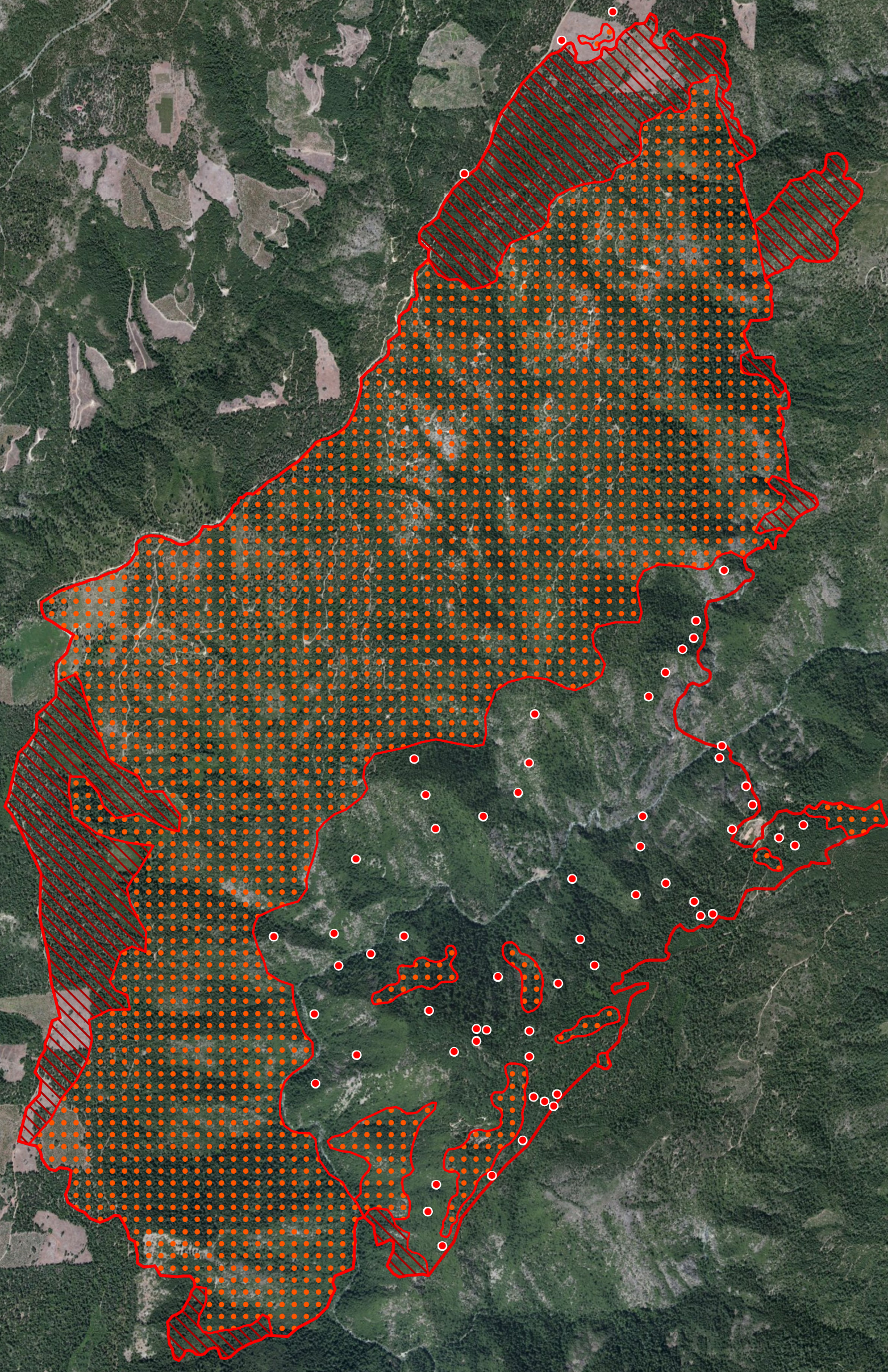
39°8'N





39°7'N

39°6'N

39°5'N

American Fire
 CA-TNF-001562
 Infrared Interpretation
 Imagery Date:
 08/15/2013 0215 Hrs
 Heat acres: 4,915

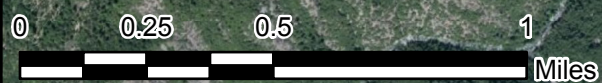


-  Heat Perimeter
-  Intense Heat Areas
-  Scattered Heat Areas
-  Isolated Heat Sources

NAD 1983 UTM Zone 10N



IRIN: Joe Larson
 Map produced:
 8/15/2013 0358 hrs



Source: Esri, DigitalGlobe, GeoEye, i-cubed, USDA, USGS, AEX, Getmapping, Aerogrid, IGN, IGP, swisstopo, and the GIS User Community

120°40'W

120°39'W

120°38'W

120°37'W