

120°40'W

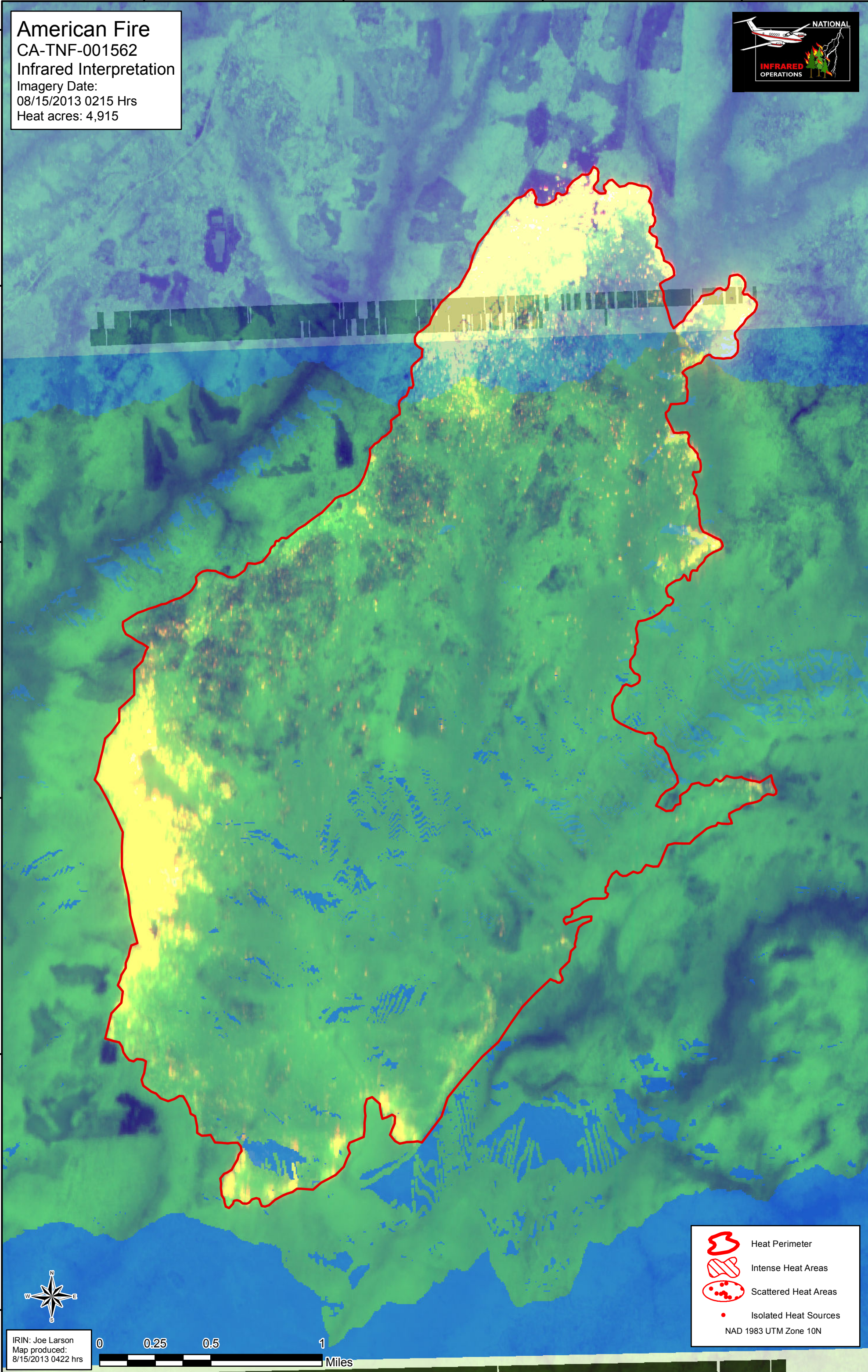
120°39'W





120°38'W

120°37'W

39°10'N  
39°9'N  
39°8'N  
39°7'N  
39°6'N  
39°5'N

American Fire  
CA-TNF-001562  
Infrared Interpretation  
Imagery Date:  
08/15/2013 0215 Hrs  
Heat acres: 4,915



-  Heat Perimeter
-  Intense Heat Areas
-  Scattered Heat Areas
-  Isolated Heat Sources

NAD 1983 UTM Zone 10N



IRIN: Joe Larson  
Map produced:  
8/15/2013 0422 hrs



120°40'W

120°39'W

120°38'W

120°37'W