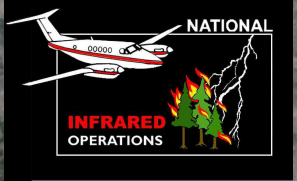


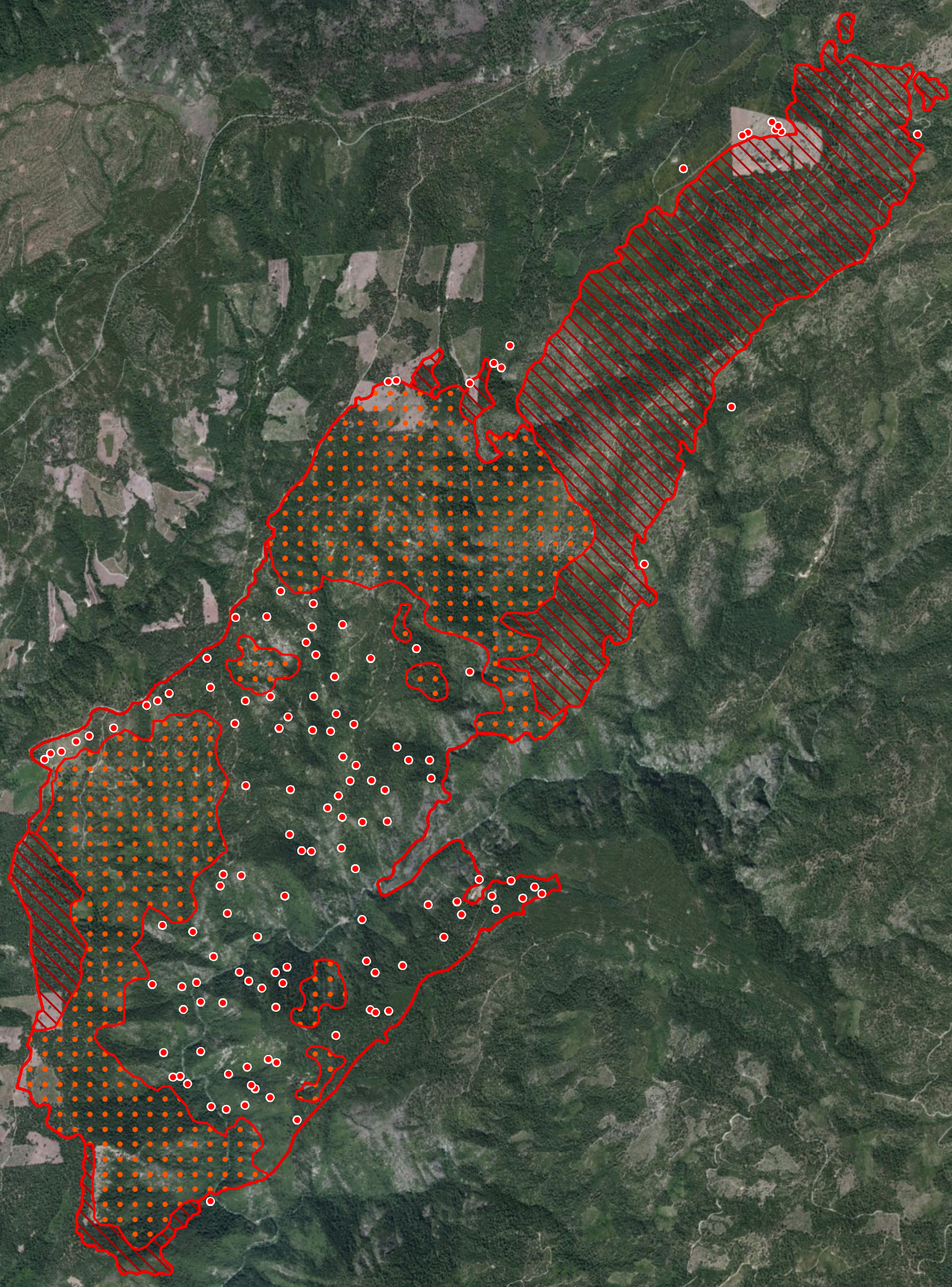
120°40'W 120°39'W 120°38'W 120°37'W 120°36'W 120°35'W 120°34'W

American Fire  
CA-TNF-001562  
Infrared Interpretation  
Imagery Date:  
08/15/2013 1950 Hrs  
Heat acres: 7,367



39°12'N  
39°11'N  
39°10'N  
39°9'N  
39°8'N  
39°7'N  
39°6'N  
39°5'N  
39°4'N





39°12'N  
39°11'N  
39°10'N  
39°9'N  
39°8'N  
39°7'N  
39°6'N  
39°5'N  
39°4'N



IRIN: Joe Larson  
Map produced:  
8/15/2013 2146 hrs



Source: Esri, DigitalGlobe, GeoEye, i-cubed, USDA, USGS, AEX, Getmapping, Aerogrid, IGN, IGP, swisstopo, and the GIS User Community

-  Heat Perimeter
-  Intense Heat Areas
-  Scattered Heat Areas
-  Isolated Heat Sources

NAD 1983 UTM Zone 10N