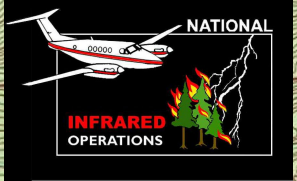


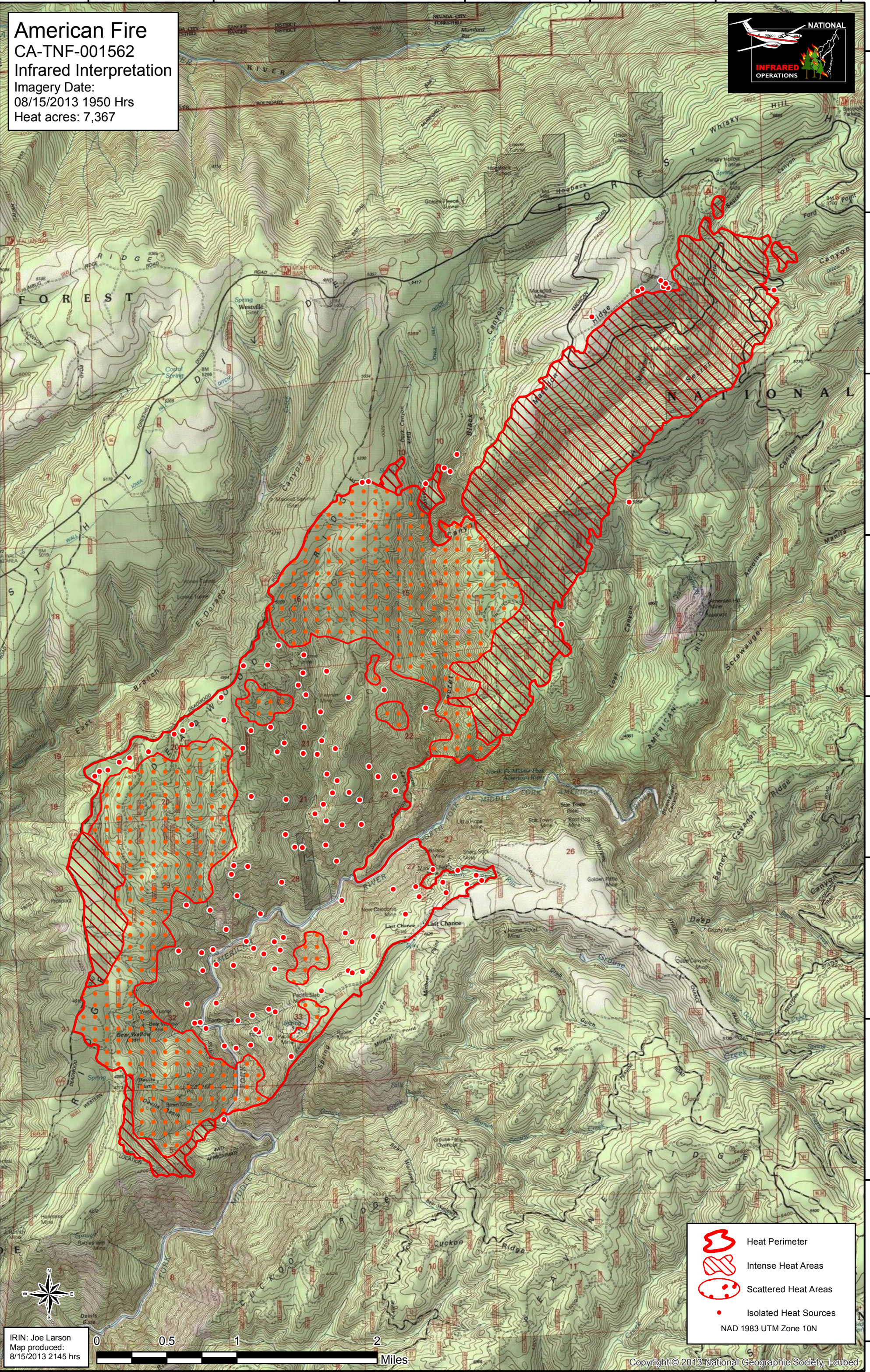
120°40'W 120°39'W 120°38'W 120°37'W 120°36'W 120°35'W 120°34'W





American Fire
CA-TNF-001562
Infrared Interpretation
Imagery Date:
08/15/2013 1950 Hrs
Heat acres: 7,367



39°12'N
39°11'N
39°10'N
39°9'N
39°8'N
39°7'N
39°6'N
39°5'N
39°4'N

39°12'N
39°11'N
39°10'N
39°9'N
39°8'N
39°7'N
39°6'N
39°5'N
39°4'N



-  Heat Perimeter
-  Intense Heat Areas
-  Scattered Heat Areas
-  Isolated Heat Sources

NAD 1983 UTM Zone 10N

IRIN: Joe Larson
Map produced:
8/15/2013 2145 hrs

