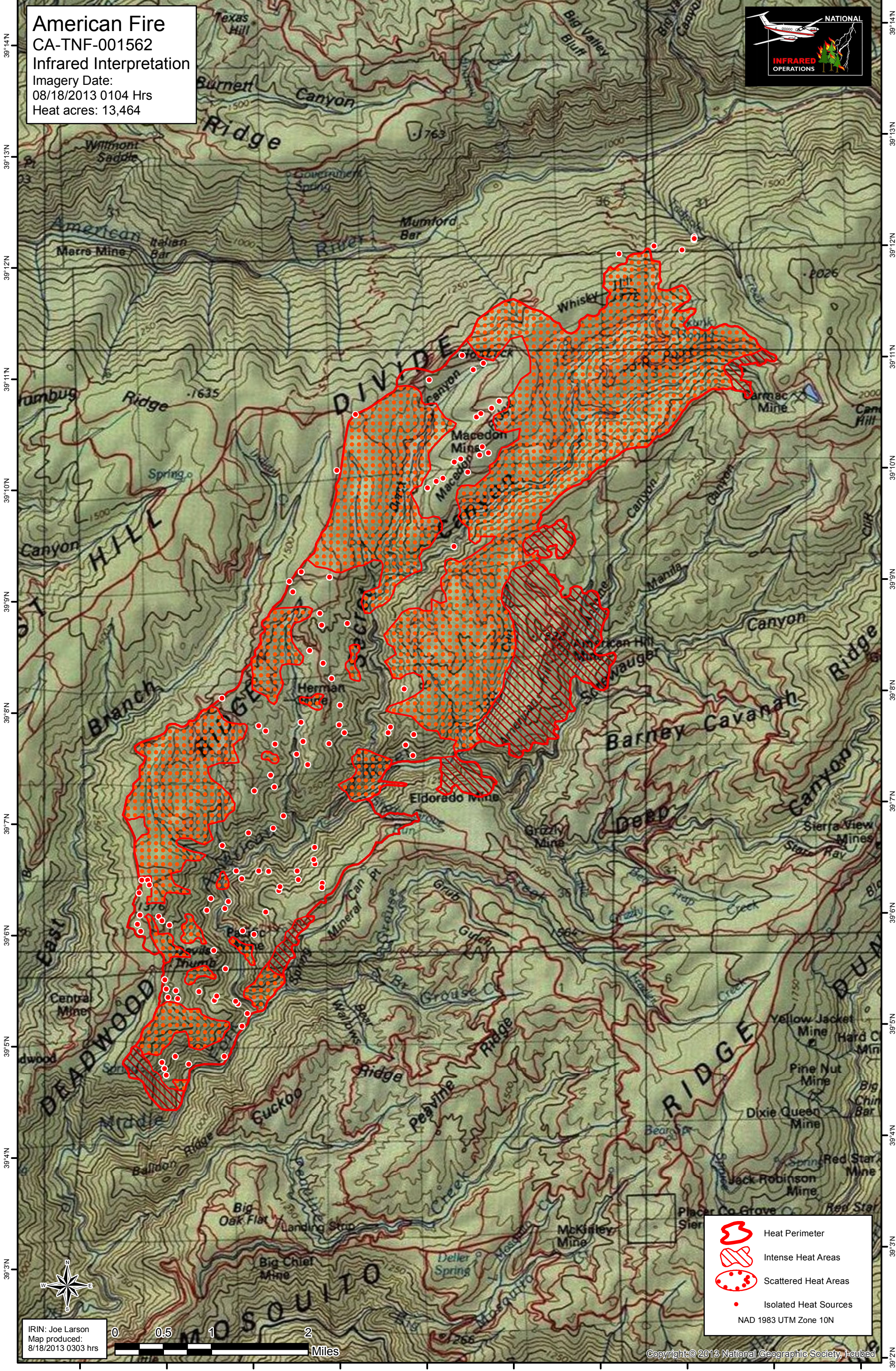


120°41'W 120°40'W 120°39'W 120°38'W 120°37'W 120°36'W 120°35'W 120°34'W 120°33'W 120°32'W

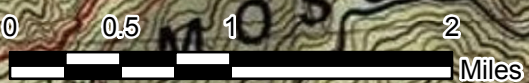
American Fire  
CA-TNF-001562  
Infrared Interpretation  
Imagery Date:  
08/18/2013 0104 Hrs  
Heat acres: 13,464







39°14'N  
39°13'N  
39°12'N  
39°11'N  
39°10'N  
39°9'N  
39°8'N  
39°7'N  
39°6'N  
39°5'N  
39°4'N  
39°3'N  
39°2'N

39°14'N  
39°13'N  
39°12'N  
39°11'N  
39°10'N  
39°9'N  
39°8'N  
39°7'N  
39°6'N  
39°5'N  
39°4'N  
39°3'N  
39°2'N

IRIN: Joe Larson  
Map produced:  
8/18/2013 0303 hrs



-  Heat Perimeter
  -  Intense Heat Areas
  -  Scattered Heat Areas
  -  Isolated Heat Sources
- NAD 1983 UTM Zone 10N