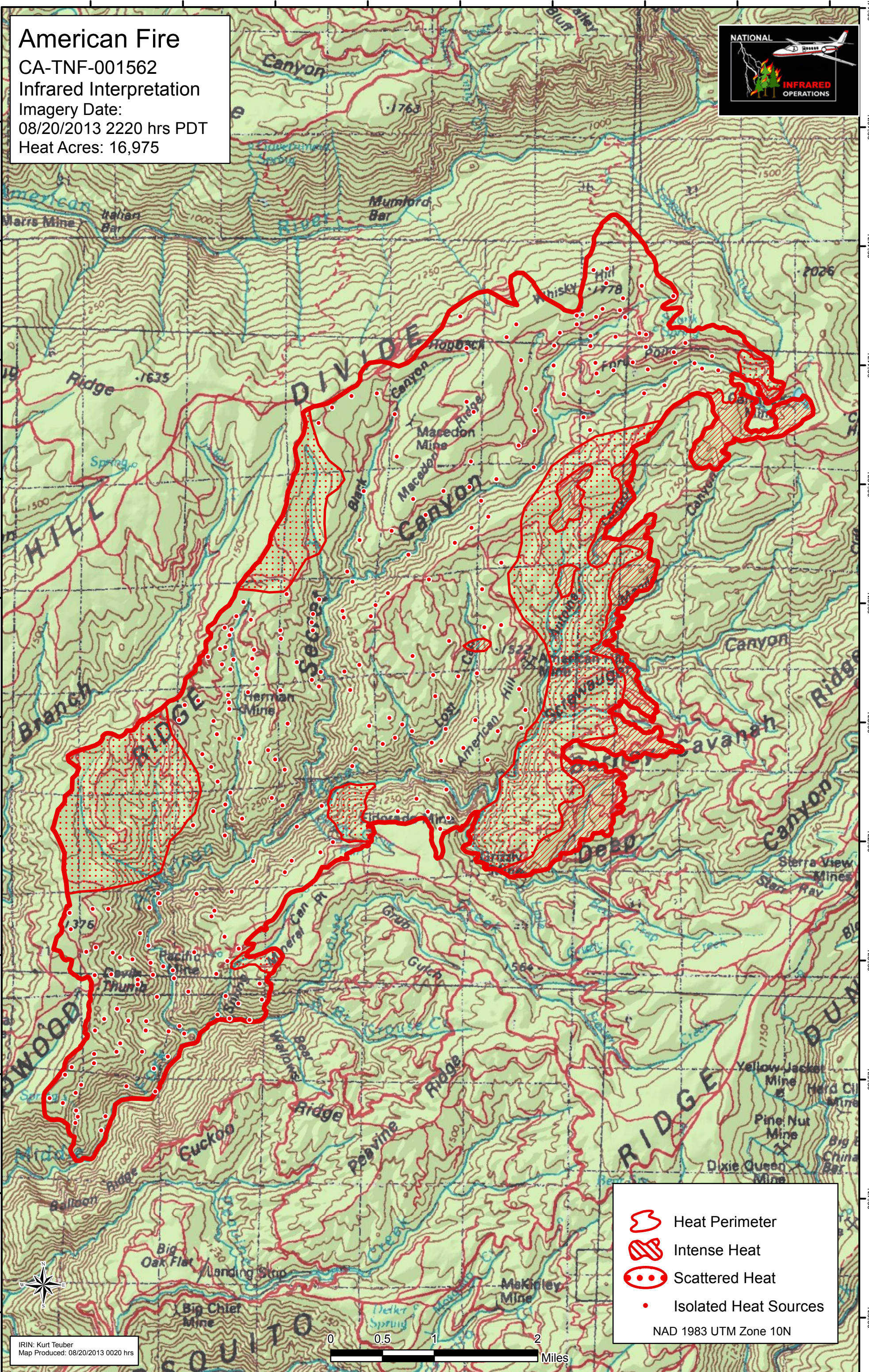


120°40'W 120°38'W 120°38'W 120°37'W 120°36'W 120°35'W 120°34'W 120°33'W 120°32'W

American Fire
CA-TNF-001562
Infrared Interpretation
Imagery Date:
08/20/2013 2220 hrs PDT
Heat Acres: 16,975



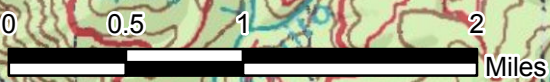
39°13'N
39°11'N
39°11'N
39°10'N
39°10'N
39°8'N
39°8'N
39°7'N
39°7'N
39°6'N
39°6'N
39°5'N
39°5'N
39°4'N
39°4'N
39°3'N
39°3'N



- Heat Perimeter
- Intense Heat
- Scattered Heat
- Isolated Heat Sources

NAD 1983 UTM Zone 10N

IRIN: Kurt Teuber
Map Produced: 08/20/2013 0020 hrs



120°40'W 120°38'W 120°38'W 120°37'W 120°36'W 120°35'W 120°34'W 120°33'W 120°32'W