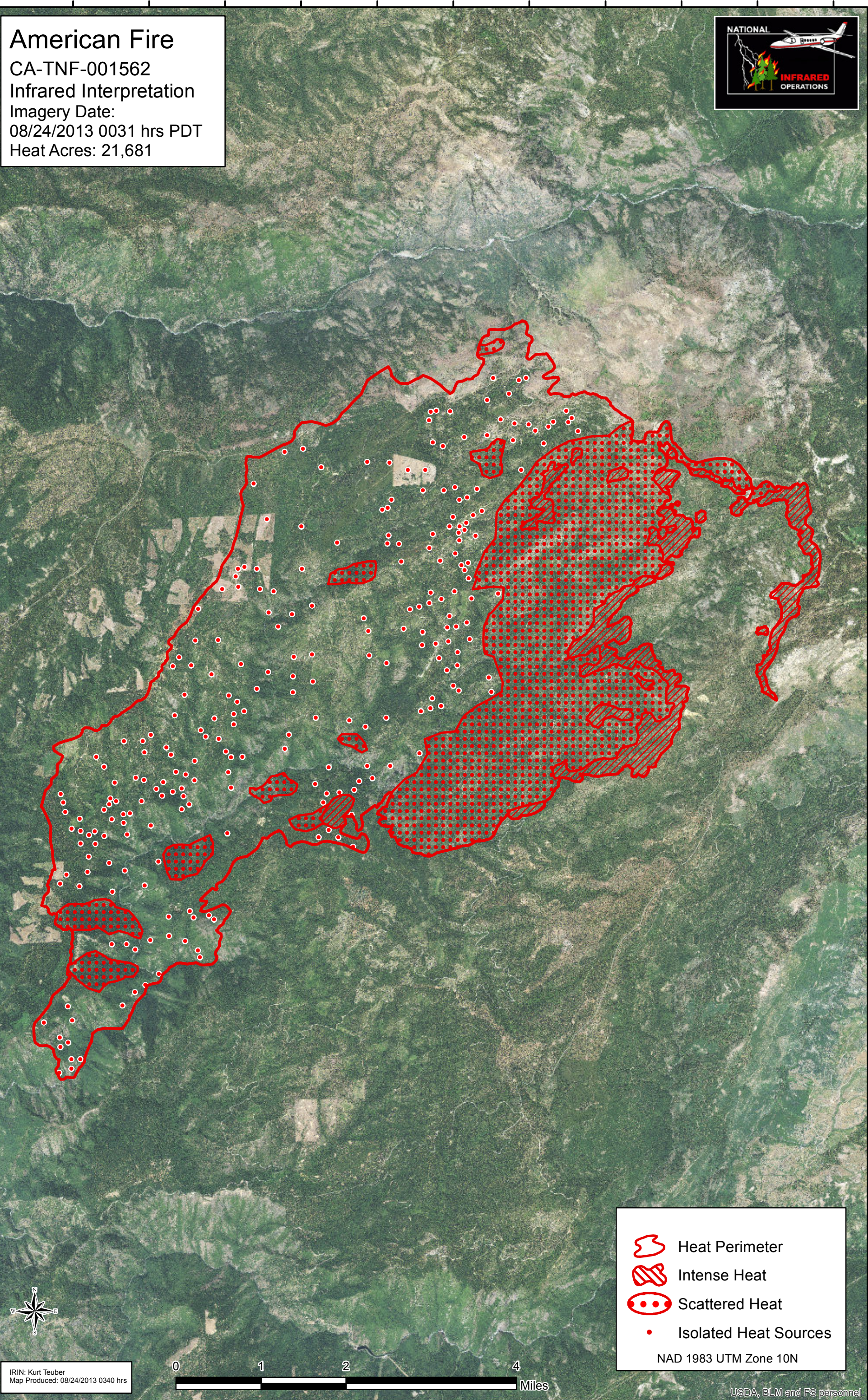


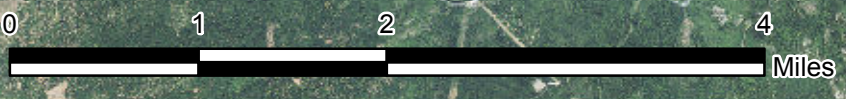
120°41'W 120°40'W 120°38'W 120°38'W 120°37'W 120°36'W 120°35'W 120°34'W 120°33'W 120°32'W 120°31'W 120°30'W





39°15'N 39°14'N 39°13'N 39°11'N 39°11'N 39°10'N 39°10'N 39°8'N 39°8'N 39°8'N 39°7'N 39°7'N 39°6'N 39°6'N 39°5'N 39°5'N 39°4'N 39°4'N 39°3'N 39°3'N 39°2'N 39°2'N 39°1'N

American Fire
CA-TNF-001562
Infrared Interpretation
Imagery Date:
08/24/2013 0031 hrs PDT
Heat Acres: 21,681



IRIN: Kurt Teuber
Map Produced: 08/24/2013 0340 hrs



-  Heat Perimeter
-  Intense Heat
-  Scattered Heat
-  Isolated Heat Sources

NAD 1983 UTM Zone 10N

USDA, ELM and FS personnel