

120°41'W 120°40'W 120°38'W 120°38'W 120°37'W 120°36'W 120°35'W 120°34'W 120°33'W 120°32'W 120°31'W 120°30'W

American Fire

CA-TNF-001562

Infrared Interpretation

Imagery Date:

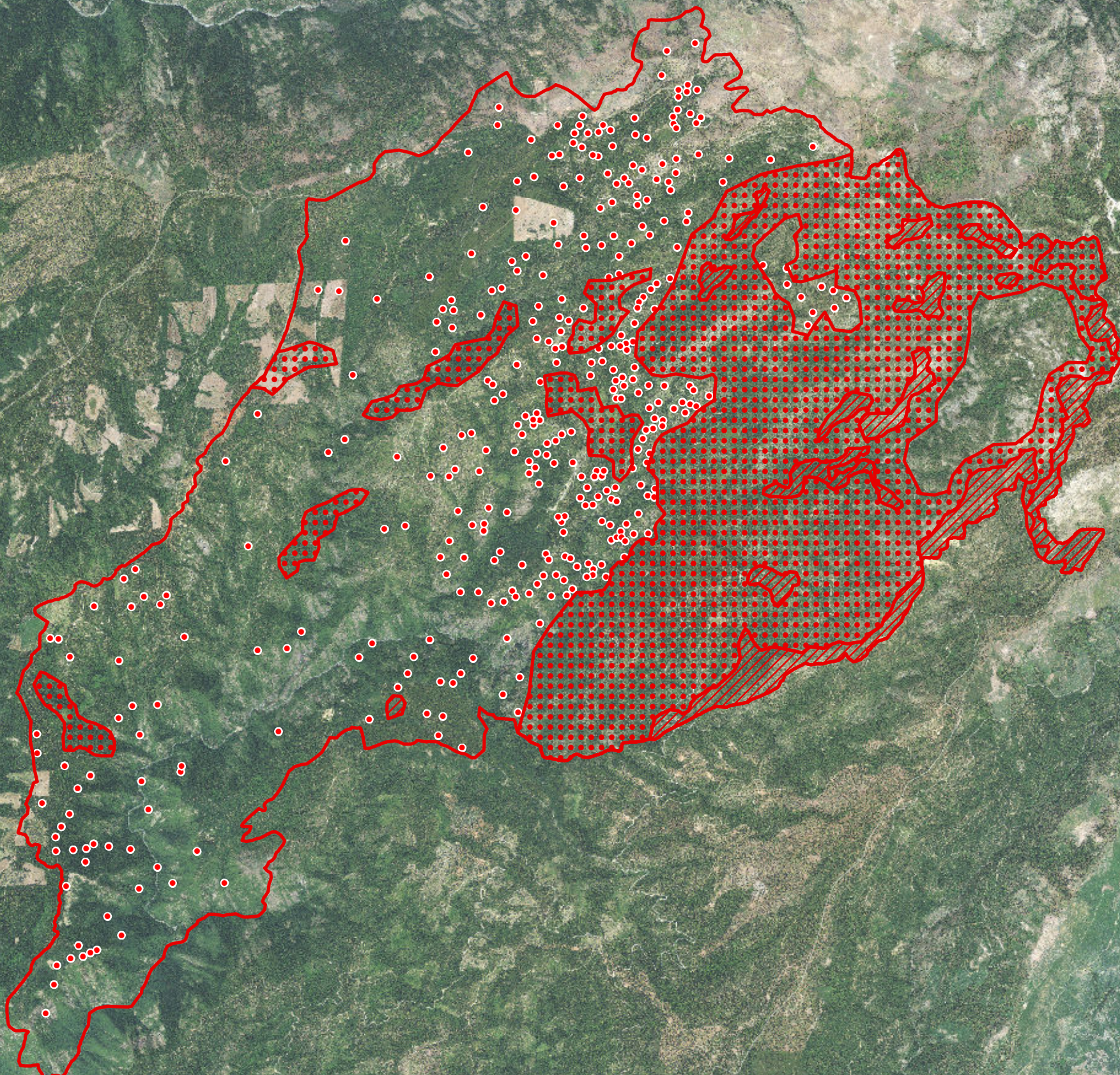
08/24/2013 2154 hrs PDT

Heat Acres: 24,269

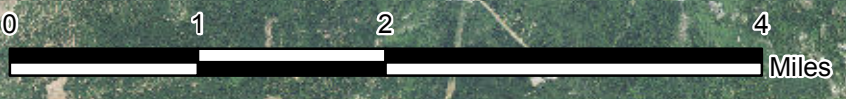






39°15'N 39°14'N 39°13'N 39°11'N 39°11'N 39°10'N 39°10'N 39°8'N 39°8'N 39°8'N 39°7'N 39°7'N 39°6'N 39°6'N 39°5'N 39°5'N 39°4'N 39°4'N 39°3'N 39°3'N 39°2'N 39°2'N 39°1'N

39°15'N 39°14'N 39°13'N 39°11'N 39°11'N 39°10'N 39°10'N 39°8'N 39°8'N 39°8'N 39°7'N 39°7'N 39°6'N 39°6'N 39°5'N 39°5'N 39°4'N 39°4'N 39°3'N 39°3'N 39°2'N 39°2'N 39°1'N



IRIN: Kurt Teuber
Map Produced: 08/25/2013 0115 hrs



-  Heat Perimeter
-  Intense Heat
-  Scattered Heat
-  Isolated Heat Sources

NAD 1983 UTM Zone 10N

USDA, ELM and FS personnel

120°40'W 120°38'W 120°38'W 120°37'W 120°36'W 120°35'W 120°34'W 120°33'W 120°32'W 120°31'W 120°30'W