

120°41'W 120°40'W 120°38'W 120°38'W 120°37'W 120°36'W 120°35'W 120°34'W 120°33'W 120°32'W 120°31'W 120°30'W

American Fire

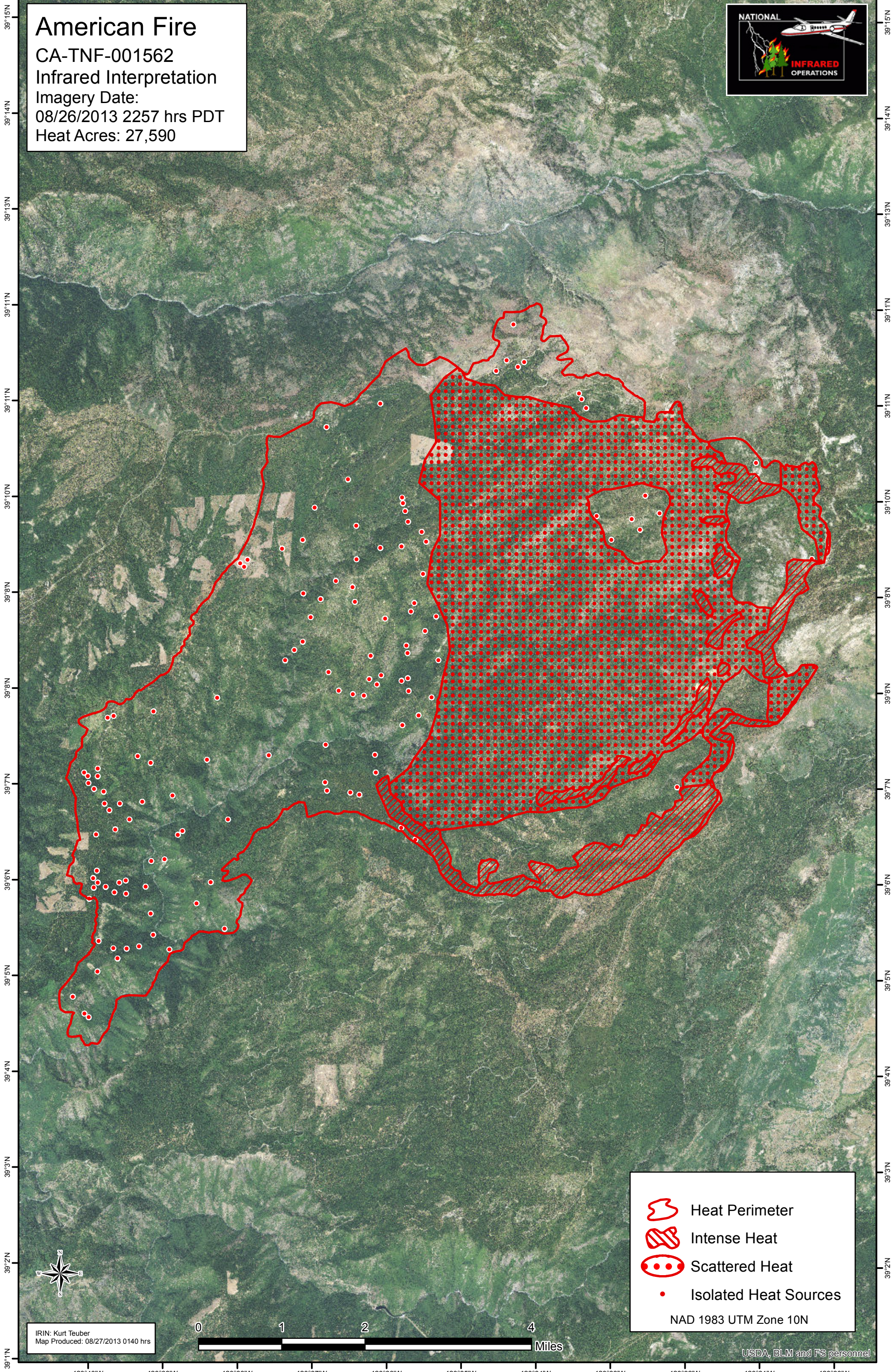
CA-TNF-001562

Infrared Interpretation

Imagery Date:

08/26/2013 2257 hrs PDT

Heat Acres: 27,590

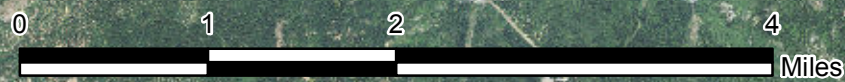






39°15'N
39°14'N
39°13'N
39°11'N
39°11'N
39°10'N
39°10'N
39°8'N
39°8'N
39°8'N
39°7'N
39°7'N
39°6'N
39°6'N
39°5'N
39°5'N
39°4'N
39°4'N
39°3'N
39°3'N
39°2'N
39°2'N
39°1'N

39°15'N
39°14'N
39°13'N
39°11'N
39°11'N
39°10'N
39°10'N
39°8'N
39°8'N
39°8'N
39°7'N
39°7'N
39°6'N
39°6'N
39°5'N
39°5'N
39°4'N
39°4'N
39°3'N
39°3'N
39°2'N
39°2'N
39°1'N



IRIN: Kurt Teuber
Map Produced: 08/27/2013 0140 hrs



-  Heat Perimeter
-  Intense Heat
-  Scattered Heat
-  Isolated Heat Sources

NAD 1983 UTM Zone 10N

USDA, ELM and FS personnel