

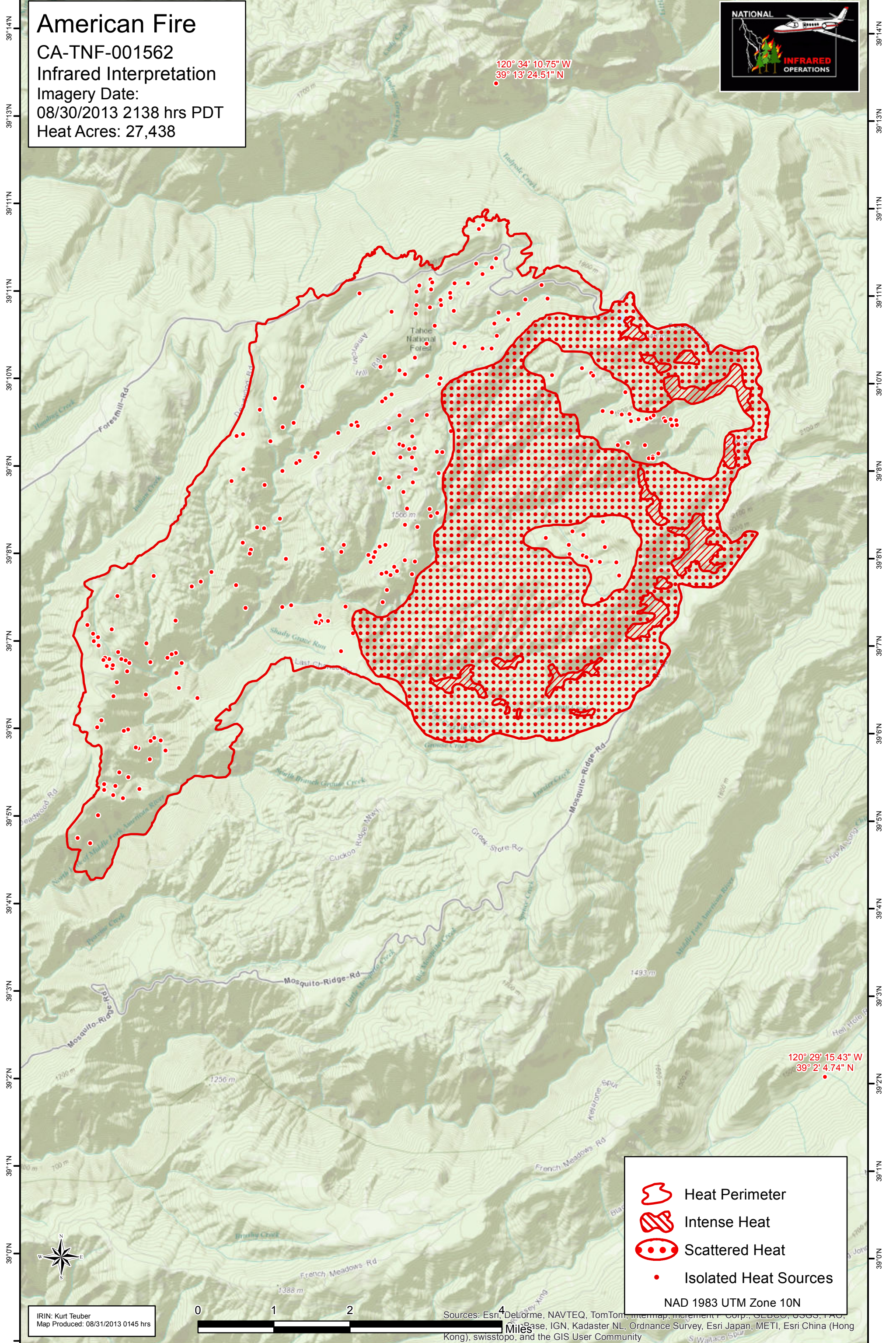
120°41'W 120°40'W 120°38'W 120°38'W 120°37'W 120°36'W 120°35'W 120°34'W 120°33'W 120°32'W 120°31'W 120°30'W 120°29'W

American Fire
CA-TNF-001562
Infrared Interpretation
Imagery Date:
08/30/2013 2138 hrs PDT
Heat Acres: 27,438



120° 34' 10.75" W
39° 13' 24.51" N

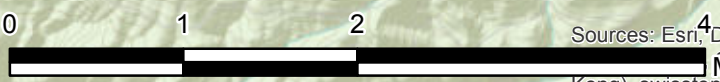
120° 29' 15.43" W
39° 2' 4.74" N



- Heat Perimeter
- Intense Heat
- Scattered Heat
- Isolated Heat Sources

NAD 1983 UTM Zone 10N

IRIN: Kurt Teuber
Map Produced: 08/31/2013 0145 hrs



Sources: Esri, DeLorme, NAVTEQ, TomTom, Intermap, increment P Corp., GEBCO, USGS, FAO, AeroGRID, IGN, Kadaster NL, Ordnance Survey, Esri Japan, METI, Esri China (Hong Kong), swisstopo, and the GIS User Community

120°41'W 120°40'W 120°38'W 120°38'W 120°37'W 120°36'W 120°35'W 120°34'W 120°33'W 120°32'W 120°31'W 120°30'W 120°29'W